



Theme 3
Population and social conditions
Series B
Short-term statistics

STAT 1131
ISSN 0252-9920



Unemployment

12 □ 1996 Monthly

9 December 1996

UNEMPLOYMENT IN THE EUROPEAN UNION

October 1996

Eurostat estimates that the seasonally-adjusted unemployment rate in the European Union for the month of October 1996 was 10.9%, representing the same level as in the six previous months and an increase of 0.1% by comparison with October 1995.

In recent months, the seasonally-adjusted unemployment rate has fallen in the United Kingdom, Ireland, Sweden, Finland and Denmark while rising in Germany, France and Spain.

The Spanish Labour Force Survey results for the third quarter of 1996 have been included in this month's data, causing a considerable upward revision of the Spanish figures by comparison with our earlier publications.

Employment growth in the European Union :
see supplement on page 15.



OFICINA ESTADÍSTICA DE LAS COMUNIDADES EUROPEAS
DE EUROPÆISKE FÆLLESSKABERS STATISTISKE KONTOR
STATISTISCHES AMT DER EUROPÄISCHEN GEMEINSCHAFTEN
ΣΤΑΤΙΣΤΙΚΗ ΥΠΗΡΕΣΙΑ ΤΩΝ ΕΥΡΩΠΑΪΚΩΝ ΚΟΙΝΟΤΗΤΩΝ
STATISTICAL OFFICE OF THE EUROPEAN COMMUNITIES
OFFICE STATISTIQUE DES COMMUNAUTÉS EUROPÉENNES
ISTITUTO STATISTICO DELLE COMUNITÀ EUROPEE
BUREAU VOOR DE STATISTIEK DER EUROPESE GEMEENSCHAPPEN
SERVIÇO DE ESTATÍSTICA DAS COMUNIDADES EUROPEIAS

L-2920 Luxembourg — Tél. 43 01-1 — Télex COMEUR LU 3423
B-1049 Bruxelles, rue de la Loi 200 — Tél. 299 11 11

The *unemployment data* presented in this bulletin are in line with the definitions and recommendations of the International Labour Office. The figures have been estimated by Eurostat on the basis of the European Labour Force Survey and can be used for international comparisons.

In the third month of each quarter, the bulletin contains a 4-page *supplement on short-term employment trends*.

Detailed information on methods and sources can be found at the end of the sections on unemployment and employment.

For further information : A. Persenaire tel. + 352 4301-32005
J. Recktenwald tel. + 352 4301-34103
R. Brandenbourger tel. + 352 4301-33272

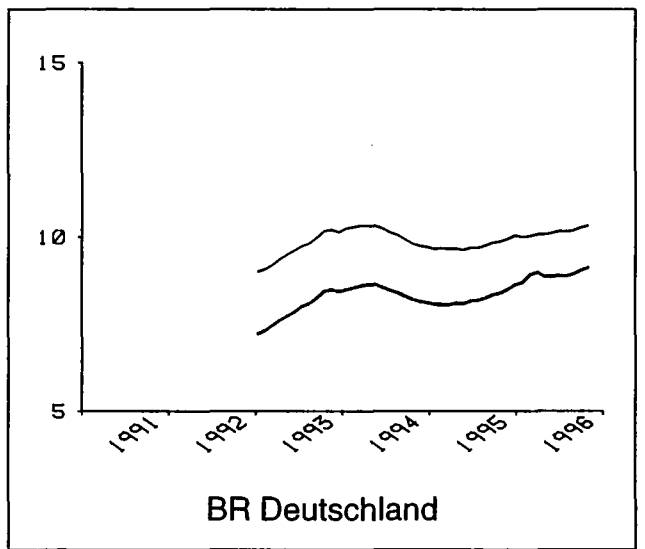
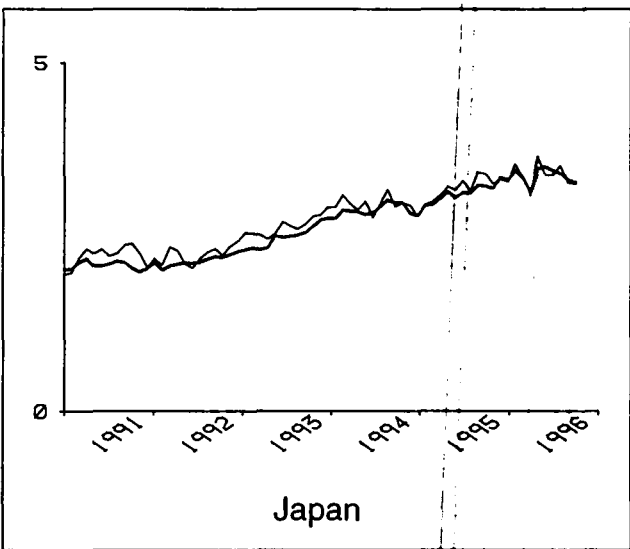
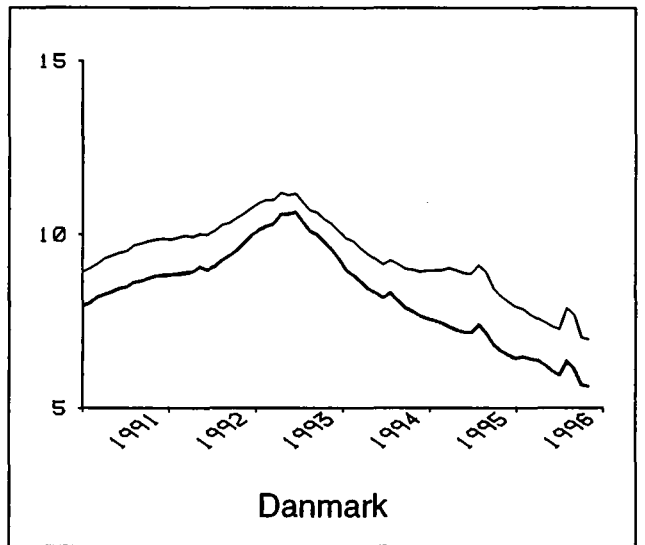
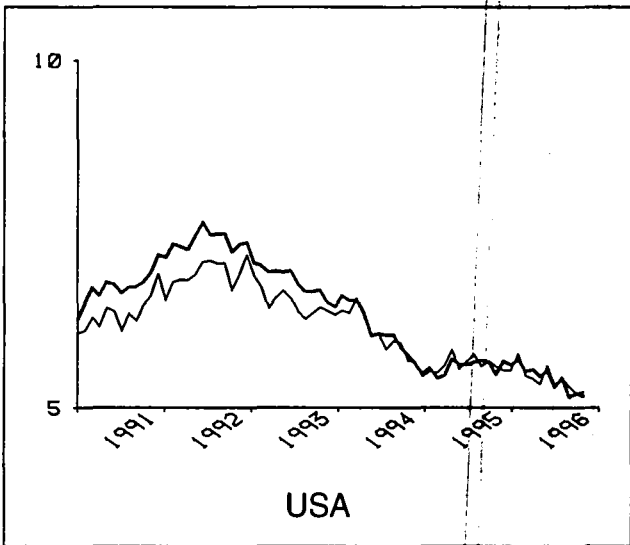
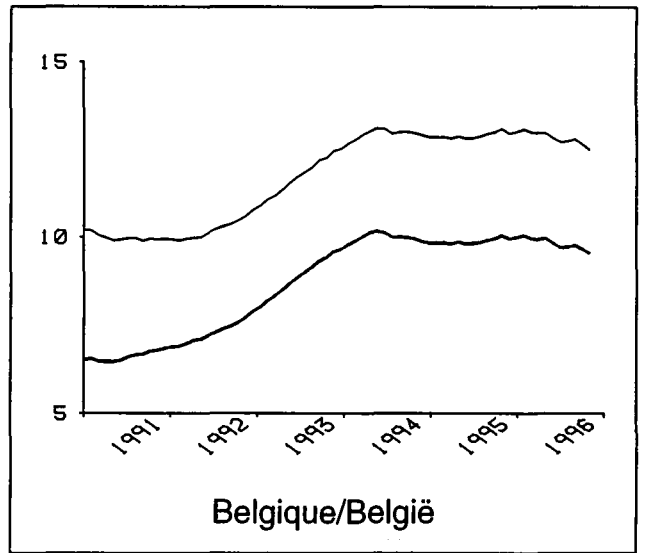
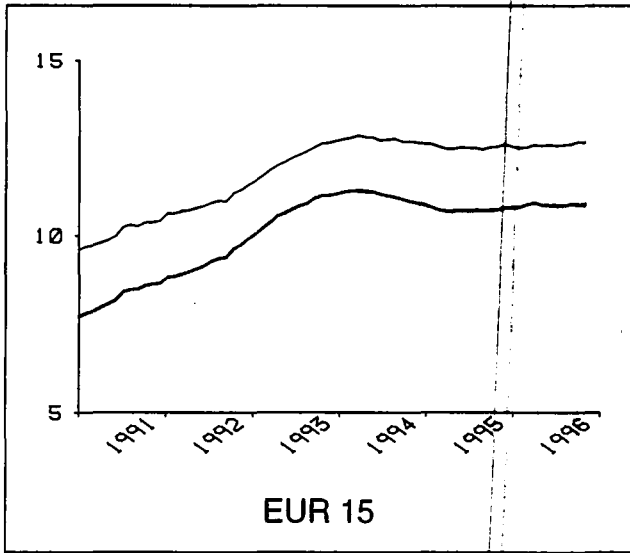
Table of contents :

Unemployment rates, seasonally-adjusted :	
- graphs.....	3-5
- tables	6-7
Unemployment rates, not seasonally-adjusted.....	8-9
Unemployment rates, annual averages.....	10-11
Number of unemployed, annual averages.....	12
Methodological notes (unemployment).....	13-14
Supplement " Short-term indicators "	15-18

Signs and abbreviations :

Eur-15	All Member States of the European Union
T	Total
F	Females
< 25	Persons aged under 25
:	Data not available

Unemployment rates, seasonally adjusted (%)

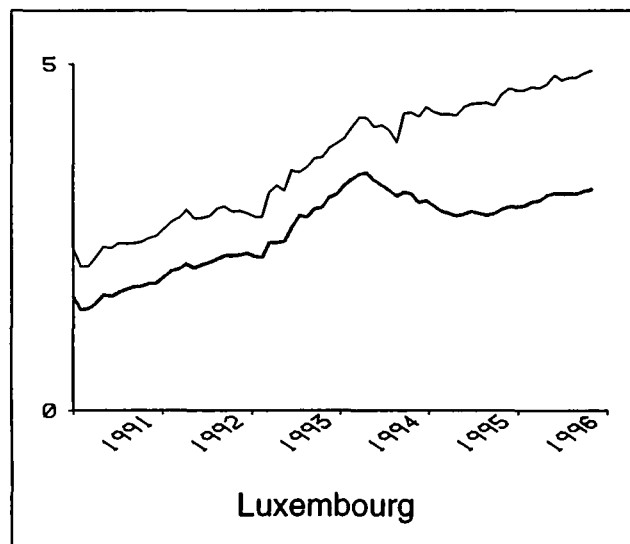
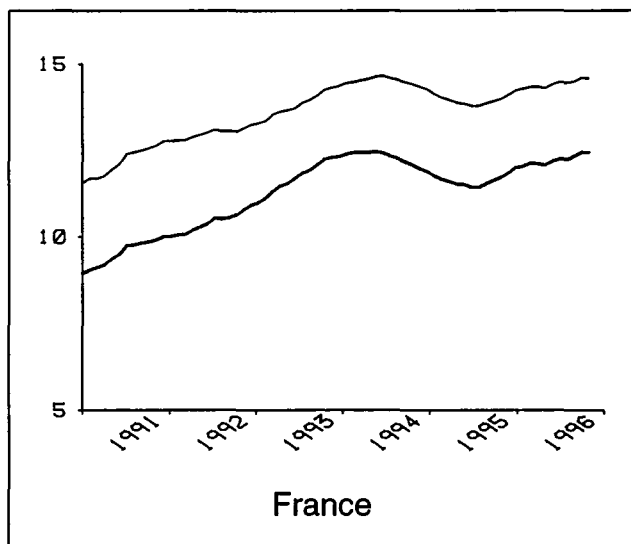
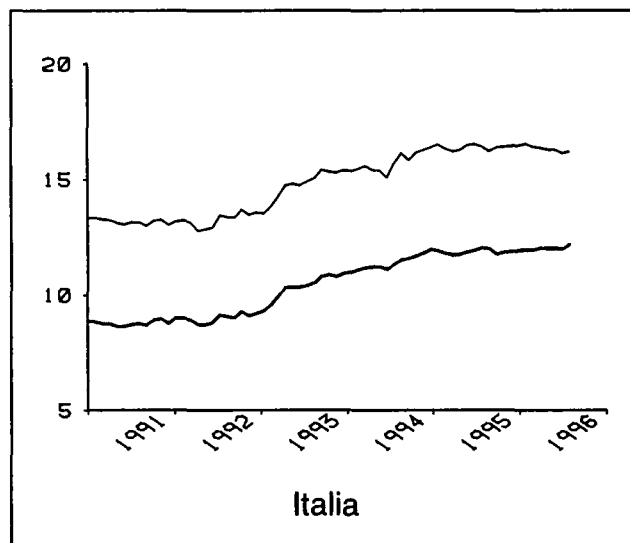
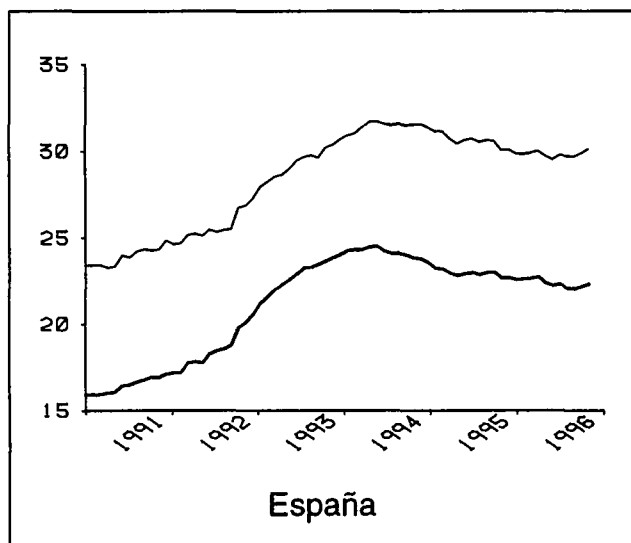
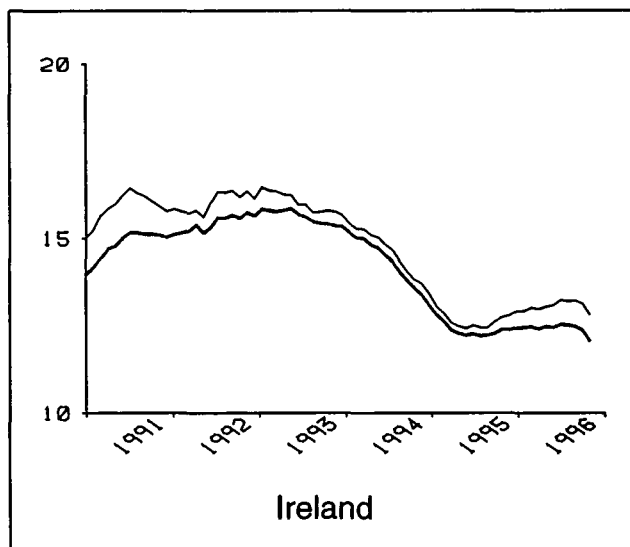
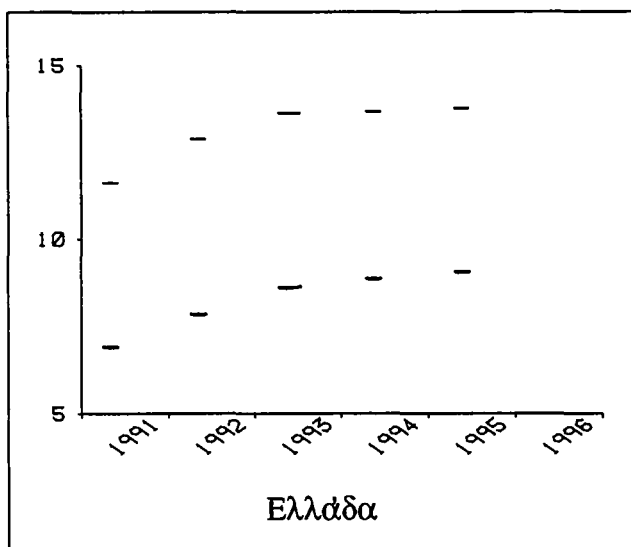


— Total

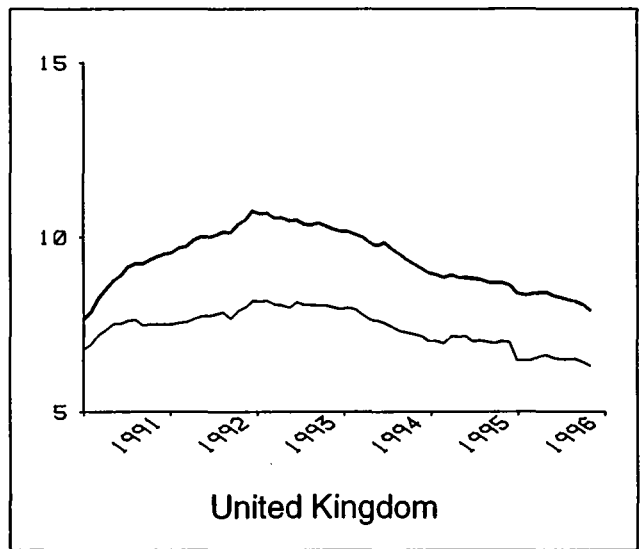
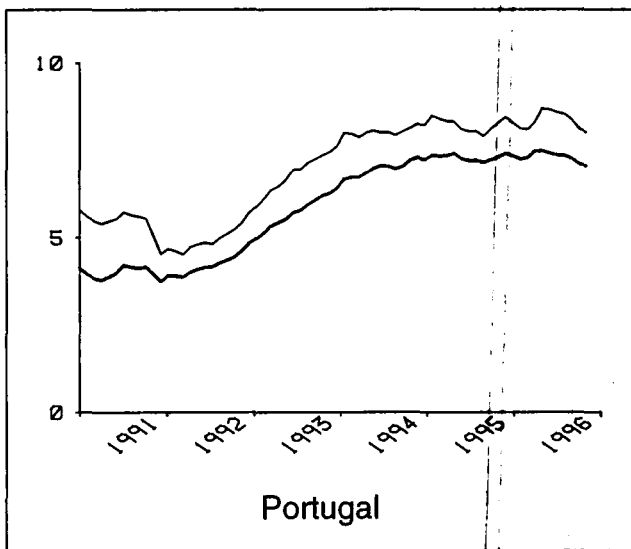
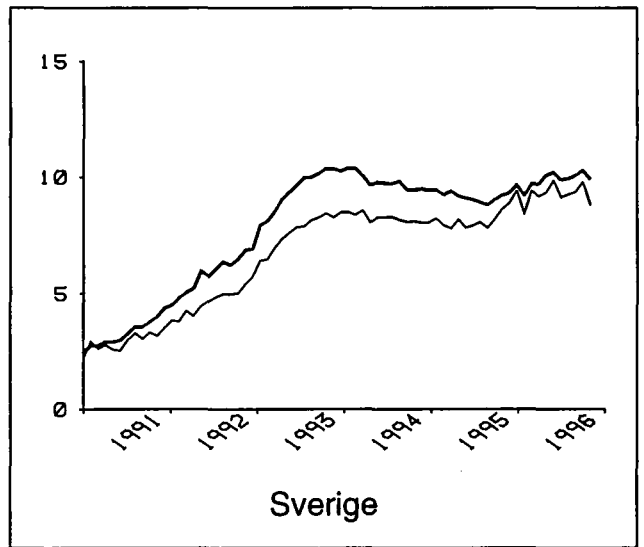
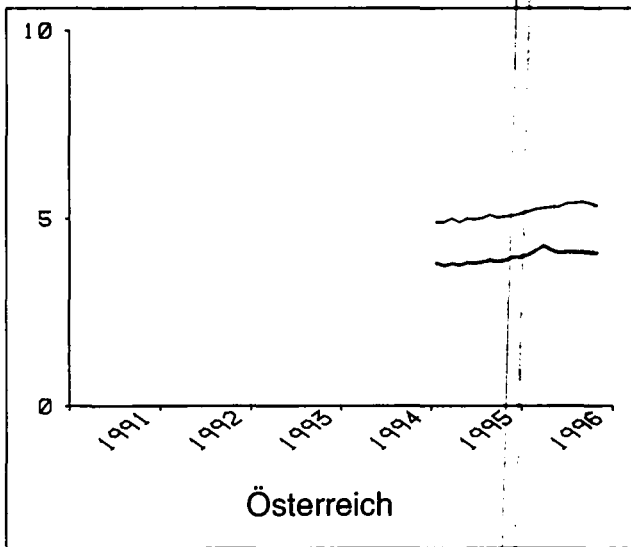
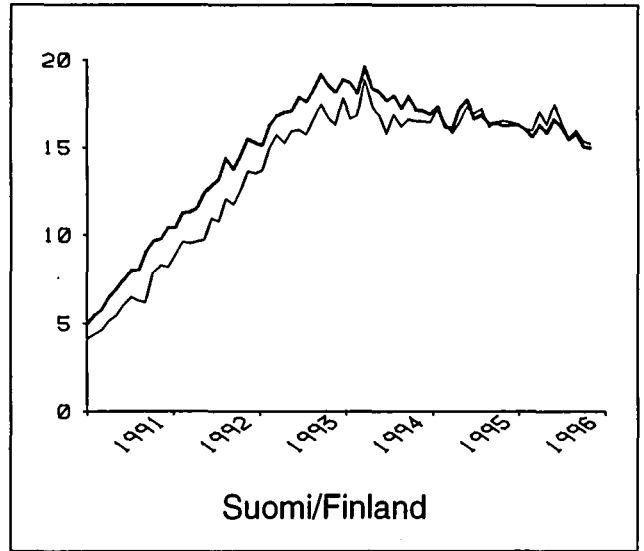
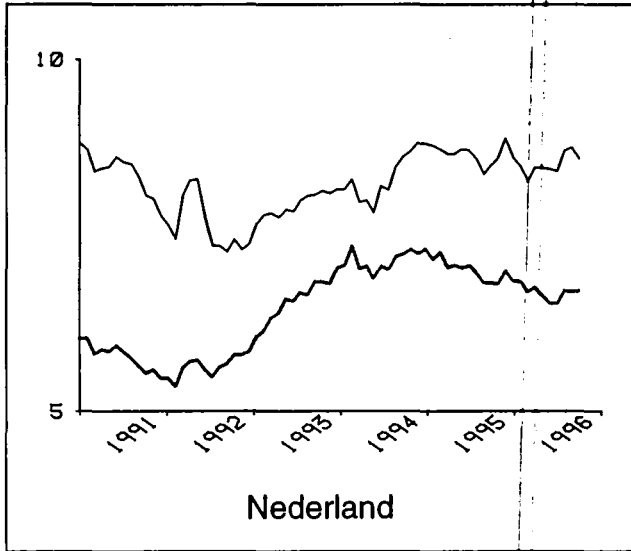
— Females



Unemployment rates, seasonally adjusted (%)



Unemployment rates, seasonally adjusted (%)



— Total

— Females

Unemployment rates, seasonally adjusted

(%)



	EUR 15	Belgique/ België	Danmark	Deutschland	Ελλάδα	España	France	Ireland	Italia	Luxembourg	Nederland	Österreich	Portugal	Suomi/ Finland	Sverige	United Kingdom	USA	Japan	
Total Males and females																			
1994.10	11.0	10.0	7.8	8.2	:	23.8	12.1	13.6	11.7	3.1	7.3	:	7.2	17.2	9.5	9.2	5.8	3.0	
1995.10	10.8	10.1	6.7	8.4	:	22.7	11.7	12.4	11.8	2.9	6.8	3.9	7.3	16.3	9.2	8.7	5.5	3.2	
1996.06	10.9	9.7	6.0	8.9	:	22.3	12.3	12.5	12.0	3.1	6.5	4.1	7.4	16.2	9.9	8.3	5.3	3.5	
1996.07	10.9	9.7	6.4	8.9	:	22.1	12.3	12.5	12.2	3.1	6.7	4.1	7.4	15.5	9.9	8.2	5.4	3.4	
1996.08	10.9	9.8	6.1	8.9	:	22.0	12.4	12.5	:	3.1	6.7	4.1	7.3	15.8	10.1	8.2	5.2	3.3	
1996.09	10.9	9.7	5.7	9.0	:	22.2	12.5	12.4	:	3.2	6.7	4.1	7.1	15.0	10.3	8.1	5.2	3.3	
1996.10	10.9	9.6	5.6	9.1	:	22.3	12.5	12.1	:	3.2	:	4.1	7.1	15.0	9.9	7.9	5.2	:	
Males																			
1994.10	9.8	7.9	6.7	7.0	:	19.2	10.2	13.4	9.1	2.4	6.3	:	6.5	17.8	10.7	10.8	5.8	3.0	
1995.10	9.4	7.9	5.4	7.3	:	18.0	9.8	12.2	9.1	2.0	5.5	3.0	6.5	16.0	9.8	10.0	5.4	3.2	
1996.06	9.6	7.6	4.9	7.9	:	17.6	10.4	12.1	9.5	2.2	5.2	3.1	6.4	15.9	10.6	9.7	5.3	3.5	
1996.07	9.6	7.6	5.1	7.9	:	17.3	10.4	12.1	9.8	2.2	5.3	3.1	6.4	15.4	10.6	9.5	5.4	3.3	
1996.08	9.6	7.6	4.8	8.0	:	17.3	10.6	12.0	:	2.2	5.2	3.1	6.4	15.6	10.7	9.5	5.0	3.4	
1996.09	9.6	7.6	4.5	8.1	:	17.3	10.7	11.9	:	2.2	5.4	3.1	6.3	14.8	10.7	9.4	5.2	3.3	
1996.10	9.6	7.5	4.5	8.2	:	17.4	10.7	11.6	:	2.2	:	3.1	6.3	14.7	11.0	9.1	5.1	:	
Females																			
1994.10	12.7	13.0	9.0	9.8	:	31.5	14.4	13.8	16.2	4.3	8.7	:	8.1	16.5	8.1	7.2	5.7	3.0	
1995.10	12.5	13.1	8.2	9.9	:	30.0	14.0	12.7	16.4	4.6	8.6	5.0	8.3	16.5	8.6	7.0	5.6	3.3	
1996.06	12.6	12.7	7.3	10.2	:	29.8	14.5	13.2	16.1	4.8	8.4	5.4	8.6	16.4	9.1	6.5	5.3	3.4	
1996.07	12.6	12.7	7.9	10.2	:	29.7	14.5	13.2	16.2	4.8	8.7	5.4	8.5	15.5	9.3	6.5	5.4	3.5	
1996.08	12.6	12.8	7.7	10.2	:	29.7	14.5	13.2	:	4.8	8.7	5.4	8.4	16.0	9.4	6.5	5.3	3.3	
1996.09	12.7	12.7	7.0	10.3	:	29.9	14.6	13.1	:	4.9	8.6	5.4	8.1	15.4	9.8	6.4	5.2	3.3	
1996.10	12.7	12.5	7.0	10.3	:	30.1	14.6	12.8	:	4.9	:	5.3	8.0	15.2	8.8	6.3	5.2	:	
Under 25 years Males and females																			
1994.10	22.0	24.0	10.8	8.5	:	44.5	28.6	21.9	32.8	7.2	12.0	:	16.1	39.4	21.7	16.7	11.8	6.0	
1995.10	21.5	24.8	9.5	9.0	:	42.2	27.4	19.2	33.0	7.3	11.3	5.7	16.8	36.7	19.2	16.1	12.2	6.0	
1996.06	21.6	25.0	8.3	9.5	:	42.7	28.6	19.3	33.2	8.0	9.8	6.1	17.4	36.1	21.4	15.4	11.8	6.8	
1996.07	21.5	24.8	8.3	9.6	:	41.7	28.5	19.1	33.6	7.9	10.1	6.1	17.5	32.6	21.1	15.3	12.2	6.6	
1996.08	21.6	25.0	7.8	9.7	:	41.5	28.7	18.8	:	7.7	10.3	6.1	17.0	34.5	22.2	15.1	11.7	6.0	
1996.09	21.6	24.9	7.2	9.7	:	41.8	29.1	18.5	:	7.8	10.4	6.0	16.5	33.2	21.2	15.1	11.4	6.5	
1996.10	21.6	24.4	7.1	9.8	:	42.8	29.1	17.8	:	7.8	:	5.9	16.2	31.2	20.2	14.6	11.6	:	

Unemployment rates, seasonally adjusted

(%)



	EUR 15	Belgique/ België	Danmark	Deutschland	Ελλάδα	España	France	Ireland	Italia	Luxembourg	Nederland	Österreich	Portugal	Suomi/ Finland	Sverige	United Kingdom	USA	Japan
Under 25 years																		
Males																		
1994.10	21.0	22.2	9.9	8.5	:	39.4	25.1	23.5	29.3	7.3	11.8	:	15.0	41.3	23.2	19.3	12.3	6.5
1995.10	20.0	22.7	7.5	9.2	:	36.4	24.0	20.5	28.5	6.6	11.1	4.5	14.5	35.8	18.9	18.0	12.8	6.6
1996.06	20.4	23.1	6.8	10.1	:	37.1	25.4	20.2	29.1	7.6	8.4	4.7	14.6	35.8	21.8	18.1	12.4	7.0
1996.07	20.2	22.8	6.6	10.1	:	35.6	25.4	20.2	29.4	7.5	8.6	4.6	14.7	33.6	20.6	17.9	13.3	6.8
1996.08	20.3	23.0	6.2	10.3	:	35.4	25.8	19.8	:	7.5	8.6	4.6	14.3	33.3	23.1	17.7	11.9	6.3
1996.09	20.3	22.8	5.7	10.4	:	35.6	26.2	19.4	:	7.6	9.5	4.6	13.7	33.5	22.4	17.6	11.9	6.7
1996.10	20.3	22.3	5.6	10.5	:	36.2	26.2	18.7	:	7.5	:	4.6	13.5	27.7	23.2	17.1	12.4	:
Females																		
1994.10	23.2	26.2	12.0	8.5	:	50.5	32.2	20.0	37.2	7.2	12.2	:	17.4	37.5	20.1	13.5	11.3	5.4
1995.10	23.2	27.2	11.8	8.7	:	49.0	31.0	17.6	38.7	8.0	11.5	6.9	19.6	37.8	19.7	13.7	11.6	5.3
1996.06	23.0	27.3	10.1	8.9	:	49.3	31.9	18.1	38.4	8.3	11.2	7.5	20.8	36.3	21.0	12.3	11.1	6.6
1996.07	23.0	27.2	10.1	8.9	:	49.0	31.7	17.9	38.9	8.3	11.7	7.6	21.3	31.4	21.6	12.2	11.1	6.4
1996.08	23.1	27.4	9.6	9.0	:	48.8	31.7	17.6	:	7.9	12.0	7.6	20.7	35.8	21.2	12.1	11.4	5.8
1996.09	23.1	27.3	8.9	9.0	:	49.3	32.2	17.3	:	8.0	11.4	7.5	20.1	33.0	20.0	11.9	10.8	6.3
1996.10	23.1	26.9	8.8	8.9	:	50.6	32.2	16.7	:	8.2	:	7.3	19.8	35.4	16.7	11.5	10.8	:
25 years and over																		
Males																		
1994.10	8.1	6.2	6.1	6.8	:	15.5	8.5	11.3	6.1	1.9	5.3	:	5.0	14.6	9.0	9.1	4.6	2.5
1995.10	7.9	6.3	4.9	7.0	:	14.8	8.3	10.5	6.3	1.5	4.6	2.7	5.1	13.2	8.6	8.5	4.0	2.7
1996.06	8.0	5.9	4.5	7.7	:	14.2	8.8	10.5	6.8	1.6	4.7	2.8	4.9	13.0	9.2	8.1	4.0	3.1
1996.07	8.1	5.9	4.8	7.7	:	14.0	8.8	10.5	7.0	1.6	4.7	2.8	4.9	12.8	9.3	8.0	4.0	2.9
1996.08	8.1	5.9	4.6	7.7	:	14.0	8.9	10.5	:	1.6	4.7	2.8	5.0	13.3	9.1	7.9	3.8	3.0
1996.09	8.0	5.9	4.3	7.9	:	14.1	9.0	10.4	:	1.6	4.7	2.8	5.0	12.5	9.3	7.8	4.0	2.9
1996.10	8.0	5.8	4.3	7.9	:	14.0	9.0	10.2	:	1.6	:	2.8	5.0	12.9	9.4	7.6	3.8	:
Females																		
1994.10	10.7	11.1	8.3	10.0	:	26.5	12.0	11.9	11.8	3.7	7.7	:	6.4	13.4	6.4	5.9	4.5	2.5
1995.10	10.7	11.2	7.4	10.0	:	25.2	11.8	11.3	12.1	3.9	7.9	4.6	6.4	13.7	7.1	5.6	4.4	2.9
1996.06	10.7	10.7	6.6	10.4	:	24.9	12.3	11.8	11.8	4.1	7.7	4.9	6.6	13.7	7.6	5.3	4.2	2.8
1996.07	10.8	10.7	7.4	10.4	:	24.9	12.3	11.8	11.8	4.1	7.9	4.9	6.5	13.5	7.7	5.3	4.3	3.0
1996.08	10.8	10.8	7.3	10.4	:	24.9	12.4	11.9	:	4.2	7.9	4.9	6.5	13.3	7.8	5.4	4.1	2.8
1996.09	10.9	10.6	6.6	10.5	:	25.0	12.4	11.9	:	4.3	7.9	4.9	6.3	13.1	8.5	5.3	4.1	2.7
1996.10	10.8	10.5	6.6	10.5	:	24.9	12.4	11.7	:	4.3	:	4.9	6.2	12.7	7.8	5.2	4.1	:

8 Unemployment rates, not seasonally adjusted

(%)



	EUR 15	Belgique/ België	Danmark	Deutschland	Ελλάδα	España	France	Ireland	Italia	Luxembourg	Nederland	Österreich	Portugal	Suomi/ Finland	Sverige	United Kingdom	USA	Japan
Total Males and females																		
1994.10	11.0	10.2	7.5	7.9	:	23.9	12.4	13.3	11.9	3.2	7.3	:	7.3	16.9	9.2	9.1	5.4	3.0
1995.10	10.7	10.3	6.5	8.0	:	22.7	12.0	12.2	12.0	3.0	6.9	3.8	7.4	15.8	9.1	8.5	5.2	3.2
1996.06	10.6	9.1	5.6	8.6	:	22.5	11.6	12.5	11.6	2.8	6.2	3.4	7.2	16.6	10.2	8.2	5.5	3.3
1996.07	10.7	9.9	6.0	8.8	:	21.7	11.7	12.7	11.8	2.8	6.6	3.4	7.1	15.4	10.0	8.4	5.6	3.2
1996.08	10.8	10.3	6.2	8.8	:	21.5	12.2	12.7	:	2.8	6.7	3.5	7.1	15.2	10.4	8.5	5.1	3.3
1996.09	10.8	10.1	5.5	8.7	:	21.9	12.6	12.3	:	3.2	6.6	3.6	7.0	14.4	10.0	8.2	5.0	3.3
1996.10	10.8	9.8	5.4	8.7	:	22.2	12.8	11.9	:	3.3	:	4.0	7.1	14.5	9.7	7.7	4.9	:
Males																		
1994.10	9.6	8.1	6.3	6.5	:	19.1	10.4	13.2	9.2	2.5	6.2	:	6.4	17.5	10.2	10.5	5.3	3.0
1995.10	9.3	8.1	5.0	6.8	:	18.0	10.0	12.0	9.2	2.0	5.5	2.5	6.4	15.6	9.6	9.8	4.9	3.2
1996.06	9.3	7.0	4.5	7.6	:	17.7	9.7	12.0	9.1	1.9	5.0	2.4	6.3	15.4	10.7	9.7	5.3	3.4
1996.07	9.4	7.7	4.6	7.7	:	16.9	9.8	12.1	9.5	1.9	5.1	2.3	6.3	14.4	10.3	9.7	5.4	3.2
1996.08	9.5	8.0	4.7	7.7	:	16.8	10.2	12.0	:	2.0	5.2	2.3	6.2	14.5	10.8	9.7	4.6	3.4
1996.09	9.4	7.9	4.2	7.6	:	17.0	10.7	11.8	:	2.2	5.2	2.3	6.2	13.7	10.0	9.3	4.7	3.3
1996.10	9.4	7.7	4.2	7.6	:	17.2	10.9	11.4	:	2.3	:	2.6	6.2	14.4	10.7	8.9	4.6	:
Females																		
1994.10	12.8	13.3	9.0	9.7	:	31.8	14.9	13.6	16.5	4.4	8.9	:	8.4	16.3	8.2	7.2	5.6	2.9
1995.10	12.7	13.4	8.2	9.7	:	30.3	14.4	12.6	16.7	4.7	8.8	5.4	8.6	16.0	8.5	7.0	5.5	3.2
1996.06	12.4	12.0	7.0	9.9	:	30.1	13.8	13.3	15.8	4.4	8.0	4.8	8.3	17.9	9.7	6.2	5.7	3.2
1996.07	12.5	13.1	7.7	10.3	:	29.4	14.1	13.6	15.5	4.4	8.6	4.9	8.1	16.6	9.6	6.7	5.9	3.3
1996.08	12.6	13.5	8.0	10.3	:	28.9	14.5	13.7	:	4.4	8.8	5.1	8.1	15.8	9.9	7.0	5.7	3.2
1996.09	12.8	13.2	7.1	10.1	:	29.7	15.0	13.1	:	4.9	8.7	5.1	8.1	15.1	10.0	6.9	5.3	3.3
1996.10	12.7	12.8	7.0	10.2	:	30.2	15.0	12.6	:	5.1	:	5.7	8.3	14.6	8.7	6.3	5.2	:
Under 25 years Males and females																		
1994.10	22.5	26.0	10.7	8.0	:	44.6	31.8	21.6	33.8	7.8	12.1	:	16.7	42.1	22.3	16.3	11.3	5.6
1995.10	21.9	26.7	9.4	8.4	:	42.3	30.5	18.9	33.9	7.9	11.4	5.9	17.4	38.6	19.5	15.7	11.7	5.6
1996.06	21.3	21.2	7.4	9.0	:	43.5	25.3	19.2	33.0	6.6	9.2	4.8	16.8	34.6	21.4	16.1	13.0	6.6
1996.07	21.3	26.0	7.7	9.9	:	40.9	26.3	19.4	32.8	6.7	10.3	4.9	16.4	28.3	17.2	16.8	12.6	6.5
1996.08	21.8	27.7	8.0	10.1	:	40.4	28.2	19.3	:	6.7	10.7	5.3	16.2	31.6	22.0	17.1	10.7	6.0
1996.09	22.0	27.5	7.2	9.6	:	41.7	31.4	18.6	:	8.2	10.6	5.6	16.1	33.4	20.8	15.3	11.2	6.6
1996.10	21.9	26.4	7.0	9.1	:	42.4	32.3	17.5	:	8.6	:	6.2	16.4	32.5	21.3	14.0	11.0	:

Unemployment rates, not seasonally adjusted

(%)



	EUR 15	Belgique/ België	Danmark	Deutschland	Ελλάδα	España	France	Ireland	Italia	Luxembourg	Nederland	Österreich	Portugal	Suomi/ Finland	Sverige	United Kingdom	USA	Japan
Under 25 years																		
Males																		
1994.10	21.1	24.0	9.3	7.6	:	39.4	27.9	23.1	30.2	7.7	11.4	:	15.4	42.3	22.5	18.8	11.4	6.0
1995.10	20.1	24.5	7.1	8.2	:	36.3	26.6	20.1	29.3	6.9	10.7	3.8	14.9	36.2	18.3	17.5	11.9	6.1
1996.06	20.1	19.2	6.0	9.5	:	37.8	21.9	20.0	29.2	6.1	7.8	3.4	14.4	33.2	21.8	19.1	13.1	7.0
1996.07	19.7	23.7	6.1	10.2	:	34.5	22.7	20.2	28.6	6.2	8.7	3.2	13.8	25.9	16.4	19.2	13.0	6.6
1996.08	20.3	25.3	6.3	10.4	:	34.2	24.7	20.0	:	6.3	8.3	3.4	13.5	29.5	22.9	19.3	10.5	6.4
1996.09	20.4	25.2	5.5	9.9	:	35.3	27.8	19.4	:	7.8	9.3	3.6	13.3	33.3	20.1	17.7	11.1	6.8
1996.10	20.3	24.2	5.3	9.4	:	35.6	28.9	18.4	:	8.1	:	3.9	13.4	28.4	24.0	16.4	11.3	:
Females																		
1994.10	24.1	28.2	12.2	8.5	:	50.9	35.7	19.8	38.2	8.0	12.7	:	18.3	41.9	22.2	13.3	11.2	5.1
1995.10	24.0	29.1	11.9	8.7	:	49.3	34.6	17.5	39.7	8.9	12.0	8.2	20.5	41.7	20.9	13.5	11.5	5.0
1996.06	22.6	23.5	9.1	8.5	:	50.3	28.9	18.2	37.9	7.0	10.6	6.3	19.8	36.1	20.8	12.5	12.9	6.2
1996.07	23.1	28.8	9.5	9.6	:	48.6	30.1	18.4	38.0	7.3	12.0	6.7	19.9	30.8	18.1	14.0	12.1	6.3
1996.08	23.5	30.5	10.0	9.7	:	47.9	31.8	18.3	:	7.1	13.1	7.3	19.8	33.9	21.1	14.3	10.9	5.6
1996.09	23.9	30.2	9.2	9.4	:	49.3	35.2	17.6	:	8.6	12.0	7.7	19.9	33.4	21.5	12.6	11.3	6.4
1996.10	23.8	28.9	8.9	8.8	:	50.4	35.8	16.5	:	9.2	:	8.6	20.4	38.0	18.5	11.2	10.7	:
25 years and over																		
Males																		
1994.10	7.9	6.2	5.6	6.4	:	15.4	8.3	11.2	6.2	1.9	5.3	:	4.8	14.4	8.6	8.9	4.1	2.6
1995.10	7.7	6.2	4.5	6.6	:	14.8	8.1	10.3	6.4	1.5	4.5	2.3	4.9	12.9	8.5	8.3	3.6	2.8
1996.06	7.8	5.7	4.2	7.3	:	14.1	8.4	10.4	6.3	1.5	4.5	2.2	4.9	11.7	9.0	8.0	3.7	2.9
1996.07	7.8	5.9	4.3	7.4	:	13.7	8.4	10.5	6.8	1.5	4.5	2.1	4.9	12.2	9.2	7.9	3.8	2.8
1996.08	7.9	6.0	4.4	7.4	:	13.7	8.6	10.4	:	1.5	4.7	2.1	4.9	12.5	9.1	7.8	3.5	3.0
1996.09	7.8	5.9	4.0	7.3	:	13.7	8.8	10.3	:	1.6	4.5	2.1	4.9	11.6	8.8	7.7	3.6	2.8
1996.10	7.8	5.8	4.0	7.4	:	13.9	8.8	10.0	:	1.6	:	2.4	4.9	12.5	9.1	7.4	3.4	:
Females																		
1994.10	10.7	11.1	8.3	9.8	:	26.7	11.9	11.7	11.9	3.7	7.9	:	6.6	12.9	6.2	5.9	4.5	2.5
1995.10	10.6	11.2	7.4	9.9	:	25.4	11.7	11.1	12.2	3.9	8.0	4.8	6.6	13.1	6.9	5.7	4.4	2.9
1996.06	10.5	10.5	6.5	10.1	:	25.0	12.0	11.8	11.6	3.9	7.3	4.5	6.4	14.0	7.9	5.0	4.2	2.6
1996.07	10.6	10.9	7.3	10.4	:	24.6	12.1	12.2	11.2	3.8	7.7	4.5	6.3	13.9	8.3	5.2	4.6	2.7
1996.08	10.7	11.0	7.5	10.4	:	24.2	12.4	12.3	:	3.9	7.7	4.6	6.3	13.4	8.4	5.4	4.6	2.8
1996.09	10.8	10.8	6.6	10.3	:	24.6	12.4	11.8	:	4.2	7.8	4.6	6.2	12.8	8.6	5.7	4.1	2.8
1996.10	10.8	10.5	6.5	10.4	:	24.9	12.3	11.5	:	4.3	:	5.1	6.4	12.2	7.5	5.3	4.1	:

Unemployment rates, annual averages

(%)



	EUR 15	Belgique/ België	Danmark	Deutschland	Ελλάδα	España	France	Ireland	Italia	Luxembourg	Nederland	Österreich	Portugal	Suomi/ Finland	Sverige	United Kingdom	USA	Japan	
Total																			
Males and females																			
1989	:	7.5	7.4	:	6.7	17.2	9.3	14.7	10.0	1.8	6.9	:	4.9	3.5	1.6	7.3	5.3	2.3	
1990	:	6.7	7.7	:	6.4	16.2	8.9	13.4	9.1	1.7	6.2	:	4.6	3.5	1.8	7.0	5.5	2.1	
1991	8.2	6.6	8.4	5.6	7.0	16.4	9.5	14.8	8.8	1.7	5.8	:	4.0	7.6	3.3	8.8	6.7	2.1	
1992	9.3	7.3	9.2	6.6	7.9	18.5	10.4	15.4	9.0	2.1	5.6	:	4.2	13.0	5.8	10.1	7.4	2.2	
1993	10.7	8.9	10.1	7.9	8.6	22.8	11.7	15.6	10.3	2.7	6.6	:	5.7	17.5	9.5	10.4	6.8	2.5	
1994	11.1	10.0	8.2	8.4	8.9	24.1	12.3	14.3	11.4	3.2	7.1	:	7.0	17.9	9.8	9.6	6.1	2.9	
1995	10.7	9.9	7.1	8.2	9.1	22.9	11.6	12.4	11.9	2.9	7.0	3.8	7.3	16.6	9.2	8.8	5.6	3.1	
Males																			
1989	:	4.7	6.7	:	4.1	12.9	7.0	14.2	7.1	1.3	4.9	:	3.5	3.5	1.6	7.4	5.2	2.2	
1990	:	4.1	7.0	:	3.9	11.9	6.7	12.8	6.4	1.2	4.3	:	3.2	3.9	1.8	7.4	5.6	2.0	
1991	6.9	4.3	7.5	4.6	4.4	12.3	7.4	14.2	6.2	1.3	4.1	:	2.8	9.0	3.6	9.9	7.0	2.0	
1992	8.1	5.3	8.3	5.2	5.0	14.5	8.3	15.1	6.5	1.7	4.3	:	3.6	14.8	6.9	11.9	7.8	2.1	
1993	9.7	6.9	9.6	6.6	5.7	19.1	10.0	15.4	7.8	2.2	5.6	:	4.8	19.0	11.1	12.3	7.1	2.4	
1994	10.0	7.9	7.3	7.2	6.0	19.7	10.4	14.1	8.9	2.7	6.3	:	6.1	18.9	11.2	11.3	6.2	2.8	
1995	9.4	7.8	5.7	7.1	6.2	18.2	9.7	12.2	9.2	2.0	5.8	2.9	6.5	16.7	10.1	10.1	5.6	3.1	
Females																			
1989	:	11.9	8.2	:	11.1	25.3	12.3	15.5	15.1	2.7	10.2	:	6.9	3.6	1.7	7.1	5.4	2.3	
1990	:	10.6	8.4	:	10.8	24.1	11.8	14.6	13.8	2.5	9.1	:	6.2	3.0	1.8	6.6	5.4	2.2	
1991	10.0	10.0	9.5	7.0	11.8	23.9	12.2	15.9	13.2	2.3	8.4	:	5.4	6.1	2.9	7.4	6.3	2.2	
1992	10.9	10.2	10.2	8.5	13.0	25.6	13.0	16.0	13.2	2.8	7.6	:	5.0	11.0	4.7	7.8	6.9	2.2	
1993	12.2	11.8	10.8	9.6	13.6	29.3	13.8	16.0	14.8	3.4	7.9	:	6.8	16.0	7.7	8.1	6.5	2.6	
1994	12.7	12.9	9.3	10.1	13.7	31.4	14.5	14.6	15.7	4.1	8.3	:	8.0	16.7	8.2	7.5	6.0	3.0	
1995	12.5	12.9	8.7	9.8	13.8	30.5	14.0	12.6	16.4	4.4	8.6	5.0	8.2	16.6	8.2	7.0	5.6	3.2	
Under 25 years																			
Males and females																			
1989	:	16.2	11.2	:	22.5	34.2	20.0	20.3	29.3	4.2	9.8	:	11.1	9.1	3.9	10.4	10.9	4.5	
1990	:	15.3	11.4	:	21.5	32.3	19.3	19.4	27.4	3.8	8.6	:	10.0	9.4	4.5	10.8	11.1	4.3	
1991	16.3	14.9	11.6	5.9	22.9	31.1	21.5	22.4	26.0	3.2	8.3	:	8.8	19.5	7.8	14.3	13.4	4.4	
1992	18.1	16.2	12.7	6.4	25.1	34.6	23.3	24.4	27.1	4.0	8.5	:	10.1	32.6	13.6	16.7	14.2	4.5	
1993	21.4	21.8	13.8	7.9	26.8	43.4	27.3	25.2	30.4	5.4	11.1	:	12.9	41.8	22.6	17.9	13.3	5.1	
1994	22.1	24.2	11.0	8.7	27.7	45.0	29.0	22.8	32.3	7.3	11.4	:	15.1	42.2	22.6	17.0	12.5	5.5	
1995	21.5	24.4	10.1	8.8	27.9	42.5	27.3	19.5	33.2	7.1	11.6	5.6	16.6	38.2	19.4	15.9	12.1	6.1	

Unemployment rates, annual averages

(%)



	EUR 15	Belgique/ België	Danmark	Deutschland	Ελλάδα	España	France	Ireland	Italia	Luxembourg	Nederland	Österreich	Portugal	Suomi/ Finland	Sverige	United Kingdom	USA	Japan
Under 25 years																		
Males																		
1989	:	11.8	10.7	:	15.4	27.6	16.3	21.8	24.7	3.5	8.2	:	9.0	8.3	3.9	11.2	11.4	4.8
1990	:	11.0	11.3	:	14.4	26.2	15.8	20.4	23.3	3.2	7.5	:	8.4	10.2	4.6	11.9	11.6	4.5
1991	15.1	11.9	11.1	5.4	16.0	25.7	18.1	23.7	22.6	3.3	7.4	:	6.8	21.6	8.5	16.6	14.3	4.7
1992	17.3	14.3	12.2	5.8	17.4	29.9	20.1	25.8	23.4	4.2	8.5	:	9.1	34.6	15.9	19.7	15.3	4.7
1993	20.9	20.7	13.4	7.8	18.9	40.0	25.1	27.0	26.6	5.2	12.0	:	10.8	42.9	26.0	21.0	14.3	4.9
1994	21.4	22.6	10.6	8.8	19.7	40.9	26.2	24.7	29.0	7.5	12.2	:	13.5	42.9	25.3	19.7	13.2	5.7
1995	20.1	22.3	8.1	8.8	19.4	36.9	23.7	20.8	29.0	6.4	10.7	4.4	15.1	36.7	20.6	18.1	12.5	6.2
Females																		
1989	:	21.2	11.6	:	30.9	42.3	23.9	18.6	34.8	5.0	11.4	:	13.6	10.1	3.8	9.4	10.4	4.3
1990	:	19.9	11.5	:	29.9	39.7	23.0	18.2	32.4	4.6	9.6	:	11.9	8.4	4.5	9.6	10.6	4.1
1991	17.6	18.0	12.2	6.3	31.3	37.9	25.0	20.9	30.3	3.1	9.1	:	11.1	17.2	7.1	11.6	12.4	4.2
1992	19.2	18.2	13.3	7.0	34.3	40.6	26.8	22.8	31.7	3.7	8.6	:	11.2	30.5	11.1	13.0	13.0	4.2
1993	22.0	23.0	14.1	8.1	36.1	47.6	29.7	23.0	35.1	5.6	10.1	:	15.3	40.7	19.0	14.2	12.2	5.2
1994	23.0	26.0	11.6	8.6	37.0	50.1	32.0	20.6	36.4	7.2	10.7	:	17.0	41.5	19.8	13.7	11.6	5.4
1995	23.2	26.8	12.4	8.6	37.7	49.0	31.1	17.9	38.5	7.9	12.4	6.9	18.6	39.9	18.1	13.3	11.6	6.0
25 years and over																		
Males																		
1989	:	3.8	5.7	:	2.6	9.8	5.6	12.5	4.0	1.0	4.2	:	2.2	2.6	1.2	6.5	3.9	1.9
1990	:	3.3	6.1	:	2.6	9.0	5.4	11.1	3.7	1.0	3.7	:	2.1	2.8	1.3	6.3	4.4	1.7
1991	5.5	3.5	6.7	4.5	2.9	9.6	6.0	12.1	3.4	1.0	3.4	:	2.0	6.9	2.7	8.4	5.7	1.7
1992	6.5	4.2	7.5	5.1	3.4	11.4	6.8	12.8	3.8	1.4	3.5	:	2.6	11.7	5.5	10.1	6.4	1.8
1993	7.9	5.3	8.8	6.4	4.0	15.0	8.2	12.9	4.9	1.9	4.5	:	3.7	15.3	9.0	10.5	5.8	2.1
1994	8.2	6.2	6.6	7.0	4.4	15.8	8.6	11.9	5.9	2.1	5.3	:	4.8	15.5	9.3	9.6	4.8	2.5
1995	7.9	6.1	5.2	6.9	4.6	14.8	8.2	10.4	6.3	1.5	5.0	2.7	5.0	13.8	8.7	8.6	4.3	2.7
Females																		
1989	:	10.1	7.3	:	7.1	19.1	10.1	14.1	9.7	2.1	9.8	:	5.1	2.4	1.2	6.3	4.2	2.0
1990	:	8.9	7.7	:	6.8	18.7	9.8	13.1	9.0	2.0	8.9	:	4.8	2.0	1.3	5.8	4.3	1.8
1991	8.3	8.6	8.8	7.1	7.8	19.3	10.0	13.9	8.8	2.1	8.1	:	4.2	4.2	2.1	6.3	5.1	1.8
1992	9.2	8.9	9.5	8.8	8.8	21.1	10.8	13.6	8.8	2.6	7.3	:	3.6	7.8	3.6	6.5	5.7	1.9
1993	10.3	10.0	10.0	9.9	9.3	24.1	11.5	13.6	10.3	2.9	7.3	:	5.2	12.1	6.0	6.6	5.4	2.2
1994	10.8	11.0	8.8	10.3	9.4	26.3	12.1	12.6	11.5	3.5	7.7	:	6.3	13.2	6.6	6.1	4.9	2.5
1995	10.6	11.0	7.8	9.9	9.6	25.7	11.7	11.1	11.9	3.7	7.7	4.6	6.5	13.4	6.8	5.7	4.4	2.7

Number of unemployed, annual averages

1000



	EUR 15	Belgique/ België	Danmark	Deutschland	Ελλάδα	España	France	Ireland	Italia	Luxembourg	Nederland	Österreich	Portugal	Suomi/ Finland	Sverige	United Kingdom	USA	Japan	
Total																			
Males and females																			
1989	:	290.5	209.9	:	262.3	2544.5	2238.2	189.5	2311.5	2.9	451.4	:	228.1	89.6	73.7	2081.9	6519.8	1418.6	
1990	:	260.6	221.0	:	254.7	2435.5	2152.7	175.7	2123.9	2.7	413.2	:	213.2	88.3	82.7	2022.4	6873.7	1343.3	
1991	13624.5	263.0	242.9	2195.2	276.3	2476.7	2323.3	197.5	2064.3	2.8	395.1	:	190.9	190.2	148.1	2528.4	8426.1	1359.2	
1992	15337.7	295.4	265.8	2580.0	317.5	2810.0	2557.6	209.5	2097.5	3.6	394.4	:	199.3	320.5	260.4	2891.1	9384.3	1422.5	
1993	17784.2	365.5	289.1	3090.3	351.5	3502.6	2908.8	215.1	2345.6	4.5	467.1	:	270.3	428.6	414.9	2979.0	8733.8	1656.7	
1994	18469.9	416.2	228.8	3299.3	369.5	3727.4	3049.9	202.2	2570.8	5.4	516.3	:	332.6	435.3	426.2	2744.0	7996.5	1920.8	
1995	17864.4	416.2	198.2	3209.0	380.1	3574.0	2907.7	177.7	2683.0	4.8	508.3	146.7	346.5	407.7	404.4	2499.9	7404.3	2099.2	
Males																			
1989	:	111.3	102.9	:	102.1	1250.5	943.4	122.7	1045.7	1.4	194.9	:	91.6	46.0	37.6	1214.3	3517.1	828.3	
1990	:	97.8	108.7	:	98.7	1162.0	907.5	111.3	954.7	1.3	176.2	:	85.7	52.2	43.2	1206.4	3799.0	773.3	
1991	6737.5	104.0	115.7	1031.2	110.7	1197.3	1004.1	124.4	934.2	1.4	168.3	:	75.4	117.4	84.8	1615.6	4817.3	771.7	
1992	7789.2	126.6	127.9	1163.0	126.9	1402.7	1132.6	131.8	964.6	1.8	179.7	:	95.0	190.2	160.7	1927.6	5379.7	820.0	
1993	9308.8	166.4	144.9	1481.7	146.2	1849.1	1364.7	134.1	1116.6	2.4	237.9	:	125.8	241.2	253.9	1976.5	4932.4	947.5	
1994	9575.1	193.6	109.7	1609.2	157.0	1900.9	1416.6	125.2	1260.4	2.8	267.9	:	160.7	239.2	254.7	1813.3	4367.7	1123.3	
1995	9053.0	191.4	87.6	1575.4	161.6	1750.7	1321.6	109.2	1302.9	2.1	248.1	63.3	170.5	212.1	231.2	1625.3	3983.0	1230.0	
Females																			
1989	:	179.2	107.0	:	160.2	1293.9	1294.8	66.7	1265.8	1.5	256.4	:	136.5	43.6	36.1	867.7	3002.8	590.3	
1990	:	162.8	112.3	:	156.0	1273.5	1245.2	64.4	1169.2	1.4	237.1	:	127.5	36.1	39.6	816.0	3074.7	570.0	
1991	6887.0	159.0	127.2	1164.1	165.6	1279.3	1319.1	73.1	1130.1	1.4	226.8	:	115.5	72.8	63.3	912.8	3608.8	587.5	
1992	7548.5	168.8	137.9	1417.0	190.5	1407.4	1425.0	77.8	1132.9	1.7	214.6	:	104.3	130.2	99.7	963.5	4004.7	602.5	
1993	8475.4	199.1	144.1	1608.6	205.3	1653.4	1544.1	81.0	1228.9	2.1	229.2	:	144.5	187.4	161.0	1002.5	3801.3	709.2	
1994	8894.9	222.6	119.0	1690.1	212.5	1826.5	1633.3	77.0	1310.4	2.6	248.4	:	171.9	196.1	171.5	930.6	3628.8	797.5	
1995	8811.4	224.8	110.6	1633.6	218.5	1823.3	1586.1	68.4	1380.1	2.7	260.2	83.4	176.1	195.6	173.3	874.6	3421.3	869.2	
Under 25 years																			
Males and females																			
1989	:	83.4	64.0	:	119.2	1053.4	688.8	60.2	1156.4	1.1	128.5	:	101.8	35.4	28.9	639.1	2411.0	365.8	
1990	:	75.7	63.1	:	115.5	976.4	642.2	57.0	1046.0	0.9	113.8	:	90.7	35.3	33.1	637.3	2369.6	361.7	
1991	4436.7	73.4	63.1	349.4	121.5	921.0	678.8	66.0	1018.5	0.8	109.3	:	73.8	69.9	53.8	799.6	2766.6	385.8	
1992	4728.9	78.7	65.5	353.5	132.5	999.9	709.1	69.3	1003.8	1.0	113.0	:	80.2	110.8	84.2	892.2	2898.8	399.2	
1993	5318.5	102.5	68.5	414.5	142.4	1231.5	797.2	70.9	1035.3	1.2	143.9	:	97.7	137.9	125.2	911.4	2717.0	455.0	
1994	5259.0	114.1	54.5	427.9	143.2	1244.0	798.4	63.9	1042.6	1.6	144.5	:	112.5	129.6	120.6	826.9	2692.6	499.2	
1995	4958.5	111.5	51.9	403.6	141.6	1148.6	721.0	53.7	1057.4	1.4	144.1	34.0	116.3	115.0	102.3	756.0	2590.3	539.2	

Methodological notes

1. The Eurostat unemployment rates are calculated according to the recommendations of the 13th International Conference of Labour Statisticians organised by the International Labour Office (ILO) in 1982.
Unemployed persons are those persons aged 15 years and over who
 - are without work
 - are available to start work within the next two weeks
 - and have actively sought employment at some time during the previous four weeks.
2. The unemployment estimates are based on the results of the European Community Labour Force Survey. It is carried out in the spring of each year. The use of the same definitions and concepts throughout the EU ensures comparability of the results between Member States.
3. The **unemployment rate** is the number of unemployed as a percentage of the labour force (people living in collective households are excluded). The labour force is the total of the employed and the unemployed.
Monthly estimates of the **number of unemployed** are derived by interpolating/extrapolating each year's Community Labour Force Survey results using the results of the national labour force surveys (see table A) and monthly indicators of unemployment (see table B).
Monthly estimates of **employment** are obtained by
 - interpolating/extrapolating linearly the annual Community LFS results (Belgium, Denmark, Germany, Greece, France, Ireland, Luxembourg, Netherlands)
 - interpolating/extrapolating linearly the results of the national quarterly labour force surveys after adjustment to the Community LFS (Spain, Italy, Portugal, United Kingdom)
 - using the results of the national monthly labour force surveys (Finland, Sweden, USA, Japan).
4. Estimates are made separately for males under 25, females under 25, males aged 25 years and over, and females aged 25 years and over. Totals are obtained by adding up these four basic categories.
5. The figures for the four basic categories are seasonally adjusted using the multiplicative version of the X-11 method of the US Bureau of the Census.
The reliability of the figures is adversely affected if deseasonalisation is performed on short series (such as Germany since the reunification) or where breaks occur (such as Sweden since 1993).
6. From 1992, in some member States, the more restrictive application of the ILO guidelines introduces a break in the series. In such cases, no estimates are provided for the period before 1992.

Table A: Reference period of the last surveys used

Country	Community labour force surveys	National labour force surveys
Belgium	1995Q2	-
Denmark	1995Q2	-
Germany	1995Q2	-
Greece	1995Q2	-
Spain	1995Q2	1996Q3
France	1996Q2	-
Ireland	1995Q2	-
Italy	1995Q2	1996Q3
Luxembourg	1995Q2	-
Netherlands	1995Q2	-
Austria	1995Q2	1995Q1
Portugal	1995Q2	1996Q3
Finland	-	1996OCT
Sweden	-	1996OCT
United Kingdom	1995Q2	1996Q3

NB: 1994Q2 = 2nd quarter of 1994

Table B: Monthly indicators of unemployment.

BELGIUM: All persons in the following categories registered at employment offices: wholly unemployed persons in receipt of benefit, other unemployed persons compulsory registered and voluntarily registered persons without work.

Series provided by the Office National de l'Emploi.

DENMARK: Persons seeking full-time or part-time employment, whether or not they are members of an unemployment insurance fund.

Series provided by Danmarks Statistik.

GERMANY: Unemployed persons registered at public employment offices and seeking work as employees for at least 18 hours per week.

Series provided by the Bundesanstalt für Arbeit.

GREECE: No monthly indicator

SPAIN: Unemployed persons registered at public employment offices and seeking work as employees for 20 hours or more per week.

Series provided by the Ministerio de Trabajo y Seguridad Social.

FRANCE: Unemployed persons registered at the Agence de l'Emploi and seeking permanent full-time employment (demandeurs de catégorie 1).

Series provided by the Ministère du Travail, de l'Emploi et de la Formation Professionnelle.

IRELAND: Claimants for unemployment benefit, applicants for unemployment assistance and others seeking work who are registered with the employment services of the Department of Social Welfare. Excluded are persons seeking part-time employment.

Series provided by the Central Statistics Office.

ITALY: Persons without work, persons seeking their first job, persons working part-time for less than 20 hours per week and workers on a fixed-term contract of not more than 4 months in any 12-month period, who are looking for a different job.

Series provided by the Ministero del Lavoro e della Previdenza Sociale.

LUXEMBURG: Unemployed persons registered at employment offices and seeking work as employees for at least 20 hours per week.

Series provided by the Administration de l'Emploi.

NETHERLANDS: Persons registered at employment offices, between the ages of 16 and 64 years,

- who are without work or with work less than 12 hours a week and
- who are immediately available for paid employment for at least 12 hours a week or who found a job and will start working for at least 12 hours a week.

Series provided by the CBS.

AUSTRIA: No monthly indicator.

PORTUGAL: Persons registered at employment offices who are available for work within 30 days after registration.

Series provided by the Instituto de Emprego e Formação Profissional.

FINLAND: Number of unemployed in the monthly labour force survey.

SWEDEN: Number of unemployed in the monthly labour force survey.

UNITED KINGDOM: Persons seeking full-time work and claiming unemployment benefit because they are out of work.

Series provided by the Department of Employment.

SHORT-TERM EMPLOYMENT TRENDS

Supplement to the Unemployment Monthly 12/1996

This edition of Eurostat's Unemployment Monthly contains, for the first time, a supplement on short-term (quarterly) employment trends in the Member States of the European Union, in the US and Japan. In future, this supplement will be included in the Unemployment Monthly edition of the last month of each quarter.

Using the best available source for each country, the most recent employment trend for the economy as a whole is presented (see methodological notes on page 18). The employment data given in the table are taken from different sources. They show the *trends*, but should *not* be used for comparisons of *levels*.

Second quarter 1996

Employment in the European Union was higher in the second quarter of 1996 than in the corresponding quarter of the previous year according to estimates based on 11 of the 15 Member States (No data was available for Belgium, Greece, Ireland and the Netherlands). The increase is relatively modest at 0.3%, but this is nevertheless the seventh successive quarter in which employment is higher than one year previously.

In almost all the countries for which data was available, the employment figures were higher than in the corresponding quarter last year. The increase over the year was greatest in Spain and Luxembourg, where it exceeded 2%.

The only countries where the employment fell, were Germany and Sweden. In Sweden, the decrease in the second quarter's figures compared with 1995 followed a period of increasing employment, whereas in Germany the number of employed persons has been falling for several years.

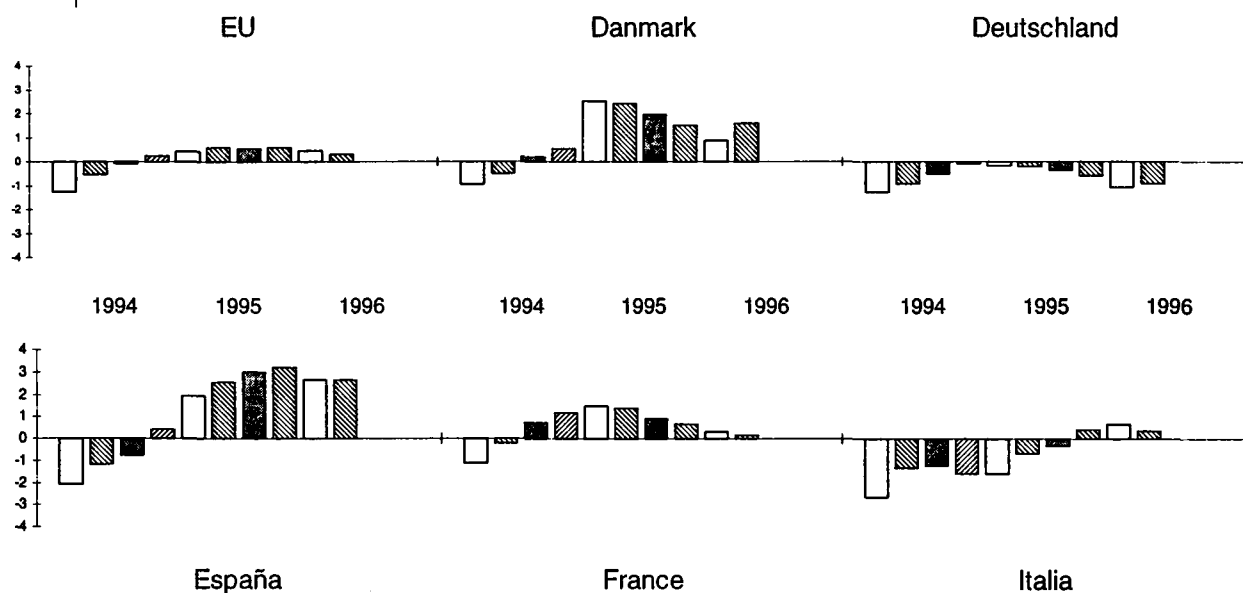
The employment figures compared with the corresponding quarter of the previous year have been rising for some time in a number of Member States, including Denmark, Spain, France, Luxembourg, Finland and the United Kingdom as well as in the United States. In the case of France, however, this increase has become noticeably smaller.

Employment indicators

Not seasonally adjusted

	EU (1)	Belgique/ België	Danmark	Deutschland	Ελλάδα	España	France (2)	Ireland	Italia	Luxembourg
Absolute figures (1000)										
1993Q1	:	:	1956	35188	:	11882	13265	:	20564	201.9
1993Q2	:	3744	1994	35202	3715	11868	13180	1155	20420	204.1
1993Q3	:	:	1979	35238	:	11877	13137	:	20553	204.7
1993Q4	:	:	2046	35232	:	11724	13110	:	20329	205.4
1994Q1	:	:	1938	34753	:	11635	13114	:	20020	205.3
1994Q2	:	3748	1984	34889	3786	11728	13156	1207	20147	207.6
1994Q3	:	:	1983	35071	:	11788	13230	:	20304	208.7
1994Q4	:	:	2057	35203	:	11770	13265	:	20005	210.3
1995Q1	:	:	1986	34700	:	11860	13310	:	19702	209.9
1995Q2	:	3793	2032	34818	3821	12027	13335	1262	20011	212.9
1995Q3	:	:	2021	34951	:	12137	13347	:	20240	214.3
1995Q4	:	:	2088	35003	:	12143	13353	:	20086	215.2
1996Q1	:	:	2004	34328	:	12174	13353	:	19833	214.9
1996Q2	:	:	2064	34500	:	12342	13355	:	20079	217.9

	Change over 4 quarters (%)									
1994Q1	-1.2	:	-1.0	-1.2	:	-2.1	-1.1	:	-2.6	1.7
1994Q2	-0.5	0.1	-0.5	-0.9	1.9	-1.2	-0.2	4.5	-1.3	1.7
1994Q3	-0.1	:	0.2	-0.5	:	-0.8	0.7	:	-1.2	2.0
1994Q4	0.2	:	0.5	-0.1	:	0.4	1.2	:	-1.6	2.4
1995Q1	0.4	:	2.5	-0.2	:	1.9	1.5	:	-1.6	2.2
1995Q2	0.6	1.2	2.4	-0.2	0.9	2.6	1.4	4.6	-0.7	2.6
1995Q3	0.5	:	2.0	-0.3	:	3.0	0.9	:	-0.3	2.7
1995Q4	0.6	:	1.5	-0.6	:	3.2	0.7	:	0.4	2.3
1996Q1	0.4	:	0.9	-1.1	:	2.6	0.3	:	0.7	2.4
1996Q2	0.3	:	1.6	-0.9	:	2.6	0.1	:	0.3	2.3



(1) Excluding Belgique/België, Ελλάδα, Ireland and Nederland
 (2) Seasonally adjusted

Employment indicators

Not seasonally adjusted

Nederland	Österreich	Portugal	Finland	Sverige	United Kingdom	Norge	Iceland	USA	Japan	
Absolute figures (1000)										
:	3004	4437	2018	3983	25405	:	:	116755	63120	1993Q1
6640	3052	4446	2074	3987	25512	:	:	119215	65123	1993Q2
:	3120	4412	2079	3991	25689	:	:	120685	65027	1993Q3
:	3044	4403	1991	3894	25678	:	:	120571	64720	1993Q4
:	3011	4382	1952	3840	25533	:	:	120416	63310	1994Q1
6706	3064	4420	2048	3939	25697	:	:	122805	65350	1994Q2
:	3138	4438	2078	3996	25944	:	:	124257	64970	1994Q3
:	3070	4417	2018	3931	25964	:	:	124783	64500	1994Q4
:	3024	4375	1993	3901	25830	:	:	123295	63397	1995Q1
6782	3023	4394	2105	4019	25973	:	:	124851	65200	1995Q2
:	3045	4380	2124	4105	26272	:	:	125882	65310	1995Q3
:	3069	4388	2049	3964	26265	:	:	125571	64443	1995Q4
:	2984	4402	2027	3929	26179	:	:	124085	63387	1996Q1
:	3042	4406	2127	3974	26219	:	:	126495	65383	1996Q2

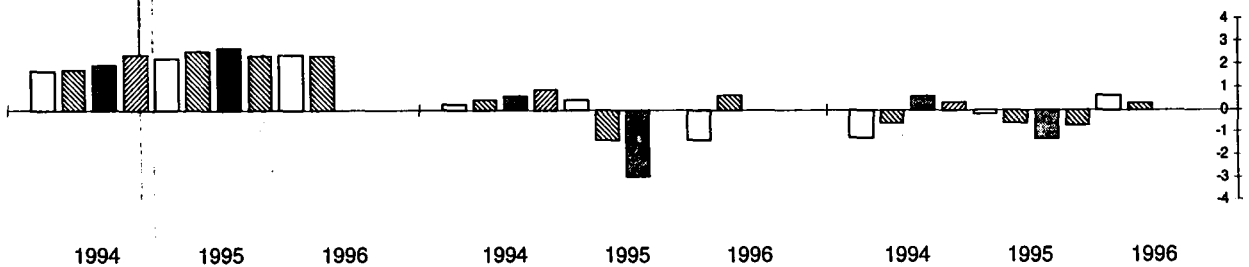
Change over 4 quarters (%)

:	0.2	-1.2	-3.3	-3.6	0.5	:	:	3.1	0.3	1994Q1
1.0	0.4	-0.6	-1.3	-1.2	0.7	:	:	3.0	0.3	1994Q2
:	0.6	0.6	0.0	0.1	1.0	:	:	3.0	-0.1	1994Q3
:	0.9	0.3	1.4	0.9	1.1	:	:	3.5	-0.3	1994Q4
:	0.4	-0.2	2.1	1.6	1.2	:	:	2.4	0.1	1995Q1
1.1	-1.3	-0.6	2.7	2.0	1.1	:	:	1.7	-0.2	1995Q2
:	-3.0	-1.3	2.2	2.7	1.3	:	:	1.3	0.5	1995Q3
:	0.0	-0.7	1.5	0.8	1.2	:	:	0.6	-0.1	1995Q4
:	-1.3	0.6	1.7	0.7	1.4	:	:	0.6	0.0	1996Q1
:	0.6	0.3	1.1	-1.1	0.9	:	:	1.3	0.3	1996Q2

Luxembourg

Österreich

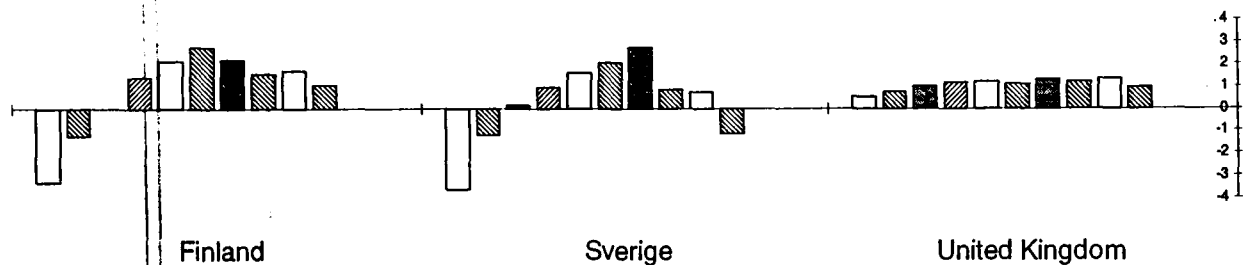
Portugal



Finland

Sverige

United Kingdom



Methodological notes

The statistics given in this supplement are those which the National Statistical Institutes of the reporting countries consider best for the analysis of overall short-term employment trends. It should be noted that both the selected employment indicators and the statistical sources differ between countries. For this reason, the figures are appropriate for assessing the trends, but should not be used to compare levels of employment.

Indicators and statistical sources are as follows:

- DK: Full-time equivalents (domestic concept).
Source: ATP-statistics (ATP: labour market supplementary pension scheme).
- D: Total employment (including armed forces); domestic concept.
Source: National Accounts.
- F: Employees (domestic concept) (all sectors except agriculture, public administration, education, health and social work).
Source: Data are based on information from the survey on activity and working conditions of the labour force (ACEMO) and on unemployment insurance data (UNEDIC).
- L: Total employment (including armed forces); domestic concept.
Source: social security files.
- A: Employees (domestic concept).
Source: social security files.
- E, I, P, FIN, S, UK, JAP:
Persons in employment living in private households (including armed forces); national concept.
Source: Labour Force Survey.
In the UK the concept of seasonal (not calendar) quarter is used, i.e. the second quarter, for example, refers to the months of March, April and May.
- USA: Persons in employment living in private households (excluding armed forces); national concept.
Source: Current Population Survey.

Domestic concept : This covers persons employed in this Member State, irrespective of whether they live in this Member State or else where.

National concept : This covers employed persons resident in this Member State, irrespective of whether their place of employment is in this Member State or elsewhere.

For those countries for which no quarterly data is available (B, EL, IRL, NL) the results of the European Labour Force Survey (carried out in spring of each year) are given in the table.

BELGIQUE/BELGIE

Moniteur belge/Belgisch Staatsblad

Rue de Louvain 40-42/
Leuvenseweg 40-42
B-1000 Bruxelles/Brussel
Tél. (32-2) 552 22 11
Fax (32-2) 511 01 84

Jean De Lannoy

Avenue du Roi 202/
Koningslaan 202
B-1060 Bruxelles/Brussel
Tél. (32-2) 538 51 69
Fax (32-2) 538 08 41
e-mail: jean.de.lannoy@infoboard.be

**Librairie européenne/
Europese Boekhandel**

Rue de la Loi 244/
Wetstraat 244
B-1040 Bruxelles/Brussel
Tél. (32-2) 235 25 39
Fax (32-2) 735 08 60

DANMARK

J. H. Schultz Information A/S

Herstedvang 10-12
DK-2620 Albertslund
Tlf. (45) 43 63 23 00
Fax (45) 43 63 19 69
e-mail: schultz@schultz.dk

DEUTSCHLAND

Bundesanzeiger Verlag

Breite Straße 78-80
Postfach 10 05 34
D-50667 Köln
Tel. (49-221) 20 29-0
Fax (49-221) 20 29 278

GREECE/ELLADA

G.C. Eleftheroudakis SA

International Bookstore
Panepistimiou 17
GR-105 64 Athens
Tel. (30-1) 331 41 82
Fax (30-1) 323 98 21

ESPAÑA

Mundi Prensa Libros, SA

Castelló, 37
E-28001 Madrid
Tel. (34-1) 431 33 99/431 32 22/435 36 37
Fax (34-1) 575 39 98
e-mail: mundiprensa@tsai.es

Boletín Oficial del Estado

Trafalgar 27-29
E-28010 Madrid
Tel. (34-1) 538 22 95/538 22 97
Fax (34-1) 538 22 67

Sucursal:

Mundi Prensa Barcelona

Consell de Cent, 391
E-08009 Barcelona
Tel. (34-3) 488 34 92
Fax (34-3) 487 75 59

Libreria de la Generalitat de Catalunya

Rambles dels Estudis, 118
Palau Moja
E-08002 Barcelona
Tel. (34-3) 302 63 35/302 64 62
Fax (34-3) 302 12 99

FRANCE

Journal officiel

Service des publications des CE
26, rue Desaix
F-75727 Paris Cedex 15
Tél. (33-1) 40 58 77 01/31
Fax (33-1) 40 58 77 00

IRELAND

Government Supplies Agency

Publications Section
4-5 Harcourt Road
Dublin 2
Tel. (353-1) 661 31 11
Fax (353-1) 475 27 60

ITALIA

Licosa SpA

Via Duca di Calabria 1/1
Casella postale 552
I-50125 Firenze
Tel. (39-55) 64 54 15
Fax (39-55) 64 12 57
e-mail: licosa@fbcc.it

GRAND-DUCHÉ DE LUXEMBOURG

Messageries du livre Sàrl

5, rue Raiffeisen
L-2411 Luxembourg
Tél. (352) 40 10 20
Fax (352) 490 661
e-mail: mol@pt.lu

Abonnements:

Messageries Paul Kraus

11, rue Christophe Plantin
L-2339 Luxembourg
Tél. (352) 499 88 88
Fax (352) 499 888 444
e-mail: mpk@pt.lu

NETHERLAND

SDU Uitgeverijen

Externe Fondsen
Christoffel Plantijnstraat 2
Postbus 20014
2500 EA 's-Gravenhage
Tel. (31-70) 378 98 80
Fax (31-70) 378 97 83

ÖSTERREICH

**Manz'sche Verlags-
und Universitätsbuchhandlung GmbH**

Siebenbrunnengasse 21
Postfach 1
A-1050 Wien
Tel. (43-1) 53 161 (334 oder 340)
Fax (43-1) 53 161 (339)
e-mail: auslieferung@manz.co.at

PORTUGAL

Imprensa Nacional-Casa da Moeda, EP

Rua Marquês de Sá da Bandeira, 16 A
P-1050 Lisboa Codex
Tel. (351-1) 353 03 99
Fax (351-1) 353 02 94/384 01 32

Distribuidora de Livros

Bertrand Ld.^a
Grupo Bertrand, SA
Rua das Terras das Vales, 4-A
Apartado 60037
P-2700 Amadora Codex
Tel. (351-1) 495 90 50/495 87 87
Fax (351-1) 496 02 55

SUOMI/FINLAND

**Akateeminen Kirjakauppa /
Akademiska Bokhandeln**

Pohjoisesplanadi 39/
Norra esplanaden 39
PL/PB 128
FIN-00101 Helsinki/Helsingfors
Tel. (358) 121 41
Fax (358) 121 44 35
e-mail: akatilaus@stockmann.mailnet.fi

SVERIGE

BTJ AB

Traktorvägen 11
PO Box 200
S-221 00 LUND
Tel. (46) 18 00 00
Fax (46) 18 01 25

UNITED KINGDOM

HMSO Books (Agency Section)

HMSO Publications Centre
51, Nine Elms Lane
London SW8 5DR
Tel. (44-171) 873 9090
Fax (44-171) 873 8463

ICELAND

Bokabud Larusar Blöndal

Skólavörðustíg, 2
IS-101 Reykjavík
Tel. (354) 55 15 650
Fax (354) 55 25 560

NORGE

NIC Info A/S

Bertrand Narvesens vei 2
Boks 6512 Etterstad
N-0606 Oslo
Tel. (47-22) 57 33 34
Fax (47-22) 68 19 01

SCHWEIZ/SUISSE/SVIZZERA

OSEC

Stampfenbachstraße 85
CH-8035 Zürich
Tel. (41-1) 365 54 54
Fax (41-1) 365 54 11
e-mail: urs.leimbacher@ecs.osec.inet.ch

BÄLGARIJA

Europress Klassica Bk Ltd

76, Gurko Street
BG-1463 Sofia
Tel. (359-2) 81 64 73
Fax (359-2) 81 64 73

ČESKÁ REPUBLIKA

NIS ČR - prodejna

Konviktská 5
CZ-113 57 Praha 1
Tel. (42-2) 24 22 94 33/24 23 09 07
Fax (42-2) 24 22 94 33
e-mail: nkposp@dec.nis.cz

HRVATSKA

Mediatrade Ltd

Pavla Hatza 1
HR-4100 Zagreb
Tel. (38-1) 43 03 92
Fax (38-1) 44 40 59

MAGYARORSZÁG

Euro Info Service

Európa Ház
Margitsziget
H-1138 Budapest
Tel. (36-1) 11 16 061/11 16 216
Fax (36-1) 302 50 35

POLSKA

Business Foundation

ul. Krucza 38/42
PL-00-512 Warszawa
Tél. (48-22) 621 99 93/628 28 82
Fax (48-22) 621 97 61- Free line (0-39) 12 00 77

ROMÂNIA

Euromedia

Str. G-ral Berthelot Nr 41
RO-70749 Bucuresti
Tél. (41) 210 44 01/614 06 64
Fax (41) 210 44 01

RUSSIA

CCEC

9,60-letiya Oktyabrya Av.
117312 Moscow
Tel. (095) 135 52 27
Fax (095) 135 52 27

SLOVAKIA

Slovenska Technicka Kniznica

Námestie slobody 19
SLO-81223 Bratislava 1
Tel. (42-7) 53 18 364
Fax (42-7) 53 18 364
e-mail: europ@tbb1.sltk.stuba.sk

MALTA

Miller Distributors Ltd

Malta International Airport
PO Box 25
LQA 05 Malta
Tel. (356) 66 44 88
Fax (356) 67 67 99

TÜRKIYE

Dünya Infotel A.S.

Istiklal Caddesi No 469
TR-80050 Tünel-Istanbul
Tel. (90-212) 251 91 96 / 427 02 10
Fax (90-212) 251 91 97

ISRAEL

R.O.Y. International

17, Shimon Hatarssi Street
PO Box 13056
61130 Tel Aviv
Tel. (972-3) 546 14 23
Fax (972-3) 546 14 42
e-mail: royil@netvision.net.il

Sub-agent for the Palestinian Authority:

Index Information Services

PO Box 19502
Jerusalem
Tel. (972-2) 27 16 34
Fax (972-2) 27 12 19

EGYPT

The Middle East Observer

41, Sherif Street
Cairo
Tel. (20-2) 39 26 919
Fax (20-2) 39 39 732

UNITED STATES OF AMERICA

Unipub

4611-F Assembly Drive
MD20706 Lanham
Tel. (800) 274-4888 (toll free telephone)
Fax (800) 865-3450 (toll free fax)

CANADA

**Uniquement abonnements/
Subscriptions only:**

Renouf Publishing Co. Ltd

1294 Algoma Road
K1B 3W8 Ottawa, Ontario
Tel. (1-613) 741 73 33
Fax (1-613) 741 54 39
e-mail: renouf@fox.nstn.ca
For monographs see: Unipub

AUSTRALIA

Hunter Publications

PO Box 404
3167 Abbotsford, Victoria
Tel. (3) 9417 53 61
Fax (3) 9419 71 54

JAPAN

PSI-Japan

Kyoku Dome, Tokyo Kojimachi P.O.
Tokyo 102
Tel. (81-3) 3234 69 21
Fax (81-3) 3234 69 15
e-mail: psijapan@gol.com
URL: www.psi-japan.com

SOUTH AND EAST ASIA

Legal Library Services Limited

Orchard
PO Box 0523
912318 Singapore
Tel. (65) 243 24 98
Fax (65) 243 24 79
e-mail: elaine@leg-liby.demon.co.uk

SOUTH AFRICA

Safto

5th Floor Export House,
CNR Maude & West Streets
PO Box 782 706
2146 Sandton
Tel. (27-11) 883 37 37
Fax (27-11) 883 65 69

**ANDERE LÄNDER
OTHER COUNTRIES
AUTRES PAYS**

Bitte wenden Sie sich an ein Büro Ihrer Wahl
Please, address yourself to the sales office of your choice
Veuillez vous adresser au bureau de vente de votre choix

Price (excl. VAT) in Luxembourg: Single copy ECU 7 • Subscription ECU 62



OFICINA DE PUBLICACIONES OFICIALES DE LAS COMUNIDADES EUROPEAS
KONTOR ET FOR DE EUROPÆISKE FÆLLESSKABERS OFFICIELLE PUBLIKATIONER
AMT FÜR AMTLICHE VERÖFFENTLICHUNGEN DER EUROPÄISCHEN GEMEINSCHAFTEN
ΥΠΗΡΕΣΙΑ ΕΠΙΣΗΜΩΝ ΕΚΔΟΣΕΩΝ ΤΩΝ ΕΥΡΩΠΑΪΚΩΝ ΚΟΙΝΟΤΗΤΩΝ
OFFICE FOR OFFICIAL PUBLICATIONS OF THE EUROPEAN COMMUNITIES
OFFICE DES PUBLICATIONS OFFICIELLES DES COMMUNAUTÉS EUROPÉENNES
UFFICIO DELLE PUBBLICAZIONI UFFICIALI DELLE COMUNITÀ EUROPEE
BUREAU VOOR OFFICIËLE PUBLIKATIES DER EUROPESE GEMEENSCHAPPEN
SERVIÇO DAS PUBLICAÇÕES OFICIAIS DAS COMUNIDADES EUROPEIAS

L - 2985 Luxembourg

1781 5657 49

01/26/98

sc

MRB



Catalogue number: CA-BH-96-012-EN-C