

Unemployment

8/9 □ 1995 Monthly

5 September 1995

UNEMPLOYMENT IN THE EUROPEAN UNION

June and July 1995

Eurostat estimates that the seasonally-adjusted unemployment rate in the European Union (fifteen Member States) for the months of June and July 1995 was 10.7%. The decrease of 0.2% by comparison with the Spring figures can be attributed largely to falling unemployment in Spain, Italy and France.

A noticeable development in the EU generally is that the unemployment rate for young persons has fallen to near the 20% level. The downward trend for this group can be observed in all Member States with the following exceptions:

- in Portugal and Luxembourg the upward tendency of recent years has continued
- in Germany and the United Kingdom the figures are lower than in July 1994 but the trend over the last few months has been upward.



OFICINA ESTADÍSTICA DE LAS COMUNIDADES EUROPEAS
DE EUROPÆISKE FÆLLESSKABERS STATISTISKE KONTOR
STATISTISCHES AMT DER EUROPÄISCHEN GEMEINSCHAFTEN
ΣΤΑΤΙΣΤΙΚΗ ΥΠΗΡΕΣΙΑ ΤΩΝ ΕΥΡΩΠΑΪΚΩΝ ΚΟΙΝΟΤΗΤΩΝ
STATISTICAL OFFICE OF THE EUROPEAN COMMUNITIES
OFFICE STATISTIQUE DES COMMUNAUTÉS EUROPÉENNES
ISTITUTO STATISTICO DELLE COMUNITÀ EUROPEE
BUREAU VOOR DE STATISTIEK DER EUROPESE GEMEENSCHAPPEN
SERVIÇO DE ESTATÍSTICA DAS COMUNIDADES EUROPEIAS

L-2920 Luxembourg — Tél. 43 01-1 — Télex COMEUR LU 3423
B-1049 Bruxelles, rue de la Loi 200 — Tél. 299 11 11

This report has been produced by the *Population, migration, employment and unemployment* unit at Eurostat. The data presented are in line with the definitions and recommendations of the International Labour Office (*Current International Recommendations on Labour Statistics*, 1988 edition, ILO Geneva). The figures have been estimated by Eurostat on the basis of the European Labour Force Survey and are presented for individual Member States of the European Union in order to facilitate international comparisons.

These figures may therefore differ from those generally used in the Member States, which usually reflect national legislation and administrative procedures, and which for this reason are less comparable between Member States.

For further information : A. Persenaire tel. Lux.4301-32005
R. Brandenbourger tel. Lux.4301-33272

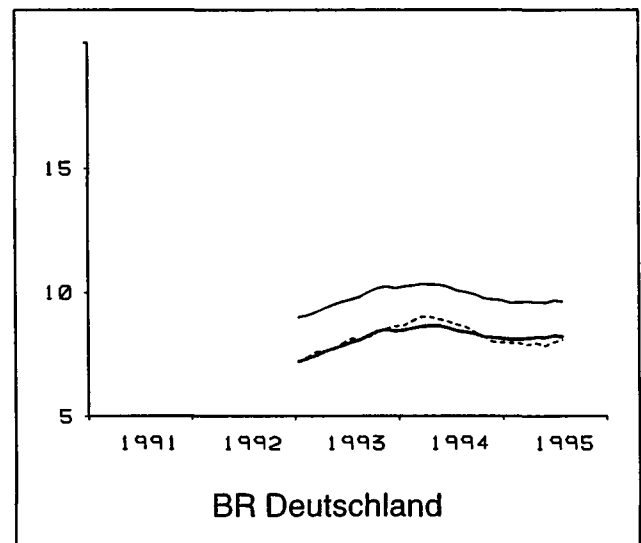
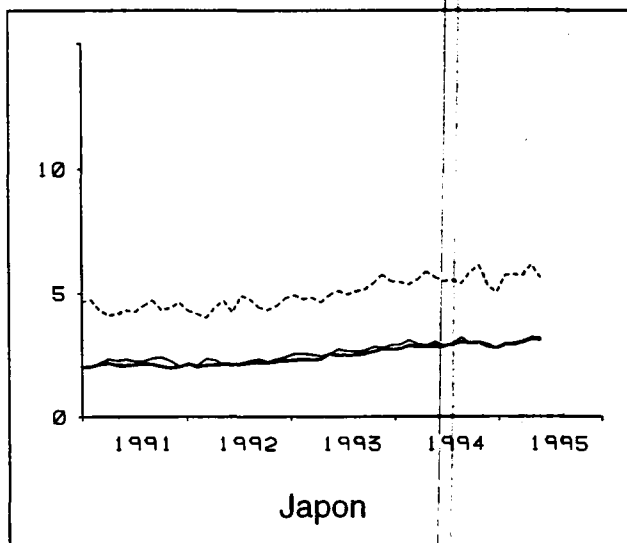
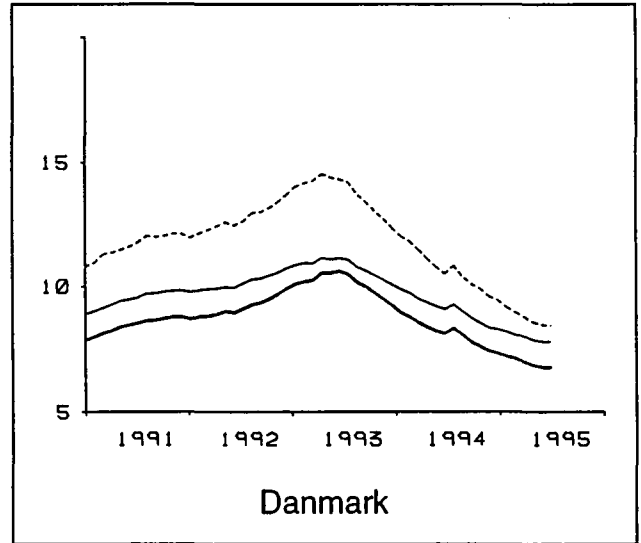
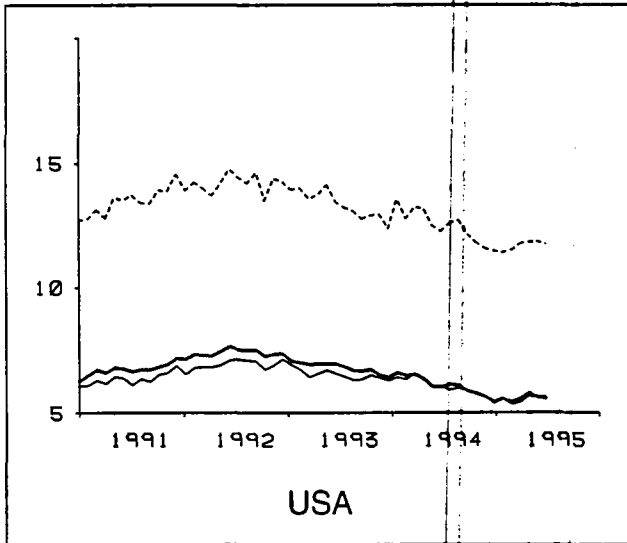
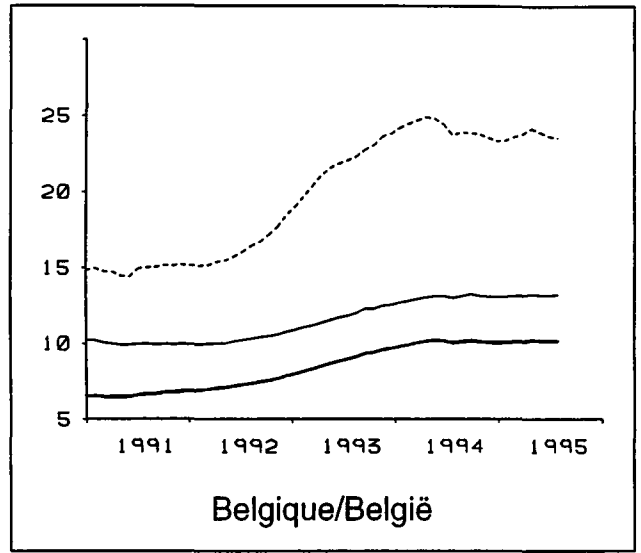
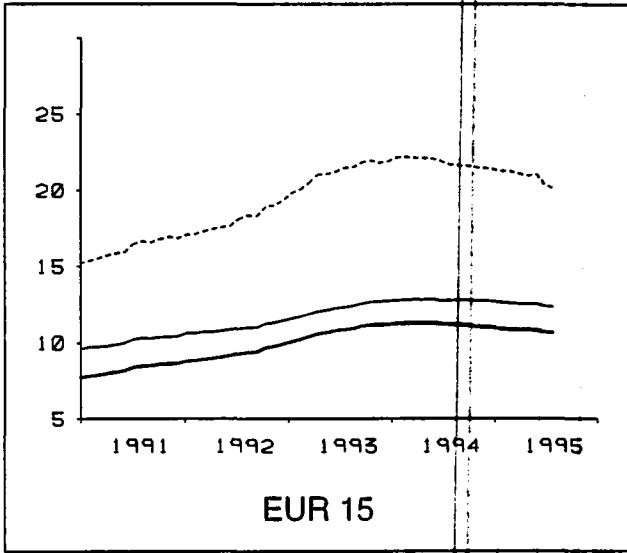
Table of contents :

Unemployment rates, seasonally-adjusted :	
- graphs.....	3-5
- tables	6-7
Unemployment rates, not seasonally-adjusted.....	8-9
Unemployment rates, annual averages.....	10-11
Number of unemployed, annual averages.....	12
Methodological notes.....	13-14

Signs and abbreviations :

Eur-15	All Member States of the European Union
T	Total
F	Females
< 25	Persons aged under 25
:	Data not available

Unemployment rates, seasonally adjusted (%)



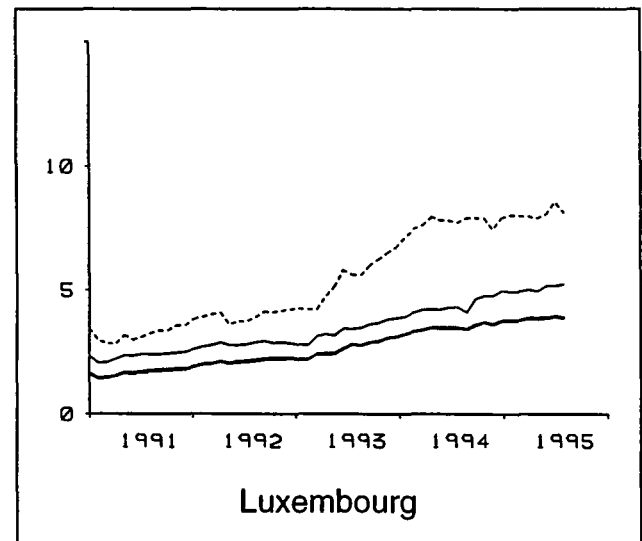
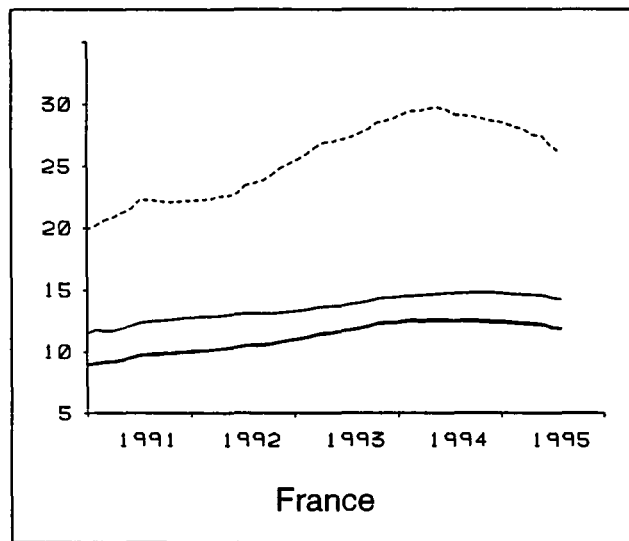
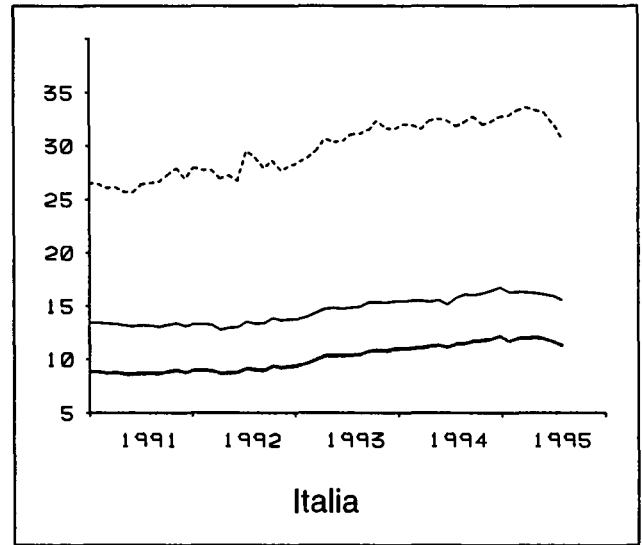
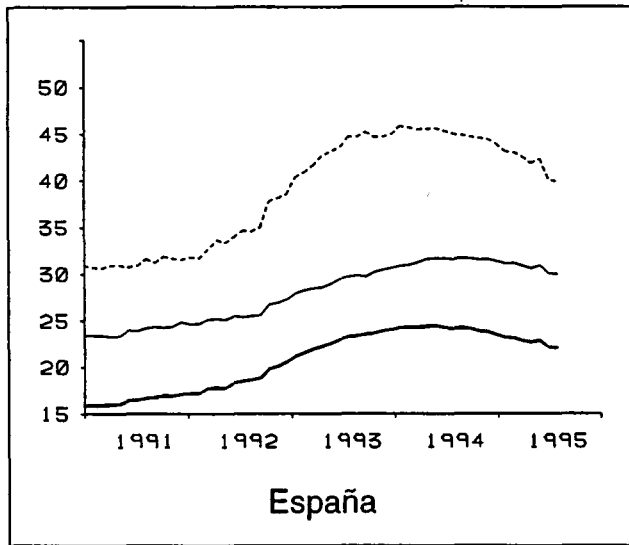
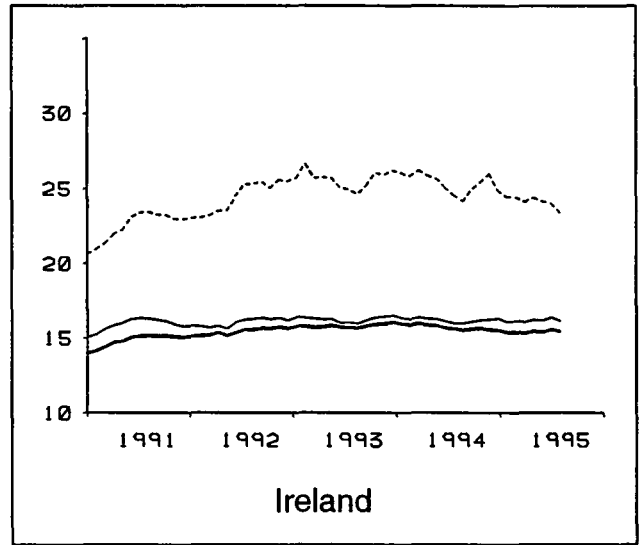
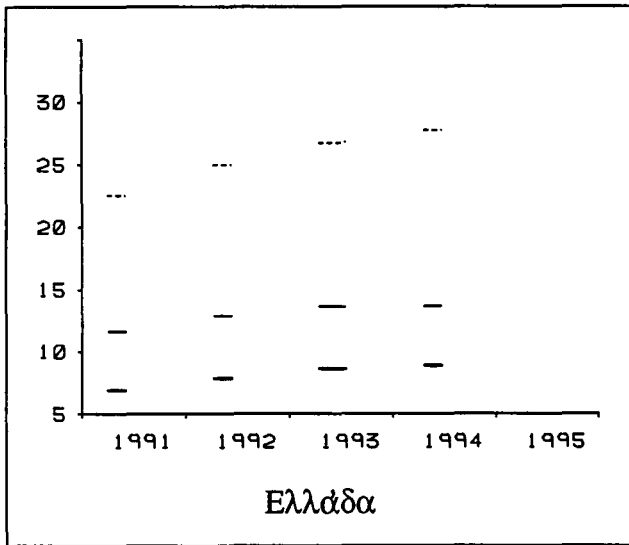
— Total

- - - Under 25 years

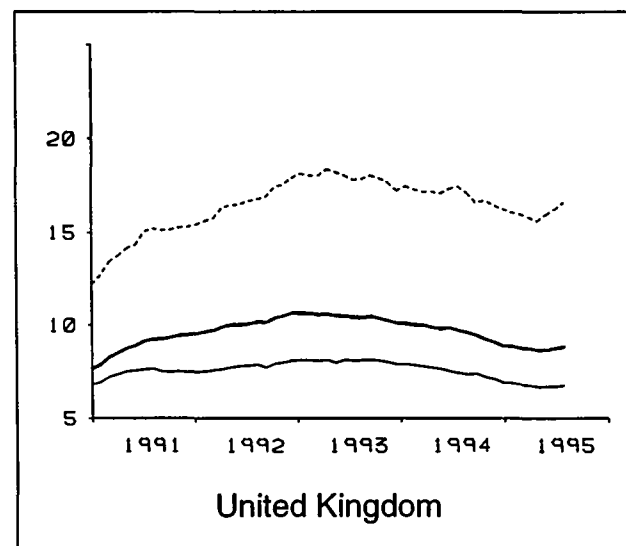
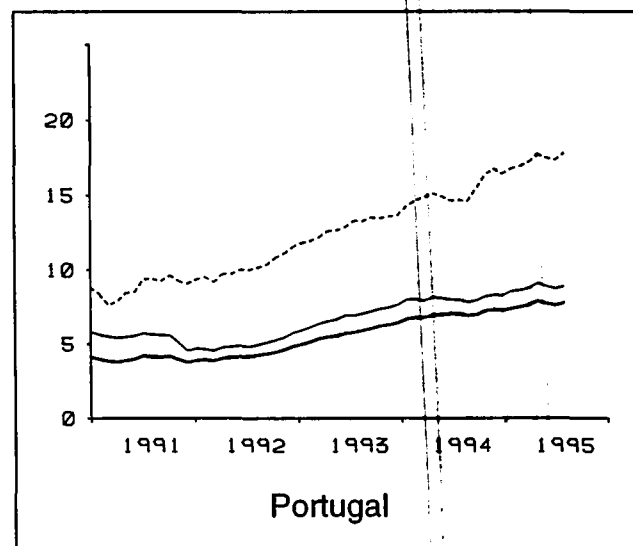
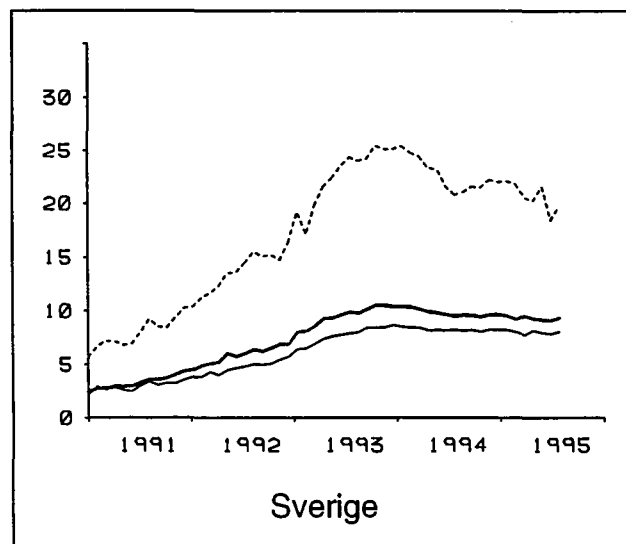
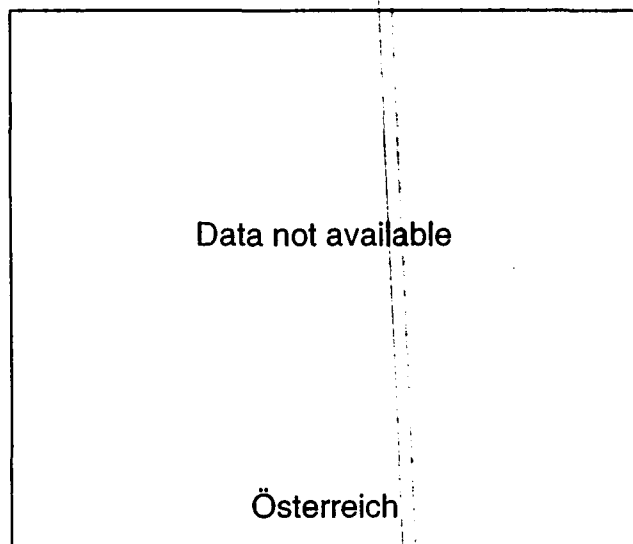
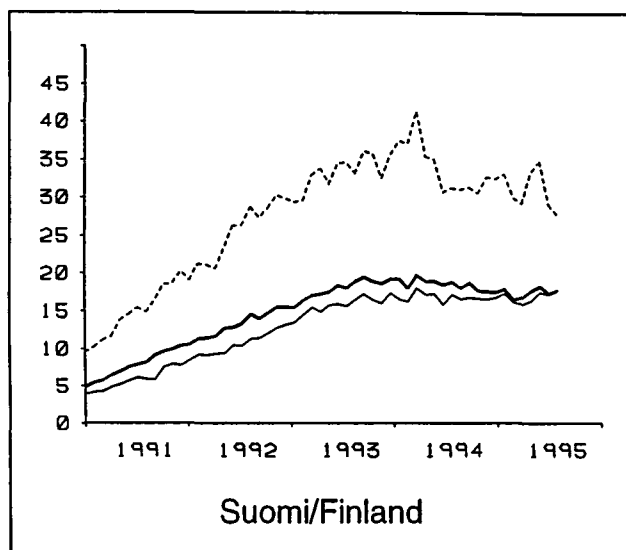
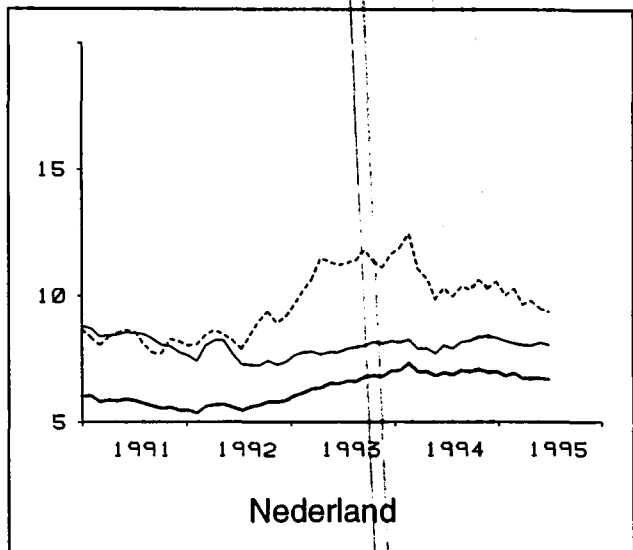
— Females



Unemployment rates, seasonally adjusted (%)



Unemployment rates, seasonally adjusted (%)



— Total

- - - Under 25 years

— Females

9 Unemployment rates, seasonally adjusted

(%)

	EUR 15	Belgique/ België	Danmark	Deutschland	Ελλάδα	España	France	Ireland	Italia	Luxembourg	Nederland	Österreich	Portugal	Suomi/ Finland	Sverige	United Kingdom	USA	Japan
Total Males and females																		
1993.07	10.9	9.0	10.5	8.0	8.6	23.3	11.8	15.7	10.4	2.8	6.6	:	5.8	18.0	9.9	10.4	6.8	2.5
1994.07	11.2	10.0	8.3	8.5	:	24.1	12.5	15.6	11.5	3.5	6.9	:	7.0	18.7	9.5	9.7	6.1	2.9
1995.03	10.9	10.1	7.0	8.1	:	22.9	12.2	15.3	12.0	3.9	6.7	:	7.7	16.7	9.5	8.7	5.5	3.0
1995.04	10.9	10.2	6.9	8.2	:	22.7	12.2	15.4	12.1	3.9	6.8	:	7.9	17.6	9.2	8.6	5.7	3.1
1995.05	10.9	10.2	6.8	8.2	:	22.8	12.1	15.4	11.9	3.9	6.8	:	7.7	18.2	9.1	8.7	5.6	3.1
1995.06	10.7	10.1	6.8	8.2	:	22.1	11.9	15.6	11.7	3.9	6.7	:	7.6	17.3	9.1	8.8	5.6	:
1995.07	10.7	10.1	:	8.2	:	22.1	11.8	15.4	11.3	3.9	:	:	7.7	17.7	9.3	8.8	:	:
Males																		
1993.07	9.8	7.0	10.0	6.7	5.7	19.6	10.1	15.6	7.8	2.4	5.8	:	4.8	20.2	11.7	12.3	7.2	2.4
1994.07	10.1	8.0	7.5	7.2	:	19.6	10.6	15.4	8.9	3.0	6.2	:	6.2	20.2	10.7	11.5	6.3	2.9
1995.03	9.6	8.0	6.1	7.0	:	17.9	10.3	14.9	9.4	3.2	5.8	:	6.7	17.6	11.1	10.3	5.4	3.0
1995.04	9.6	8.1	6.0	7.1	:	17.8	10.2	15.0	9.6	3.2	5.8	:	6.9	18.8	10.3	10.2	5.6	3.1
1995.05	9.6	8.1	5.9	7.1	:	17.8	10.2	15.0	9.5	3.1	5.7	:	6.8	18.9	10.3	10.2	5.7	3.1
1995.06	9.5	8.0	5.9	7.2	:	17.2	9.9	15.1	9.1	3.2	5.7	:	6.7	17.5	10.3	10.4	5.5	:
1995.07	9.4	8.0	:	7.2	:	17.1	9.9	15.0	8.7	3.1	:	:	6.8	17.7	10.5	10.4	:	:
Females																		
1993.07	12.3	11.8	11.1	9.7	13.6	29.7	13.8	16.0	14.9	3.4	7.9	:	6.9	15.6	7.9	8.1	6.4	2.7
1994.07	12.8	13.0	9.3	10.1	:	31.6	14.7	16.0	15.8	4.3	7.9	:	8.0	17.1	8.2	7.4	5.9	3.0
1995.03	12.5	13.1	8.0	9.6	:	30.8	14.6	16.1	16.3	5.0	8.1	:	8.8	15.8	7.7	6.7	5.6	3.1
1995.04	12.5	13.2	7.9	9.6	:	30.6	14.5	16.2	16.2	4.9	8.1	:	9.1	16.2	8.1	6.7	5.8	3.2
1995.05	12.5	13.1	7.8	9.6	:	30.9	14.5	16.2	16.1	5.2	8.2	:	8.9	17.4	7.9	6.7	5.6	3.2
1995.06	12.4	13.1	7.8	9.6	:	30.0	14.3	16.4	15.9	5.2	8.1	:	8.7	17.1	7.8	6.7	5.6	:
1995.07	12.4	13.2	:	9.6	:	30.0	14.2	16.2	15.6	5.2	:	:	8.9	17.6	8.0	6.7	:	:
Under 25 years Males and females																		
1993.07	21.5	22.0	14.2	8.1	26.8	44.6	27.3	24.9	31.1	5.6	11.3	:	13.3	34.6	24.3	17.8	13.2	4.9
1994.07	21.7	23.7	10.8	8.7	:	44.9	29.1	24.5	31.9	7.7	10.0	:	14.6	31.2	20.8	17.4	12.6	5.5
1995.03	21.1	23.8	8.8	7.9	:	42.5	27.9	24.1	33.6	8.0	9.7	:	17.2	29.2	20.5	15.8	11.7	5.7
1995.04	21.0	24.1	8.6	7.9	:	41.8	27.5	24.4	33.4	7.9	9.8	:	17.7	33.3	20.2	15.6	11.8	6.1
1995.05	21.1	23.9	8.5	7.8	:	42.2	27.4	24.1	33.1	8.1	9.5	:	17.5	34.8	21.5	15.9	11.8	5.6
1995.06	20.4	23.6	8.4	8.0	:	40.1	26.6	24.0	32.1	8.5	9.4	:	17.3	29.1	18.4	16.2	11.7	:
1995.07	20.1	23.5	:	8.0	:	39.9	26.1	23.4	30.6	8.1	:	:	17.8	27.6	19.7	16.6	:	:

Unemployment rates, seasonally adjusted

(%)

	EUR 15	Belgique/ België	Danmark	Deutschland	Ελλάδα	España	France	Ireland	Italia	Luxembourg	Nederland	Österreich	Portugal	Suomi/ Finland	Sverige	United Kingdom	USA	Japan
Under 25 years																		
Males																		
1993.07	21.1	21.1	13.9	8.0	18.9	41.4	25.2	26.9	27.1	5.2	12.6	:	11.1	39.0	28.9	20.8	14.3	4.8
1994.07	21.1	22.2	10.8	8.8	:	40.4	26.5	26.6	28.6	8.5	10.8	:	13.2	32.8	22.2	20.3	13.5	5.6
1995.03	20.3	22.3	8.6	8.1	:	36.9	25.1	25.7	30.7	7.9	10.2	:	16.2	29.5	23.0	18.2	11.7	5.7
1995.04	20.1	22.6	8.3	8.2	:	36.1	24.7	26.0	30.4	7.8	10.7	:	16.4	37.1	22.2	18.0	11.9	6.0
1995.05	20.2	22.5	8.3	8.1	:	36.5	24.8	25.7	29.8	7.7	10.5	:	16.3	36.4	24.9	18.3	12.1	5.5
1995.06	19.5	22.2	8.3	8.2	:	34.3	23.7	25.6	29.0	8.6	10.0	:	16.1	30.6	19.8	18.8	12.0	:
1995.07	19.3	22.0	:	8.3	:	34.1	23.3	25.3	27.6	7.9	:	:	16.6	27.4	21.5	19.1	:	:
Females																		
1993.07	21.9	23.1	14.6	8.3	36.1	48.7	29.5	22.6	36.2	6.0	10.0	:	15.8	29.7	19.5	14.2	11.9	5.1
1994.07	22.4	25.5	10.9	8.5	:	50.4	31.8	22.1	35.9	6.9	9.2	:	16.4	29.3	19.3	14.0	11.5	5.4
1995.03	22.0	25.6	9.0	7.7	:	49.1	30.7	22.2	37.2	8.1	9.1	:	18.4	28.8	17.9	12.8	11.8	5.8
1995.04	21.9	25.9	8.8	7.6	:	48.6	30.4	22.5	37.1	8.0	8.9	:	19.2	28.9	18.1	12.7	11.7	6.3
1995.05	22.0	25.5	8.7	7.5	:	48.9	30.1	22.3	37.3	8.5	8.4	:	18.8	33.0	18.1	13.1	11.5	5.7
1995.06	21.3	25.3	8.6	7.7	:	46.8	29.7	22.1	35.9	8.5	8.8	:	18.8	27.5	16.8	13.1	11.3	:
1995.07	21.1	25.3	:	7.7	:	46.7	29.1	21.2	34.5	8.4	:	:	19.1	28.0	17.7	13.5	:	:
25 years and over																		
Males																		
1993.07	8.0	5.4	9.2	6.5	4.0	15.3	8.2	13.2	4.9	2.1	4.5	:	3.7	17.8	9.2	10.5	5.9	2.1
1994.07	8.4	6.3	6.8	7.0	:	15.7	8.8	13.0	6.1	2.3	5.4	:	5.0	18.6	9.1	9.7	4.9	2.5
1995.03	8.0	6.3	5.6	6.9	:	14.5	8.6	12.6	6.2	2.6	5.0	:	5.1	16.2	9.5	8.7	4.1	2.6
1995.04	8.1	6.4	5.5	7.0	:	14.5	8.6	12.7	6.5	2.7	5.0	:	5.3	16.5	8.7	8.7	4.4	2.7
1995.05	8.0	6.4	5.4	7.0	:	14.4	8.6	12.7	6.5	2.6	4.9	:	5.2	16.7	8.4	8.6	4.5	2.7
1995.06	8.0	6.4	5.4	7.0	:	14.2	8.4	12.9	6.2	2.6	5.0	:	5.1	15.9	8.9	8.7	4.3	:
1995.07	7.9	6.4	:	7.0	:	14.2	8.4	12.9	6.0	2.5	:	:	5.1	16.6	8.9	8.7	:	:
Females																		
1993.07	10.4	10.1	10.3	10.0	9.3	24.2	11.6	13.8	10.2	2.9	7.4	:	5.2	13.8	6.1	6.7	5.3	2.2
1994.07	11.0	11.1	8.9	10.3	:	26.5	12.4	13.9	11.7	3.8	7.6	:	6.4	15.6	6.6	6.0	4.8	2.5
1995.03	10.8	11.3	7.8	9.9	:	26.0	12.4	14.0	11.8	4.4	7.8	:	7.1	14.4	6.3	5.5	4.3	2.5
1995.04	10.8	11.3	7.7	9.9	:	25.8	12.4	14.1	11.8	4.3	7.8	:	7.3	14.8	6.7	5.5	4.7	2.7
1995.05	10.8	11.3	7.6	9.9	:	26.1	12.4	14.1	11.6	4.5	8.1	:	7.1	15.4	6.5	5.4	4.4	2.7
1995.06	10.7	11.4	7.6	10.0	:	25.7	12.3	14.4	11.7	4.5	7.9	:	7.0	15.8	6.6	5.4	4.5	:
1995.07	10.7	11.4	:	9.9	:	25.8	12.3	14.5	11.7	4.6	:	:	7.0	16.4	6.6	5.3	:	:

∞ Unemployment rates, not seasonally adjusted

(%)

	EUR 15	Belgique/ België	Danmark	Deutschland	Ελλάδα	España	France	Ireland	Italia	Luxembourg	Nederland	Österreich	Portugal	Suomi/ Finland	Sverige	United Kingdom	USA	Japan
Total Males and females																		
1993.07	10.7	9.2	9.8	8.0	8.6	22.9	11.4	15.9	10.0	2.5	6.6	:	5.6	17.5	10.3	10.6	6.9	2.4
1994.07	11.1	10.3	7.8	8.5	:	23.7	12.0	15.8	11.0	3.1	6.8	:	6.8	18.3	9.8	9.9	6.2	2.8
1995.03	11.0	9.9	7.5	8.4	:	23.3	12.2	15.4	12.3	4.0	6.9	:	7.7	17.0	9.3	8.7	5.7	3.3
1995.04	10.8	9.7	7.1	8.2	:	22.7	11.9	15.4	12.3	3.8	6.7	:	7.7	18.1	9.1	8.6	5.6	3.2
1995.05	10.6	9.5	6.6	7.9	:	22.4	11.7	15.1	12.0	3.6	6.5	:	7.6	17.5	8.5	8.4	5.5	3.1
1995.06	10.5	9.5	6.5	7.9	:	22.2	11.2	15.4	11.4	3.5	6.5	:	7.5	16.9	9.4	8.7	5.8	:
1995.07	10.6	10.4	:	8.2	:	21.7	11.4	15.6	11.0	3.5	:	:	7.6	17.3	9.6	9.1	:	:
Males																		
1993.07	9.6	7.1	9.1	6.6	5.7	19.1	9.6	15.5	7.5	2.2	5.7	:	4.7	18.9	12.2	12.4	6.9	2.3
1994.07	9.9	8.1	6.9	7.1	:	19.2	10.0	15.3	8.5	2.6	6.1	:	6.1	18.8	11.0	11.6	6.1	2.8
1995.03	9.9	7.8	6.8	7.4	:	18.3	10.4	15.1	9.7	3.3	6.0	:	6.8	18.5	11.0	10.3	5.9	3.3
1995.04	9.7	7.7	6.4	7.2	:	17.8	10.1	15.1	9.7	3.1	5.8	:	6.8	19.6	10.1	10.2	5.7	3.1
1995.05	9.4	7.5	5.8	6.9	:	17.5	9.8	14.7	9.5	2.9	5.5	:	6.7	18.2	9.8	10.0	5.6	3.0
1995.06	9.2	7.4	5.5	6.8	:	17.2	9.3	14.9	8.8	2.8	5.6	:	6.7	16.1	10.4	10.4	5.5	:
1995.07	9.3	8.1	:	7.0	:	16.8	9.3	15.0	8.5	2.7	:	:	6.8	16.5	10.8	10.7	:	:
Females																		
1993.07	12.3	12.2	10.7	9.9	13.6	29.3	13.6	16.6	14.4	3.2	7.9	:	6.7	16.0	8.2	8.3	6.9	2.5
1994.07	12.7	13.4	9.0	10.3	:	31.2	14.4	16.6	15.2	3.9	7.9	:	7.7	17.6	8.5	7.7	6.4	2.8
1995.03	12.6	12.7	8.2	9.7	:	31.4	14.4	16.0	16.6	5.2	8.2	:	8.8	15.4	7.4	6.6	5.4	3.5
1995.04	12.5	12.6	7.9	9.6	:	30.5	14.2	16.0	16.6	4.9	8.0	:	8.8	16.4	8.0	6.6	5.5	3.3
1995.05	12.2	12.4	7.6	9.3	:	30.3	13.9	15.7	16.1	4.8	7.9	:	8.6	16.7	7.2	6.4	5.3	3.2
1995.06	12.2	12.5	7.6	9.4	:	30.2	13.6	16.3	15.8	4.8	7.7	:	8.6	17.7	8.3	6.4	6.1	:
1995.07	12.3	13.6	:	9.8	:	29.6	13.9	16.7	15.4	4.7	:	:	8.6	18.1	8.4	7.0	:	:
Under 25 years Males and females																		
1993.07	21.4	23.4	13.2	8.5	26.8	43.9	25.5	25.8	30.3	4.7	11.9	:	12.7	30.9	21.6	19.4	13.2	4.8
1994.07	21.6	25.0	10.1	9.1	:	44.1	27.3	25.3	30.9	6.3	10.5	:	13.9	28.4	17.9	19.1	12.7	5.5
1995.03	21.0	22.2	9.4	8.2	:	43.2	26.5	24.0	33.6	8.4	9.7	:	17.6	29.1	21.5	15.4	11.8	7.4
1995.04	20.5	21.3	8.8	7.8	:	41.7	25.3	24.1	33.6	7.4	9.3	:	17.5	35.8	20.4	15.0	11.6	6.7
1995.05	20.1	20.2	8.0	7.2	:	41.1	24.5	23.2	33.4	7.0	9.0	:	17.3	32.7	19.7	14.9	12.3	5.7
1995.06	20.0	20.0	7.6	7.5	:	40.8	23.6	23.9	32.0	6.8	9.1	:	17.3	27.3	18.7	16.9	13.2	:
1995.07	20.3	24.8	:	8.5	:	39.6	24.4	24.0	30.8	6.6	:	:	17.6	25.4	17.3	18.6	:	:

Unemployment rates, not seasonally adjusted

(%)

	EUR 15	Belgique/ België	Danmark	Deutschland	Ελλάδα	España	France	Ireland	Italia	Luxembourg	Nederland	Österreich	Portugal	Suomi/ Finland	Sverige	United Kingdom	USA	Japan
Under 25 years																		
Males																		
1993.07	20.9	22.1	12.7	8.2	18.9	40.4	22.9	27.2	26.5	4.1	13.2	:	10.7	33.8	26.5	22.3	13.6	4.5
1994.07	20.9	23.1	9.9	9.1	:	39.4	24.1	26.8	27.7	6.8	11.2	:	12.6	28.0	19.9	21.8	13.1	5.6
1995.03	20.4	20.8	9.5	8.8	:	37.7	24.3	25.9	30.7	8.8	10.8	:	16.5	32.8	25.1	18.0	12.5	7.4
1995.04	19.8	19.9	8.8	8.3	:	36.1	22.8	25.9	30.5	7.5	10.5	:	16.5	38.9	22.2	17.6	11.9	6.6
1995.05	19.3	18.8	7.8	7.6	:	35.5	22.1	24.8	30.1	7.0	10.1	:	16.3	34.5	22.6	17.5	12.6	5.4
1995.06	19.3	18.4	7.4	7.7	:	35.0	20.5	25.3	29.2	6.7	9.5	:	16.3	27.9	20.3	19.8	13.0	:
1995.07	19.3	22.8	:	8.6	:	33.6	21.1	25.4	27.8	6.2	:	:	16.7	22.9	19.2	21.1	:	:
Females																		
1993.07	22.0	24.8	13.8	8.9	36.1	48.1	28.3	24.0	35.2	5.2	10.6	:	15.1	27.9	16.7	15.9	12.8	5.1
1994.07	22.4	27.2	10.3	9.2	:	49.8	30.5	23.5	34.9	5.8	9.7	:	15.5	28.8	15.8	15.7	12.3	5.4
1995.03	21.6	23.7	9.2	7.6	:	49.7	28.8	21.8	37.4	8.0	8.6	:	18.8	24.9	17.5	12.2	11.1	7.5
1995.04	21.3	22.9	8.7	7.3	:	48.3	27.8	21.8	37.6	7.2	8.2	:	18.8	32.3	18.5	11.8	11.2	6.8
1995.05	20.9	21.8	8.1	6.9	:	47.8	27.0	21.4	37.5	7.0	8.0	:	18.5	30.7	16.6	11.8	11.9	6.1
1995.06	20.9	21.9	7.8	7.3	:	47.6	26.8	22.1	35.5	7.0	8.6	:	18.5	26.6	16.8	13.3	13.4	:
1995.07	21.4	27.0	:	8.3	:	46.6	27.8	22.4	34.6	7.0	:	:	18.8	28.1	15.4	15.6	:	:
25 years and over																		
Males																		
1993.07	7.8	5.4	8.3	6.4	4.0	15.0	8.0	13.0	4.6	1.9	4.4	:	3.6	16.3	9.7	10.2	5.5	2.0
1994.07	8.1	6.3	6.2	6.9	:	15.4	8.5	12.9	5.7	2.1	5.2	:	4.9	17.3	9.5	9.5	4.6	2.4
1995.03	8.3	6.4	6.3	7.2	:	14.8	8.9	12.9	6.6	2.7	5.2	:	5.2	17.1	9.3	8.8	4.7	2.7
1995.04	8.1	6.3	5.9	7.1	:	14.6	8.7	12.8	6.6	2.5	5.0	:	5.2	17.5	8.6	8.8	4.5	2.7
1995.05	7.9	6.2	5.3	6.8	:	14.3	8.5	12.6	6.5	2.4	4.7	:	5.2	16.2	8.1	8.5	4.2	2.7
1995.06	7.7	6.2	5.1	6.7	:	14.1	8.1	12.7	5.8	2.3	4.9	:	5.1	14.1	8.8	8.6	4.0	:
1995.07	7.7	6.4	:	6.8	:	13.9	8.1	12.8	5.7	2.3	:	:	5.1	15.4	9.3	8.6	:	:
Females																		
1993.07	10.3	10.3	10.0	10.1	9.3	23.9	11.4	14.0	9.9	2.7	7.2	:	5.0	13.9	6.6	6.5	5.6	2.0
1994.07	10.9	11.3	8.7	10.4	:	26.1	12.3	14.2	11.2	3.5	7.4	:	6.2	15.7	7.2	5.8	5.0	2.3
1995.03	10.9	11.2	8.0	10.0	:	26.6	12.6	14.0	12.3	4.6	8.1	:	7.1	14.5	6.2	5.4	4.3	2.7
1995.04	10.8	11.2	7.7	9.9	:	26.0	12.4	14.0	12.2	4.4	8.0	:	7.1	14.8	6.5	5.5	4.4	2.6
1995.05	10.6	11.1	7.5	9.7	:	25.9	12.2	13.7	11.6	4.3	7.9	:	6.9	15.0	5.9	5.3	4.0	2.7
1995.06	10.6	11.2	7.5	9.7	:	25.8	11.9	14.4	11.8	4.4	7.5	:	6.8	16.1	6.9	5.0	4.5	:
1995.07	10.7	11.6	:	10.0	:	25.3	12.1	14.8	11.5	4.3	:	:	6.8	16.4	7.2	5.2	:	:

10 Unemployment rates, annual averages

(%)

	EUR 15	Belgique/ België	Danmark	Deutschland	Ελλάδα	España	France	Ireland	Italia	Luxembourg	Nederland	Österreich	Portugal	Suomi/ Finland	Sverige	United Kingdom	USA	Japan
Total Males and females																		
1988	:	8.9	6.1	:	6.8	19.5	:	16.1	10.0	2.0	7.5	:	5.5	4.5	1.9	8.7	5.5	2.3
1989	:	7.5	7.3	:	6.7	17.2	:	14.7	9.9	1.8	6.9	:	4.9	3.5	1.6	7.3	5.3	2.3
1990	:	6.7	7.7	:	6.4	16.2	:	13.4	9.1	1.7	6.2	:	4.6	3.4	1.8	7.0	5.5	2.1
1991	8.2	6.6	8.4	5.6	7.0	16.4	9.5	14.8	8.8	1.7	5.8	:	4.0	7.6	3.3	8.8	6.7	2.1
1992	9.3	7.3	9.2	6.6	7.9	18.5	10.4	15.4	9.0	2.1	5.6	:	4.2	13.1	5.8	10.1	7.4	2.2
1993	10.8	8.9	10.1	7.9	8.6	22.8	11.7	15.8	10.3	2.7	6.6	:	5.7	17.9	9.5	10.4	6.8	2.5
1994	11.2	10.0	8.2	8.4	8.9	24.1	12.5	15.7	11.4	3.5	7.0	:	7.0	18.4	9.8	9.6	6.1	2.9
Males																		
1988	:	5.8	5.3	:	4.3	15.2	:	15.6	7.1	1.5	5.5	:	4.0	5.1	1.9	8.9	5.5	2.5
1989	:	4.7	6.6	:	4.1	12.9	:	14.2	7.0	1.3	4.9	:	3.5	3.6	1.6	7.4	5.2	2.2
1990	:	4.1	7.0	:	3.9	11.9	:	12.8	6.4	1.2	4.3	:	3.2	4.0	1.8	7.4	5.6	2.0
1991	7.0	4.3	7.5	4.6	4.4	12.3	7.4	14.2	6.2	1.3	4.1	:	2.8	9.3	3.6	9.9	7.0	2.0
1992	8.1	5.3	8.3	5.2	5.0	14.5	8.3	15.1	6.5	1.7	4.3	:	3.6	15.5	6.9	11.9	7.8	2.1
1993	9.7	6.9	9.5	6.6	5.7	19.1	10.0	15.6	7.8	2.2	5.6	:	4.8	19.8	11.1	12.3	7.1	2.4
1994	10.1	8.0	7.4	7.2	6.0	19.7	10.6	15.4	8.9	3.0	6.3	:	6.1	19.9	11.2	11.3	6.2	2.8
Females																		
1988	:	13.8	7.1	:	11.2	27.7	:	17.3	15.3	2.9	10.9	:	7.6	4.0	1.9	8.4	5.6	2.1
1989	:	11.9	8.1	:	11.1	25.3	:	15.5	15.2	2.7	10.2	:	6.9	3.3	1.7	7.1	5.4	2.3
1990	:	10.6	8.4	:	10.8	24.1	:	14.6	13.8	2.5	9.1	:	6.2	2.8	1.8	6.6	5.4	2.2
1991	10.0	10.0	9.5	7.0	11.8	23.9	12.1	15.9	13.2	2.3	8.4	:	5.4	5.7	2.9	7.4	6.3	2.2
1992	10.9	10.2	10.1	8.5	13.0	25.6	13.0	16.0	13.3	2.8	7.6	:	5.0	10.5	4.7	7.8	6.9	2.2
1993	12.2	11.8	10.8	9.6	13.6	29.3	13.8	16.2	14.8	3.4	7.9	:	6.8	15.7	7.7	8.1	6.5	2.6
1994	12.8	13.0	9.1	10.1	13.7	31.4	14.6	16.2	15.8	4.4	8.2	:	8.0	16.7	8.2	7.5	6.0	3.0
Under 25 years Males and females																		
1988	:	18.1	8.8	:	23.5	39.9	:	23.4	30.5	4.7	10.7	:	12.4	8.4	4.2	12.8	11.0	4.9
1989	:	16.2	11.1	:	22.5	34.2	:	20.3	29.8	4.2	9.8	:	11.1	6.5	3.9	10.4	10.9	4.5
1990	:	15.3	11.3	:	21.5	32.3	:	19.4	27.9	3.8	8.6	:	10.0	6.7	4.5	10.8	11.1	4.3
1991	16.1	14.9	11.6	5.9	22.9	31.1	21.5	22.4	26.5	3.2	8.3	:	8.8	14.5	7.8	14.3	13.4	4.4
1992	18.0	16.2	12.7	6.4	25.1	34.6	23.3	24.4	27.9	4.0	8.5	:	10.1	25.2	13.6	16.7	14.2	4.5
1993	21.2	21.8	13.7	7.9	26.8	43.4	27.3	25.6	30.6	5.4	11.1	:	12.9	33.3	22.6	17.9	13.3	5.1
1994	21.8	24.1	10.7	8.6	27.7	45.0	29.1	25.3	32.2	7.7	10.7	:	15.2	33.6	22.6	17.0	12.5	5.5

Unemployment rates, annual averages

(%)

	EUR 15	Belgique/ België	Danmark	Deutschland	Ελλάδα	España	France	Ireland	Italia	Luxembourg	Nederland	Österreich	Portugal	Suomi/ Finland	Sverige	United Kingdom	USA	Japan
Under 25 years																		
Males																		
1988	:	13.1	8.4	:	15.7	33.5	:	25.0	25.9	4.4	9.7	:	9.7	9.1	4.1	13.7	11.4	5.0
1989	:	11.8	10.7	:	15.4	27.6	:	21.8	25.1	3.5	8.2	:	9.0	6.6	3.9	11.2	11.4	4.8
1990	:	11.0	11.2	:	14.4	26.2	:	20.4	23.7	3.2	7.5	:	8.4	8.1	4.6	11.9	11.6	4.5
1991	15.0	11.9	11.0	5.4	16.0	25.7	18.1	23.7	23.0	3.3	7.4	:	6.8	17.7	8.5	16.6	14.3	4.7
1992	17.2	14.3	12.2	5.8	17.4	29.9	20.1	25.8	24.3	4.2	8.5	:	9.1	29.2	15.9	19.7	15.3	4.7
1993	20.7	20.7	13.4	7.8	18.9	40.0	25.1	27.4	26.8	5.2	12.0	:	10.8	36.9	26.0	21.0	14.3	4.9
1994	21.3	22.6	10.6	8.7	19.7	40.9	26.7	27.1	28.9	8.0	11.9	:	13.6	36.9	25.3	19.7	13.2	5.7
Females																		
1988	:	23.5	9.4	:	32.5	47.6	:	21.4	36.0	5.1	11.7	:	15.7	7.6	4.4	11.7	10.6	4.7
1989	:	21.2	11.6	:	30.9	42.3	:	18.6	35.4	5.0	11.4	:	13.6	6.3	3.8	9.4	10.4	4.3
1990	:	19.9	11.5	:	29.9	39.7	:	18.2	33.0	4.6	9.6	:	11.9	5.2	4.5	9.6	10.6	4.1
1991	17.4	18.0	12.2	6.3	31.3	37.9	25.0	20.9	30.9	3.1	9.1	:	11.1	11.1	7.1	11.6	12.4	4.2
1992	19.0	18.2	13.2	7.0	34.3	40.6	26.8	22.8	32.6	3.7	8.6	:	11.2	20.9	11.1	13.0	13.0	4.2
1993	21.7	23.0	14.1	8.1	36.1	47.6	29.7	23.5	35.3	5.6	10.1	:	15.3	29.2	19.0	14.2	12.2	5.2
1994	22.4	25.8	10.8	8.4	36.9	50.1	31.7	23.2	36.5	7.3	9.5	:	17.0	29.9	19.8	13.7	11.6	5.4
25 years and over																		
Males																		
1988	:	4.8	4.5	:	2.9	11.0	:	13.3	3.8	1.0	4.6	:	2.6	4.4	1.5	7.6	4.2	2.2
1989	:	3.8	5.7	:	2.6	9.8	:	12.5	4.0	1.0	4.2	:	2.2	3.1	1.2	6.5	3.9	1.9
1990	:	3.3	6.0	:	2.6	9.0	:	11.1	3.6	1.0	3.7	:	2.1	3.4	1.3	6.3	4.4	1.7
1991	5.5	3.5	6.7	4.5	2.9	9.6	6.0	12.1	3.4	1.0	3.4	:	2.0	8.1	2.7	8.4	5.7	1.7
1992	6.5	4.2	7.5	5.1	3.4	11.4	6.8	12.8	3.7	1.4	3.5	:	2.6	13.6	5.5	10.1	6.4	1.8
1993	7.9	5.3	8.8	6.4	4.0	15.0	8.2	13.0	4.9	1.9	4.5	:	3.7	17.7	9.0	10.5	5.8	2.1
1994	8.3	6.3	6.7	7.0	4.3	15.7	8.8	12.9	6.0	2.4	5.3	:	4.8	17.9	9.3	9.6	4.8	2.5
Females																		
1988	:	11.7	6.4	:	7.0	19.3	:	15.4	9.5	2.2	10.6	:	5.3	3.3	1.4	7.4	4.3	1.6
1989	:	10.1	7.2	:	7.1	19.1	:	14.1	9.8	2.1	9.8	:	5.1	2.8	1.2	6.3	4.2	2.0
1990	:	8.9	7.7	:	6.8	18.7	:	13.1	9.1	2.0	8.9	:	4.8	2.4	1.3	5.8	4.3	1.8
1991	8.3	8.6	8.8	7.1	7.8	19.3	10.0	13.9	8.8	2.1	8.1	:	4.2	4.9	2.1	6.3	5.1	1.8
1992	9.2	8.9	9.4	8.8	8.8	21.1	10.8	13.6	8.9	2.6	7.3	:	3.6	9.1	3.6	6.5	5.7	1.9
1993	10.3	10.0	10.0	9.9	9.3	24.1	11.5	13.7	10.3	2.9	7.3	:	5.2	13.9	6.0	6.6	5.4	2.2
1994	10.9	11.1	8.7	10.3	9.4	26.3	12.3	13.8	11.5	3.8	7.8	:	6.3	15.1	6.6	6.1	4.9	2.5

Number of unemployed, annual averages

1000

	EUR 15	Belgique/ België	Danmark	Deutschland	Ελλάδα	España	France	Ireland	Italia	Luxembourg	Nederland	Österreich	Portugal	Suomi/ Finland	Sverige	United Kingdom	USA	Japan
Total Males and females																		
1988	:	341.9	172.9	:	268.6	2848.4	:	210.1	2332.3	3.1	483.4	:	251.7	115.6	84.4	2451.5	6700.7	1382.5
1989	:	290.5	208.4	:	262.3	2544.5	:	189.5	2313.8	2.9	451.4	:	228.1	88.9	73.7	2081.9	6519.8	1418.6
1990	:	260.6	220.6	:	254.7	2435.5	:	175.7	2126.4	2.7	413.2	:	213.2	88.0	82.7	2022.4	6873.7	1343.3
1991	13623.1	263.0	242.5	2195.2	276.3	2476.7	2321.7	197.5	2067.0	2.8	395.1	:	190.9	193.0	148.1	2528.4	8426.1	1359.2
1992	15343.6	295.4	264.7	2580.0	317.5	2810.0	2557.6	209.5	2099.7	3.6	394.4	:	199.3	328.2	260.4	2891.1	9384.3	1422.5
1993	17804.8	365.5	288.5	3090.3	351.5	3502.6	2908.8	216.7	2344.5	4.5	467.1	:	270.3	443.7	414.9	2979.0	8733.8	1656.7
1994	18553.1	418.6	225.5	3303.3	367.3	3726.3	3092.5	215.2	2580.4	6.0	507.5	:	332.4	455.8	426.2	2741.4	7996.5	1920.8
Males																		
1988	:	137.4	80.8	:	108.0	1463.4	:	136.1	1063.2	1.5	216.3	:	104.1	67.5	43.8	1439.3	3654.6	911.7
1989	:	111.3	102.2	:	102.1	1250.5	:	122.7	1046.0	1.4	194.9	:	91.6	48.1	37.6	1214.3	3517.1	828.3
1990	:	97.8	108.3	:	98.7	1162.0	:	111.3	955.3	1.3	176.2	:	85.7	54.0	43.2	1206.4	3799.0	773.3
1991	6765.0	104.0	115.3	1031.2	110.7	1197.3	1007.1	124.4	934.4	1.4	168.3	:	75.4	124.1	84.8	1615.6	4817.3	771.7
1992	7817.7	126.6	127.3	1163.0	126.9	1402.7	1132.6	131.8	964.5	1.8	179.7	:	95.0	203.4	160.7	1927.6	5379.7	820.0
1993	9346.1	166.4	144.6	1481.7	146.2	1849.1	1364.7	135.3	1115.2	2.4	237.9	:	125.8	259.4	253.9	1976.5	4932.4	947.5
1994	9659.0	195.2	109.2	1619.5	156.1	1899.8	1443.3	133.9	1261.0	3.2	265.6	:	160.4	259.4	254.7	1812.9	4367.7	1123.3
Females																		
1988	:	204.6	92.1	:	160.6	1385.0	:	74.0	1269.1	1.6	267.1	:	147.6	48.1	40.6	1012.2	3046.1	470.8
1989	:	179.2	106.2	:	160.2	1293.9	:	66.7	1267.8	1.5	256.4	:	136.5	40.7	36.1	867.7	3002.8	590.3
1990	:	162.8	112.3	:	156.0	1273.5	:	64.4	1171.1	1.4	237.1	:	127.5	34.0	39.6	816.0	3074.7	570.0
1991	6858.2	159.0	127.2	1164.1	165.6	1279.3	1314.6	73.1	1132.6	1.4	226.8	:	115.5	68.9	63.3	912.8	3608.8	587.5
1992	7525.8	168.8	137.4	1417.0	190.5	1407.4	1425.0	77.8	1135.3	1.7	214.6	:	104.3	124.8	99.7	963.5	4004.7	602.5
1993	8458.7	199.1	143.9	1608.6	205.3	1653.4	1544.1	81.5	1229.3	2.1	229.2	:	144.5	184.4	161.0	1002.5	3801.3	709.2
1994	8894.1	223.3	116.2	1683.7	211.2	1826.5	1649.2	81.3	1319.4	2.8	241.9	:	172.0	196.3	171.5	928.5	3628.8	797.5
Under 25 years Males and females																		
1988	:	98.8	52.1	:	119.5	1307.4	:	72.0	1227.9	1.4	140.5	:	117.0	30.9	31.0	795.8	2486.8	381.7
1989	:	83.4	63.6	:	119.2	1053.4	:	60.2	1158.6	1.1	128.5	:	101.8	23.7	28.9	639.1	2411.0	365.8
1990	:	75.7	62.8	:	115.5	976.4	:	57.0	1047.8	0.9	113.8	:	90.7	24.1	33.1	637.3	2369.6	361.7
1991	4407.6	73.4	62.8	349.4	121.5	921.0	678.6	66.0	1022.7	0.8	109.3	:	73.8	47.8	53.8	799.6	2766.6	385.8
1992	4699.0	78.7	65.3	353.5	132.5	999.9	709.1	69.3	1016.2	1.0	113.0	:	80.2	75.3	84.2	892.2	2898.8	399.2
1993	5271.6	102.5	68.3	414.5	142.4	1231.5	797.2	72.0	1036.4	1.2	143.9	:	97.7	93.4	125.2	911.4	2717.0	455.0
1994	5213.9	114.3	52.0	425.7	143.5	1243.5	802.9	70.9	1044.5	1.7	134.8	:	112.2	87.7	120.6	825.9	2692.6	499.2

Methodological notes

1. The Eurostat unemployment rates are calculated according to the recommendations of the 13th International Conference of Labour Statisticians organised by the International Labour Office (ILO) in 1982. Unemployed persons are those persons aged 15 years and over who
 - are without work
 - are available to start work within the next two weeks
 - and have actively sought employment at some time during the previous four weeks.
2. The unemployment estimates are based on the results of the European Community Labour Force Survey. It is carried out in the spring of each year. The use of the same definitions and concepts throughout the EU ensures comparability of the results between Member States.
3. The **unemployment rate** is the number of unemployed as a percentage of the labour force (people living in collective households are excluded). The labour force is the total of the employed and the unemployed. Monthly estimates of the **number of unemployed** are derived by interpolating/extrapolating each year's Community Labour Force Survey results using the results of the national labour force surveys (see table A) and monthly indicators of unemployment (see table B). Monthly estimates of **employment** are obtained by
 - interpolating/extrapolating linearly the annual Community LFS results (Belgium, Denmark, Germany, Greece, France, Ireland, Luxembourg, Netherlands)
 - interpolating/extrapolating linearly the results of the national quarterly labour force surveys after adjustment to the Community LFS (Spain, Italy, Portugal, United Kingdom)
 - using the results of the national monthly labour force surveys (Finland, Sweden, USA, Japan).
4. Estimates are made separately for males under 25, females under 25, males aged 25 years and over, and females aged 25 years and over. Totals are obtained by adding up these four basic categories.
5. The figures for the four basic categories are seasonally adjusted using the multiplicative version of the X-11 method of the US Bureau of the Census. The reliability of the figures is adversely affected if deseasonalisation is performed on short series (such as Germany since the reunification) or where breaks occur (such as Sweden since 1993).
6. From 1992, in some member States, the more restrictive application of the ILO guidelines introduces a break in the series. In such cases, no estimates are provided for the period before 1992.

Table A: Reference period of the last surveys used

Country	Community labour force surveys	National labour force surveys
Belgium	1994Q2	-
Denmark	1994Q2	-
Germany	1994Q2	-
Greece	1994Q2	-
Spain	1994Q2	1995Q2
France	1994Q2	-
Ireland	1994Q2	-
Italy	1994Q2	1995Q1
Luxembourg	1994Q2	-
Netherlands	1994Q2	-
Austria	-	-
Portugal	1994Q2	1995Q1
Finland	-	1995JUL
Sweden	-	1995JUL
United Kingdom	1994Q2	1995Q1

NB: 1994Q2 = 2nd quarter of 1994

Table B: Monthly indicators of unemployment.

BELGIUM: All persons in the following categories registered at employment offices: wholly unemployed persons in receipt of benefit, other unemployed persons compulsory registered and voluntarily registered persons without work.

Series provided by the Office National de l'Emploi.

DENMARK: Persons seeking full-time or part-time employment, whether or not they are members of an unemployment insurance fund.

Series provided by Danmarks Statistik.

GERMANY: Unemployed persons registered at public employment offices and seeking work as employees for at least 18 hours per week.

Series provided by the Bundesanstalt für Arbeit.

GREECE: No monthly indicator

SPAIN: Unemployed persons registered at public employment offices and seeking work as employees for 20 hours or more per week.

Series provided by the Ministerio de Trabajo y Seguridad Social.

FRANCE: Unemployed persons registered at the Agence de l'Emploi and seeking permanent full-time employment (demandeurs de catégorie 1).

Series provided by the Ministère du Travail, de l'Emploi et de la Formation Professionnelle.

IRELAND: Claimants for unemployment benefit, applicants for unemployment assistance and others seeking work who are registered with the employment services of the Department of Social Welfare. Excluded are persons seeking part-time employment.

Series provided by the Central Statistics Office.

ITALY: Persons without work, persons seeking their first job, persons working part-time for less than 20 hours per week and workers on a fixed-term contract of not more than 4 months in any 12-month period, who are looking for a different job.

Series provided by the Ministero del Lavoro e della Previdenza Sociale.

LUXEMBURG: Unemployed persons registered at employment offices and seeking work as employees for at least 20 hours per week.

Series provided by the Administration de l'Emploi.

NETHERLANDS: Persons registered at employment offices, between the ages of 16 and 64 years,

- who are without work or with work less than 12 hours a week and
- who are immediately available for paid employment for at least 12 hours a week or who found a job and will start working for at least 12 hours a week.

Series provided by the CBS.

AUSTRIA: No monthly indicator.

PORTUGAL: Persons registered at employment offices who are available for work within 30 days after registration.

Series provided by the Instituto de Emprego e Formação Profissional.

FINLAND: Number of unemployed in the monthly labour force survey.

SWEDEN: Number of unemployed in the monthly labour force survey.

UNITED KINGDOM: Persons seeking full-time work and claiming unemployment benefit because they are out of work.

Series provided by the Department of Employment.

BELGIQUE / BELGIË

**Moniteur belge/
Belgisch Staatsblad**
Rue de Louvain 42/Leuvenseweg 42
B-1000 Bruxelles/B-1000 Brussel
Tél. (02) 512 00 26
Fax (02) 511 01 84

Jean De Lannoy
Avenue du Roi 202/Koningslaan 202
B-1060 Bruxelles/B-1060 Brussel
Tél. (02) 538 51 69
Fax (02) 538 08 41

**Autres distributeurs/
Overige verkooppunten:**

**Librairie européenne/
Europese boekhandel**
Rue de la Loi 244/Wetstraat 244
B-1040 Bruxelles/B-1040 Brussel
Tél. (02) 231 04 35
Fax (02) 735 08 60

Document delivery:

Credoc
Rue de la Montagne 34/Bergstraat 34
Boîte 11/Bus 11
B-1000 Bruxelles/B-1000 Brussel
Tél. (02) 511 69 41
Fax (02) 513 31 95

DANMARK

J. H. Schultz Information A/S
Herstedvang 10-12
DK-2620 Albertslund
Tlf. 43 63 23 00
Fax (Sales) 43 63 19 69
Fax (Management) 43 63 19 49

DEUTSCHLAND

Bundesanzeiger Verlag
Breite Straße 78-80
Postfach 10 05 34
D-50445 Köln
Tel. (02 21) 20 29-0
Fax (02 21) 2 02 92 78

GREECE/ΕΛΛΑΔΑ

G.C. Eleftheroudakis SA
International Bookstore
Nikis Street 4
GR-10563 Athens
Tel. (01) 322 63 23
Fax 323 98 21

ESPAÑA

Boletín Oficial del Estado
Trafalgar, 27-29
E-28071 Madrid
Tel. (91) 536 22 95
Fax (91) 536 23 49

Mundi-Premsa Libros, SA

Castelló, 37
E-28001 Madrid
Tel. (91) 431 33 99 (Libros)
431 32 22 (Suscripciones)
435 36 37 (Dirección)
Fax (91) 575 39 98

Sucursals:

Librería Internacional AEDOS

Consejo de Ciento, 391
E-08009 Barcelona
Tel. (93) 488 34 92
Fax (93) 487 76 59

**Librería de la Generalitat
de Catalunya**

Rambla dels Estudis, 118 (Palau Moja)
E-08002 Barcelona
Tel. (93) 302 68 35
Tel. (93) 302 64 62
Fax (93) 302 12 99

FRANCE

**Journal officiel
Service des publications
des Communautés européennes**
26, rue Desaix
F-75727 Paris Cedex 15
Tél. (1) 40 58 77 01/31
Fax (1) 40 58 77 00

IRELAND

Government Supplies Agency
4-5 Harcourt Road
Dublin 2
Tel. (1) 66 13 111
Fax (1) 47 80 645

ITALIA

Licosa SpA
Via Duca di Calabria 1/1
Casella postale 552
I-50125 Firenze
Tel. (055) 64 54 15
Fax 64 12 57

GRAND-DUCHÉ DE LUXEMBOURG

Messageries du livre
5, rue Raiffeisen
L-2411 Luxembourg
Tél. 40 10 20
Fax 49 06 61

NEDERLAND

SDU Servicecentrum Uitgeverijen
Postbus 20014
2500 EA 's-Gravenhage
Tel. (070) 37 89 880
Fax (070) 37 89 783

ÖSTERREICH

**Manz'sche Verlags-
und Universitätsbuchhandlung**
Kohlmarkt 16
A-1014 Wien
Tel. (1) 531 610
Fax (1) 531 61-181

Document delivery:

Wirtschaftskammer
Wiedner Hauptstraße
A-1045 Wien
Tel. (0222) 50105-4356
Fax (0222) 50206-297

PORTUGAL

Imprensa Nacional
Casa da Moeda, EP
Rua Marquês Sá da Bandeira, 16-A
P-1099 Lisboa Codex
Tel. (01) 353 03 99
Fax (01) 353 02 94

**Distribuidora de Livros
Bertrand, Ld.®**

Grupo Bertrand, SA
Rua das Terras dos Vales, 4-A
Apartado 37
P-2700 Amadora Codex
Tel. (01) 49 59 050
Fax 49 60 255

SUOMI/FINLAND

Akateeminen Kirjakauppa
Akademiska Bokhandeln
Pohjois-Espalanadi 39 / Norra esplanaden 39
PL / PB 128
FIN-00101 Helsinki / Helsingfors
Tel. (90) 121 4322
Fax (90) 121 44 35

SVERIGE

BTJ AB
Traktorvägen 13
S-22100 Lund
Tel. (046) 18 00 00
Fax (046) 18 01 25
30 79 47

UNITED KINGDOM

HMSO Books (Agency section)
HMSO Publications Centre
51 Nine Elms Lane
London SW8 5DR
Tel. (0171) 873 9090
Fax (0171) 873 8463

ICELAND

**BOKABUD
LARUSAR BLÖNDAL**
Skólavörðustíg, 2
IS-101 Reykjavík
Tel. 11 56 50
Fax 12 55 60

NORGE

Narvesen Info Center
Bertrand Narvesens vei 2
Postboks 6125 Etterstad
N-0602 Oslo 6
Tel. (22) 57 33 00
Fax (22) 68 19 01

SCHWEIZ/SUISSE/SVIZZERA

OSEC
Stampfenbachstraße 85
CH-8035 Zürich
Tel. (01) 365 54 49
Fax (01) 365 54 11

BÄLGARIJA

Europress Klassika BK Ltd
66. bd Vitoshka
BG-1463 Sofia
Tel./Fax (2) 52 74 75

ČESKÁ REPUBLIKA

NIS ČR
Havelkova 22
CZ-130 00 Praha 3
Tel./Fax (2) 24 22 94 33

HRVATSKA

Mediatrade
P. Hatza 1
HR-4100 Zagreb
Tel. (041) 43 03 92
Fax (041) 45 45 22

MAGYARORSZAG

Euro-Info-Service
Honvéd Europa Ház
Margitsziget
H-1138 Budapest
Tel./Fax (1) 111 60 61, (1) 111 62 16

POLSKA

Business Foundation
ul. Krucza 38/42
PL-00-512 Warszawa
Tel. (2) 621 99 93, 628 28 82
International Fax&Phone (0-39) 12 00 77

ROMÂNIA

Euromedia
65. Strada Dionisie Lupu
RO-70184 Bucuresti
Tel./Fax 1-31 29 646

RUSSIA

CCEC
9.60-Ieliva Oktyabrya Avenue
117312 Moscow
Tel./Fax (095) 135 52 27

SLOVAKIA

**Slovak Technical
Library**
Nám. slobody 19
SLO-812 23 Bratislava 1
Tel. (7) 52 204 52
Fax (7) 52 957 85

CYPRUS

**Cyprus Chamber of Commerce
and Industry**
Chamber Building
38 Grivas Dhigenis Ave
3 Deligiorgis Street
PO Box 1455
Nicosia
Tel. (2) 44 95 00, 46 23 12
Fax (2) 36 10 44

MALTA

Miller Distributors Ltd
PO Box 25
Malta International Airport LQA 05 Malta
Tel. 66 44 88
Fax 67 67 99

TÜRKIYE

Pres AS
Istiklal Caddesi 469
TR-80050 Tunel-Istanbul
Tel. (1) 520 92 96, 528 55 66
Fax (1) 520 64 57

ISRAEL

ROY International
31. Habarzel Street
69710 Tel Aviv
Tel. (3) 49 78 02
Fax (3) 49 78 12

Sub-agent (Palestinian authorities):

INDEX Information Services

PO Box 19502
Jerusalem
Tel. (2) 27 16 34
Fax (2) 27 12 19

**EGYPT/
MIDDLE EAST**

Middle East Observer
41 Sherif St.
Cairo
Tel/Fax (2) 393 97 32

**UNITED STATES OF AMERICA,
CANADA**

UNIPUB

4611-F Assembly Drive
Lanham, MD 20706-4391
Tel. Toll Free (800) 274 48 88
Fax (301) 459 00 56

CANADA

**Subscriptions only
Uniquement abonnements**

Renout Publishing Co. Ltd

1294 Algoma Road
Ottawa, Ontario K1B 3W8
Tel. (613) 741 43 33
Fax (613) 741 54 39

AUSTRALIA

Hunter Publications
58A Gipps Street
Collingwood
Victoria 3066
Tel. (3) 417 53 61
Fax (3) 419 71 54

JAPAN

Procurement Services Int. (PSI-Japan)

Kyoku Dome Postal Code 102
Tokyo Kojimachi Post Office
Tel. (03) 32 34 69 21
Fax (03) 32 34 69 15

Sub-agent:

**Kinokuniya Company Ltd
Journal Department**

PO Box 55 Chitose
Tokyo 156
Tel. (03) 34 39-0124

SOUTH and EAST ASIA

Legal Library Services Ltd

Orchard
PO Box 0523
Singapore 9123
Tel. 243 24 98
Fax 243 24 79

SOUTH AFRICA

Safto
5th Floor, Export House
Cnr Maude & West Streets
Sandton 2146
Tel. (011) 883-3737
Fax (011) 883-6569

**ANDERE LÄNDER
OTHER COUNTRIES
AUTRES PAYS**

**Office des publications officielles
des Communautés européennes**

2, rue Mercier
L-2985 Luxembourg
Tel. 29 29-1
Télex PUBOF LU 1324 b
Fax 48 85 73, 48 68 17

Price (excl. VAT) in Luxembourg: Single copy ECU 7 • Subscription ECU 62



OFICINA DE PUBLICACIONES OFICIALES DE LAS COMUNIDADES EUROPEAS
KONTORET FOR DE EUROPÆISKE FÆLLESSKABERS OFFICIELLE PUBLIKATIONER
AMT FÜR AMTLICHE VERÖFFENTLICHUNGEN DER EUROPÄISCHEN GEMEINSCHAFTEN
ΥΠΗΡΕΣΙΑ ΕΠΙΣΗΜΩΝ ΕΚΔΟΣΕΩΝ ΤΩΝ ΕΥΡΩΠΑΪΚΩΝ ΚΟΙΝΟΤΗΤΩΝ
OFFICE FOR OFFICIAL PUBLICATIONS OF THE EUROPEAN COMMUNITIES
OFFICE DES PUBLICATIONS OFFICIELLES DES COMMUNAUTÉS EUROPÉENNES
UFFICIO DELLE PUBBLICAZIONI UFFICIALI DELLE COMUNITÀ EUROPEE
BUREAU VOOR OFFICIËLE PUBLIKATIES DER EUROPESE GEMEENSCHAPPEN
SERVIÇO DAS PUBLICAÇÕES OFICIAIS DAS COMUNIDADES EUROPEIAS



L - 2985 Luxembourg

CA-BH-95-009-EN-C