

Industrial Trends - November 1991

Downturn in manufacturing continues

The summer months of July and August again saw **no upturn** in industrial production in the European Community. As a result of sharp falls in output in Italy, principally in the capital goods sector, there was a slight fall in **Community production** in August. In Germany too growth has slowed down. There are no signs of recovery in France and the United Kingdom. The **EUR12 production index**, adjusted for the number of working days, is currently estimated at 84.0 (1985=100) for August 1991, representing a fall of 3.9 % compared with August 1990. After seasonal adjustment, the estimated index for August 1991 is 112.1, which compares with 114.4 in July and 115.9 in January. **The downturn in industry is therefore continuing.**

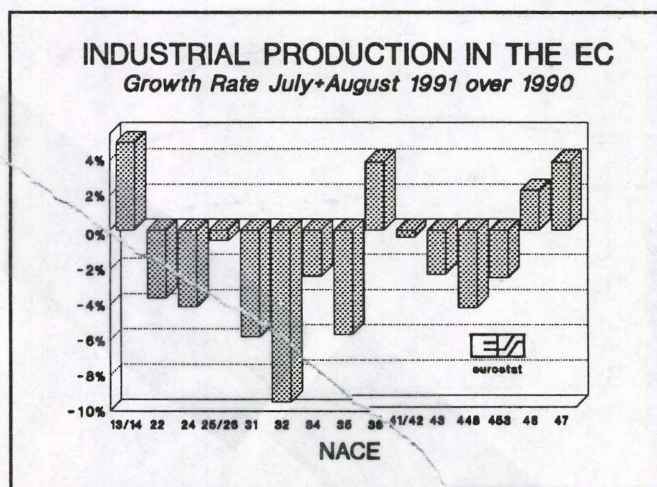
In the **USA** there has been a slight recovery (quarter-on-quarter growth rate of 1.6 %), while for **Japan** no production growth can be observed (quarter-on-quarter growth rate of 0.0 %).

As regards the **various types of goods**, the sharpest fall has been in the capital goods sector. The cumulative rates of change for the last two months compared with the same period in 1990 are:

- 1.0 % for commodities and intermediate goods (USA -2.8, Japan 2.4)
- 3.2 % for capital goods (USA -3.7, Japan 0.7)
- 0.3 % for consumer goods (USA 0.8, Japan -0.2).

When each **Member State's** production index of all industry for the last two months (July and August) is compared with that for the same period in 1990, different rates of change do emerge at national level, but here too the general trend is towards **stagnation**: Italy, -5.8 %; Ireland, -2.4 %; Greece, -2.2 %; United Kingdom, -2.1 %; Spain, -1.3 %; France, -0.7 %; Germany 2.0 %; the Netherlands, 2.3 %; and Denmark, 4.1 %.

A similar picture emerges at **branch level**, with **production falling** rather than rising in the European Community.



LIBRARY

- NACE 13/14 Mineral oil extrn & refining
- NACE 22 Production of metals
- NACE 24 Non metallic mineral prod.
- NACE 25/26 Chemical industry
- NACE 31 Manuf. of metallic articles
- NACE 32 Mechanical engineering
- NACE 34 Electrical engineering
- NACE 35 Man. of motor vehicles
- NACE 36 Other means of transport
- NACE 41/42 Food, drink and tob. ind.
- NACE 43 Textile industry
- NACE 44 Footwear industry
- NACE 45 Clothing industry
- NACE 46 Timber and furniture ind.
- NACE 47 Paper ind., printing

Manuscript completed on = 11.11.91

For further information please contact: B. FELDMANN
Eurostat, L-2920 Luxembourg, tel. 4301-4401 Fax: 4301 4771

Price (excl. VAT) in Luxembourg: Subscription ECU 160

Catalogue number: CA-NL-91-018-EN-C

OSCE:128

INDUSTRIELLE PRODUKTION

INDUSTRIAL PRODUCTION

PRODUCTION INDUSTRIELLE

LANGFRISTIGER TREND

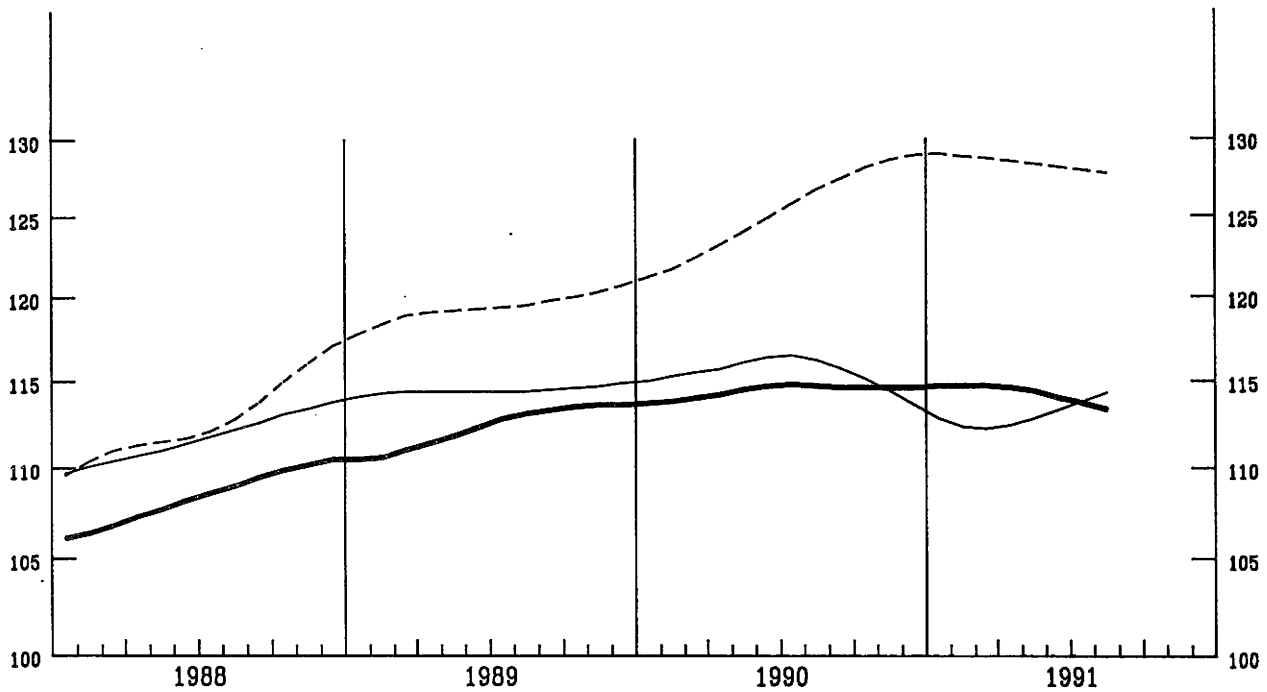
LONG TERM TREND

TENDANCE A LONG TERME

NACE 1-4

1985 = 100

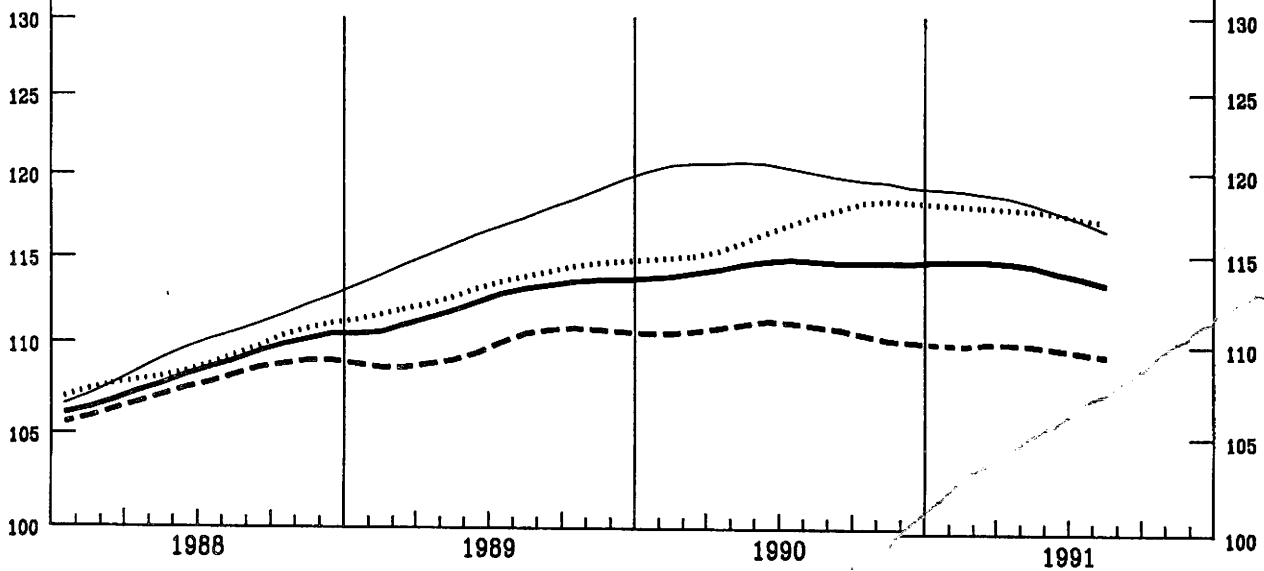
— USA — EUR 12 - - - JAPAN



EUR 12

1985 = 100

—	INDUSTRIE NACE 1-4	INDUSTRY NACE 1-4	INDUSTRIE NACE 1-4
- - -	INT ROHSTOFFE UND HALBWAREN	INTERMEDIATE GOODS	BIENS INTERMEDIAIRES
—	INV INVESTITIONSGUETER	CAPITAL GOODS	BIENS D'INVESTISSEMENT
.....	CON VERBRAUCHSGUETER	CONSUMER GOODS	BIENS DE CONSOMMATION



EINFACH-LOGARITHISCHE SKALA

SEMI-LOGARITHMIC SCALE

ECHELLE SEMI-LOGARITHMIQUE

BASISINDIKATOREN BASIC INDICATORS INDICATEURS DE BASE

1985 = 100

	Letzte Zahl / Latest figure / Dernier chiffre			Veränderung / Change / Variation	
	Zeitraum Period Période	Pro Arbeitstag Per working day Par jour ouvrable	Saisonbereinigt Seasonally adjusted Désaisonnalisés	Pro Arbeitstag Per working day Par jour ouvrable %B (1)	Saisonbereinigt Seasonally adjusted Désaisonnalisés %A (2)

PRODUKTIONSINDEZES

INDICES OF PRODUCTION

INDICES DE PRODUCTION

NACE 1-4 GESAMTE INDUSTRIE OHNE BAUINDUSTRIE	EUR12	08	91	TOTAL INDUSTRY EXCLUDING CONSTRUCTION	84.0	112.1	ENSEMBLE DE L'INDUSTRIE SANS BATIMENT	-0.8	0.3
B	05	91		118.3		115.0		-4.8	-2.9
DK	08	91		114.9		109.2		4.3	1.4
D	08	91		103.4		120.4		2.7	-0.2
GR	06	91		103.6		101.1		-2.3	0.3
E	07	91		120.5		114.1		-2.4	0.7
F	08	91		81.5		113.4		-0.5	0.9
IRL	07	91		132.0		142.0		0.1	-3.0
I	08	91		51.9		112.7		-2.7	0.3
L	06	91		131.8		122.6		0.2	1.8
NL	08	91		90.0		111.8		2.9	1.3
P	04	91		135.7		131.5		2.6	-1.1
UK	08	91		94.5		105.5		-3.3	1.5
USA	08	91		117.2		114.6		-2.1	1.6
J	08	91		120.1		127.4		1.5	0.0

INT GRUNDSTOFFE U. PROD. GÜTER	EUR12	08	91	INTERMEDIATE GOODS	80.3	108.2	BIENS INTERMÉDIAIRES	-0.9	0.6
B	05	91		121.3		116.9		-4.2	-2.2
DK	08	91		121.2		109.7		2.5	0.3
D	08	91		99.9		111.5		0.8	-0.8
GR	06	91		103.6		100.8		-3.0	0.6
E	07	91		112.0		108.4		-1.5	0.1
F	08	91		75.0		111.8		0.6	1.2
IRL	07	91		125.5		129.6		7.8	-1.2
I	08	91		54.6		111.8		-2.9	-0.1
L	05	91		120.6		115.1		1.5	1.0
NL	08	91		79.0		106.3		4.6	3.0
P	04	91		130.0		123.0		0.3	0.1
UK	08	91		90.1		101.1		-1.8	2.9
USA	08	91		124.1		119.0		-3.2	2.4
J	08	91		122.2		128.5		2.4	-0.4

INV INVESTITIONSGÜTER	EUR12	08	91	CAPITAL GOODS INDUSTRIES	91.4	119.9	BIENS D'INVESTISSEMENT	0.0	1.3
B	05	91		116.6		113.8		-1.2	-0.9
DK	08	91		107.0		107.6		3.8	1.8
D	08	91		107.3		126.4		3.6	1.0
GR	06	91		126.3		119.6		3.7	4.0
E	07	91		140.9		119.1		-10.0	-0.2
F	08	91		91.0		107.7		-5.2	-0.6
IRL	07	91		163.6		188.6		-7.3	-6.9
I	08	91		42.3		116.7		-5.0	0.8
L	05	91		119.0		108.5		4.6	8.7
NL	08	91		100.7		116.8		2.5	-0.2
P	04	91		120.5		114.7		-1.7	-0.8
UK	08	91		99.2		114.3		-7.4	-0.7
USA	08	91		120.5		118.5		-3.5	-0.4
J	08	91		124.6		137.4		0.3	-0.7

CON VERBRAUCHSGÜTER	EUR12	08	91	CONSUMER GOODS	88.2	115.7	BIENS DE CONSOMMATION	0.5	0.0
B	05	91		119.1		116.8		-2.7	-2.4
DK	08	91		115.9		109.8		4.8	1.1
D	08	91		104.2		123.1		4.2	-0.9
GR	06	91		98.1		97.9		-3.0	-1.4
E	07	91		126.7		120.3		-0.9	1.0
F	08	91		88.8		120.2		0.4	1.3
IRL	07	91		127.4		128.8		-1.2	-1.5
I	08	91		52.1		112.2		-0.6	0.9
L	05	91		134.7		126.8		5.2	1.6
NL	08	91		108.0		120.2		2.1	-0.2
P	04	91		134.4		131.1		0.5	-0.1
UK	08	91		100.8		108.9		-2.7	0.5
USA	08	91		121.5		115.7		0.6	2.8
J	08	91		106.7		117.7		-0.1	0.7

UNSATZ

TURNOVER

CHIFFRE D'AFFAIRES

NACE 1-4 GESAMTE INDUSTRIE OHNE BAUINDUSTRIE	EUR12	06	91	TOTAL INDUSTRY EXCLUDING CONSTRUCTION	134.8	130.2	ENSEMBLE DE L'INDUSTRIE SANS BATIMENT	3.6	0.6
---	-------	----	----	---------------------------------------	-------	-------	---------------------------------------	-----	-----

ABHAENGIGE BESCHAFTIGTE

NUMBER OF EMPLOYEES

NOMBRE DE SALARIÉS

NACE 1-4 GESAMTE INDUSTRIE OHNE BAUINDUSTRIE	EUR12	III	90	TOTAL INDUSTRY EXCLUDING CONSTRUCTION	98.2	97.8	ENSEMBLE DE L'INDUSTRIE SANS BATIMENT	0.0	0.0
---	-------	-----	----	---------------------------------------	------	------	---------------------------------------	-----	-----

% B(1) - Letzte 3 Monate gegenüber dem entsprechenden Vorjahreszeitraum
- Last 3 months compared with corresponding months of previous year
- Les 3 derniers mois par rapport aux mois correspondants de l'année précédente

% A(2) - Letzte 3 Monate gegenüber den vorhergehenden 3 Monaten
- Last 3 months compared with previous 3 months
- Les 3 derniers mois par rapport aux 3 mois précédents

PRODUKTIONSINDIZES - SAISONBEREINIGT
INDICES OF PRODUCTION - SEASONALLY ADJUSTED
INDICES DE PRODUCTION - DÉSAISONNALISÉS

1985 = 100

	1988	1989	1990	1991							
				02	03	04	05	06	07	08	
NACE 1-4											
GESAMTE INDUSTRIE OHNE BAUINDUSTRIE				TOTAL INDUSTRY EXCLUDING CONSTRUCTION				ENSEMBLE DE L'INDUSTRIE SANS BATIMENT			
EUR12	108.8	113.0	115.0	115.5	113.3	114.0	113.8	115.6	114.4	112.1	EUR12
B	108.9	112.7	118.5	116.4	114.6	110.4	115.0	:	:	:	B
DK	104.8	107.2	107.8	108.6	104.9	112.0	111.2	106.7	116.9	109.2	DK
D	106.5	112.1	117.9	121.3	120.6	121.9	119.4	123.2	123.0	120.4	D
GR	103.7	105.3	103.3	99.5	101.2	100.9	101.0	101.1	:	:	GR
E	111.1	116.1	116.1	114.4	106.6	118.3	114.8	112.7	114.1	:	E
F	107.5	112.0	113.5	113.9	110.3	112.4	112.4	112.5	112.2	113.4	F
IRL	123.1	137.4	143.8	151.0	145.3	144.0	140.1	145.2	142.0	:	IRL
I	114.2	118.6	117.8	116.0	116.5	112.7	114.8	118.7	113.6	112.7	I
L	110.0	118.6	118.0	117.0	119.8	117.5	115.9	122.6	:	:	L
NL	101.3	106.4	109.3	120.0	107.9	109.8	114.8	113.8	111.4	111.8	NL
P	116.2	124.1	135.2	139.4	138.6	131.5	:	:	:	:	P
UK	109.5	109.9	109.2	107.0	107.0	104.4	104.0	107.4	107.1	105.5	UK
USA	111.7	114.5	115.7	112.0	111.2	111.8	112.7	113.7	114.4	114.6	USA
J	112.8	119.7	125.3	129.8	127.1	127.4	130.2	126.9	130.8	127.4	J
INT											
GRUNDSTOFFE U. PROD. GÜTER				INTERMEDIATE GOODS				BIENS INTERMÉDIAIRES			
EUR12	108.2	110.7	111.2	111.7	109.1	108.9	109.4	111.0	110.1	108.2	EUR12
INV											
INVESTITIONSGÜTER				CAPITAL GOODS INDUSTRIES				BIENS D'INVESTISSEMENT			
EUR12	110.7	118.0	121.6	120.3	119.4	120.1	119.4	123.0	120.5	119.9	EUR12
CON											
VERBRAUCHSGÜTER				CONSUMER GOODS				BIENS DE CONSOMMATION			
EUR12	109.0	113.0	116.3	118.0	116.7	118.7	117.9	118.9	118.7	115.7	EUR12

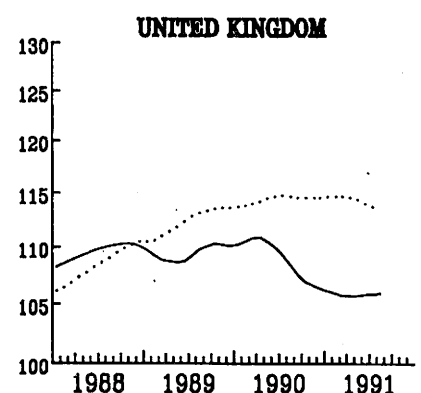
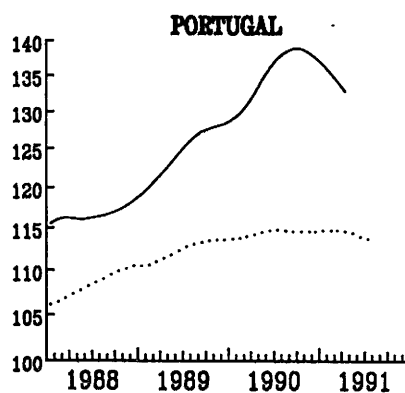
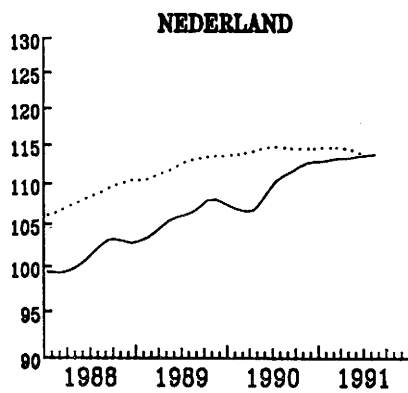
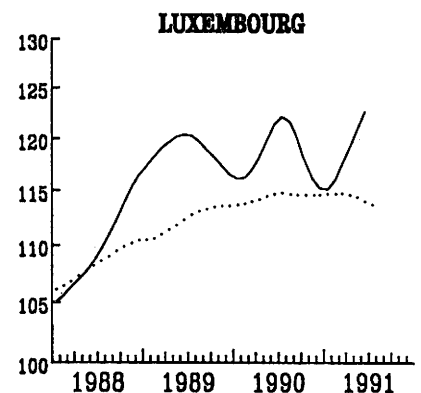
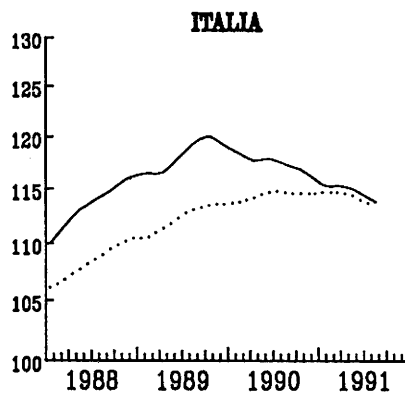
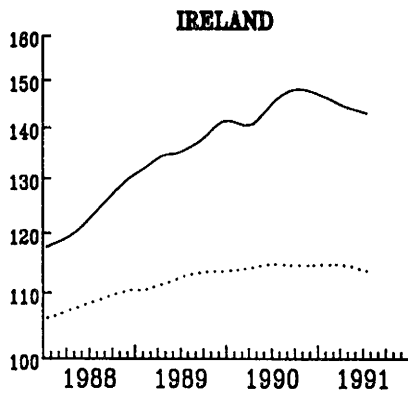
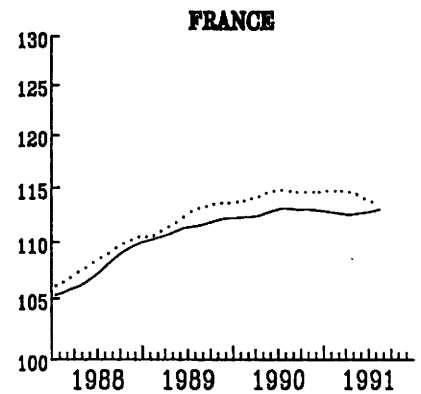
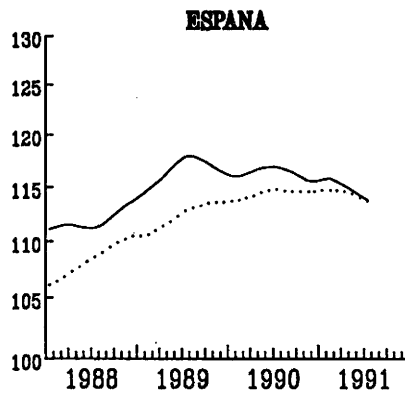
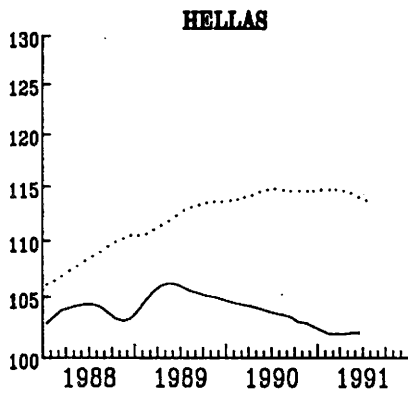
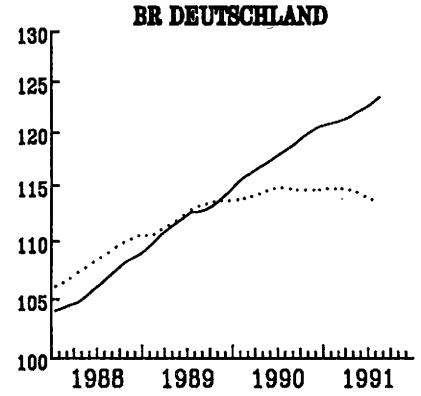
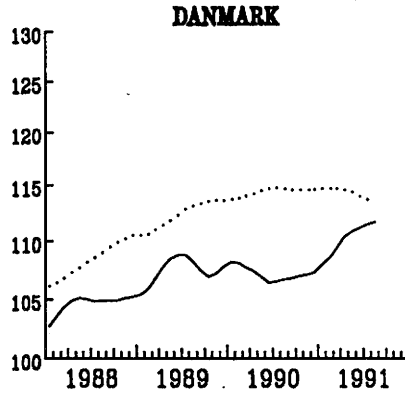
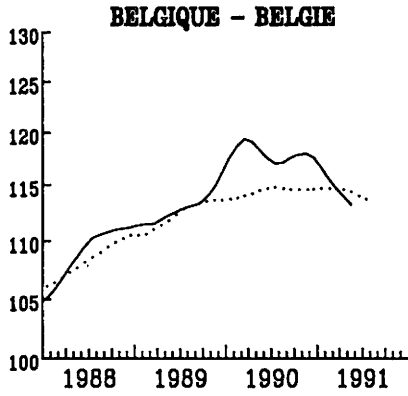
Type 02

INDUSTRIELLE PRODUKTION
LANGFRISTIGER TREND

INDUSTRIAL PRODUCTION
LONG TERM TREND

PRODUCTION INDUSTRIELLE
TENDANCE A LONG TERME

NACE 1-4 1985=100



..... EUR 12

KINFACH-LOGARITHMISCHE SKALA

SEMI-LOGARITHMIC SCALE

ECHELLE SEMI-LOGARITHMIQUE

PRODUKTIONSINDIZES - PRO ARBEITSTAG
INDICES OF PRODUCTION - PER WORKING DAY
INDICES DE PRODUCTION - PAR JOUR OUVRABLE

1985 = 100

	1988	1989	1990	1990			1991			
				06	07	08	06	07	08	
NACE 1-4										
GESAMTE INDUSTRIE OHNE BAUINDUSTRIE				TOTAL INDUSTRY EXCLUDING CONSTRUCTION			ENSEMBLE DE L'INDUSTRIE SANS BATIMENT			
EUR12	108.8	113.0	115.0	117.0	108.9	87.4	118.1	108.8	84.0	EUR12
B	108.9	112.7	118.5	126.8	88.4	105.6	:	:	:	B
DK	104.8	107.2	107.8	110.9	77.9	115.9	115.9	86.9	114.9	DK
D	106.5	112.1	117.9	116.3	112.0	107.5	125.0	116.4	103.4	D
GR	103.7	105.3	103.3	105.4	105.9	93.9	103.6	:	:	GR
E	111.1	116.1	116.1	124.7	121.7	69.6	119.9	120.5	:	E
F	107.5	112.0	113.5	115.8	107.5	82.4	115.7	107.0	81.5	F
IRL	123.1	137.4	143.8	156.9	134.5	123.7	159.2	132.0	:	IRL
I	114.2	118.6	117.8	124.8	121.2	58.5	127.1	117.4	51.9	I
L	110.0	118.6	118.0	132.0	121.0	93.5	131.8	:	:	L
NL	101.3	106.4	109.3	102.0	88.0	88.0	106.0	90.0	90.0	NL
P	116.2	124.1	135.2	140.1	140.6	99.9	:	:	:	P
UK	109.5	109.9	109.2	110.6	100.2	96.6	104.9	97.8	94.5	UK
USA	111.7	114.5	115.7	118.5	115.4	119.4	115.7	112.9	117.2	USA
J	112.8	119.7	125.3	127.4	131.1	119.8	129.2	134.7	120.1	J
INT										
GRUNDSTOFFE U. PROD. GUETER				INTERMEDIATE GOODS			BIENS INTERMEDIAIRES			
EUR12	108.2	110.7	111.2	111.5	103.9	83.4	111.4	104.4	80.3	EUR12
INV										
INVESTITIONSGUETER				CAPITAL GOODS INDUSTRIES			BIENS D'INVESTISSEMENT			
EUR12	110.7	118.0	121.6	127.6	117.1	92.8	130.0	116.2	91.4	EUR12
CON										
VERBRAUCHSGUETER				CONSUMER GOODS			BIENS DE CONSOMMATION			
EUR12	109.0	113.0	116.3	119.4	112.2	91.0	122.5	113.4	88.2	EUR12

Type 03

INDUSTRIELLE PRODUKTION

Veränderung gegenüber dem
Vorjahresquartal

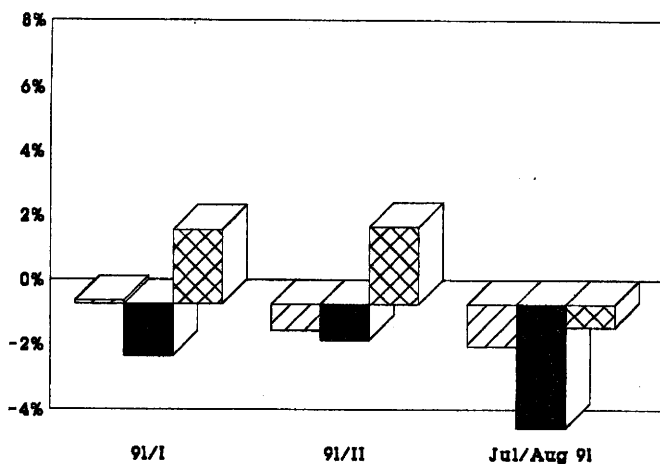
INDUSTRIAL PRODUCTION

Change from the corresponding quarter
of the previous year

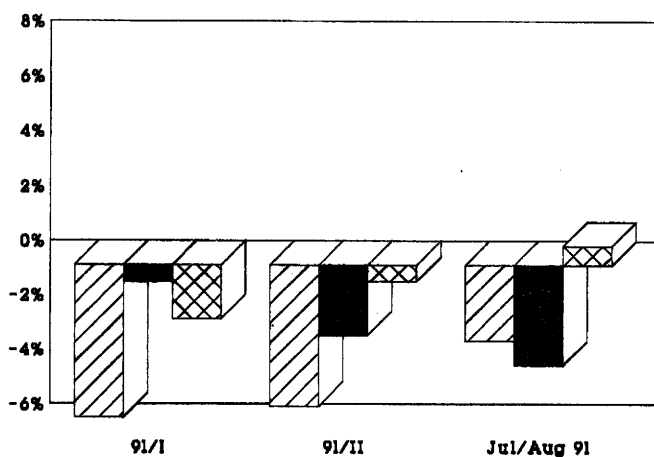
PRODUCTION INDUSTRIELLE

Variation par rapport au trimestre
de l'année précédente

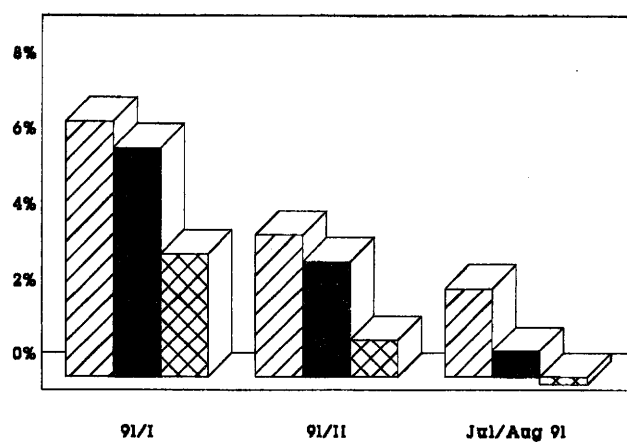
EUR 12



USA



JAPAN



Grundstoffe und Produktionsgüter

Investitionsgüter

Verbrauchsgüter

Intermediate goods

Capital goods

Consumption goods

Biens intermédiaires

Biens d'investissement

Biens de consommation

ERZEUGERPREISINDEX

PRODUCER PRICE INDEX

INDICE DES PRIX A LA PRODUCTION

EUR 12 - 1985 = 100

IN LANDESWAHRUNG

- Industrie NACE 1-4
- Rohstoffe und Halbwaren
- - - Investitionsgueter
- Verbrauchsgueter

IN ECU

- - - Industrie NACE 1-4

IN NATIONAL CURRENCY

- Industry NACE 1-4
- Intermediate Goods
- Capital Goods
- Consumer Goods

IN ECU

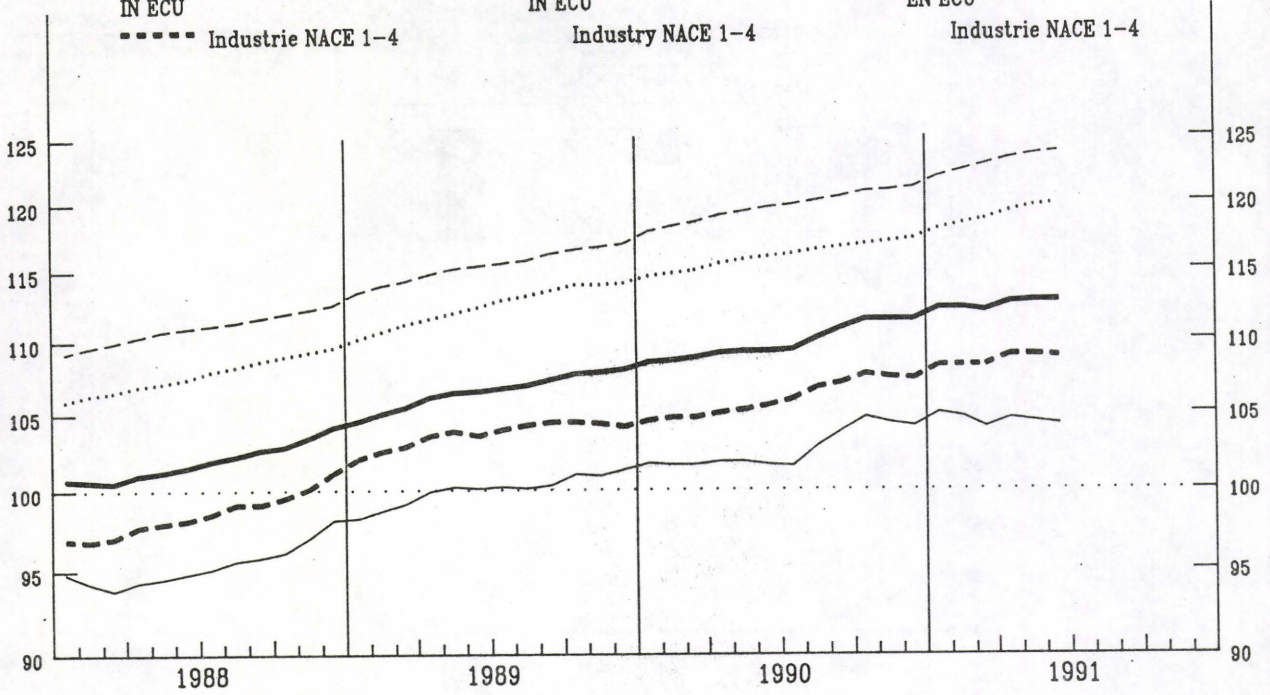
- Industry NACE 1-4

EN MONNAIE NATIONALE

- Industrie NACE 1-4
- Biens Intermediaires
- Biens d'Investissement
- Biens de Consommation

EN ECU

- Industrie NACE 1-4



EINFACH-LOGARITHISCHE SKALA

SEMI-LOGARITHMIC SCALE

ECHELLE SEMI-LOGARITHMIQUE

VERAENDERUNG % T/T-12

VARIATION % T/T-12

VARIATION % T/T-12

— IN LANDESWAHRUNG

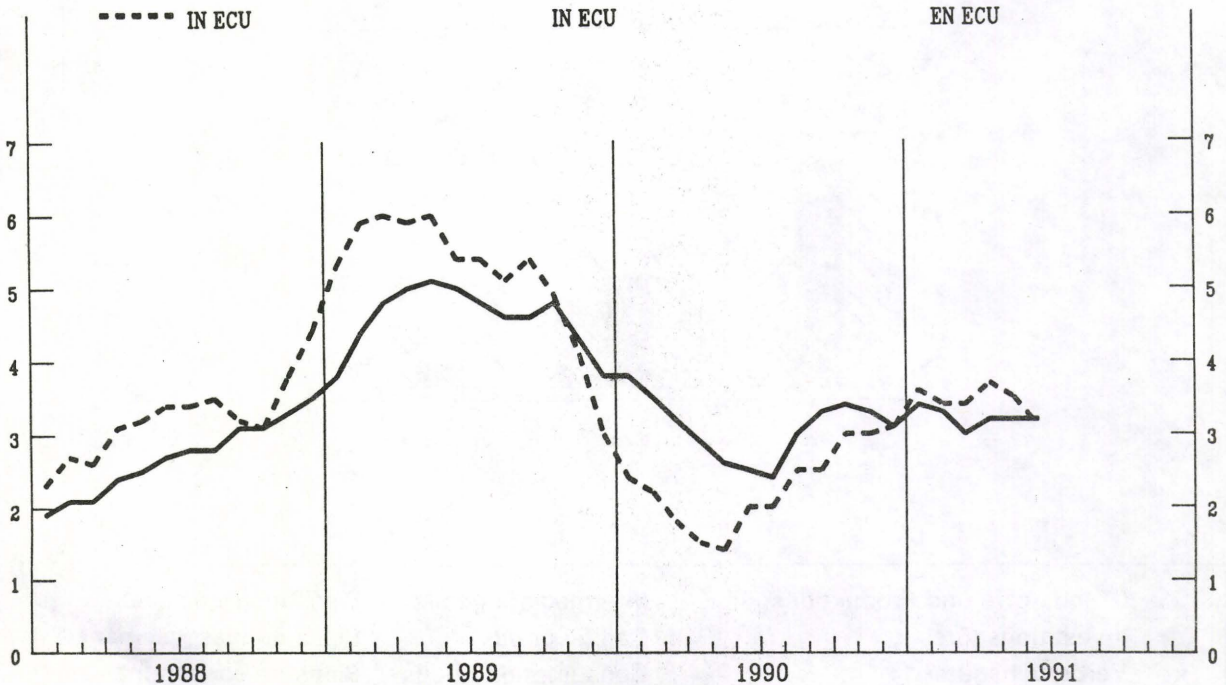
IN NATIONAL CURRENCY

EN MONNAIE NATIONALE

- - - IN ECU

IN ECU

EN ECU



GESAMTE INDUSTRIE OHNE BAUINDUSTRIE
TOTAL INDUSTRY EXCLUDING CONSTRUCTION
ENSEMBLE DE L'INDUSTRIE SANS BATIMENT
NACE 1-4
PREISINDIZES - PRICE INDICES - INDICES DE PRIX

1985 = 100

	1989	1990	1991							Letzte Zahl Latest figure Dernier chiffre		
			02	03	04	05	06	07	08	% T/T-12	% T/T-1	
IN LANDESMÄHRUNG			IN NATIONAL CURRENCY							EXPRIMÉS EN MONNAIE NATIONALE		
EUR12	106.5	109.8	112.2	112.0	112.6	112.7	112.7	:	:	3.2	-0.0	EUR12
B	93.0	93.6	91.9	91.4	92.1	92.4	92.6	92.5	92.9	-1.5	0.4	B
DK	107.0	108.8	109.0	109.0	109.0	110.0	110.0	110.0	110.0	:	:	DK
D	99.3	101.0	102.3	102.0	102.9	103.0	103.1	104.0	104.0	2.7	:	D
GR	163.3	169.0	208.7	210.5	215.9	219.6	217.6	225.4	227.4	18.0	0.9	GR
E	109.2	111.5	113.2	112.7	112.8	112.9	112.9	113.1	113.2	1.7	0.0	E
F (1)	105.7	107.6	108.9	108.8	108.8	108.7	108.7	:	:	1.6	-0.0	F (1)
IRL	112.7	113.0	113.5	113.9	114.2	114.2	114.2	114.4	114.3	1.4	-0.1	IRL
I	113.1	117.8	121.5	121.6	121.5	121.2	121.3	121.6	121.6	2.8	:	I
L	100.8	98.8	96.0	95.0	97.2	97.5	96.7	96.4	96.5	-2.1	0.0	L
NL	86.0	87.3	89.2	89.2	89.2	89.4	89.6	89.8	90.0	3.1	0.2	NL
P	:	:	:	:	:	:	:	:	:	:	:	P
UK	111.6	117.6	122.0	121.6	123.2	123.3	123.0	123.4	123.4	4.5	:	UK
IN ECU			IN ECU							EXPRIMÉS EN ECU		
EUR12	103.6	106.0	108.2	108.2	108.9	108.9	108.8	:	:	3.1	-0.1	EUR12
B	96.3	99.1	97.9	97.1	97.5	98.0	98.4	98.2	98.8	-0.9	0.5	B
DK	106.6	111.1	110.9	110.9	110.7	112.0	111.4	111.0	111.2	-0.4	0.1	DK
D	106.8	109.6	111.2	110.7	111.1	111.4	111.7	112.7	112.8	3.5	0.1	D
GR	95.6	98.2	99.6	99.6	101.2	102.2	101.5	105.1	105.2	6.2	0.1	GR
E	108.0	111.2	114.0	113.9	114.3	114.3	113.7	113.4	113.9	0.6	0.4	E
F (1)	102.3	105.7	106.1	105.8	106.0	105.8	105.9	:	:	0.9	0.1	F (1)
IRL	103.8	105.3	105.4	105.8	105.9	106.2	106.3	106.5	106.4	1.8	-0.1	IRL
I	108.3	112.0	114.2	114.9	114.9	114.7	114.9	114.9	114.6	2.1	-0.3	I
L	104.4	104.6	102.3	100.9	102.9	103.4	102.7	102.4	102.6	-1.5	0.1	L
NL	92.5	94.9	97.0	96.8	96.4	96.8	97.2	97.5	97.7	3.9	0.3	NL
P	:	:	:	:	:	:	:	:	:	:	:	P
UK	97.7	97.1	102.0	102.3	104.8	104.5	103.6	104.2	103.9	3.6	-0.3	UK

(1) Schätzung - Estimation Eurostat

GESAMTE INDUSTRIE OHNE BAUINDUSTRIE
TOTAL INDUSTRY EXCLUDING CONSTRUCTION
ENSEMBLE DE L'INDUSTRIE SANS BATIMENT

NACE 1-4

1985 = 100

	EUR12	B	DK	D(WEST)	GR	E	F	IRL	I	L	NL	P	UK
PRODUKTIONSINDIZES													
INDICES OF PRODUCTION													
INDICES DE PRODUCTION													
1985	100.0	100.0	100.0	100.0	100.0	100.0	100.0	100.0	100.0	100.0	100.0	100.0	100.0
1986	102.4	100.8	106.5	102.4	99.8	103.1	100.9	102.2	104.1	102.1	100.2	107.3	102.4
1987	104.4	103.0	102.8	102.7	98.1	107.8	102.8	111.2	106.8	101.2	101.1	112.0	105.7
1988	108.8	108.9	104.8	106.5	103.7	111.1	107.5	123.1	114.2	110.0	101.3	116.2	109.5
1989	113.0	112.7	107.2	112.1	105.3	116.1	112.0	137.4	118.6	118.6	106.4	124.1	109.9
1990	115.0	118.5	107.8	117.9	103.3	116.1	113.5	143.8	117.8	118.0	109.3	135.2	109.2
UMSATZ													
TURNOVER													
CHIFFRE D'AFFAIRES													
Saisonbereinigt													
Seasonally adjusted													
Désaisonnalisés													
1990 07	127.5	118.9	118.6	121.3			126.1	132.7	136.7	111.4			130.0
08	126.5	124.3	120.6	125.1			121.9	135.8	136.2	112.7			130.2
09	126.6	124.2	110.5	120.4			120.2	136.9	134.8	108.5			132.2
10	132.6	131.8	121.2	127.9			129.1	133.9	143.6	112.4			135.0
11	131.2	127.6	121.5	128.3			128.1	135.8	137.7	110.4			132.4
12	127.4	120.6	114.0	120.9			120.8	140.5	140.4	103.4			132.5
1991 01	132.2		121.1	131.9			128.1	134.2	144.6	107.1			130.0
02	129.1		118.5	127.7			122.5	136.4	139.6	102.8			129.8
03	126.9		117.2	124.7			120.4	142.2	135.1	102.7			128.3
04	131.4		120.0	131.8			126.5	140.7	140.8	109.8			128.8
05	129.1		120.2	127.3			122.2	141.3	141.0	105.2			129.9
06	130.2		117.7	131.4			120.8	147.4	137.6	108.4			130.7
07			128.6	134.1				137.2	148.9				130.5
08			118.4	127.1									129.6
AUSFUHR													
EXPORTS													
EXPORTATIONS													
Mengen, Saisonbereinigt													
Volumes, seasonally adjusted													
En volume, désaisonnalisés													
1990 01	103.7		114.3	119.7	160.8	116.1	125.9	138.2	110.5		126.8	167.4	120.2
02	97.8		113.8	108.8	166.7	102.6	117.0	127.7	103.3		120.4	170.1	112.6
03	99.5		117.1	114.0	131.1	119.2	125.4	149.0	98.9		128.7	184.5	116.7
04	93.7		111.3	105.8	149.9	109.6	116.4	141.6	101.9		120.8	165.0	116.4
05	98.2		112.3	111.9	130.2	122.0	120.3	134.3	102.1		125.6	177.7	122.8
06	94.1		116.5	97.9	126.9	119.8	117.7	137.7	110.6		124.1	175.7	113.3
07	93.6		110.9	106.3	116.7	114.7	122.5	129.4	101.3		123.0	170.5	110.8
08	95.1		114.6	109.4	142.0	115.9	119.8	124.8	95.4		122.7	162.4	117.4
09	88.4		108.3	100.0	91.6	118.9	117.1	134.4	99.7		115.4	163.5	109.2
10	96.2		115.6	111.0	152.9	114.6	134.1	143.2	101.5		126.9	173.8	119.5
11	93.4		120.5	109.4	129.3	131.8	129.7	132.4	99.0		121.2	189.1	121.3
12	84.6		117.9	95.4	101.4	118.1	113.3	137.2	105.1		111.6	170.6	109.0
1991 01	103.4		126.0	124.1	157.2	135.4	134.0	147.3	114.5		122.3	189.1	124.1
02	98.7		121.3	115.1	149.8	139.4	128.9	144.7	116.4		122.3	183.4	117.7
03	95.3		119.4	109.5	125.8	130.4	126.2	145.1	107.7		127.3	174.6	111.9
04	101.8		131.7	114.4	154.2	151.0	140.9	140.0	112.1		125.2	187.9	129.1
05	100.2		125.4	116.0	146.9	135.9	132.0	131.3	108.1		128.5	192.0	122.2
EINFUHR													
IMPORTS													
IMPORTATIONS													
Mengen, Saisonbereinigt													
Volumes, seasonally adjusted													
En volume, désaisonnalisés													
1990 01	144.6		116.9	137.9	153.3	213.1	150.5	134.2	129.5		129.0	245.5	129.2
02	134.4		100.9	129.6	120.3	205.4	138.7	122.9	119.5		120.4	217.4	117.8
03	139.3		104.7	132.8	134.3	210.5	144.3	129.7	122.0		126.7	267.2	126.5
04	136.6		101.5	132.5	151.4	206.0	138.0	134.3	119.1		120.2	252.4	120.9
05	145.8		112.7	134.4	142.7	218.6	146.8	135.4	129.8		135.5	263.0	124.0
06	138.0		107.4	127.6	137.4	224.2	136.3	125.2	118.7		123.7	240.6	117.9
07	141.6		106.9	137.5	132.5	212.2	148.2	127.1	121.5		123.9	257.7	120.2
08	144.9		113.7	143.3	129.0	193.4	142.2	130.0	118.0		128.3	236.3	118.6
09	134.3		101.0	135.8	121.8	203.0	142.0	128.6	118.0		122.8	240.1	117.0
10	146.4		112.4	145.5	108.8	208.5	155.4	134.9	122.1		132.8	262.7	121.3
11	147.0		118.0	160.6	105.2	225.2	148.2	127.2	127.2		131.2	263.0	117.9
12	133.1		99.6	143.7	82.8	197.1	138.3	119.1	111.1		117.6	242.9	112.6
1991 01	168.2		127.2	182.5	133.6	253.2	160.5	138.3	143.5		140.3	288.3	126.9
02	158.1		117.0	167.6	149.5	228.4	152.4	139.6	134.9		135.7	264.8	120.3
03	151.5		107.0	163.8	123.2	216.8	147.5	138.7	119.0		132.0	268.9	119.2
04	168.6		127.3	174.8	125.3	272.2	159.7	134.1	141.3		141.1	292.0	125.6
05	160.8		119.3	178.9	120.9	237.0	148.3	131.8	137.2		138.5	271.3	121.9
ERZEUGERPREISINDIZES													
PRODUCER PRICE INDICES													
INDICE DE PRIX A LA PRODUCTION													
1990 07	109.3	92.4	109.0	100.7	188.4	110.7	107.4	112.9	117.1	98.7	86.8		116.9
08	110.1	94.4	110.0	101.3	192.8	111.2	107.7	112.7	118.2	98.5	87.3		118.1
09	110.8	95.5	110.0	101.7	197.7	112.1	108.1	113.1	118.8	98.0	87.8		119.2
10	111.4	95.3	109.0	102.1	201.0	112.9	108.4	113.1	119.6	97.4	88.2		120.3
11	111.4	94.2	109.0	101.8	203.8	112.7	108.7	113.2	119.7	96.6	87.7		120.6
12	111.4	93.4	109.0	101.5	204.6	112.8	109.0	113.2	119.9	96.4	87.2		120.6
1991 01	112.2	92.9	109.0	102.4	208.5	113.5	108.9	113.1	121.3	96.4	89.3		121.4
02	112.2	91.9	109.0	102.3	208.7	113.2	108.9	113.5	121.5	96.0	89.2		122.0
03	112.0	91.4	109.0	102.0	210.5	112.7	108.8	113.9	121.6	95.0	89.2		121.6
04	112.6	92.1	109.0	102.9	215.9	112.8	108.8	114.2	121.5	97.2	89.2		123.2
05	112.7	92.4	110.0	103.0	219.6	112.9	108.7	114.2	121.2	97.5	89.4		123.3
06	112.7	92.6	110.0	103.1	217.6	112.9	108.7	114.2	121.3	96.7	89.6		123.0
07		92.5	110.0	104.0	225.4	113.1	113.1	114.4	121.6	96.4	89.8		123.4
08		92.9	110.0	104.0	227.4	113.2		114.3	121.6	96.5	90.0		123.4
ABHAENIG BESCHAEFTIGTE													
NUMBER OF EMPLOYEES													
NOMBRE DE SALARIES													
Saisonbereinigt													
Seasonally adjusted													
Désaisonnalisés													
1989 I	97.1	94.8	98.0	102.7	102.6		94.6	96.4	89.5	97.1	100.8		96.7
II	97.5	95.1	98.1	103.3	112.3		94.7	96.9	89.4	97.2	101.1		96.3
III	97.8	95.8	98.8	104.1	110.7		95.1	98.2	89.3	96.8	101.4		96.1
IV	98.0	96.2	99.5	104.8	113.1		95.2	99.0	88.9	96.4	101.7		95.9
1990 I	97.8	96.6	99.3	105.7			95.4	99.3	88.4	96.2			95.7
II	97.8	96.9	99.5	105.3			95.7	99.8	87.9	95.9			95.3
III	97.8	96.8	99.5	107.0			95.7	100.2	87.5	95.2			95.3
IV		96.7	99.1	107.8			95.6	100.7		94.8			94.3
1991 I			98.0	108.4			95.0			94.5			94.3
II				108.4						94.0			

BAUGEWERBE
BUILDING AND CIVIL ENGINEERING
BATIMENT ET GENIE CIVIL
NACE 5

Produktionsindizes - Indices of production - Indices de production

INDICES OF PRODUCTION

INDICES DE PRODUCTION

1985 = 100

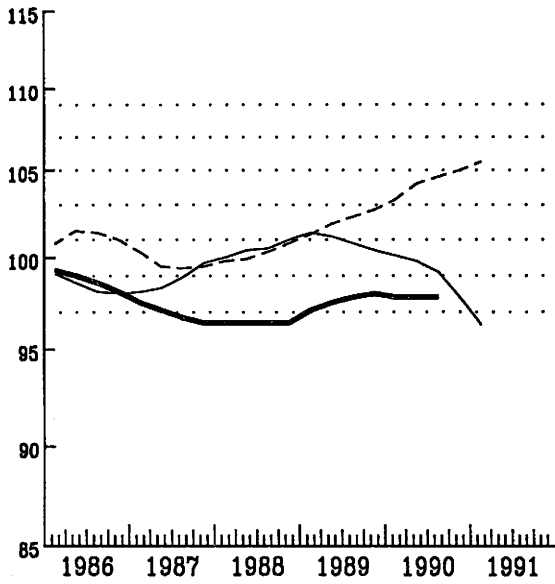
	BAUGEWERBE												
	EUR12	B	DK	D	GR	E	F	IRL	I	L	NL	P	UK
	BUILDING AND CIVIL ENGINEERING												
	BATIMENT & GENIE CIVIL												
1980	:	185.6	:	122.8	:	:	119.4	:	:	134.6	:	:	88.7
1981	:	152.9	95.5	112.4	:	:	118.2	:	:	131.6	:	:	81.8
1982	:	145.8	85.2	107.6	:	:	111.5	:	:	127.1	:	:	88.3
1983	:	118.3	83.6	108.9	:	:	106.4	:	:	124.4	:	:	95.1
1984	:	105.4	94.5	110.6	:	:	100.8	:	:	110.2	:	:	99.6
1985	:	100.0	100.0	100.0	:	:	100.0	:	:	100.0	:	:	100.0
1986	:	101.1	114.3	105.9	:	:	105.1	:	:	108.9	:	:	104.7
1987	:	99.0	115.8	105.5	:	:	110.6	:	:	118.2	:	:	110.7
1988	:	110.0	108.8	110.4	:	:	118.9	:	:	125.4	:	:	120.7
1989	:	115.9	97.9	118.0	:	:	124.3	:	:	135.3	:	:	125.8
1990	:	144.1	93.1	125.0	:	:	127.2	:	:	140.9	:	:	127.1
Arbeitsstglich													
Per working day													
Par jour ouvrable													
1988 09	:	135.0	112.4	133.1	:	:	126.0	:	:	149.6	:	:	122.1
10	:	129.1	111.2	136.6	:	:	129.1	:	:	144.8	:	:	122.4
11	:	131.1	111.2	116.8	:	:	134.9	:	:	133.3	:	:	122.4
12	:	84.9	108.9	88.0	:	:	108.2	:	:	84.0	:	:	122.4
1989 01	:	87.7	97.0	92.3	:	:	115.0	:	:	104.0	:	:	122.9
02	:	115.4	91.1	91.1	:	:	124.4	:	:	129.4	:	:	122.9
03	:	118.7	92.3	112.6	:	:	126.6	:	:	139.5	:	:	122.9
04	:	127.1	95.9	121.3	:	:	127.5	:	:	147.8	:	:	125.6
05	:	125.9	99.4	120.3	:	:	140.8	:	:	154.5	:	:	125.6
06	:	137.4	100.6	130.0	:	:	133.4	:	:	158.2	:	:	125.6
07	:	53.2	99.4	126.0	:	:	126.8	:	:	159.0	:	:	127.0
08	:	123.7	100.6	124.7	:	:	80.2	:	:	61.3	:	:	127.0
09	:	146.8	100.6	134.2	:	:	131.2	:	:	155.1	:	:	127.0
10	:	135.4	100.6	143.3	:	:	134.7	:	:	154.7	:	:	125.6
11	:	131.7	100.6	127.1	:	:	136.0	:	:	149.6	:	:	125.6
12	:	87.3	97.0	92.8	:	:	114.8	:	:	110.6	:	:	125.6
1990 01	:	115.7	91.1	93.2	:	:	119.4	:	:	84.1	:	:	125.7
02	:	138.3	85.2	96.5	:	:	125.4	:	:	132.2	:	:	125.7
03	:	161.2	85.2	127.0	:	:	131.1	:	:	148.2	:	:	125.7
04	:	156.0	88.8	128.6	:	:	136.1	:	:	159.5	:	:	127.4
05	:	163.1	93.5	136.1	:	:	141.5	:	:	170.0	:	:	127.4
06	:	171.3	94.7	132.0	:	:	141.6	:	:	181.2	:	:	127.4
07	:	64.6	95.9	137.7	:	:	125.4	:	:	172.4	:	:	130.1
08	:	152.9	95.9	128.8	:	:	83.0	:	:	61.8	:	:	130.1
09	:	170.1	95.9	141.7	:	:	136.9	:	:	167.7	:	:	130.1
10	:	163.1	99.4	153.4	:	:	136.1	:	:	163.6	:	:	123.6
11	:	170.9	97.0	131.3	:	:	138.4	:	:	158.0	:	:	123.6
12	:	102.6	94.7	93.6	:	:	111.3	:	:	91.7	:	:	123.6
1991 01	:	104.8	88.8	98.1	:	:	123.7	:	:	97.7	:	:	:
02	:	80.3	87.6	69.5	:	:	113.3	:	:	78.9	:	:	:
03	:	142.0	84.0	131.3	:	:	134.5	:	:	159.9	:	:	:
04	:	141.1	80.5	140.2	:	:	138.8	:	:	172.3	:	:	:
05	:	136.5	80.5	135.0	:	:	149.9	:	:	173.9	:	:	:
06	:	:	79.3	139.3	:	:	142.7	:	:	:	:	:	:
07	:	:	78.1	143.6	:	:	127.9	:	:	:	:	:	:
08	:	:	79.3	125.2	:	:	85.4	:	:	:	:	:	:
Saisonbereinigt													
Seasonally adjusted													
Désaisonnalisés													
1988 09	:	107.2	104.1	110.8	:	:	119.0	:	:	127.1	:	:	119.3
10	:	106.3	101.6	108.5	:	:	119.3	:	:	123.3	:	:	122.2
11	:	117.8	100.5	106.4	:	:	122.3	:	:	119.3	:	:	122.2
12	:	107.3	101.6	110.1	:	:	119.1	:	:	109.2	:	:	122.2
1989 01	:	119.3	102.6	122.6	:	:	127.1	:	:	150.9	:	:	127.2
02	:	141.2	104.4	142.1	:	:	129.4	:	:	153.0	:	:	127.2
03	:	125.1	104.1	121.6	:	:	123.5	:	:	137.8	:	:	127.2
04	:	111.6	104.1	111.3	:	:	120.0	:	:	128.5	:	:	126.3
05	:	110.4	100.5	108.8	:	:	125.1	:	:	130.4	:	:	126.3
06	:	112.1	98.0	115.5	:	:	122.2	:	:	128.9	:	:	126.3
07	:	105.6	96.1	110.4	:	:	124.7	:	:	131.4	:	:	124.1
08	:	111.1	96.1	114.7	:	:	121.6	:	:	122.8	:	:	124.1
09	:	119.2	93.3	112.9	:	:	124.2	:	:	131.8	:	:	124.1
10	:	114.2	91.9	114.3	:	:	124.9	:	:	133.2	:	:	125.5
11	:	117.5	90.9	116.5	:	:	123.5	:	:	134.6	:	:	125.5
12	:	111.2	90.1	115.6	:	:	125.7	:	:	138.4	:	:	125.5
1990 01	:	139.3	95.3	119.4	:	:	130.0	:	:	130.6	:	:	130.3
02	:	152.1	96.2	149.0	:	:	128.6	:	:	149.1	:	:	130.3
03	:	161.3	95.1	137.7	:	:	128.4	:	:	146.2	:	:	130.3
04	:	140.4	95.6	118.9	:	:	128.7	:	:	140.4	:	:	128.3
05	:	148.0	94.6	124.2	:	:	126.2	:	:	145.5	:	:	128.3
06	:	147.6	92.8	118.1	:	:	130.2	:	:	149.4	:	:	128.3
07	:	126.6	93.5	120.9	:	:	124.4	:	:	146.1	:	:	126.4
08	:	144.0	92.7	118.6	:	:	126.0	:	:	130.0	:	:	126.4
09	:	145.8	90.9	120.5	:	:	129.8	:	:	145.6	:	:	126.4
10	:	146.1	93.0	123.0	:	:	127.0	:	:	142.6	:	:	123.5
11	:	157.7	90.2	121.0	:	:	126.6	:	:	143.0	:	:	123.5
12	:	139.1	89.8	116.1	:	:	124.0	:	:	125.2	:	:	123.5
1991 01	:	128.5	93.0	121.1	:	:	129.3	:	:	137.3	:	:	120.3
02	:	100.3	96.9	106.2	:	:	117.3	:	:	100.6	:	:	120.3
03	:	138.4	93.2	142.8	:	:	130.4	:	:	152.6	:	:	120.3
04	:	123.8	87.5	130.7	:	:	130.3	:	:	150.0	:	:	:
05	:	119.7	83.2	124.4	:	:	133.4	:	:	146.6	:	:	:
06	:	:	79.6	125.6	:	:	130.7	:	:	:	:	:	:
07	:	:	77.8	126.3	:	:	127.4	:	:	:	:	:	:
08	:	:	77.5	125.2	:	:	128.8	:	:	:	:	:	:

**INDEX DER BESCHAFTIGUNG
NACE 1-4**

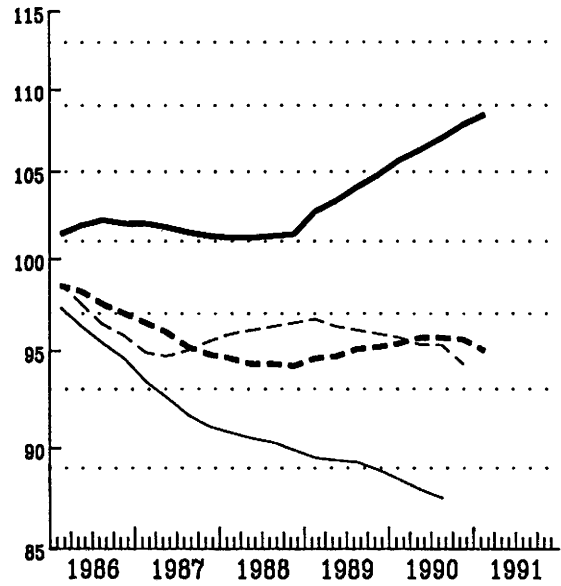
**INDEX OF EMPLOYMENT
NACE 1-4**

**INDICE DE L'EMPLOI
NACE 1-4**

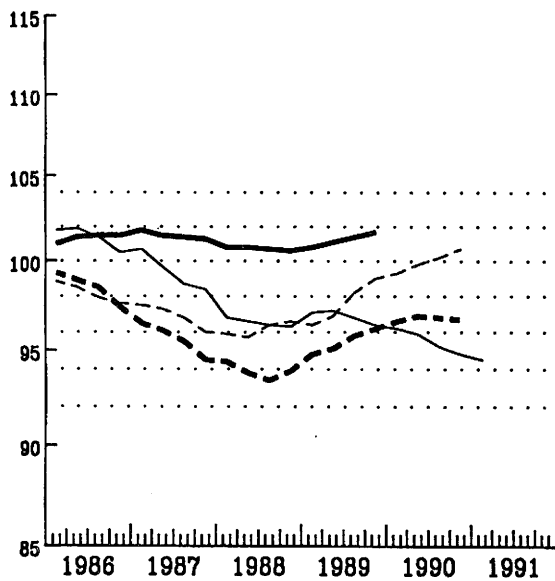
1985=100



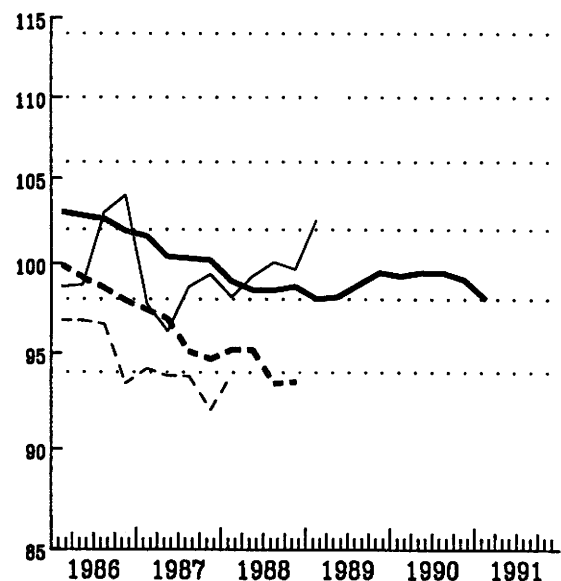
— EUR 12 — USA - - - Japan



— Deutschland - - - France
— Italia - - - United Kingdom



— Nederland - - - Belgique
— Luxembourg - - - Ireland



— Danmark - - - Espana
— Greece - - - Portugal