

Harmonized Indices of Consumer Prices

June 2007

Statistics in focus

ECONOMY AND FINANCE

92/2007

Prices

Author

Christine WIRTZ

Contents

| | |
|---|---|
| Price Indices..... | 2 |
| Rates of Change..... | 4 |
| EEA Index Numbers and Rates of Change..... | 6 |
| COICOP/HICP Main categories..... | 7 |

Euro area annual inflation, as measured by the Monetary Union Index of Consumer Prices (MUICP)¹, was 1.9% in June 2007, unchanged compared with May. A year earlier the rate was 2.5%.

EU annual inflation, as measured by the European Index of Consumer Prices (EICP)², was 2.1% in June 2007³, unchanged compared with May. A year earlier the rate was 2.4%.

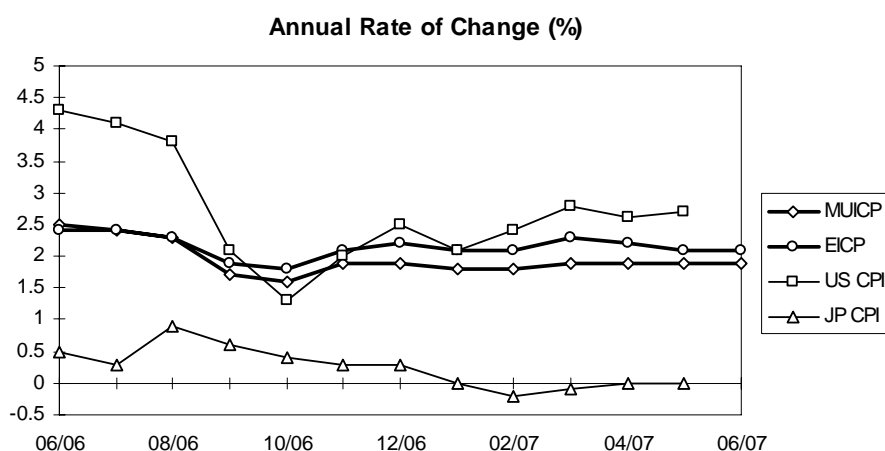
EEA annual inflation, as measured by the European Economic Area Index of Consumer Prices (EEAICP), was 2.1% in June 2007.

In June 2007, the highest annual inflation rates in the EU Member States were recorded in **Latvia** (8.9%), **Hungary** (8.5%) and **Estonia** (6.0%), and the lowest rates were observed in **Malta** (-0.6%), **Belgium, Denmark, France** and **Sweden** (1.3% each).

For the **USA**⁴ and **Japan**⁴ no June data was available in time for publication.

The annual inflation rates for the **euro area**, the **EU** and the latest available rates for the **USA** and **Japan** are shown in the graph below.

Methodological notes can be accessed via the Eurostat internet site under Special topics/HICP/Methodology – [Short guide for users](#) (issue date: 17/05/2004).



1 The MUICP is the official euro area aggregate. Its country coverage changes in line with the addition of new Member States and integrates them using a chain index formula. Since January 2007 the euro area includes: Belgium, Germany, Ireland, Greece, Spain, France, Italy, Luxembourg, the Netherlands, Austria, Portugal, Slovenia and Finland.

2 The EICP is the official EU aggregate. Its country coverage changes in line with the addition of new EU Member States and integrates them using a chain index formula.

3 Data for the United Kingdom for June 2007 were not available in time for publication. Due to this fact, EU and EEA totals were calculated using Eurostat estimates.

4 For the USA and Japan the national CPIs are given, which are not strictly comparable with the HICPs.



TABLE I
HARMONIZED INDICES OF CONSUMER PRICES
INDEX NUMBERS 2005 = 100

| | Euro area | EICP | BE | BG | CZ | DK | DE | EE | IE | EL | ES | FR | IT | CY |
|-----------------------------|-----------|---------|--------|--------|-------|-------|-------|--------|-------|--------|--------|--------|-------|--------|
| Annual Average Index | | | | | | | | | | | | | | |
| 2004 | 97.86 | 97.88 | 97.53 | 94.30 | 98.4 | 98.3 | 98.1 | 96.05 | 97.9 | 96.63 | 96.73 | 98.14 | 97.8 | 98.00 |
| 2005 | 100.00 | 100.00 | 100.00 | 100.00 | 100.0 | 100.0 | 100.0 | 100.00 | 100.0 | 100.00 | 100.00 | 100.00 | 100.0 | 100.00 |
| 2006 | 102.18 | 102.20 | 102.33 | 107.42 | 102.1 | 101.8 | 101.8 | 104.45 | 102.7 | 103.31 | 103.56 | 101.91 | 102.2 | 102.25 |
| Monthly Index - 2005 | | | | | | | | | | | | | | |
| Jan | 98.31 | 98.42 | 96.92 | 96.93 | 99.2 | 98.2 | 98.6 | 97.54 | 97.9 | 98.70 | 97.40 | 98.35 | 98.1 | 98.23 |
| Feb | 98.65 | 98.73 | 99.06 | 97.77 | 99.2 | 98.8 | 99.0 | 98.14 | 98.8 | 97.03 | 97.64 | 99.04 | 98.0 | 97.84 |
| Mar | 99.32 | 99.32 | 99.65 | 98.25 | 99.1 | 99.6 | 99.3 | 98.73 | 99.0 | 99.50 | 98.49 | 99.73 | 99.2 | 98.70 |
| Apr | 99.75 | 99.73 | 99.82 | 99.40 | 99.4 | 100.1 | 99.3 | 99.19 | 99.6 | 100.30 | 99.90 | 99.91 | 100.0 | 99.80 |
| May | 100.00 | 100.00 | 99.99 | 99.24 | 99.5 | 100.0 | 99.7 | 99.39 | 99.8 | 100.67 | 100.05 | 99.91 | 100.3 | 100.04 |
| Jun | 100.08 | 100.08 | 100.33 | 98.81 | 100.1 | 100.2 | 99.9 | 100.05 | 100.1 | 100.45 | 100.36 | 100.08 | 100.3 | 100.12 |
| Jul | 100.00 | 100.02 | 99.31 | 99.58 | 100.4 | 100.0 | 100.3 | 100.45 | 100.0 | 99.14 | 99.74 | 99.91 | 100.1 | 98.62 |
| Aug | 100.25 | 100.26 | 101.10 | 100.24 | 100.4 | 100.1 | 100.5 | 100.71 | 100.5 | 98.56 | 100.21 | 100.34 | 99.9 | 99.33 |
| Sep | 100.76 | 100.71 | 101.10 | 101.43 | 100.3 | 100.9 | 100.8 | 101.57 | 101.2 | 100.88 | 100.83 | 100.77 | 100.5 | 100.98 |
| Oct | 101.02 | 100.95 | 100.93 | 102.23 | 101.2 | 100.9 | 100.8 | 101.50 | 101.2 | 101.54 | 101.61 | 100.77 | 101.2 | 102.09 |
| Nov | 100.76 | 100.75 | 100.85 | 102.69 | 100.8 | 100.5 | 100.3 | 101.43 | 101.0 | 101.32 | 101.77 | 100.51 | 101.2 | 102.32 |
| Dec | 101.10 | 101.03 | 100.93 | 103.43 | 100.5 | 100.6 | 101.3 | 101.30 | 100.8 | 101.90 | 102.00 | 100.69 | 101.2 | 101.93 |
| Monthly Index - 2006 | | | | | | | | | | | | | | |
| Jan | 100.66 | 100.64 | 99.60 | 104.29 | 101.6 | 100.2 | 100.7 | 102.08 | 100.3 | 101.67 | 101.53 | 100.60 | 100.3 | 100.22 |
| Feb | 100.95 | 100.93 | 101.88 | 106.96 | 101.6 | 100.9 | 101.1 | 102.60 | 101.5 | 100.07 | 101.60 | 100.99 | 100.2 | 100.13 |
| Mar | 101.53 | 101.41 | 101.81 | 107.20 | 101.5 | 101.4 | 101.2 | 102.71 | 101.8 | 102.82 | 102.32 | 101.44 | 101.4 | 101.31 |
| Apr | 102.20 | 102.07 | 102.38 | 107.87 | 101.7 | 101.9 | 101.6 | 103.44 | 102.3 | 103.84 | 103.80 | 101.89 | 102.3 | 102.34 |
| May | 102.48 | 102.42 | 102.74 | 108.13 | 102.3 | 102.1 | 101.8 | 104.00 | 102.8 | 103.96 | 104.17 | 102.32 | 102.6 | 102.54 |
| Jun | 102.56 | 102.53 | 102.82 | 107.07 | 102.4 | 102.3 | 101.9 | 104.48 | 103.0 | 103.90 | 104.33 | 102.32 | 102.7 | 102.75 |
| Jul | 102.43 | 102.43 | 101.72 | 107.32 | 102.8 | 102.0 | 102.4 | 104.94 | 102.9 | 103.02 | 103.76 | 102.13 | 102.4 | 101.42 |
| Aug | 102.52 | 102.60 | 103.47 | 107.28 | 103.0 | 102.0 | 102.3 | 105.70 | 103.7 | 101.96 | 103.99 | 102.46 | 102.2 | 102.04 |
| Sep | 102.52 | 102.65 | 102.98 | 106.86 | 102.5 | 102.4 | 101.8 | 105.45 | 103.4 | 104.05 | 103.79 | 102.26 | 102.9 | 103.25 |
| Oct | 102.60 | 102.74 | 102.68 | 107.58 | 102.0 | 102.3 | 101.9 | 105.34 | 103.4 | 104.73 | 104.22 | 102.02 | 103.1 | 103.81 |
| Nov | 102.64 | 102.82 | 102.90 | 108.73 | 101.8 | 102.3 | 101.8 | 106.15 | 103.4 | 104.57 | 104.47 | 102.14 | 103.2 | 103.70 |
| Dec | 103.04 | 103.21 | 103.03 | 109.72 | 102.0 | 102.3 | 102.7 | 106.45 | 103.8 | 105.16 | 104.77 | 102.39 | 103.3 | 103.43 |
| Monthly Index - 2007 | | | | | | | | | | | | | | |
| Jan | 102.51 | 102.75 | 101.29 | 111.33 | 103.0 | 102.0 | 102.5 | 107.18 | 103.2 | 104.76 | 104.01 | 102.00 | 102.2 | 101.66 |
| Feb | 102.81 | 103.09 | 103.69 | 111.91 | 103.3 | 102.8 | 103.0 | 107.34 | 104.1 | 103.11 | 104.09 | 102.21 | 102.3 | 101.36 |
| Mar | 103.50 | 103.71 | 103.68 | 111.94 | 103.6 | 103.3 | 103.2 | 108.49 | 104.8 | 105.66 | 104.89 | 102.69 | 103.5 | 102.72 |
| Apr | 104.15 | 104.30 | 104.20 | 112.61 | 104.4 | 103.6 | 103.6 | 109.26 | 105.3 | 106.50 | 106.38 | 103.24 | 104.1 | 104.01 |
| May | 104.40 | 104.58 | 104.08 | 112.98 | 104.8 | 103.8 | 103.8 | 110.14 | 105.6 | 106.69 | 106.68 | 103.51 | 104.5 | 104.53 |
| Jun | 104.50p | 104.66p | 104.16 | 112.74 | 105.1 | 103.6 | 103.9 | 110.75 | 105.9 | 106.64 | 106.89 | 103.66 | 104.7 | 104.50 |
| Jul | | | | | | | | | | | | | | |
| Aug | | | | | | | | | | | | | | |
| Sep | | | | | | | | | | | | | | |
| Oct | | | | | | | | | | | | | | |
| Nov | | | | | | | | | | | | | | |
| Dec | | | | | | | | | | | | | | |

p provisional

TABLE I
HARMONIZED INDICES OF CONSUMER PRICES
2005 = 100 INDEX NUMBERS

| LV | LT | LU | HU | MT | NL | AT | PL | PT | RO | SI | SK | FI | SE | UK | |
|-----------------------------|--------|--------|--------|--------|---------|---------|-------|--------|--------|--------|--------|--------|--------|-------|-------------|
| Annual Average Index | | | | | | | | | | | | | | | |
| 93.55 | 97.41 | 96.37 | 96.63 | 97.53 | 98.52 | 97.94 | 97.9 | 97.92 | 91.68 | 97.60 | 97.28 | 99.24 | 99.18 | 98.0 | 2004 |
| 100.00 | 100.00 | 100.00 | 100.00 | 100.00 | 100.00 | 100.00 | 100.0 | 100.00 | 100.00 | 100.00 | 100.00 | 100.00 | 100.00 | 100.0 | 2005 |
| 106.57 | 103.79 | 102.96 | 104.03 | 102.58 | 101.65 | 101.69 | 101.3 | 103.04 | 106.60 | 102.54 | 104.26 | 101.28 | 101.50 | 102.3 | 2006 |
| Monthly Index - 2005 | | | | | | | | | | | | | | | |
| 96.39 | 98.49 | 96.70 | 98.14 | 96.05 | 98.53 | 99.15 | 99.4 | 98.35 | 96.33 | 97.79 | 99.20 | 98.84 | 98.88 | 98.6 | Jan |
| 97.29 | 98.65 | 98.32 | 98.69 | 96.67 | 99.34 | 99.50 | 99.4 | 98.27 | 96.92 | 98.47 | 99.31 | 99.45 | 99.32 | 98.8 | Feb |
| 97.85 | 99.21 | 98.65 | 99.15 | 97.14 | 100.14 | 99.93 | 99.5 | 98.67 | 97.21 | 99.48 | 99.31 | 99.88 | 99.58 | 99.3 | Mar |
| 98.89 | 99.53 | 99.38 | 99.88 | 100.65 | 100.30 | 99.76 | 99.9 | 99.37 | 98.97 | 99.54 | 99.53 | 100.15 | 99.76 | 99.7 | Apr |
| 99.65 | 99.77 | 99.86 | 100.48 | 101.27 | 100.22 | 99.76 | 100.1 | 99.92 | 99.26 | 99.88 | 99.63 | 99.80 | 99.85 | 100.0 | May |
| 100.27 | 99.93 | 99.78 | 100.76 | 101.27 | 99.90 | 100.02 | 100.0 | 99.99 | 99.56 | 99.93 | 100.01 | 100.06 | 99.93 | 100.0 | Jun |
| 100.27 | 99.77 | 99.70 | 100.67 | 101.35 | 99.58 | 99.76 | 100.0 | 100.38 | 100.53 | 100.72 | 99.69 | 99.71 | 99.67 | 100.1 | Jul |
| 100.13 | 99.85 | 101.08 | 100.21 | 101.66 | 99.90 | 99.93 | 100.0 | 100.54 | 100.64 | 100.22 | 99.63 | 100.06 | 99.93 | 100.4 | Aug |
| 101.66 | 100.65 | 101.65 | 100.39 | 101.66 | 100.78 | 100.55 | 100.4 | 100.70 | 101.23 | 101.18 | 99.90 | 100.67 | 100.72 | 100.6 | Sep |
| 102.35 | 101.30 | 102.46 | 100.44 | 102.60 | 100.78 | 100.55 | 100.7 | 101.09 | 102.10 | 101.35 | 101.24 | 100.67 | 100.98 | 100.7 | Oct |
| 102.70 | 101.38 | 101.41 | 100.62 | 99.79 | 100.46 | 100.37 | 100.5 | 101.32 | 103.33 | 100.78 | 101.24 | 100.32 | 100.63 | 100.7 | Nov |
| 102.56 | 101.46 | 101.00 | 100.58 | 99.87 | 100.06 | 100.72 | 100.2 | 101.40 | 103.90 | 100.67 | 101.30 | 100.41 | 100.72 | 101.0 | Dec |
| Monthly Index - 2006 | | | | | | | | | | | | | | | |
| 103.67 | 101.98 | 100.63 | 100.55 | 98.33 | 100.28 | 100.66 | 100.3 | 101.01 | 104.96 | 100.32 | 103.23 | 100.00 | 100.01 | 100.5 | Jan |
| 104.09 | 102.03 | 102.13 | 100.92 | 98.93 | 100.78 | 100.99 | 100.3 | 101.21 | 105.21 | 100.70 | 103.56 | 100.77 | 100.37 | 100.9 | Feb |
| 104.29 | 102.24 | 102.31 | 101.51 | 100.00 | 101.58 | 101.26 | 100.4 | 102.42 | 105.43 | 101.43 | 103.57 | 101.08 | 101.03 | 101.1 | Mar |
| 104.96 | 102.94 | 102.81 | 102.27 | 104.16 | 102.06 | 101.84 | 101.1 | 103.01 | 105.88 | 102.34 | 103.90 | 101.61 | 101.58 | 101.7 | Apr |
| 106.69 | 103.39 | 103.43 | 103.37 | 104.83 | 102.02 | 101.86 | 101.6 | 103.57 | 106.52 | 103.27 | 104.41 | 101.52 | 101.78 | 102.2 | May |
| 106.58 | 103.66 | 103.70 | 103.66 | 104.57 | 101.68 | 101.88 | 101.5 | 103.52 | 106.69 | 102.96 | 104.55 | 101.54 | 101.78 | 102.5 | Jun |
| 107.22 | 104.18 | 103.08 | 103.85 | 104.96 | 101.32 | 101.72 | 101.4 | 103.38 | 106.81 | 102.66 | 104.68 | 101.07 | 101.44 | 102.5 | Jul |
| 106.96 | 104.12 | 104.23 | 104.91 | 104.66 | 101.81 | 102.03 | 101.7 | 103.29 | 106.74 | 103.35 | 104.57 | 101.37 | 101.48 | 102.9 | Aug |
| 107.67 | 103.98 | 103.65 | 106.33 | 104.86 | 102.30 | 101.89 | 101.8 | 103.71 | 106.80 | 103.68 | 104.36 | 101.47 | 101.97 | 103.0 | Sep |
| 108.09 | 105.02 | 103.08 | 106.81 | 104.30 | 102.12 | 101.82 | 101.8 | 103.73 | 107.02 | 102.91 | 104.38 | 101.62 | 102.17 | 103.2 | Oct |
| 109.15 | 105.84 | 103.19 | 107.04 | 100.71 | 102.10 | 101.95 | 101.8 | 103.74 | 108.19 | 103.23 | 104.94 | 101.62 | 102.18 | 103.4 | Nov |
| 109.49 | 106.07 | 103.28 | 107.17 | 100.62 | 101.75 | 102.33 | 101.6 | 103.93 | 108.99 | 103.67 | 105.01 | 101.65 | 102.16 | 104.0 | Dec |
| Monthly Index - 2007 | | | | | | | | | | | | | | | |
| 111.02 | 106.09 | 102.93 | 109.03 | 99.49 | 101.50 | 102.41 | 101.9 | 103.62 | 109.23 | 103.12 | 105.53 | 101.31 | 101.64 | 103.2 | Jan |
| 111.63 | 106.49 | 104.01 | 109.99 | 99.72 | 102.16 | 102.72 | 102.2 | 103.58 | 109.28 | 103.00 | 105.63 | 101.95 | 102.11 | 103.7 | Feb |
| 113.14 | 107.10 | 104.72 | 110.64 | 100.49 | 103.47 | 103.21 | 102.8 | 104.88 | 109.37 | 104.10 | 105.70 | 102.70 | 102.69 | 104.2 | Mar |
| 114.21 | 108.02 | 105.33 | 111.15 | 103.04 | 104.05 | 103.65 | 103.3 | 105.85 | 109.94 | 105.27 | 105.99 | 103.17 | 103.17 | 104.5 | Apr |
| 115.06 | 108.55 | 105.79 | 112.05 | 103.76 | 104.09r | 103.83r | 103.9 | 106.04 | 110.64 | 106.47 | 106.01 | 102.85 | 103.03 | 104.8 | May |
| 116.04 | 108.83 | 106.04 | 112.47 | 103.96 | 103.55p | 103.82p | 104.1 | 106.00 | 110.82 | 106.84 | 106.08 | 103.00 | 103.15 | : | Jun |
| | | | | | | | | | | | | | | | Jul |
| | | | | | | | | | | | | | | | Aug |
| | | | | | | | | | | | | | | | Sep |
| | | | | | | | | | | | | | | | Oct |
| | | | | | | | | | | | | | | | Nov |
| | | | | | | | | | | | | | | | Dec |

p provisional r revised : not available

TABLE II
HARMONIZED INDICES OF CONSUMER PRICES
 RATES OF CHANGE (%)

| | Euro area | EICP | BE | BG | CZ | DK | DE | EE | IE | EL | ES | FR | IT | CY |
|--------------------------------------|-----------|------|-----|-----|-----|-----|-----|-----|-----|-----|-----|-----|-----|-----|
| Annual Average Rate of Change | | | | | | | | | | | | | | |
| 2004/12 | 2.1 | 2.0 | 1.9 | 6.1 | 2.6 | 0.9 | 1.8 | 3.0 | 2.3 | 3.0 | 3.1 | 2.3 | 2.3 | 1.9 |
| 2005/12 | 2.2 | 2.2 | 2.5 | 6.0 | 1.6 | 1.7 | 1.9 | 4.1 | 2.2 | 3.5 | 3.4 | 1.9 | 2.2 | 2.0 |
| 2006/12 | 2.2 | 2.2 | 2.3 | 7.4 | 2.1 | 1.9 | 1.8 | 4.4 | 2.7 | 3.3 | 3.6 | 1.9 | 2.2 | 2.2 |
| 2007/6 | 1.9p | 2.1p | 1.8 | 5.6 | 1.9 | 1.7 | 1.7 | 5.0 | 2.7 | 3.1 | 2.8 | 1.5 | 2.0 | 1.8 |
| Annual Rate of Change - 2005 | | | | | | | | | | | | | | |
| Jan | 1.9 | 2.0 | 2.0 | 3.2 | 1.5 | 0.8 | 1.6 | 4.2 | 2.1 | 4.2 | 3.1 | 1.6 | 2.0 | 2.8 |
| Feb | 2.1 | 2.1 | 2.3 | 3.8 | 1.4 | 1.0 | 1.9 | 4.6 | 2.1 | 3.2 | 3.3 | 1.9 | 2.0 | 2.4 |
| Mar | 2.1 | 2.1 | 2.8 | 4.4 | 1.1 | 1.3 | 1.6 | 4.8 | 1.9 | 2.9 | 3.4 | 2.1 | 2.2 | 2.4 |
| Apr | 2.1 | 2.1 | 2.4 | 5.3 | 1.4 | 1.7 | 1.4 | 4.7 | 2.2 | 3.3 | 3.5 | 2.0 | 2.1 | 2.7 |
| May | 2.0 | 2.0 | 2.3 | 5.1 | 0.9 | 1.2 | 1.6 | 2.9 | 2.1 | 3.2 | 3.0 | 1.7 | 2.3 | 2.1 |
| Jun | 2.1 | 2.0 | 2.7 | 6.5 | 1.3 | 1.7 | 1.8 | 3.2 | 1.9 | 3.2 | 3.2 | 1.8 | 2.1 | 1.5 |
| Jul | 2.2 | 2.1 | 2.7 | 6.0 | 1.4 | 1.8 | 1.8 | 3.9 | 2.2 | 3.9 | 3.3 | 1.8 | 2.1 | 1.3 |
| Aug | 2.2 | 2.2 | 2.9 | 7.2 | 1.4 | 2.4 | 1.9 | 4.2 | 2.1 | 3.6 | 3.3 | 2.0 | 2.1 | 1.5 |
| Sep | 2.6 | 2.5 | 3.0 | 7.5 | 2.0 | 2.3 | 2.5 | 4.9 | 2.7 | 3.8 | 3.8 | 2.4 | 2.2 | 2.1 |
| Oct | 2.5 | 2.4 | 2.2 | 8.2 | 2.4 | 1.9 | 2.3 | 4.5 | 2.6 | 3.7 | 3.5 | 2.0 | 2.6 | 2.2 |
| Nov | 2.3 | 2.3 | 2.3 | 8.0 | 2.2 | 1.8 | 2.2 | 4.0 | 2.2 | 3.4 | 3.4 | 1.8 | 2.4 | 2.0 |
| Dec | 2.2 | 2.1 | 2.8 | 7.4 | 1.9 | 2.2 | 2.1 | 3.6 | 1.9 | 3.5 | 3.7 | 1.8 | 2.1 | 1.4 |
| Annual Rate of Change - 2006 | | | | | | | | | | | | | | |
| Jan | 2.4 | 2.3 | 2.8 | 7.6 | 2.4 | 2.0 | 2.1 | 4.7 | 2.5 | 3.0 | 4.2 | 2.3 | 2.2 | 2.0 |
| Feb | 2.3 | 2.2 | 2.8 | 9.4 | 2.4 | 2.1 | 2.1 | 4.5 | 2.7 | 3.1 | 4.1 | 2.0 | 2.2 | 2.3 |
| Mar | 2.2 | 2.1 | 2.2 | 9.1 | 2.4 | 1.8 | 1.9 | 4.0 | 2.8 | 3.3 | 3.9 | 1.7 | 2.2 | 2.6 |
| Apr | 2.5 | 2.3 | 2.6 | 8.5 | 2.3 | 1.8 | 2.3 | 4.3 | 2.7 | 3.5 | 3.9 | 2.0 | 2.3 | 2.5 |
| May | 2.5 | 2.4 | 2.8 | 9.0 | 2.8 | 2.1 | 2.1 | 4.6 | 3.0 | 3.3 | 4.1 | 2.4 | 2.3 | 2.5 |
| Jun | 2.5 | 2.4 | 2.5 | 8.4 | 2.3 | 2.1 | 2.0 | 4.4 | 2.9 | 3.4 | 4.0 | 2.2 | 2.4 | 2.6 |
| Jul | 2.4 | 2.4 | 2.4 | 7.8 | 2.4 | 2.0 | 2.1 | 4.5 | 2.9 | 3.9 | 4.0 | 2.2 | 2.3 | 2.8 |
| Aug | 2.3 | 2.3 | 2.3 | 7.0 | 2.6 | 1.9 | 1.8 | 5.0 | 3.2 | 3.4 | 3.8 | 2.1 | 2.3 | 2.7 |
| Sep | 1.7 | 1.9 | 1.9 | 5.4 | 2.2 | 1.5 | 1.0 | 3.8 | 2.2 | 3.1 | 2.9 | 1.5 | 2.4 | 2.2 |
| Oct | 1.6 | 1.8 | 1.7 | 5.2 | 0.8 | 1.4 | 1.1 | 3.8 | 2.2 | 3.1 | 2.6 | 1.2 | 1.9 | 1.7 |
| Nov | 1.9 | 2.1 | 2.0 | 5.9 | 1.0 | 1.8 | 1.5 | 4.7 | 2.4 | 3.2 | 2.7 | 1.6 | 2.0 | 1.3 |
| Dec | 1.9 | 2.2 | 2.1 | 6.1 | 1.5 | 1.7 | 1.4 | 5.1 | 3.0 | 3.2 | 2.7 | 1.7 | 2.1 | 1.5 |
| Annual Rate of Change - 2007 | | | | | | | | | | | | | | |
| Jan | 1.8 | 2.1 | 1.7 | 6.8 | 1.4 | 1.8 | 1.8 | 5.0 | 2.9 | 3.0 | 2.4 | 1.4 | 1.9 | 1.4 |
| Feb | 1.8 | 2.1 | 1.8 | 4.6 | 1.7 | 1.9 | 1.9 | 4.6 | 2.6 | 3.0 | 2.5 | 1.2 | 2.1 | 1.2 |
| Mar | 1.9 | 2.3 | 1.8 | 4.4 | 2.1 | 1.9 | 2.0 | 5.6 | 2.9 | 2.8 | 2.5 | 1.2 | 2.1 | 1.4 |
| Apr | 1.9 | 2.2 | 1.8 | 4.4 | 2.7 | 1.7 | 2.0 | 5.6 | 2.9 | 2.6 | 2.5 | 1.3 | 1.8 | 1.6 |
| May | 1.9 | 2.1 | 1.3 | 4.5 | 2.4 | 1.7 | 2.0 | 5.9 | 2.7 | 2.6 | 2.4 | 1.2 | 1.9 | 1.9 |
| Jun | 1.9p | 2.1p | 1.3 | 5.3 | 2.6 | 1.3 | 2.0 | 6.0 | 2.8 | 2.6 | 2.5 | 1.3 | 1.9 | 1.7 |
| Jul | | | | | | | | | | | | | | |
| Aug | | | | | | | | | | | | | | |
| Sep | | | | | | | | | | | | | | |
| Oct | | | | | | | | | | | | | | |
| Nov | | | | | | | | | | | | | | |
| Dec | | | | | | | | | | | | | | |

p provisional

TABLE II
HARMONIZED INDICES OF CONSUMER PRICES
RATES OF CHANGE (%)

| LV | LT | LU | HU | MT | NL | AT | PL | PT | RO | SI | SK | FI | SE | UK | |
|--------------------------------------|-----|-----|-----|------|------|------|-----|-----|------|-----|-----|------|-----|-----|---------|
| Annual Average Rate of Change | | | | | | | | | | | | | | | |
| 6.2 | 1.2 | 3.2 | 6.8 | 2.7 | 1.4 | 2.0 | 3.6 | 2.5 | 11.9 | 3.7 | 7.5 | 0.1 | 1.0 | 1.3 | 2004/12 |
| 6.9 | 2.7 | 3.8 | 3.5 | 2.5 | 1.5 | 2.1 | 2.2 | 2.1 | 9.1 | 2.5 | 2.8 | 0.8 | 0.8 | 2.1 | 2005/12 |
| 6.6 | 3.8 | 3.0 | 4.0 | 2.6 | 1.7 | 1.7 | 1.3 | 3.0 | 6.6 | 2.5 | 4.3 | 1.3 | 1.5 | 2.3 | 2006/12 |
| 7.2 | 4.4 | 2.2 | 7.1 | 1.1 | 1.7p | 1.7p | 1.8 | 2.6 | 4.6 | 2.7 | 3.0 | 1.3 | 1.5 | : | 2007/6 |
| Annual Rate of Change - 2005 | | | | | | | | | | | | | | | |
| 6.7 | 2.8 | 2.9 | 4.0 | 1.9 | 1.2 | 2.4 | 3.8 | 2.0 | 8.9 | 2.3 | 3.2 | -0.2 | 0.5 | 1.6 | Jan |
| 7.0 | 3.2 | 3.2 | 3.4 | 2.5 | 1.5 | 2.3 | 3.6 | 2.1 | 8.9 | 2.8 | 2.7 | 0.0 | 1.2 | 1.7 | Feb |
| 6.6 | 3.2 | 3.5 | 3.3 | 2.6 | 1.5 | 2.4 | 3.4 | 2.3 | 8.7 | 3.3 | 2.4 | 0.9 | 0.5 | 1.9 | Mar |
| 7.1 | 3.2 | 3.7 | 3.8 | 2.0 | 1.3 | 2.3 | 3.1 | 2.0 | 10.0 | 2.7 | 2.7 | 1.2 | 0.4 | 1.9 | Apr |
| 6.5 | 1.9 | 3.7 | 3.5 | 2.4 | 1.0 | 2.0 | 2.1 | 1.8 | 10.0 | 2.1 | 2.4 | 0.6 | 0.2 | 1.9 | May |
| 6.6 | 2.0 | 3.2 | 3.7 | 2.1 | 1.5 | 2.0 | 1.4 | 0.6 | 9.7 | 1.7 | 2.6 | 1.0 | 0.8 | 2.0 | Jun |
| 6.3 | 1.9 | 4.0 | 3.6 | 1.7 | 1.5 | 2.1 | 1.5 | 1.9 | 9.4 | 2.0 | 2.1 | 0.9 | 0.7 | 2.3 | Jul |
| 6.3 | 2.3 | 4.3 | 3.5 | 2.5 | 1.6 | 1.9 | 1.8 | 2.5 | 8.9 | 1.8 | 2.1 | 1.0 | 1.1 | 2.4 | Aug |
| 7.4 | 2.5 | 4.7 | 3.6 | 2.0 | 1.7 | 2.6 | 1.9 | 2.7 | 8.5 | 3.2 | 2.3 | 1.1 | 1.1 | 2.5 | Sep |
| 7.7 | 3.0 | 5.0 | 3.1 | 3.0 | 1.5 | 2.0 | 1.6 | 2.6 | 8.2 | 3.2 | 3.5 | 0.8 | 0.9 | 2.3 | Oct |
| 7.6 | 2.9 | 3.6 | 3.3 | 4.3 | 1.6 | 1.7 | 1.1 | 2.5 | 8.7 | 2.1 | 3.6 | 1.0 | 1.2 | 2.1 | Nov |
| 7.1 | 3.0 | 3.4 | 3.3 | 3.4 | 2.0 | 1.6 | 0.8 | 2.5 | 8.7 | 2.4 | 3.9 | 1.1 | 1.3 | 1.9 | Dec |
| Annual Rate of Change - 2006 | | | | | | | | | | | | | | | |
| 7.6 | 3.5 | 4.1 | 2.5 | 2.4 | 1.8 | 1.5 | 0.9 | 2.7 | 9.0 | 2.6 | 4.1 | 1.2 | 1.1 | 1.9 | Jan |
| 7.0 | 3.4 | 3.9 | 2.3 | 2.3 | 1.4 | 1.5 | 0.9 | 3.0 | 8.6 | 2.3 | 4.3 | 1.3 | 1.1 | 2.0 | Feb |
| 6.6 | 3.1 | 3.7 | 2.4 | 2.9 | 1.4 | 1.3 | 0.9 | 3.8 | 8.5 | 2.0 | 4.3 | 1.2 | 1.5 | 1.8 | Mar |
| 6.1 | 3.4 | 3.5 | 2.4 | 3.5 | 1.8 | 2.1 | 1.2 | 3.7 | 7.0 | 2.8 | 4.4 | 1.5 | 1.8 | 2.0 | Apr |
| 7.1 | 3.6 | 3.6 | 2.9 | 3.5 | 1.8 | 2.1 | 1.5 | 3.7 | 7.3 | 3.4 | 4.8 | 1.7 | 1.9 | 2.2 | May |
| 6.3 | 3.7 | 3.9 | 2.9 | 3.3 | 1.8 | 1.9 | 1.5 | 3.5 | 7.2 | 3.0 | 4.5 | 1.5 | 1.9 | 2.5 | Jun |
| 6.9 | 4.4 | 3.4 | 3.2 | 3.6 | 1.7 | 2.0 | 1.4 | 3.0 | 6.2 | 1.9 | 5.0 | 1.4 | 1.8 | 2.4 | Jul |
| 6.8 | 4.3 | 3.1 | 4.7 | 3.0 | 1.9 | 2.1 | 1.7 | 2.7 | 6.1 | 3.1 | 5.0 | 1.3 | 1.6 | 2.5 | Aug |
| 5.9 | 3.3 | 2.0 | 5.9 | 3.1 | 1.5 | 1.3 | 1.4 | 3.0 | 5.5 | 2.5 | 4.5 | 0.8 | 1.2 | 2.4 | Sep |
| 5.6 | 3.7 | 0.6 | 6.3 | 1.7 | 1.3 | 1.3 | 1.1 | 2.6 | 4.8 | 1.5 | 3.1 | 0.9 | 1.2 | 2.4 | Oct |
| 6.3 | 4.4 | 1.8 | 6.4 | 0.9 | 1.6 | 1.6 | 1.3 | 2.4 | 4.7 | 2.4 | 3.7 | 1.3 | 1.5 | 2.7 | Nov |
| 6.8 | 4.5 | 2.3 | 6.6 | 0.8 | 1.7 | 1.6 | 1.4 | 2.5 | 4.9 | 3.0 | 3.7 | 1.2 | 1.4 | 3.0 | Dec |
| Annual Rate of Change - 2007 | | | | | | | | | | | | | | | |
| 7.1 | 4.0 | 2.3 | 8.4 | 1.2 | 1.2 | 1.7 | 1.6 | 2.6 | 4.1 | 2.8 | 2.2 | 1.3 | 1.6 | 2.7 | Jan |
| 7.2 | 4.4 | 1.8 | 9.0 | 0.8 | 1.4 | 1.7 | 1.9 | 2.3 | 3.9 | 2.3 | 2.0 | 1.2 | 1.7 | 2.8 | Feb |
| 8.5 | 4.8 | 2.4 | 9.0 | 0.5 | 1.9 | 1.9 | 2.4 | 2.4 | 3.7 | 2.6 | 2.1 | 1.6 | 1.6 | 3.1 | Mar |
| 8.8 | 4.9 | 2.5 | 8.7 | -1.1 | 1.9 | 1.8 | 2.2 | 2.8 | 3.8 | 2.9 | 2.0 | 1.5 | 1.6 | 2.8 | Apr |
| 7.8 | 5.0 | 2.3 | 8.4 | -1.0 | 2.0 | 1.9r | 2.3 | 2.4 | 3.9 | 3.1 | 1.5 | 1.3 | 1.2 | 2.5 | May |
| 8.9 | 5.0 | 2.3 | 8.5 | -0.6 | 1.8p | 1.9p | 2.6 | 2.4 | 3.9 | 3.8 | 1.5 | 1.4 | 1.3 | : | Jun |
| | | | | | | | | | | | | | | | Jul |
| | | | | | | | | | | | | | | | Aug |
| | | | | | | | | | | | | | | | Sep |
| | | | | | | | | | | | | | | | Oct |
| | | | | | | | | | | | | | | | Nov |
| | | | | | | | | | | | | | | | Dec |

p provisional r revised : not available

TABLE III
HARMONIZED INDICES OF CONSUMER
PRICES
INDEX NUMBERS 2005 = 100

| | EEA | IS | NO | CH** |
|-----------------------------|---------|--------|-------|-------|
| Annual Average Index | | | | |
| 2004 | 97.89 | 98.64 | 98.5 | 98.8 |
| 2005 | 100.00 | 100.00 | 100.0 | 100.0 |
| 2006 | 102.21 | 104.65 | 102.5 | 101.0 |
| Monthly Index - 2005 | | | | |
| Jan | 98.42 | 99.71 | 98.7 | 99.1 |
| Feb | 98.73 | 99.56 | 98.7 | 99.3 |
| Mar | 99.32 | 99.94 | 99.2 | 99.6 |
| Apr | 99.73 | 99.48 | 99.7 | 100.4 |
| May | 100.00 | 99.17 | 100.1 | 100.3 |
| Jun | 100.08 | 99.56 | 100.3 | 100.0 |
| Jul | 100.02 | 99.40 | 99.9 | 99.5 |
| Aug | 100.26 | 99.17 | 100.1 | 99.6 |
| Sep | 100.71 | 100.79 | 100.8 | 100.1 |
| Oct | 100.95 | 101.25 | 100.8 | 100.9 |
| Nov | 100.75 | 100.87 | 100.8 | 100.7 |
| Dec | 101.03 | 101.10 | 100.8 | 100.6 |
| Monthly Index - 2006 | | | | |
| Jan | 100.64 | 101.01 | 100.5 | 100.4 |
| Feb | 100.93 | 100.78 | 101.4 | 100.7 |
| Mar | 101.42 | 101.93 | 101.6 | 100.6 |
| Apr | 102.08 | 102.72 | 102.5 | 101.4 |
| May | 102.43 | 103.92 | 102.6 | 101.6 |
| Jun | 102.53 | 105.27 | 102.4 | 101.6 |
| Jul | 102.43 | 105.71 | 102.2 | 100.9 |
| Aug | 102.60 | 106.17 | 102.2 | 101.1 |
| Sep | 102.66 | 106.95 | 103.8 | 100.9 |
| Oct | 102.75 | 107.14 | 103.8 | 101.2 |
| Nov | 102.83 | 107.06 | 103.6 | 101.2 |
| Dec | 103.21 | 107.08 | 103.0 | 101.2 |
| Monthly Index - 2007 | | | | |
| Jan | 102.75 | 107.38 | 101.7 | 100.5 |
| Feb | 103.08 | 107.49 | 102.2 | 100.7 |
| Mar | 103.71 | 106.77 | 102.9 | 100.7 |
| Apr | 104.29 | 107.06 | 103.0 | 101.9 |
| May | 104.57 | 108.09 | 103.2 | 102.1 |
| Jun | 104.65p | 108.47 | 103.1 | 102.2 |
| Jul | | | | |
| Aug | | | | |
| Sep | | | | |
| Oct | | | | |
| Nov | | | | |
| Dec | | | | |

TABLE IV
HARMONIZED INDICES OF CONSUMER
PRICES
RATES OF CHANGE (%)

| EEA | IS | NO | CH** | |
|--------------------------------------|-----|-----|------|---------|
| Annual Average Rate of Change | | | | |
| 2.0 | 2.3 | 0.6 | 0.8 | 2004/12 |
| 2.2 | 1.4 | 1.5 | 1.2 | 2005/12 |
| 2.2 | 4.6 | 2.5 | 1.1 | 2006/12 |
| 2.1p | 5.5 | 1.7 | 0.6 | 2007/6 |
| Annual Rate of Change - 2005 | | | | |
| 2.0 | 2.6 | 1.0 | 1.2 | Jan |
| 2.1 | 2.9 | 0.8 | 1.4 | Feb |
| 2.1 | 2.4 | 0.8 | 1.5 | Mar |
| 2.1 | 1.6 | 1.1 | 1.4 | Apr |
| 2.0 | 0.5 | 1.4 | 1.1 | May |
| 2.0 | 0.4 | 1.6 | 0.6 | Jun |
| 2.1 | 0.5 | 1.3 | 1.2 | Jul |
| 2.2 | 0.4 | 1.8 | 0.9 | Aug |
| 2.5 | 1.6 | 2.1 | 1.4 | Sep |
| 2.4 | 1.5 | 1.8 | 1.3 | Oct |
| 2.2 | 1.1 | 1.8 | 1.0 | Nov |
| 2.1 | 1.0 | 2.0 | 1.0 | Dec |
| Annual Rate of Change - 2006 | | | | |
| 2.3 | 1.3 | 1.8 | 1.3 | Jan |
| 2.2 | 1.2 | 2.7 | 1.4 | Feb |
| 2.1 | 2.0 | 2.4 | 1.0 | Mar |
| 2.4 | 3.3 | 2.8 | 1.1 | Apr |
| 2.4 | 4.8 | 2.5 | 1.4 | May |
| 2.4 | 5.7 | 2.1 | 1.6 | Jun |
| 2.4 | 6.3 | 2.3 | 1.4 | Jul |
| 2.3 | 7.1 | 2.1 | 1.5 | Aug |
| 1.9 | 6.1 | 3.0 | 0.8 | Sep |
| 1.8 | 5.8 | 3.0 | 0.3 | Oct |
| 2.1 | 6.1 | 2.8 | 0.5 | Nov |
| 2.2 | 5.9 | 2.2 | 0.6 | Dec |
| Annual Rate of Change - 2007 | | | | |
| 2.1 | 6.3 | 1.2 | 0.1 | Jan |
| 2.1 | 6.7 | 0.8 | 0.0 | Feb |
| 2.3 | 4.7 | 1.3 | 0.2 | Mar |
| 2.2 | 4.2 | 0.5 | 0.5 | Apr |
| 2.1 | 4.0 | 0.6 | 0.5 | May |
| 2.1p | 3.0 | 0.7 | 0.6 | Jun |
| | | | | Jul |
| | | | | Aug |
| | | | | Sep |
| | | | | Oct |
| | | | | Nov |
| | | | | Dec |

p provisional ** national CPI

TABLE V

MAIN CATEGORIES OF HARMONIZED INDICES OF CONSUMER PRICES

June 2007 / June 2006

ANNUAL RATES OF CHANGE (%)

| | 00. | 01. | 02. | 03. | 04. | 05. | 06. | 07. | 08. | 09. | 10. | 11. | 12. |
|------------------|------|------|------|------|------|------|------|-------|-------|-------|------|------|------|
| Euro area | 1.9p | 2.1p | 3.6p | 1.3p | 2.3p | 1.7p | 1.7p | 1.7p | -1.7p | 0.1p | 9.2p | 3.2p | 2.3p |
| EICP | 2.1p | 2.7p | 3.8p | 0.2p | 3.1p | 1.6p | 2.2p | 1.9p | -1.9p | -0.1p | 9.4p | 3.4p | 2.2p |
| BE | 1.3 | 3.4 | 5.5 | 0.6 | -0.2 | 1.7 | -0.5 | 0.1 | -3.3 | 0.5 | 2.4 | 2.1 | 4.0 |
| BG | 5.3 | 7.6 | -3.1 | 6.3 | 4.0 | 4.3 | 5.1 | 6.1 | 0.0 | 3.5 | 6.1 | 8.4 | 10.6 |
| CZ | 2.6 | 2.4 | 9.8 | 0.1 | 3.1 | -0.1 | 5.0 | -0.3 | 2.1 | 1.1 | 2.4 | 3.8 | 2.1 |
| DK | 1.3 | 2.7 | 1.2 | -0.1 | 1.5 | 1.0 | 1.6 | 1.4 | 0.5 | -0.9 | 4.1 | 2.5 | 1.2 |
| DE | 2.0 | 1.8 | 3.9 | 0.8 | 1.7 | 1.2 | 1.4 | 2.3 | 0.3 | 0.5 | 28.5 | 2.5 | 2.2 |
| EE | 6.0 | 7.3 | 4.3 | 3.7 | 12.7 | 4.3 | 7.8 | 2.4 | -0.4 | 3.1 | 5.2 | 8.9 | 5.8 |
| IE | 2.8 | 2.6 | 5.7 | -3.7 | 8.0 | -2.1 | 2.8 | 1.8 | -0.1 | 1.4 | 4.8 | 4.3 | 2.4 |
| EL | 2.6 | 1.5 | 6.8 | 3.1 | 1.2 | 2.1 | 3.7 | 2.1 | -0.1 | 3.6 | 3.7 | 3.9 | 2.7 |
| ES | 2.5 | 2.8 | 6.1 | 1.1 | 3.1 | 2.6 | -2.2 | 1.3 | 0.7 | -0.7 | 4.6 | 5.0 | 3.3 |
| FR | 1.3 | 1.3 | 0.6 | 0.8 | 2.4 | 1.1 | 1.1 | 1.7 | -0.4 | -1.6 | 3.4 | 2.9 | 2.0 |
| IT | 1.9 | 2.6 | 4.5 | 1.5 | 2.7 | 2.7 | 3.8 | 1.9 | -9.6 | 1.4 | 2.3 | 2.7 | 2.2 |
| CY | 1.7 | 3.7 | 0.4 | -0.6 | -0.3 | 0.7 | 4.4 | 0.0 | -1.0 | -0.1 | 4.9 | 4.0 | 1.5 |
| LV | 8.9 | 12.6 | 10.3 | 1.2 | 14.4 | 5.2 | 6.0 | 6.8 | -7.2 | 4.1 | 11.9 | 13.1 | 11.7 |
| LT | 5.0 | 9.0 | 5.5 | -5.2 | 11.4 | 1.7 | 6.1 | 2.6 | -6.0 | 0.1 | 2.9 | 7.4 | 5.4 |
| LU | 2.3 | 2.9 | 3.8 | 0.4 | 2.3 | 2.2 | 0.8 | 1.6 | -1.9 | 0.6 | 2.3 | 3.1 | 3.3 |
| HU | 8.5 | 10.5 | 7.2 | 1.5 | 22.5 | 1.9 | 20.7 | 3.4 | -4.1 | 3.6 | 6.9 | 9.4 | 5.3 |
| MT | -0.6 | 2.5 | 0.6 | -4.2 | -1.8 | 0.4 | 2.7 | -2.5 | 0.3 | 0.5 | 4.1 | -2.3 | 0.3 |
| NL | 1.8p | 1.1p | 1.6p | 3.4p | 4.1p | 1.2p | 1.4p | 1.9p | -3.0p | -0.1p | 0.8p | 3.5p | 1.6p |
| AT | 1.9p | 3.4p | 3.0p | 2.2p | 4.2p | 1.2p | 1.9p | -1.2p | 6.1p | 0.4p | 1.5p | 2.2p | 2.2p |
| PL | 2.6 | 4.6 | 2.5 | -7.2 | 4.7 | 1.1 | 1.8 | 3.5 | 0.5 | -0.7 | 1.0 | 3.2 | 1.7 |
| PT | 2.4 | 1.4 | 6.4 | 2.9 | 3.6 | 1.8 | 9.3 | 1.5 | -1.8 | 0.1 | 3.5 | 2.4 | 2.3 |
| RO | 3.9 | 0.9 | 13.2 | 3.3 | 11.6 | 2.0 | -1.5 | 1.4 | -4.6 | 2.0 | 5.6 | 4.9 | 4.5 |
| SI | 3.8 | 6.4 | 6.3 | 1.8 | 2.9 | 5.1 | 2.0 | 2.0 | 1.4 | 2.4 | 1.8 | 6.3 | 3.6 |
| SK | 1.5 | 1.8 | 6.2 | 0.9 | 2.7 | 0.3 | -1.1 | -3.1 | -1.9 | 1.1 | 3.7 | 2.8 | 2.4 |
| FI | 1.4 | 1.1 | 1.0 | 0.3 | 2.4 | 1.5 | -0.6 | 0.2 | 9.2 | 0.1 | 3.5 | 2.4 | 2.7 |
| SE | 1.3 | 1.1 | 7.1 | 4.4 | 0.7 | 1.4 | 2.2 | 0.0 | -3.3 | 0.2 | 3.4 | 3.3 | 2.2 |
| UK | : | : | : | : | : | : | : | : | : | : | : | : | : |
| EEA | 2.1p | 2.7p | 3.8p | 0.2p | 3.0p | 1.6p | 2.2p | 1.9p | -1.9p | 0.0p | 9.4p | 3.4p | 2.2p |
| IS | 3.0 | -3.3 | 3.8 | 1.7 | 7.1 | 4.9 | 2.5 | 1.9 | 1.0 | 2.2 | 7.0 | 7.0 | 7.5 |
| NO | 0.7 | 2.3 | 1.5 | -4.8 | -2.2 | 1.9 | 2.0 | 1.6 | -1.9 | 0.8 | 2.4 | 4.1 | 2.4 |

p provisional : not available

COICOP/HICP Code

- | | | | |
|------------|---|------------|----------------------------------|
| 00. | HICP (all-items index) | 06. | Health |
| 01. | Food and non-alcoholic beverages | 07. | Transports |
| 02. | Alcoholic beverages and tobacco | 08. | Communications |
| 03. | Clothing and footwear | 09. | Recreation and culture |
| 04. | Housing, water, electricity, gas and other fuels | 10. | Education |
| 05. | Furnishings, household equipment and routine maintenance of the house | 11. | Restaurants and hotels |
| | | 12. | Miscellaneous goods and services |

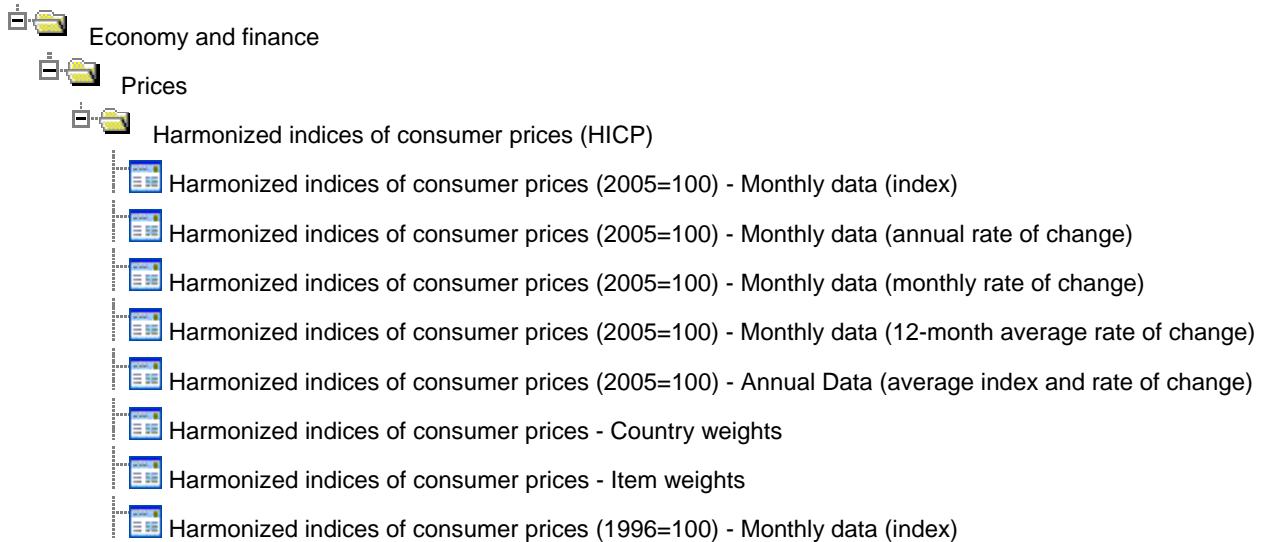
Further information:

Dedicated HICP section on the Eurostat website:

http://epp.eurostat.ec.europa.eu/pls/portal/url/page/PGP_DS_HICP

Data:

[Eurostat website / Economy and finance / Data](#)



Journalists can contact the media support service:

Bech Building Office A4/125
L - 2920 Luxembourg

Tel. (352) 4301 33408
Fax (352) 4301 35349

E-mail: eurostat-mediasupport@ec.europa.eu

European Statistical Data Support:

Eurostat set up with the members of the 'European statistical system' a network of support centres, which will exist in nearly all Member States as well as in some EFTA countries.

Their mission is to provide help and guidance to Internet users of European statistical data.

Contact details for this support network can be found on our Internet site: <http://ec.europa.eu/eurostat/>

A list of worldwide sales outlets is available at the:

Office for Official Publications of the European Communities.

2, rue Mercier
L - 2985 Luxembourg

URL: <http://publications.europa.eu>
E-mail: info-info-opoce@ec.europa.eu
