

# Harmonized Indices of Consumer Prices

## April 2007

Euro area annual inflation, as measured by the Monetary Union Index of Consumer Prices (MUICP)<sup>1</sup>, was 1.9% in April 2007, unchanged compared with March. A year earlier the rate was 2.5%.

EU annual inflation, as measured by the European Index of Consumer Prices (EICP)<sup>2</sup>, was 2.2% in April 2007, down from 2.3% in March. A year earlier the rate was 2.3%.

EEA annual inflation, as measured by the European Economic Area Index of Consumer Prices (EEAICP), was 2.2% in April 2007.

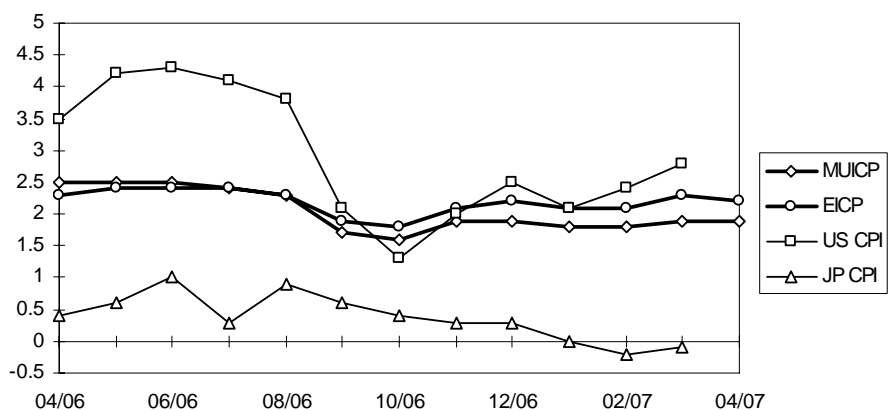
In April 2007, the highest annual inflation rates in the EU Member States were recorded in Latvia (8.8%), Hungary (8.7%) and Estonia (5.6%), and the lowest rates were observed in Malta (-1.1%), France (1.3%) and Finland (1.5%).

For the USA<sup>3</sup> and Japan<sup>3</sup> no April data was available in time for publication.

The annual inflation rates for the euro area, the EU and the latest available rates for the USA and Japan are shown in the graph below.

Methodological notes can be accessed via the Eurostat internet site under Special topics/HICP/Methodology – [Short guide for users](#) (issue date: 17/05/2004).

Annual Rate of Change (%)



- The MUICP is the official euro area aggregate. Its country coverage changes in line with the addition of new Member States and integrates them using a chain index formula. Since January 2007 the euro area includes: Belgium, Germany, Ireland, Greece, Spain, France, Italy, Luxembourg, the Netherlands, Austria, Portugal, Slovenia and Finland.*
- The EICP is the official EU aggregate. Its country coverage changes in line with the addition of new EU Member States and integrates them using a chain index formula.*
- For the USA and Japan the national CPIs are given, which are not strictly comparable with the HICPs.*

## Statistics in focus

### ECONOMY AND FINANCE

65/2007

#### Prices

Author

Christine WIRTZ

## Contents

Price Indices.....	2
Rates of Change.....	4
EEA Index Numbers and Rates of Change.....	6
COICOP/HICP Main categories.....	7



TABLE I  
HARMONIZED INDICES OF CONSUMER PRICES  
INDEX NUMBERS 2005 = 100

	Euro area	EICP	BE	BG	CZ	DK	DE	EE	IE	EL	ES	FR	IT	CY
Annual Average Index														
2004	97.86	97.88	97.53	94.30	98.4	98.3	98.1	96.05	97.9	96.63	96.73	98.14	97.8	98.00
2005	100.00	100.00	100.00	100.00	100.0	100.0	100.0	100.00	100.0	100.00	100.00	100.00	100.0	100.00
2006	102.18	102.20	102.33	107.42	102.1	101.8	101.8	104.45	102.7	103.31	103.56	101.91	102.2	102.25
Monthly Index - 2005														
Jan	98.31	98.42	96.92	96.93	99.2	98.2	98.6	97.54	97.9	98.70	97.40	98.35	98.1	98.23
Feb	98.65	98.73	99.06	97.77	99.2	98.8	99.0	98.14	98.8	97.03	97.64	99.04	98.0	97.84
Mar	99.32	99.32	99.65	98.25	99.1	99.6	99.3	98.73	99.0	99.50	98.49	99.73	99.2	98.70
Apr	99.75	99.73	99.82	99.40	99.4	100.1	99.3	99.19	99.6	100.30	99.90	99.91	100.0	99.80
May	100.00	100.00	99.99	99.24	99.5	100.0	99.7	99.39	99.8	100.67	100.05	99.91	100.3	100.04
Jun	100.08	100.08	100.33	98.81	100.1	100.2	99.9	100.05	100.1	100.45	100.36	100.08	100.3	100.12
Jul	100.00	100.02	99.31	99.58	100.4	100.0	100.3	100.45	100.0	99.14	99.74	99.91	100.1	98.62
Aug	100.25	100.26	101.10	100.24	100.4	100.1	100.5	100.71	100.5	98.56	100.21	100.34	99.9	99.33
Sep	100.76	100.71	101.10	101.43	100.3	100.9	100.8	101.57	101.2	100.88	100.83	100.77	100.5	100.98
Oct	101.02	100.95	100.93	102.23	101.2	100.9	100.8	101.50	101.2	101.54	101.61	100.77	101.2	102.09
Nov	100.76	100.75	100.85	102.69	100.8	100.5	100.3	101.43	101.0	101.32	101.77	100.51	101.2	102.32
Dec	101.10	101.03	100.93	103.43	100.5	100.6	101.3	101.30	100.8	101.90	102.00	100.69	101.2	101.93
Monthly Index - 2006														
Jan	100.66	100.64	99.60	104.29	101.6	100.2	100.7	102.08	100.3	101.67	101.53	100.60	100.3	100.22
Feb	100.95	100.93	101.88	106.96	101.6	100.9	101.1	102.60	101.5	100.07	101.60	100.99	100.2	100.13
Mar	101.53	101.41	101.81	107.20	101.5	101.4	101.2	102.71	101.8	102.82	102.32	101.44	101.4	101.31
Apr	102.20	102.07	102.38	107.87	101.7	101.9	101.6	103.44	102.3	103.84	103.80	101.89	102.3	102.34
May	102.48	102.42	102.74	108.13	102.3	102.1	101.8	104.00	102.8	103.96	104.17	102.32	102.6	102.54
Jun	102.56	102.53	102.82	107.07	102.4	102.3	101.9	104.48	103.0	103.90	104.33	102.32	102.7	102.75
Jul	102.43	102.43	101.72	107.32	102.8	102.0	102.4	104.94	102.9	103.02	103.76	102.13	102.4	101.42
Aug	102.52	102.60	103.47	107.28	103.0	102.0	102.3	105.70	103.7	101.96	103.99	102.46	102.2	102.04
Sep	102.52	102.65	102.98	106.86	102.5	102.4	101.8	105.45	103.4	104.05	103.79	102.26	102.9	103.25
Oct	102.60	102.74	102.68	107.58	102.0	102.3	101.9	105.34	103.4	104.73	104.22	102.02	103.1	103.81
Nov	102.64	102.82	102.90	108.73	101.8	102.3	101.8	106.15	103.4	104.57	104.47	102.14	103.2	103.70
Dec	103.04	103.21	103.03	109.72	102.0	102.3	102.7	106.45	103.8	105.16	104.77	102.39	103.3	103.43
Monthly Index - 2007														
Jan	102.51	102.75	101.29	111.33	103.0	102.0	102.5	107.18	103.2	104.76	104.01	102.00	102.2	101.66
Feb	102.81	103.09	103.69	111.91	103.3	102.8	103.0	107.34	104.1	103.11	104.09	102.21	102.3	101.36
Mar	103.50	103.71r	103.68	111.94	103.6	103.3	103.2	108.49	104.8	105.66	104.89	102.69	103.5	102.72
Apr	104.15p	104.30p	104.20	112.61	104.4	103.6	103.6	109.26	105.3	106.50	106.38	103.24	104.1	104.01
May														
Jun														
Jul														
Aug														
Sep														
Oct														
Nov														
Dec														

p provisional r revised

TABLE I  
HARMONIZED INDICES OF CONSUMER PRICES  
2005 = 100  
INDEX NUMBERS

LV	LT	LU	HU	MT	NL	AT	PL	PT	RO	SI	SK	FI	SE	UK	
Annual Average Index															
93.55	97.41	96.37	96.63	97.53	98.52	97.94	97.9	97.92	91.68	97.60	97.28	99.24	99.18	98.0	2004
100.00	100.00	100.00	100.00	100.00	100.00	100.00	100.0	100.00	100.00	100.00	100.00	100.00	100.00	100.0	2005
106.57	103.79	102.96	104.03	102.58	101.65	101.69	101.3	103.04	106.60	102.54	104.26	101.28	101.50	102.3	2006
Monthly Index - 2005															
96.39	98.49	96.70	98.14	96.05	98.53	99.15	99.4	98.35	96.33	97.79	99.20	98.84	98.88	98.6	Jan
97.29	98.65	98.32	98.69	96.67	99.34	99.50	99.4	98.27	96.92	98.47	99.31	99.45	99.32	98.8	Feb
97.85	99.21	98.65	99.15	97.14	100.14	99.93	99.5	98.67	97.21	99.48	99.31	99.88	99.58	99.3	Mar
98.89	99.53	99.38	99.88	100.65	100.30	99.76	99.9	99.37	98.97	99.54	99.53	100.15	99.76	99.7	Apr
99.65	99.77	99.86	100.48	101.27	100.22	99.76	100.1	99.92	99.26	99.88	99.63	99.80	99.85	100.0	May
100.27	99.93	99.78	100.76	101.27	99.90	100.02	100.0	99.99	99.56	99.93	100.01	100.06	99.93	100.0	Jun
100.27	99.77	99.70	100.67	101.35	99.58	99.76	100.0	100.38	100.53	100.72	99.69	99.71	99.67	100.1	Jul
100.13	99.85	101.08	100.21	101.66	99.90	99.93	100.0	100.54	100.64	100.22	99.63	100.06	99.93	100.4	Aug
101.66	100.65	101.65	100.39	101.66	100.78	100.55	100.4	100.70	101.23	101.18	99.90	100.67	100.72	100.6	Sep
102.35	101.30	102.46	100.44	102.60	100.78	100.55	100.7	101.09	102.10	101.35	101.24	100.67	100.98	100.7	Oct
102.70	101.38	101.41	100.62	99.79	100.46	100.37	100.5	101.32	103.33	100.78	101.24	100.32	100.63	100.7	Nov
102.56	101.46	101.00	100.58	99.87	100.06	100.72	100.2	101.40	103.90	100.67	101.30	100.41	100.72	101.0	Dec
Monthly Index - 2006															
103.67	101.98	100.63	100.55	98.33	100.28	100.66	100.3	101.01	104.96	100.32	103.23	100.00	100.01	100.5	Jan
104.09	102.03	102.13	100.92	98.93	100.78	100.99	100.3	101.21	105.21	100.70	103.56	100.77	100.37	100.9	Feb
104.29	102.24	102.31	101.51	100.00	101.58	101.26	100.4	102.42	105.43	101.43	103.57	101.08	101.03	101.1	Mar
104.96	102.94	102.81	102.27	104.16	102.06	101.84	101.1	103.01	105.88	102.34	103.90	101.61	101.58	101.7	Apr
106.69	103.39	103.43	103.37	104.83	102.02	101.86	101.6	103.57	106.52	103.27	104.41	101.52	101.78	102.2	May
106.58	103.66	103.70	103.66	104.57	101.68	101.88	101.5	103.52	106.69	102.96	104.55	101.54	101.78	102.5	Jun
107.22	104.18	103.08	103.85	104.96	101.32	101.72	101.4	103.38	106.81	102.66	104.68	101.07	101.44	102.5	Jul
106.96	104.12	104.23	104.91	104.66	101.81	102.03	101.7	103.29	106.74	103.35	104.57	101.37	101.48	102.9	Aug
107.67	103.98	103.65	106.33	104.86	102.30	101.89	101.8	103.71	106.80	103.68	104.36	101.47	101.97	103.0	Sep
108.09	105.02	103.08	106.81	104.30	102.12	101.82	101.8	103.73	107.02	102.91	104.38	101.62	102.17	103.2	Oct
109.15	105.84	103.19	107.04	100.71	102.10	101.95	101.8	103.74	108.19	103.23	104.94	101.62	102.18	103.4	Nov
109.49	106.07	103.28	107.17	100.62	101.75	102.33	101.6	103.93	108.99	103.67	105.01	101.65	102.16	104.0	Dec
Monthly Index - 2007															
111.02	106.09	102.93	109.03	99.49	101.50	102.41	101.9	103.62	109.23	103.12	105.53	101.31	101.64	103.2	Jan
111.63	106.49	104.01	109.99	99.72	102.16	102.72	102.2	103.58	109.28	103.00	105.63	101.95	102.11	103.7	Feb
113.14	107.10	104.72	110.64	100.49	103.47	103.21	102.8	104.88	109.37	104.10	105.70	102.70	102.69	104.2	Mar
114.21	108.02	105.33	111.15	103.04	104.05p	103.62p	103.3	105.85	109.94	105.27	105.99	103.17	103.17	104.5	Apr
															May
															Jun
															Jul
															Aug
															Sep
															Oct
															Nov
															Dec

p provisional

TABLE II  
HARMONIZED INDICES OF CONSUMER PRICES  
RATES OF CHANGE (%)

	Euro area	EICP	BE	BG	CZ	DK	DE	EE	IE	EL	ES	FR	IT	CY
Annual Average Rate of Change														
2004/12	2.1	2.0	1.9	6.1	2.6	0.9	1.8	3.0	2.3	3.0	3.1	2.3	2.3	1.9
2005/12	2.2	2.2	2.5	6.0	1.6	1.7	1.9	4.1	2.2	3.5	3.4	1.9	2.2	2.0
2006/12	2.2	2.2	2.3	7.4	2.1	1.9	1.8	4.4	2.7	3.3	3.6	1.9	2.2	2.2
2007/4	2.0p	2.2p	2.1	6.2	1.9	1.8	1.7	4.7	2.8	3.2	3.0	1.7	2.1	1.9
Annual Rate of Change - 2005														
Jan	1.9	2.0	2.0	3.2	1.5	0.8	1.6	4.2	2.1	4.2	3.1	1.6	2.0	2.8
Feb	2.1	2.1	2.3	3.8	1.4	1.0	1.9	4.6	2.1	3.2	3.3	1.9	2.0	2.4
Mar	2.1	2.1	2.8	4.4	1.1	1.3	1.6	4.8	1.9	2.9	3.4	2.1	2.2	2.4
Apr	2.1	2.1	2.4	5.3	1.4	1.7	1.4	4.7	2.2	3.3	3.5	2.0	2.1	2.7
May	2.0	2.0	2.3	5.1	0.9	1.2	1.6	2.9	2.1	3.2	3.0	1.7	2.3	2.1
Jun	2.1	2.0	2.7	6.5	1.3	1.7	1.8	3.2	1.9	3.2	3.2	1.8	2.1	1.5
Jul	2.2	2.1	2.7	6.0	1.4	1.8	1.8	3.9	2.2	3.9	3.3	1.8	2.1	1.3
Aug	2.2	2.2	2.9	7.2	1.4	2.4	1.9	4.2	2.1	3.6	3.3	2.0	2.1	1.5
Sep	2.6	2.5	3.0	7.5	2.0	2.3	2.5	4.9	2.7	3.8	3.8	2.4	2.2	2.1
Oct	2.5	2.4	2.2	8.2	2.4	1.9	2.3	4.5	2.6	3.7	3.5	2.0	2.6	2.2
Nov	2.3	2.3	2.3	8.0	2.2	1.8	2.2	4.0	2.2	3.4	3.4	1.8	2.4	2.0
Dec	2.2	2.1	2.8	7.4	1.9	2.2	2.1	3.6	1.9	3.5	3.7	1.8	2.1	1.4
Annual Rate of Change - 2006														
Jan	2.4	2.3	2.8	7.6	2.4	2.0	2.1	4.7	2.5	3.0	4.2	2.3	2.2	2.0
Feb	2.3	2.2	2.8	9.4	2.4	2.1	2.1	4.5	2.7	3.1	4.1	2.0	2.2	2.3
Mar	2.2	2.1	2.2	9.1	2.4	1.8	1.9	4.0	2.8	3.3	3.9	1.7	2.2	2.6
Apr	2.5	2.3	2.6	8.5	2.3	1.8	2.3	4.3	2.7	3.5	3.9	2.0	2.3	2.5
May	2.5	2.4	2.8	9.0	2.8	2.1	2.1	4.6	3.0	3.3	4.1	2.4	2.3	2.5
Jun	2.5	2.4	2.5	8.4	2.3	2.1	2.0	4.4	2.9	3.4	4.0	2.2	2.4	2.6
Jul	2.4	2.4	2.4	7.8	2.4	2.0	2.1	4.5	2.9	3.9	4.0	2.2	2.3	2.8
Aug	2.3	2.3	2.3	7.0	2.6	1.9	1.8	5.0	3.2	3.4	3.8	2.1	2.3	2.7
Sep	1.7	1.9	1.9	5.4	2.2	1.5	1.0	3.8	2.2	3.1	2.9	1.5	2.4	2.2
Oct	1.6	1.8	1.7	5.2	0.8	1.4	1.1	3.8	2.2	3.1	2.6	1.2	1.9	1.7
Nov	1.9	2.1	2.0	5.9	1.0	1.8	1.5	4.7	2.4	3.2	2.7	1.6	2.0	1.3
Dec	1.9	2.2	2.1	6.1	1.5	1.7	1.4	5.1	3.0	3.2	2.7	1.7	2.1	1.5
Annual Rate of Change - 2007														
Jan	1.8	2.1	1.7	6.8	1.4	1.8	1.8	5.0	2.9	3.0	2.4	1.4	1.9	1.4
Feb	1.8	2.1	1.8	4.6	1.7	1.9	1.9	4.6	2.6	3.0	2.5	1.2	2.1	1.2
Mar	1.9	2.3r	1.8	4.4	2.1	1.9	2.0	5.6	2.9	2.8	2.5	1.2	2.1	1.4
Apr	1.9p	2.2p	1.8	4.4	2.7	1.7	2.0	5.6	2.9	2.6	2.5	1.3	1.8	1.6
May														
Jun														
Jul														
Aug														
Sep														
Oct														
Nov														
Dec														

p provisional r revised

TABLE II  
HARMONIZED INDICES OF CONSUMER PRICES  
RATES OF CHANGE (%)

LV	LT	LU	HU	MT	NL	AT	PL	PT	RO	SI	SK	FI	SE	UK	
Annual Average Rate of Change															
6.2	1.2	3.2	6.8	2.7	1.4	2.0	3.6	2.5	11.9	3.7	7.5	0.1	1.0	1.3	2004/12
6.9	2.7	3.8	3.5	2.5	1.5	2.1	2.2	2.1	9.1	2.5	2.8	0.8	0.8	2.1	2005/12
6.6	3.8	3.0	4.0	2.6	1.7	1.7	1.3	3.0	6.6	2.5	4.3	1.3	1.5	2.3	2006/12
7.0	4.2	2.5	6.2	1.8	1.6p	1.7p	1.6	2.8	5.2	2.6	3.5	1.3	1.6	2.6	2007/4
Annual Rate of Change - 2005															
6.7	2.8	2.9	4.0	1.9	1.2	2.4	3.8	2.0	8.9	2.3	3.2	-0.2	0.5	1.6	Jan
7.0	3.2	3.2	3.4	2.5	1.5	2.3	3.6	2.1	8.9	2.8	2.7	0.0	1.2	1.7	Feb
6.6	3.2	3.5	3.3	2.6	1.5	2.4	3.4	2.3	8.7	3.3	2.4	0.9	0.5	1.9	Mar
7.1	3.2	3.7	3.8	2.0	1.3	2.3	3.1	2.0	10.0	2.7	2.7	1.2	0.4	1.9	Apr
6.5	1.9	3.7	3.5	2.4	1.0	2.0	2.1	1.8	10.0	2.1	2.4	0.6	0.2	1.9	May
6.6	2.0	3.2	3.7	2.1	1.5	2.0	1.4	0.6	9.7	1.7	2.6	1.0	0.8	2.0	Jun
6.3	1.9	4.0	3.6	1.7	1.5	2.1	1.5	1.9	9.4	2.0	2.1	0.9	0.7	2.3	Jul
6.3	2.3	4.3	3.5	2.5	1.6	1.9	1.8	2.5	8.9	1.8	2.1	1.0	1.1	2.4	Aug
7.4	2.5	4.7	3.6	2.0	1.7	2.6	1.9	2.7	8.5	3.2	2.3	1.1	1.1	2.5	Sep
7.7	3.0	5.0	3.1	3.0	1.5	2.0	1.6	2.6	8.2	3.2	3.5	0.8	0.9	2.3	Oct
7.6	2.9	3.6	3.3	4.3	1.6	1.7	1.1	2.5	8.7	2.1	3.6	1.0	1.2	2.1	Nov
7.1	3.0	3.4	3.3	3.4	2.0	1.6	0.8	2.5	8.7	2.4	3.9	1.1	1.3	1.9	Dec
Annual Rate of Change - 2006															
7.6	3.5	4.1	2.5	2.4	1.8	1.5	0.9	2.7	9.0	2.6	4.1	1.2	1.1	1.9	Jan
7.0	3.4	3.9	2.3	2.3	1.4	1.5	0.9	3.0	8.6	2.3	4.3	1.3	1.1	2.0	Feb
6.6	3.1	3.7	2.4	2.9	1.4	1.3	0.9	3.8	8.5	2.0	4.3	1.2	1.5	1.8	Mar
6.1	3.4	3.5	2.4	3.5	1.8	2.1	1.2	3.7	7.0	2.8	4.4	1.5	1.8	2.0	Apr
7.1	3.6	3.6	2.9	3.5	1.8	2.1	1.5	3.7	7.3	3.4	4.8	1.7	1.9	2.2	May
6.3	3.7	3.9	2.9	3.3	1.8	1.9	1.5	3.5	7.2	3.0	4.5	1.5	1.9	2.5	Jun
6.9	4.4	3.4	3.2	3.6	1.7	2.0	1.4	3.0	6.2	1.9	5.0	1.4	1.8	2.4	Jul
6.8	4.3	3.1	4.7	3.0	1.9	2.1	1.7	2.7	6.1	3.1	5.0	1.3	1.6	2.5	Aug
5.9	3.3	2.0	5.9	3.1	1.5	1.3	1.4	3.0	5.5	2.5	4.5	0.8	1.2	2.4	Sep
5.6	3.7	0.6	6.3	1.7	1.3	1.3	1.1	2.6	4.8	1.5	3.1	0.9	1.2	2.4	Oct
6.3	4.4	1.8	6.4	0.9	1.6	1.6	1.3	2.4	4.7	2.4	3.7	1.3	1.5	2.7	Nov
6.8	4.5	2.3	6.6	0.8	1.7	1.6	1.4	2.5	4.9	3.0	3.7	1.2	1.4	3.0	Dec
Annual Rate of Change - 2007															
7.1	4.0	2.3	8.4	1.2	1.2	1.7	1.6	2.6	4.1	2.8	2.2	1.3	1.6	2.7	Jan
7.2	4.4	1.8	9.0	0.8	1.4	1.7	1.9	2.3	3.9	2.3	2.0	1.2	1.7	2.8	Feb
8.5	4.8	2.4	9.0	0.5	1.9	1.9	2.4	2.4	3.7	2.6	2.1	1.6	1.6	3.1	Mar
8.8	4.9	2.5	8.7	-1.1	1.9p	1.7p	2.2	2.8	3.8	2.9	2.0	1.5	1.6	2.8	Apr
															May
															Jun
															Jul
															Aug
															Sep
															Oct
															Nov
															Dec

p provisional

TABLE III  
HARMONIZED INDICES OF CONSUMER  
PRICES  
INDEX NUMBERS 2005 = 100

	EEA	IS	NO	CH**
Annual Average Index				
2004	97.89	98.64	98.5	98.8
2005	100.00	100.00	100.0	100.0
2006	102.21	104.65	102.5	101.0
Monthly Index - 2005				
Jan	98.42	99.71	98.7	99.1
Feb	98.73	99.56	98.7	99.3
Mar	99.32	99.94	99.2	99.6
Apr	99.73	99.48	99.7	100.4
May	100.00	99.17	100.1	100.3
Jun	100.08	99.56	100.3	100.0
Jul	100.02	99.40	99.9	99.5
Aug	100.26	99.17	100.1	99.6
Sep	100.71	100.79	100.8	100.1
Oct	100.95	101.25	100.8	100.9
Nov	100.75	100.87	100.8	100.7
Dec	101.03	101.10	100.8	100.6
Monthly Index - 2006				
Jan	100.64	101.01	100.5	100.4
Feb	100.93	100.78	101.4	100.7
Mar	101.42	101.93	101.6	100.6
Apr	102.08	102.72	102.5	101.4
May	102.43	103.92	102.6	101.6
Jun	102.53	105.27	102.4	101.6
Jul	102.43	105.71	102.2	100.9
Aug	102.60	106.17	102.2	101.1
Sep	102.66	106.95	103.8	100.9
Oct	102.75	107.14	103.8	101.2
Nov	102.83	107.06	103.6	101.2
Dec	103.21	107.08	103.0	101.2
Monthly Index - 2007				
Jan	102.75	107.38	101.7	100.5
Feb	103.08	107.49	102.2	100.7
Mar	103.71r	106.77	102.9	100.7
Apr	104.29p	107.06	103.0	101.9
May				
Jun				
Jul				
Aug				
Sep				
Oct				
Nov				
Dec				

TABLE IV  
HARMONIZED INDICES OF CONSUMER  
PRICES  
RATES OF CHANGE (%)

	EEA	IS	NO	CH**	
Annual Average Rate of Change					
2.0	2.3	0.6	0.8	2004/12	
2.2	1.4	1.5	1.2	2005/12	
2.2	4.6	2.5	1.1	2006/12	
2.2p	5.8	2.0	0.7	2007/4	
Annual Rate of Change - 2005					
2.0	2.6	1.0	1.2	Jan	
2.1	2.9	0.8	1.4	Feb	
2.1	2.4	0.8	1.5	Mar	
2.1	1.6	1.1	1.4	Apr	
2.0	0.5	1.4	1.1	May	
2.0	0.4	1.6	0.6	Jun	
2.1	0.5	1.3	1.2	Jul	
2.2	0.4	1.8	0.9	Aug	
2.5	1.6	2.1	1.4	Sep	
2.4	1.5	1.8	1.3	Oct	
2.2	1.1	1.8	1.0	Nov	
2.1	1.0	2.0	1.0	Dec	
Annual Rate of Change - 2006					
2.3	1.3	1.8	1.3	Jan	
2.2	1.2	2.7	1.4	Feb	
2.1	2.0	2.4	1.0	Mar	
2.4	3.3	2.8	1.1	Apr	
2.4	4.8	2.5	1.4	May	
2.4	5.7	2.1	1.6	Jun	
2.4	6.3	2.3	1.4	Jul	
2.3	7.1	2.1	1.5	Aug	
1.9	6.1	3.0	0.8	Sep	
1.8	5.8	3.0	0.3	Oct	
2.1	6.1	2.8	0.5	Nov	
2.2	5.9	2.2	0.6	Dec	
Annual Rate of Change - 2007					
2.1	6.3	1.2	0.1	Jan	
2.1	6.7	0.8	0.0	Feb	
2.3r	4.7	1.3	0.2	Mar	
2.2p	4.2	0.5	0.5	Apr	
				May	
				Jun	
				Jul	
				Aug	
				Sep	
				Oct	
				Nov	
				Dec	

p provisional r revised \*\* national CPI

TABLE V  
MAIN CATEGORIES OF HARMONIZED INDICES OF CONSUMER PRICES  
April 2007 / April 2006 ANNUAL RATES OF CHANGE (%)

	00.	01.	02.	03.	04.	05.	06.	07.	08.	09.	10.	11.	12.
Euro area	1.9p	2.5p	3.7p	1.4p	2.5p	1.4p	2.2p	1.4p	-2.2p	0.0p	9.2p	3.1p	2.3p
EICP	2.2p	3.3p	4.0p	0.4p	3.5p	1.5p	2.6p	1.4p	-2.2p	-0.2p	9.5p	3.4p	2.4p
BE	1.8	4.8	5.1	0.5	0.9	1.6	0.2	0.1	-0.3	0.1	2.4	2.3	4.2
BG	4.4	4.5	-3.2	5.9	3.6	4.0	5.2	5.1	0.0	4.9	5.9	7.7	11.1
CZ	2.7	4.2	6.7	-0.6	2.9	-0.4	6.0	-1.0	5.5	0.7	2.3	3.6	2.2
DK	1.7	5.1	2.9	-0.6	1.5	1.8	1.8	1.3	0.0	-0.7	4.4	2.5	0.6
DE	2.0	2.7	3.9	1.0	1.9	0.9	1.3	2.4	-0.3	-0.1	28.6	2.4	2.3
EE	5.6	8.7	4.4	2.8	14.0	4.1	8.1	0.1	-1.9	3.3	4.9	7.6	3.1
IE	2.9	1.6	5.6	-3.9	7.9	-1.9	3.0	1.8	0.0	1.7	5.2	5.2	2.4
EL	2.6	0.8	10.8	3.2	1.3	2.2	3.5	1.1	0.8	3.5	3.7	3.4	2.7
ES	2.5	3.3	6.3	1.0	3.2	2.6	-2.1	0.6	0.3	-0.4	4.5	5.0	3.7
FR	1.3	1.2	0.5	0.6	2.6	0.9	3.2	1.6	-1.2	-1.7	3.5	2.6	2.0
IT	1.8	2.8	4.5	1.6	2.3	2.0	3.8	1.1	-9.9	1.5	2.3	2.5	2.3
CY	1.6	6.0	3.0	-0.9	-2.2	0.0	4.9	-1.9	-1.0	0.1	4.9	3.6	1.7
LV	8.8	12.2	8.6	1.5	14.3	4.6	6.3	7.5	-5.0	3.6	11.8	13.0	11.0
LT	4.9	10.1	4.7	-4.5	10.7	1.8	7.0	0.2	-3.4	0.5	2.8	6.4	4.1
LU	2.5	2.7	5.7	0.5	2.8	2.0	0.6	0.9	-2.7	1.2	2.3	3.3	3.6
HU	8.7	12.6	7.4	1.4	22.4	2.4	20.3	2.5	-5.8	3.3	6.9	9.0	5.8
MT	-1.1	0.7	0.7	-3.3	-2.3	0.7	1.8	-1.9	0.4	0.5	4.1	-4.1	0.7
NL	1.9p	1.4p	1.8p	4.6p	4.2p	0.9p	1.6p	1.0p	-3.8p	1.2p	0.8p	3.5p	1.2p
AT	1.7p	4.1p	2.7p	2.3p	4.8p	0.6p	2.3p	-1.7p	5.3p	-0.9p	1.5p	1.8p	2.2p
PL	2.2	4.5	1.9	-7.2	3.9	0.8	1.7	3.0	0.5	-1.4	1.1	2.9	1.7
PT	2.8	3.5	6.1	1.4	3.6	1.8	10.5	1.2	-2.1	0.2	3.5	2.7	2.9
RO	3.8	-0.1	23.6	3.3	9.6	2.0	-1.3	0.9	-1.2	2.6	6.1	5.4	4.8
SI	2.9	6.1	6.2	-1.5	2.0	4.1	1.7	0.7	0.1	0.8	-0.3	6.7	3.4
SK	2.0	4.2	5.6	0.8	2.6	0.5	1.9	-2.6	-2.2	1.3	3.9	2.8	2.6
FI	1.5	2.9	1.0	0.3	2.4	1.6	-0.7	-0.5	8.0	0.1	3.5	2.3	2.7
SE	1.6	2.8	7.2	1.7	2.0	0.3	2.3	-0.1	-4.2	0.3	4.8	2.6	2.4
UK	2.8	6.0	4.5	-2.8	7.9	2.2	3.2	1.5	-3.7	-0.8	14.0	3.8	2.4
EEA	2.2p	3.3p	4.0p	0.4p	3.4p	1.5p	2.6p	1.4p	-2.2p	-0.1p	9.4p	3.4p	2.4p
IS	4.2	-1.2	4.7	2.8	9.3	5.4	3.6	3.4	1.2	4.3	6.8	5.9	7.6
NO	0.5	2.3	2.0	-4.7	-3.6	1.8	2.4	1.5	0.2	0.9	2.4	4.0	2.4

p provisional

#### COICOP/HICP Code

00.	HICP (all-items index)	06.	Health
01.	Food and non-alcoholic beverages	07.	Transports
02.	Alcoholic beverages and tobacco	08.	Communications
03.	Clothing and footwear	09.	Recreation and culture
04.	Housing, water, electricity, gas and other fuels	10.	Education
05.	Furnishings, household equipment and routine maintenance of the house	11.	Restaurants and hotels
		12.	Miscellaneous goods and services

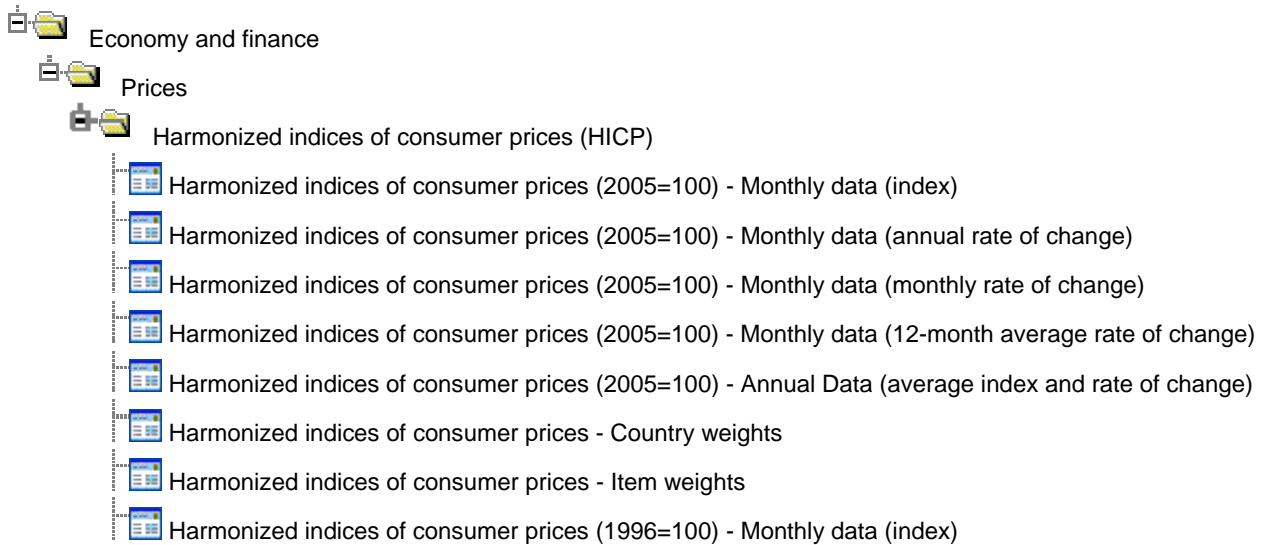
## Further information:

Dedicated HICP section on the Eurostat website:

[http://epp.eurostat.ec.europa.eu/pls/portal/url/page/PGP\\_DS\\_HICP](http://epp.eurostat.ec.europa.eu/pls/portal/url/page/PGP_DS_HICP)

Data:

[Eurostat website / Economy and finance / Data](#)



---

Journalists can contact the media support service:

Bech Building Office A4/125  
L - 2920 Luxembourg

Tel. (352) 4301 33408  
Fax (352) 4301 35349

E-mail: [eurostat-mediasupport@ec.europa.eu](mailto:eurostat-mediasupport@ec.europa.eu)

European Statistical Data Support:

Eurostat set up with the members of the 'European statistical system' a network of support centres, which will exist in nearly all Member States as well as in some EFTA countries.

Their mission is to provide help and guidance to Internet users of European statistical data.

Contact details for this support network can be found on our Internet site: <http://ec.europa.eu/eurostat/>

---

A list of worldwide sales outlets is available at the:

Office for Official Publications of the European Communities.

2, rue Mercier  
L - 2985 Luxembourg

URL: <http://publications.europa.eu>

E-mail: [info-info-opoce@ec.europa.eu](mailto:info-info-opoce@ec.europa.eu)

---