

| | |
|---|---|
| Price Indices..... | 2 |
| Rates of Change..... | 4 |
| EEA Index Numbers and Rates of Change..... | 6 |
| COICOP/HICP Main categories..... | 7 |

Harmonized Indices of Consumer Prices May 2006

Euro area¹ annual inflation, as measured by the Monetary Union Index of Consumer Prices (MUICP), was 2.5% in May 2006, up from 2.4% in April 2006. A year earlier the rate was 2.0%.

EU annual inflation, as measured by the European Index of Consumer Prices (EICP)², was 2.4% in May 2006, up from 2.3% in April 2006. A year earlier the rate was 2.0%.

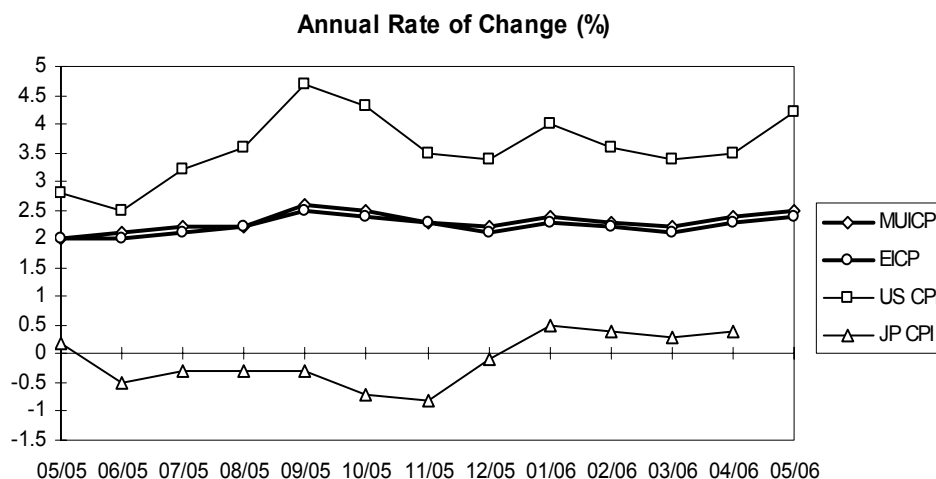
EEA annual inflation, as measured by the European Economic Area Index of Consumer Prices (EEAICP), was 2.4% in May 2006.

In May 2006, the highest annual inflation rates in EU Member States were recorded in **Latvia** (7.1%), **Slovakia** (4.8%), **Estonia** (4.6%) and **Spain** (4.1%), and the lowest rates were observed in **Poland** (1.5%), **Finland** (1.7%), the **Netherlands** (1.8%) and **Sweden** (1.9%).

For the **USA**³ the annual inflation rate was 4.2% in May 2006, up from 3.5% in April. For **Japan**³ no May data was available in time for publication.

The annual inflation rates for the **euro area**¹, the **EU** and the latest available rates for the **USA**³ and **Japan**³ are shown in the graph below.

Methodological notes can be accessed via the Eurostat internet site under Publications/Methods and nomenclatures/Harmonized Indices of Consumer Prices – [Short guide for users](#) (issue date: 17/05/2004).



1 The euro area comprises: Belgium, Germany, Greece, Spain, France, Ireland, Italy, Luxembourg, the Netherlands, Austria, Portugal and Finland.

2 The EICP (EICP='European Index of Consumer Prices' as defined in Council Regulation (EC) No 2494/95 of 23 October 1995) is the official EU aggregate. It covers 15 Member States until April 2004 and 25 Member States starting from May 2004. The ten new Member States are integrated into the EICP starting from May 2004 using a chain index formula.

3 For the USA and Japan the national CPIs are given, which are not strictly comparable with the HICPs.



TABLE I
HARMONIZED INDICES OF CONSUMER PRICES
INDEX NUMBERS
2005 = 100

| | Euro area | EICP | BE | CZ | DK | DE | EE | EL | ES | FR | IE | IT | CY |
|-----------------------------|-----------|---------|--------|-------|-------|-------|--------|--------|--------|--------|-------|-------|--------|
| Annual Average Index | | | | | | | | | | | | | |
| 2003 | 95.81 | 95.95 | 95.75 | 96.0 | 97.5 | 96.4 | 93.22 | 93.79 | 93.86 | 95.89 | 95.7 | 95.7 | 96.18 |
| 2004 | 97.86 | 97.88 | 97.53 | 98.4 | 98.3 | 98.1 | 96.05 | 96.63 | 96.73 | 98.14 | 97.9 | 97.8 | 98.00 |
| 2005 | 100.00 | 100.00 | 100.00 | 100.0 | 100.0 | 100.0 | 100.00 | 100.00 | 100.00 | 100.00 | 100.0 | 100.0 | 100.00 |
| Monthly Index - 2004 | | | | | | | | | | | | | |
| Jan | 96.45 | 96.51 | 95.05 | 97.7 | 97.4 | 97.0 | 93.65 | 94.71 | 94.44 | 96.79 | 95.9 | 96.2 | 95.55 |
| Feb | 96.62 | 96.69 | 96.84 | 97.8 | 97.8 | 97.2 | 93.85 | 94.05 | 94.52 | 97.22 | 96.8 | 96.1 | 95.55 |
| Mar | 97.29 | 97.28 | 96.92 | 98.0 | 98.3 | 97.7 | 94.18 | 96.74 | 95.22 | 97.65 | 97.2 | 97.1 | 96.42 |
| Apr | 97.72 | 97.69 | 97.44 | 98.0 | 98.4 | 97.9 | 94.77 | 97.10 | 96.55 | 97.91 | 97.5 | 97.9 | 97.13 |
| May | 98.05 | 98.08 | 97.78 | 98.6 | 98.8 | 98.1 | 96.62 | 97.54 | 97.09 | 98.26 | 97.7 | 98.0 | 97.99 |
| Jun | 98.05 | 98.09 | 97.69 | 98.8 | 98.5 | 98.1 | 96.95 | 97.32 | 97.25 | 98.35 | 98.2 | 98.2 | 98.62 |
| Jul | 97.88 | 97.92 | 96.67 | 99.0 | 98.2 | 98.5 | 96.69 | 95.43 | 96.55 | 98.17 | 97.8 | 98.0 | 97.36 |
| Aug | 98.05 | 98.06 | 98.29 | 99.0 | 97.8 | 98.6 | 96.62 | 95.14 | 97.01 | 98.35 | 98.4 | 97.8 | 97.84 |
| Sep | 98.22 | 98.23 | 98.20 | 98.3 | 98.6 | 98.3 | 96.82 | 97.18 | 97.17 | 98.43 | 98.5 | 98.3 | 98.86 |
| Oct | 98.56 | 98.57 | 98.71 | 98.8 | 99.0 | 98.5 | 97.15 | 97.90 | 98.18 | 98.78 | 98.6 | 98.6 | 99.88 |
| Nov | 98.48 | 98.53 | 98.54 | 98.6 | 98.7 | 98.1 | 97.54 | 97.98 | 98.42 | 98.78 | 98.8 | 98.8 | 100.28 |
| Dec | 98.90 | 98.92 | 98.20 | 98.6 | 98.4 | 99.2 | 97.74 | 98.49 | 98.34 | 98.95 | 98.9 | 99.1 | 100.51 |
| Monthly Index - 2005 | | | | | | | | | | | | | |
| Jan | 98.31 | 98.42 | 96.92 | 99.2 | 98.2 | 98.6 | 97.54 | 98.70 | 97.40 | 98.35 | 97.9 | 98.1 | 98.23 |
| Feb | 98.65 | 98.73 | 99.06 | 99.2 | 98.8 | 99.0 | 98.14 | 97.03 | 97.64 | 99.04 | 98.8 | 98.0 | 97.84 |
| Mar | 99.32 | 99.32 | 99.65 | 99.1 | 99.6 | 99.3 | 98.73 | 99.50 | 98.49 | 99.73 | 99.0 | 99.2 | 98.70 |
| Apr | 99.75 | 99.73 | 99.82 | 99.4 | 100.1 | 99.3 | 99.19 | 100.30 | 99.90 | 99.91 | 99.6 | 100.0 | 99.80 |
| May | 100.00 | 100.00 | 99.99 | 99.5 | 100.0 | 99.7 | 99.39 | 100.67 | 100.05 | 99.91 | 99.8 | 100.3 | 100.04 |
| Jun | 100.08 | 100.08 | 100.33 | 100.1 | 100.2 | 99.9 | 100.05 | 100.45 | 100.36 | 100.08 | 100.1 | 100.3 | 100.12 |
| Jul | 100.00 | 100.02 | 99.31 | 100.4 | 100.0 | 100.3 | 100.45 | 99.14 | 99.74 | 99.91 | 100.0 | 100.1 | 98.62 |
| Aug | 100.25 | 100.26 | 101.10 | 100.4 | 100.1 | 100.5 | 100.71 | 98.56 | 100.21 | 100.34 | 100.5 | 99.9 | 99.33 |
| Sep | 100.76 | 100.71 | 101.10 | 100.3 | 100.9 | 100.8 | 101.57 | 100.88 | 100.83 | 100.77 | 101.2 | 100.5 | 100.98 |
| Oct | 101.02 | 100.95 | 100.93 | 101.2 | 100.9 | 100.8 | 101.50 | 101.54 | 101.61 | 100.77 | 101.2 | 101.2 | 102.09 |
| Nov | 100.76 | 100.75 | 100.85 | 100.8 | 100.5 | 100.3 | 101.43 | 101.32 | 101.77 | 100.51 | 101.0 | 101.2 | 102.32 |
| Dec | 101.10 | 101.03 | 100.93 | 100.5 | 100.6 | 101.3 | 101.30 | 101.90 | 102.00 | 100.69 | 100.8 | 101.2 | 101.93 |
| Monthly Index - 2006 | | | | | | | | | | | | | |
| Jan | 100.66 | 100.64 | 99.60 | 101.6 | 100.2 | 100.7 | 102.08 | 101.67 | 101.53 | 100.60 | 100.3 | 100.3 | 100.22 |
| Feb | 100.94 | 100.93 | 101.88 | 101.6 | 100.9 | 101.1 | 102.60 | 100.07 | 101.60 | 100.99 | 101.5 | 100.2 | 100.13 |
| Mar | 101.51 | 101.40 | 101.81 | 101.5 | 101.4 | 101.2 | 102.71 | 102.82 | 102.32 | 101.44 | 101.8 | 101.4 | 101.31 |
| Apr | 102.19r | 102.06 | 102.38 | 101.7 | 101.9 | 101.6 | 103.44 | 103.84 | 103.80 | 101.89 | 102.3 | 102.3 | 102.34 |
| May | 102.47p | 102.41p | 102.74 | 102.3 | 102.1 | 101.8 | 104.00 | 103.96 | 104.17 | 102.32 | 102.8 | 102.6 | 102.54 |
| Jun | | | | | | | | | | | | | |
| Jul | | | | | | | | | | | | | |
| Aug | | | | | | | | | | | | | |
| Sep | | | | | | | | | | | | | |
| Oct | | | | | | | | | | | | | |
| Nov | | | | | | | | | | | | | |
| Dec | | | | | | | | | | | | | |

p provisional r revised

TABLE I
HARMONIZED INDICES OF CONSUMER PRICES
2005 = 100
INDEX NUMBERS

| LV | LT | LU | HU | MT | NL | AT | PL | PT | SI | SK | FI | SE | UK | |
|-----------------------------|--------|--------|--------|--------|---------|---------|-------|--------|--------|--------|--------|--------|-------|-------------|
| Annual Average Index | | | | | | | | | | | | | | |
| 88.10 | 96.29 | 93.36 | 90.50 | 94.95 | 97.18 | 96.06 | 94.5 | 95.52 | 94.16 | 90.52 | 99.10 | 98.18 | 96.7 | 2003 |
| 93.55 | 97.41 | 96.37 | 96.63 | 97.53 | 98.52 | 97.94 | 97.9 | 97.92 | 97.60 | 97.28 | 99.24 | 99.18 | 98.0 | 2004 |
| 100.00 | 100.00 | 100.00 | 100.00 | 100.00 | 100.00 | 100.00 | 100.0 | 100.00 | 100.00 | 100.00 | 100.00 | 100.00 | 100.0 | 2005 |
| Monthly Index - 2004 | | | | | | | | | | | | | | |
| 90.36 | 95.77 | 94.02 | 94.41 | 94.26 | 97.33 | 96.80 | 95.8 | 96.40 | 95.58 | 96.09 | 99.01 | 98.36 | 97.0 | Jan |
| 90.92 | 95.61 | 95.24 | 95.47 | 94.33 | 97.89 | 97.23 | 95.9 | 96.24 | 95.75 | 96.73 | 99.45 | 98.18 | 97.2 | Feb |
| 91.82 | 96.09 | 95.32 | 95.97 | 94.72 | 98.69 | 97.58 | 96.2 | 96.48 | 96.32 | 96.95 | 99.01 | 99.06 | 97.4 | Mar |
| 92.37 | 96.41 | 95.81 | 96.25 | 98.70 | 99.01 | 97.49 | 96.9 | 97.42 | 96.94 | 96.95 | 99.01 | 99.32 | 97.8 | Apr |
| 93.55 | 97.93 | 96.29 | 97.12 | 98.86 | 99.18 | 97.84 | 98.0 | 98.20 | 97.79 | 97.27 | 99.19 | 99.67 | 98.1 | May |
| 94.10 | 98.01 | 96.70 | 97.17 | 99.17 | 98.45 | 98.02 | 98.6 | 99.37 | 98.24 | 97.48 | 99.10 | 99.15 | 98.1 | Jun |
| 94.31 | 97.93 | 95.89 | 97.17 | 99.64 | 98.13 | 97.75 | 98.5 | 98.51 | 98.75 | 97.65 | 98.84 | 98.97 | 97.8 | Jul |
| 94.24 | 97.61 | 96.94 | 96.85 | 99.17 | 98.29 | 98.10 | 98.2 | 98.12 | 98.47 | 97.54 | 99.10 | 98.88 | 98.1 | Aug |
| 94.66 | 98.17 | 97.10 | 96.94 | 99.64 | 99.10 | 98.02 | 98.5 | 98.04 | 98.07 | 97.65 | 99.53 | 99.67 | 98.2 | Sep |
| 95.00 | 98.33 | 97.59 | 97.40 | 99.64 | 99.26 | 98.54 | 99.1 | 98.51 | 98.18 | 97.81 | 99.88 | 100.11 | 98.4 | Oct |
| 95.49 | 98.57 | 97.92 | 97.45 | 95.66 | 98.85 | 98.71 | 99.4 | 98.82 | 98.75 | 97.70 | 99.36 | 99.41 | 98.6 | Nov |
| 95.77 | 98.49 | 97.67 | 97.40 | 96.60 | 98.05 | 99.15 | 99.4 | 98.90 | 98.30 | 97.54 | 99.36 | 99.41 | 99.1 | Dec |
| Monthly Index - 2005 | | | | | | | | | | | | | | |
| 96.39 | 98.49 | 96.70 | 98.14 | 96.05 | 98.53 | 99.15 | 99.4 | 98.35 | 97.79 | 99.20 | 98.84 | 98.88 | 98.6 | Jan |
| 97.29 | 98.65 | 98.32 | 98.69 | 96.67 | 99.34 | 99.50 | 99.4 | 98.27 | 98.47 | 99.31 | 99.45 | 99.32 | 98.8 | Feb |
| 97.85 | 99.21 | 98.65 | 99.15 | 97.14 | 100.14 | 99.93 | 99.5 | 98.67 | 99.48 | 99.31 | 99.88 | 99.58 | 99.3 | Mar |
| 98.89 | 99.53 | 99.38 | 99.88 | 100.65 | 100.30 | 99.76 | 99.9 | 99.37 | 99.54 | 99.53 | 100.15 | 99.76 | 99.7 | Apr |
| 99.65 | 99.77 | 99.86 | 100.48 | 101.27 | 100.22 | 99.76 | 100.1 | 99.92 | 99.88 | 99.63 | 99.80 | 99.85 | 100.0 | May |
| 100.27 | 99.93 | 99.78 | 100.76 | 101.27 | 99.90 | 100.02 | 100.0 | 99.99 | 99.93 | 100.01 | 100.06 | 99.93 | 100.0 | Jun |
| 100.27 | 99.77 | 99.70 | 100.67 | 101.35 | 99.58 | 99.76 | 100.0 | 100.38 | 100.72 | 99.69 | 99.71 | 99.67 | 100.1 | Jul |
| 100.13 | 99.85 | 101.08 | 100.21 | 101.66 | 99.90 | 99.93 | 100.0 | 100.54 | 100.22 | 99.63 | 100.06 | 99.93 | 100.4 | Aug |
| 101.66 | 100.65 | 101.65 | 100.39 | 101.66 | 100.78 | 100.55 | 100.4 | 100.70 | 101.18 | 99.90 | 100.67 | 100.72 | 100.6 | Sep |
| 102.35 | 101.30 | 102.46 | 100.44 | 102.60 | 100.78 | 100.55 | 100.7 | 101.09 | 101.35 | 101.24 | 100.67 | 100.98 | 100.7 | Oct |
| 102.70 | 101.38 | 101.41 | 100.62 | 99.79 | 100.46 | 100.37 | 100.5 | 101.32 | 100.78 | 101.24 | 100.32 | 100.63 | 100.7 | Nov |
| 102.56 | 101.46 | 101.00 | 100.58 | 99.87 | 100.06 | 100.72 | 100.2 | 101.40 | 100.67 | 101.30 | 100.41 | 100.72 | 101.0 | Dec |
| Monthly Index - 2006 | | | | | | | | | | | | | | |
| 103.67 | 101.98 | 100.63 | 100.55 | 98.31 | 100.28 | 100.66 | 100.3 | 100.95 | 100.32 | 103.23 | 100.00 | 100.01 | 100.5 | Jan |
| 104.09 | 102.03 | 102.13 | 100.92 | 98.93 | 100.78 | 100.99 | 100.3 | 101.15 | 100.70 | 103.56 | 100.77 | 100.37 | 100.9 | Feb |
| 104.29 | 102.24 | 102.31 | 101.51 | 100.00 | 101.58 | 101.26 | 100.4 | 101.65 | 101.43 | 103.57 | 101.04 | 101.03 | 101.1 | Mar |
| 104.96 | 102.94 | 102.81 | 102.27 | 104.16 | 102.06 | 101.84r | 101.1 | 102.23 | 102.34 | 103.90 | 101.61 | 101.58 | 101.7 | Apr |
| 106.69 | 103.39 | 103.43 | 103.37 | 104.83 | 102.06p | 101.89p | 101.6 | 102.79 | 103.27 | 104.41 | 101.52 | 101.78 | 102.2 | May |
| | | | | | | | | | | | | | | Jun |
| | | | | | | | | | | | | | | Jul |
| | | | | | | | | | | | | | | Aug |
| | | | | | | | | | | | | | | Sep |
| | | | | | | | | | | | | | | Oct |
| | | | | | | | | | | | | | | Nov |
| | | | | | | | | | | | | | | Dec |

p provisional r revised

TABLE II
HARMONIZED INDICES OF CONSUMER PRICES
 RATES OF CHANGE (%)

| | Euro area | EICP | BE | CZ | DK | DE | EE | EL | ES | FR | IE | IT | CY |
|--------------------------------------|-----------|------|-----|------|-----|-----|-----|-----|-----|-----|-----|-----|-----|
| Annual Average Rate of Change | | | | | | | | | | | | | |
| 2003/12 | 2.1 | 2.0 | 1.5 | -0.1 | 2.0 | 1.0 | 1.4 | 3.4 | 3.1 | 2.2 | 4.0 | 2.8 | 4.0 |
| 2004/12 | 2.1 | 2.0 | 1.9 | 2.6 | 0.9 | 1.8 | 3.0 | 3.0 | 3.1 | 2.3 | 2.3 | 2.3 | 1.9 |
| 2005/12 | 2.2 | 2.2 | 2.5 | 1.6 | 1.7 | 1.9 | 4.1 | 3.5 | 3.4 | 1.9 | 2.2 | 2.2 | 2.0 |
| 2006/5 | 2.3p | 2.3p | 2.6 | 2.1 | 2.0 | 2.1 | 4.2 | 3.4 | 3.7 | 2.0 | 2.5 | 2.3 | 2.0 |
| Annual Rate of Change - 2004 | | | | | | | | | | | | | |
| Jan | 1.9 | 1.8 | 1.4 | 2.0 | 0.9 | 1.1 | 0.6 | 3.1 | 2.3 | 2.2 | 2.2 | 2.1 | 1.6 |
| Feb | 1.6 | 1.5 | 1.2 | 2.0 | 0.6 | 0.8 | 0.6 | 2.6 | 2.2 | 1.9 | 2.2 | 2.5 | 1.4 |
| Mar | 1.7 | 1.5 | 1.0 | 2.2 | 0.4 | 1.1 | 0.7 | 2.9 | 2.2 | 1.9 | 1.9 | 2.3 | 0.1 |
| Apr | 2.0 | 1.8 | 1.7 | 2.0 | 0.5 | 1.7 | 1.5 | 3.1 | 2.7 | 2.4 | 1.7 | 2.3 | 0.1 |
| May | 2.5 | 2.3 | 2.4 | 2.6 | 1.1 | 2.1 | 3.7 | 3.1 | 3.4 | 2.8 | 2.1 | 2.3 | 1.2 |
| Jun | 2.4 | 2.3 | 2.0 | 2.7 | 0.8 | 2.0 | 4.4 | 3.0 | 3.5 | 2.7 | 2.5 | 2.4 | 2.4 |
| Jul | 2.3 | 2.2 | 2.1 | 3.0 | 1.1 | 2.1 | 4.0 | 3.1 | 3.3 | 2.6 | 2.5 | 2.3 | 2.9 |
| Aug | 2.3 | 2.1 | 2.0 | 3.1 | 0.8 | 2.1 | 3.9 | 2.8 | 3.3 | 2.5 | 2.5 | 2.4 | 2.8 |
| Sep | 2.1 | 2.0 | 1.8 | 2.8 | 0.9 | 2.0 | 3.8 | 2.9 | 3.2 | 2.2 | 2.4 | 2.2 | 1.8 |
| Oct | 2.4 | 2.2 | 2.7 | 3.1 | 1.5 | 2.3 | 4.0 | 3.3 | 3.6 | 2.3 | 2.5 | 2.1 | 2.0 |
| Nov | 2.2 | 2.1 | 2.3 | 2.6 | 1.0 | 2.0 | 4.4 | 3.2 | 3.5 | 2.2 | 2.7 | 2.1 | 2.6 |
| Dec | 2.4 | 2.2 | 1.9 | 2.5 | 0.9 | 2.3 | 4.8 | 3.1 | 3.3 | 2.3 | 2.4 | 2.4 | 3.9 |
| Annual Rate of Change - 2005 | | | | | | | | | | | | | |
| Jan | 1.9 | 2.0 | 2.0 | 1.5 | 0.8 | 1.6 | 4.2 | 4.2 | 3.1 | 1.6 | 2.1 | 2.0 | 2.8 |
| Feb | 2.1 | 2.1 | 2.3 | 1.4 | 1.0 | 1.9 | 4.6 | 3.2 | 3.3 | 1.9 | 2.1 | 2.0 | 2.4 |
| Mar | 2.1 | 2.1 | 2.8 | 1.1 | 1.3 | 1.6 | 4.8 | 2.9 | 3.4 | 2.1 | 1.9 | 2.2 | 2.4 |
| Apr | 2.1 | 2.1 | 2.4 | 1.4 | 1.7 | 1.4 | 4.7 | 3.3 | 3.5 | 2.0 | 2.2 | 2.1 | 2.7 |
| May | 2.0 | 2.0 | 2.3 | 0.9 | 1.2 | 1.6 | 2.9 | 3.2 | 3.0 | 1.7 | 2.1 | 2.3 | 2.1 |
| Jun | 2.1 | 2.0 | 2.7 | 1.3 | 1.7 | 1.8 | 3.2 | 3.2 | 3.2 | 1.8 | 1.9 | 2.1 | 1.5 |
| Jul | 2.2 | 2.1 | 2.7 | 1.4 | 1.8 | 1.8 | 3.9 | 3.9 | 3.3 | 1.8 | 2.2 | 2.1 | 1.3 |
| Aug | 2.2 | 2.2 | 2.9 | 1.4 | 2.4 | 1.9 | 4.2 | 3.6 | 3.3 | 2.0 | 2.1 | 2.1 | 1.5 |
| Sep | 2.6 | 2.5 | 3.0 | 2.0 | 2.3 | 2.5 | 4.9 | 3.8 | 3.8 | 2.4 | 2.7 | 2.2 | 2.1 |
| Oct | 2.5 | 2.4 | 2.2 | 2.4 | 1.9 | 2.3 | 4.5 | 3.7 | 3.5 | 2.0 | 2.6 | 2.6 | 2.2 |
| Nov | 2.3 | 2.3 | 2.3 | 2.2 | 1.8 | 2.2 | 4.0 | 3.4 | 3.4 | 1.8 | 2.2 | 2.4 | 2.0 |
| Dec | 2.2 | 2.1 | 2.8 | 1.9 | 2.2 | 2.1 | 3.6 | 3.5 | 3.7 | 1.8 | 1.9 | 2.1 | 1.4 |
| Annual Rate of Change - 2006 | | | | | | | | | | | | | |
| Jan | 2.4 | 2.3 | 2.8 | 2.4 | 2.0 | 2.1 | 4.7 | 3.0 | 4.2 | 2.3 | 2.5 | 2.2 | 2.0 |
| Feb | 2.3 | 2.2 | 2.8 | 2.4 | 2.1 | 2.1 | 4.5 | 3.1 | 4.1 | 2.0 | 2.7 | 2.2 | 2.3 |
| Mar | 2.2 | 2.1 | 2.2 | 2.4 | 1.8 | 1.9 | 4.0 | 3.3 | 3.9 | 1.7 | 2.8 | 2.2 | 2.6 |
| Apr | 2.4 | 2.3 | 2.6 | 2.3 | 1.8 | 2.3 | 4.3 | 3.5 | 3.9 | 2.0 | 2.7 | 2.3 | 2.5 |
| May | 2.5p | 2.4p | 2.8 | 2.8 | 2.1 | 2.1 | 4.6 | 3.3 | 4.1 | 2.4 | 3.0 | 2.3 | 2.5 |
| Jun | | | | | | | | | | | | | |
| Jul | | | | | | | | | | | | | |
| Aug | | | | | | | | | | | | | |
| Sep | | | | | | | | | | | | | |
| Oct | | | | | | | | | | | | | |
| Nov | | | | | | | | | | | | | |
| Dec | | | | | | | | | | | | | |

p provisional r revised

TABLE II
HARMONIZED INDICES OF CONSUMER PRICES
RATES OF CHANGE (%)

| LV | LT | LU | HU | MT | NL | AT | PL | PT | SI | SK | FI | SE | UK | |
|--------------------------------------|------|-----|-----|-----|------|------|-----|-----|-----|-----|------|-----|-----|---------|
| Annual Average Rate of Change | | | | | | | | | | | | | | |
| 2.9 | -1.1 | 2.5 | 4.7 | 1.9 | 2.2 | 1.3 | 0.7 | 3.3 | 5.7 | 8.4 | 1.3 | 2.3 | 1.4 | 2003/12 |
| 6.2 | 1.2 | 3.2 | 6.8 | 2.7 | 1.4 | 2.0 | 3.6 | 2.5 | 3.7 | 7.5 | 0.1 | 1.0 | 1.3 | 2004/12 |
| 6.9 | 2.7 | 3.8 | 3.5 | 2.5 | 1.5 | 2.1 | 2.2 | 2.1 | 2.5 | 2.8 | 0.8 | 0.8 | 2.1 | 2005/12 |
| 6.9 | 2.9 | 3.9 | 3.0 | 2.8 | 1.6p | 1.9p | 1.3 | 2.5 | 2.4 | 3.5 | 1.1 | 1.2 | 2.1 | 2006/5 |
| Annual Rate of Change - 2004 | | | | | | | | | | | | | | |
| 4.0 | -1.2 | 2.3 | 6.7 | 2.8 | 1.5 | 1.2 | 1.8 | 2.2 | 4.0 | 8.3 | 0.8 | 1.3 | 1.4 | Jan |
| 4.3 | -1.2 | 2.5 | 7.0 | 2.5 | 1.3 | 1.5 | 1.8 | 2.1 | 3.6 | 8.4 | 0.4 | 0.1 | 1.3 | Feb |
| 4.7 | -0.9 | 2.0 | 6.6 | 2.1 | 1.2 | 1.5 | 1.8 | 2.2 | 3.5 | 8.0 | -0.4 | 0.4 | 1.1 | Mar |
| 5.0 | -0.7 | 2.7 | 7.0 | 3.6 | 1.5 | 1.5 | 2.3 | 2.4 | 3.6 | 7.9 | -0.4 | 1.0 | 1.1 | Apr |
| 6.1 | 1.1 | 3.4 | 7.8 | 3.1 | 1.7 | 2.1 | 3.5 | 2.5 | 3.9 | 8.2 | -0.1 | 1.5 | 1.5 | May |
| 6.1 | 1.1 | 3.8 | 7.5 | 3.2 | 1.5 | 2.3 | 4.2 | 3.7 | 3.9 | 8.2 | -0.1 | 1.2 | 1.6 | Jun |
| 6.7 | 1.7 | 3.8 | 7.2 | 3.1 | 1.2 | 2.1 | 4.7 | 2.9 | 3.7 | 8.4 | 0.2 | 1.2 | 1.4 | Jul |
| 7.8 | 2.2 | 3.6 | 7.2 | 2.5 | 1.2 | 2.2 | 4.8 | 2.4 | 3.7 | 7.1 | 0.3 | 1.1 | 1.3 | Aug |
| 7.7 | 3.1 | 3.1 | 6.7 | 3.2 | 1.2 | 1.8 | 4.6 | 2.1 | 3.4 | 6.6 | 0.2 | 1.1 | 1.1 | Sep |
| 7.2 | 3.1 | 4.1 | 6.4 | 2.7 | 1.5 | 2.4 | 4.6 | 2.4 | 3.4 | 6.6 | 0.6 | 1.5 | 1.2 | Oct |
| 7.2 | 2.9 | 4.0 | 5.8 | 1.9 | 1.5 | 2.3 | 4.5 | 2.6 | 3.8 | 6.3 | 0.2 | 1.1 | 1.5 | Nov |
| 7.4 | 2.8 | 3.5 | 5.5 | 1.9 | 1.2 | 2.5 | 4.4 | 2.6 | 3.3 | 5.8 | 0.1 | 0.9 | 1.7 | Dec |
| Annual Rate of Change - 2005 | | | | | | | | | | | | | | |
| 6.7 | 2.8 | 2.9 | 4.0 | 1.9 | 1.2 | 2.4 | 3.8 | 2.0 | 2.3 | 3.2 | -0.2 | 0.5 | 1.6 | Jan |
| 7.0 | 3.2 | 3.2 | 3.4 | 2.5 | 1.5 | 2.3 | 3.6 | 2.1 | 2.8 | 2.7 | 0.0 | 1.2 | 1.7 | Feb |
| 6.6 | 3.2 | 3.5 | 3.3 | 2.6 | 1.5 | 2.4 | 3.4 | 2.3 | 3.3 | 2.4 | 0.9 | 0.5 | 1.9 | Mar |
| 7.1 | 3.2 | 3.7 | 3.8 | 2.0 | 1.3 | 2.3 | 3.1 | 2.0 | 2.7 | 2.7 | 1.2 | 0.4 | 1.9 | Apr |
| 6.5 | 1.9 | 3.7 | 3.5 | 2.4 | 1.0 | 2.0 | 2.1 | 1.8 | 2.1 | 2.4 | 0.6 | 0.2 | 1.9 | May |
| 6.6 | 2.0 | 3.2 | 3.7 | 2.1 | 1.5 | 2.0 | 1.4 | 0.6 | 1.7 | 2.6 | 1.0 | 0.8 | 2.0 | Jun |
| 6.3 | 1.9 | 4.0 | 3.6 | 1.7 | 1.5 | 2.1 | 1.5 | 1.9 | 2.0 | 2.1 | 0.9 | 0.7 | 2.3 | Jul |
| 6.3 | 2.3 | 4.3 | 3.5 | 2.5 | 1.6 | 1.9 | 1.8 | 2.5 | 1.8 | 2.1 | 1.0 | 1.1 | 2.4 | Aug |
| 7.4 | 2.5 | 4.7 | 3.6 | 2.0 | 1.7 | 2.6 | 1.9 | 2.7 | 3.2 | 2.3 | 1.1 | 1.1 | 2.5 | Sep |
| 7.7 | 3.0 | 5.0 | 3.1 | 3.0 | 1.5 | 2.0 | 1.6 | 2.6 | 3.2 | 3.5 | 0.8 | 0.9 | 2.3 | Oct |
| 7.6 | 2.9 | 3.6 | 3.3 | 4.3 | 1.6 | 1.7 | 1.1 | 2.5 | 2.1 | 3.6 | 1.0 | 1.2 | 2.1 | Nov |
| 7.1 | 3.0 | 3.4 | 3.3 | 3.4 | 2.0 | 1.6 | 0.8 | 2.5 | 2.4 | 3.9 | 1.1 | 1.3 | 1.9 | Dec |
| Annual Rate of Change - 2006 | | | | | | | | | | | | | | |
| 7.6 | 3.5 | 4.1 | 2.5 | 2.4 | 1.8 | 1.5 | 0.9 | 2.6 | 2.6 | 4.1 | 1.2 | 1.1 | 1.9 | Jan |
| 7.0 | 3.4 | 3.9 | 2.3 | 2.3 | 1.4 | 1.5 | 0.9 | 2.9 | 2.3 | 4.3 | 1.3 | 1.1 | 2.0 | Feb |
| 6.6 | 3.1 | 3.7 | 2.4 | 2.9 | 1.4 | 1.3 | 0.9 | 3.0 | 2.0 | 4.3 | 1.2 | 1.5 | 1.8 | Mar |
| 6.1 | 3.4 | 3.5 | 2.4 | 3.5 | 1.8 | 2.1r | 1.2 | 2.9 | 2.8 | 4.4 | 1.5 | 1.8 | 2.0 | Apr |
| 7.1 | 3.6 | 3.6 | 2.9 | 3.5 | 1.8p | 2.1p | 1.5 | 2.9 | 3.4 | 4.8 | 1.7 | 1.9 | 2.2 | May |
| | | | | | | | | | | | | | | Jun |
| | | | | | | | | | | | | | | Jul |
| | | | | | | | | | | | | | | Aug |
| | | | | | | | | | | | | | | Sep |
| | | | | | | | | | | | | | | Oct |
| | | | | | | | | | | | | | | Nov |
| | | | | | | | | | | | | | | Dec |

p provisional r revised

TABLE III
HARMONIZED INDICES OF CONSUMER
PRICES
INDEX NUMBERS 2005 = 100

| | EEA | IS | NO | CH** |
|-----------------------------|---------|--------|-------|-------|
| Annual Average Index | | | | |
| 2003 | 95.97 | 96.41 | 97.9 | 98.0 |
| 2004 | 97.89 | 98.64 | 98.5 | 98.8 |
| 2005 | 100.00 | 100.00 | 100.0 | 100.0 |
| Monthly Index - 2004 | | | | |
| Jan | 96.52 | 97.17 | 97.7 | 97.9 |
| Feb | 96.71 | 96.79 | 97.9 | 97.9 |
| Mar | 97.29 | 97.56 | 98.4 | 98.1 |
| Apr | 97.69 | 97.94 | 98.6 | 99.0 |
| May | 98.08 | 98.63 | 98.7 | 99.2 |
| Jun | 98.10 | 99.17 | 98.7 | 99.4 |
| Jul | 97.92 | 98.86 | 98.6 | 98.3 |
| Aug | 98.06 | 98.79 | 98.3 | 98.7 |
| Sep | 98.23 | 99.17 | 98.7 | 98.7 |
| Oct | 98.57 | 99.71 | 99.0 | 99.6 |
| Nov | 98.54 | 99.79 | 99.0 | 99.7 |
| Dec | 98.92 | 100.10 | 98.8 | 99.6 |
| Monthly Index - 2005 | | | | |
| Jan | 98.42 | 99.71 | 98.7 | 99.1 |
| Feb | 98.73 | 99.56 | 98.7 | 99.3 |
| Mar | 99.32 | 99.94 | 99.2 | 99.6 |
| Apr | 99.73 | 99.48 | 99.7 | 100.4 |
| May | 100.00 | 99.17 | 100.1 | 100.3 |
| Jun | 100.08 | 99.56 | 100.3 | 100.0 |
| Jul | 100.02 | 99.40 | 99.9 | 99.5 |
| Aug | 100.26 | 99.17 | 100.1 | 99.6 |
| Sep | 100.71 | 100.79 | 100.8 | 100.1 |
| Oct | 100.95 | 101.25 | 100.8 | 100.9 |
| Nov | 100.75 | 100.87 | 100.8 | 100.7 |
| Dec | 101.03 | 101.10 | 100.8 | 100.6 |
| Monthly Index - 2006 | | | | |
| Jan | 100.63 | 101.01 | 100.5 | 100.4 |
| Feb | 100.93 | 100.78 | 101.4 | 100.7 |
| Mar | 101.40 | 101.93 | 101.6 | 100.6 |
| Apr | 102.06 | 102.72 | 102.5 | 101.4 |
| May | 102.42p | 103.92 | 102.6 | 101.6 |
| Jun | | | | |
| Jul | | | | |
| Aug | | | | |
| Sep | | | | |
| Oct | | | | |
| Nov | | | | |
| Dec | | | | |

TABLE IV
HARMONIZED INDICES OF CONSUMER
PRICES
RATES OF CHANGE (%)

| | EEA | IS | NO | CH** | |
|--------------------------------------|-----|------|------|------|---------|
| Annual Average Rate of Change | | | | | |
| 2.0 | 1.4 | 2.0 | 0.6 | | 2003/12 |
| 2.0 | 2.3 | 0.6 | 0.8 | | 2004/12 |
| 2.2 | 1.4 | 1.5 | 1.2 | | 2005/12 |
| 2.3p | 1.6 | 2.1 | 1.1 | | 2006/5 |
| Annual Rate of Change - 2004 | | | | | |
| 1.7 | 1.5 | -1.5 | 0.2 | | Jan |
| 1.5 | 1.4 | -1.5 | 0.1 | | Feb |
| 1.5 | 1.0 | -0.4 | -0.1 | | Mar |
| 1.8 | 1.5 | 0.5 | 0.6 | | Apr |
| 2.3 | 2.3 | 1.1 | 0.9 | | May |
| 2.3 | 2.8 | 1.3 | 1.1 | | Jun |
| 2.2 | 2.7 | 1.6 | 0.8 | | Jul |
| 2.1 | 3.1 | 1.1 | 1.0 | | Aug |
| 2.0 | 2.7 | 1.1 | 0.8 | | Sep |
| 2.2 | 2.9 | 1.4 | 1.3 | | Oct |
| 2.1 | 2.9 | 1.4 | 1.5 | | Nov |
| 2.2 | 2.9 | 1.2 | 1.4 | | Dec |
| Annual Rate of Change - 2005 | | | | | |
| 2.0 | 2.6 | 1.0 | 1.2 | | Jan |
| 2.1 | 2.9 | 0.8 | 1.4 | | Feb |
| 2.1 | 2.4 | 0.8 | 1.5 | | Mar |
| 2.1 | 1.6 | 1.1 | 1.4 | | Apr |
| 2.0 | 0.5 | 1.4 | 1.1 | | May |
| 2.0 | 0.4 | 1.6 | 0.6 | | Jun |
| 2.1 | 0.5 | 1.3 | 1.2 | | Jul |
| 2.2 | 0.4 | 1.8 | 0.9 | | Aug |
| 2.5 | 1.6 | 2.1 | 1.4 | | Sep |
| 2.4 | 1.5 | 1.8 | 1.3 | | Oct |
| 2.2 | 1.1 | 1.8 | 1.0 | | Nov |
| 2.1 | 1.0 | 2.0 | 1.0 | | Dec |
| Annual Rate of Change - 2006 | | | | | |
| 2.2 | 1.3 | 1.8 | 1.3 | | Jan |
| 2.2 | 1.2 | 2.7 | 1.4 | | Feb |
| 2.1 | 2.0 | 2.4 | 1.0 | | Mar |
| 2.3 | 3.3 | 2.8 | 1.1 | | Apr |
| 2.4p | 4.8 | 2.5 | 1.4 | | May |
| | | | | | Jun |
| | | | | | Jul |
| | | | | | Aug |
| | | | | | Sep |
| | | | | | Oct |
| | | | | | Nov |
| | | | | | Dec |

p provisional ** national CPI

TABLE V

MAIN CATEGORIES OF HARMONIZED INDICES OF CONSUMER PRICES

May 2006 / May 2005

ANNUAL RATES OF CHANGE (%)

| | 00. | 01. | 02. | 03. | 04. | 05. | 06. | 07. | 08. | 09. | 10. | 11. | 12. |
|------------------|------|------|------|-------|------|------|------|------|-------|-------|--------|------|------|
| Euro area | 2.5p | 1.8p | 2.8p | 0.4p | 5.7p | 0.9p | 1.3p | 5.2p | -3.4p | -0.4p | 2.7p | 2.5p | 2.3p |
| EICP | 2.4p | 1.7p | 2.5p | -0.6p | 6.1p | 0.4p | 1.6p | 4.9p | -2.7p | -0.6p | 3.2p | 2.7p | 2.8p |
| BE | 2.8 | 1.6 | 1.1 | 0.0 | 6.6 | 1.2 | 3.4 | 4.7 | -1.8 | 1.3 | 1.6 | 2.3 | 2.4 |
| CZ | 2.8 | 0.1 | 1.6 | -6.8 | 10.1 | -1.6 | 3.7 | 4.5 | 7.4 | 2.0 | 3.9 | 3.2 | 1.9 |
| DK | 2.1 | 2.2 | 1.4 | -2.8 | 4.1 | 0.7 | 1.4 | 4.1 | -3.1 | 1.7 | 1.5 | 2.3 | 1.0 |
| DE | 2.1 | 1.5 | 4.0 | -0.9 | 4.9 | 0.0 | 0.7 | 4.8 | -3.4 | -1.3 | 2.1 | 0.8 | 0.9 |
| EE | 4.6 | 3.8 | 3.5 | 4.4 | 8.1 | 2.5 | 1.9 | 10.2 | -6.6 | 4.6 | 3.6 | 2.3 | 4.3 |
| EL | 3.3 | 2.4 | 3.7 | 3.3 | 8.2 | 1.9 | 2.5 | 4.4 | 1.3 | 1.2 | 3.8 | 2.0 | 2.8 |
| ES | 4.1 | 3.6 | 2.4 | 1.4 | 7.5 | 2.6 | 1.2 | 8.0 | -1.2 | 0.7 | 3.9 | 4.6 | 3.7 |
| FR | 2.4 | 1.3 | 0.3 | 0.1 | 6.0 | 1.3 | 2.7 | 5.0 | -6.9 | -1.0 | 3.5 | 2.2 | 3.2 |
| IE | 3.0 | 2.6 | 1.3 | -2.1 | 7.8 | -0.9 | 4.5 | 5.1 | -0.5 | 0.3 | 4.6 | 3.9 | 2.5 |
| IT | 2.3 | 1.1 | 5.1 | 1.4 | 6.3 | 1.3 | -0.6 | 3.8 | -2.8 | 0.9 | 3.1 | 2.3 | 2.8 |
| CY | 2.5 | 6.1 | -1.5 | -9.6 | 11.3 | -0.2 | 1.7 | 6.6 | 0.7 | -0.3 | 5.3 | 0.5 | 3.1 |
| LV | 7.1 | 6.9 | 7.6 | 0.5 | 13.9 | 3.1 | 4.7 | 9.4 | -8.3 | 3.1 | 8.8 | 18.3 | 6.1 |
| LT | 3.6 | 4.8 | -1.4 | -1.9 | 5.2 | 0.2 | 7.1 | 11.3 | -2.1 | 2.0 | -1.2 | 3.1 | 4.8 |
| LU | 3.6 | 2.0 | 1.2 | 0.4 | 7.7 | 1.6 | 5.3 | 7.4 | -1.7 | 1.0 | 5.0 | 3.5 | 3.2 |
| HU | 2.9 | 6.2 | 3.6 | -1.5 | 2.2 | -2.3 | 4.5 | 5.2 | -3.2 | 0.6 | 7.6 | 3.8 | 2.2 |
| MT | 3.5 | 2.1 | 0.9 | 0.8 | 12.5 | 2.6 | 4.3 | 7.6 | 0.1 | 0.9 | 2.7 | 2.0 | 3.6 |
| NL | 1.8p | 0.8p | 0.2p | -0.1p | 4.7p | 0.0p | 3.3p | 4.8p | 0.4p | 0.4p | -15.8p | 1.8p | 0.5p |
| AT | 2.1p | 1.5p | 0.6p | 2.9p | 6.3p | 0.3p | 1.5p | 4.8p | -6.2p | -2.5p | 7.3p | 1.8p | 2.1p |
| PL | 1.5 | -0.1 | 1.3 | -6.9 | 4.8 | -0.1 | 1.5 | 3.7 | -0.4 | -2.3 | 1.6 | 1.6 | 3.9 |
| PT | 2.9 | 2.6 | 8.6 | -11.2 | 4.2 | 1.0 | 0.6 | 8.6 | -0.6 | 1.5 | 5.7 | 2.0 | 3.7 |
| SI | 3.4 | 1.8 | 3.9 | 2.4 | 8.4 | 2.1 | -2.4 | 4.1 | 0.6 | 1.8 | 2.8 | 4.7 | 4.3 |
| SK | 4.8 | 2.8 | 2.0 | -0.1 | 13.4 | -0.8 | 8.7 | 2.6 | 0.0 | 1.7 | 7.2 | 2.6 | 3.7 |
| FI | 1.7 | 1.1 | 2.3 | -1.7 | 4.0 | 0.8 | 1.2 | 4.3 | -7.5 | 0.4 | 2.5 | 2.2 | 2.1 |
| SE | 1.9 | 0.9 | 1.6 | 2.6 | 4.2 | -2.4 | 1.0 | 4.6 | -7.1 | -0.6 | 2.9 | 2.1 | 4.0 |
| UK | 2.2 | 1.1 | 2.2 | -3.7 | 9.0 | -0.8 | 2.9 | 4.0 | -0.4 | -1.6 | 4.7 | 3.2 | 4.1 |
| EEA | 2.4p | 1.7p | 2.5p | -0.6p | 6.1p | 0.4p | 1.6p | 4.9p | -2.6p | -0.6p | 3.2p | 2.7p | 2.7p |
| IS | 4.8 | 10.3 | 2.5 | -2.7 | 4.0 | 0.4 | 3.1 | 10.7 | 4.5 | 2.0 | 11.6 | 3.4 | 1.8 |
| NO | 2.5 | 1.3 | 1.9 | -1.2 | 8.4 | -1.8 | 3.8 | 4.0 | 2.9 | 0.5 | 2.2 | 2.2 | -1.6 |

p provisional

COICOP/HICP Code

- | | | | |
|------------|---|------------|----------------------------------|
| 00. | HICP (all-items index) | 06. | Health |
| 01. | Food and non-alcoholic beverages | 07. | Transports |
| 02. | Alcoholic beverages and tobacco | 08. | Communications |
| 03. | Clothing and footwear | 09. | Recreation and culture |
| 04. | Housing, water, electricity, gas and other fuels | 10. | Education |
| 05. | Furnishings, household equipment and routine maintenance of the house | 11. | Restaurants and hotels |
| | | 12. | Miscellaneous goods and services |

Further information:

Databases

[EUROSTAT Website/Economy and finance/Prices/Harmonized indices of consumer prices/Harmonized indices of consumer prices - Monthly data \(index\)](#)

Journalists can contact the media support service:

Bech Building Office A4/017
L - 2920 Luxembourg
Tel. (352) 4301 33408
Fax (352) 4301 35349
E-mail: eurostat-mediasupport@ec.europa.eu

European Statistical Data Support:

Eurostat set up with the members of the 'European statistical system' a network of support centres, which will exist in nearly all Member States as well as in some EFTA countries.

Their mission is to provide help and guidance to Internet users of European statistical data.

Contact details for this support network can be found on our Internet site: www.europa.eu.int/comm/eurostat/

A list of worldwide sales outlets is available at the:

Office for Official Publications of the European Communities.

2, rue Mercier
L - 2985 Luxembourg
URL: <http://publications.eu.int>
E-mail: info-info-opoce@ec.europa.eu