

*Extract from "Industrial Trends - February 1993"*

### No change in somber economic climate

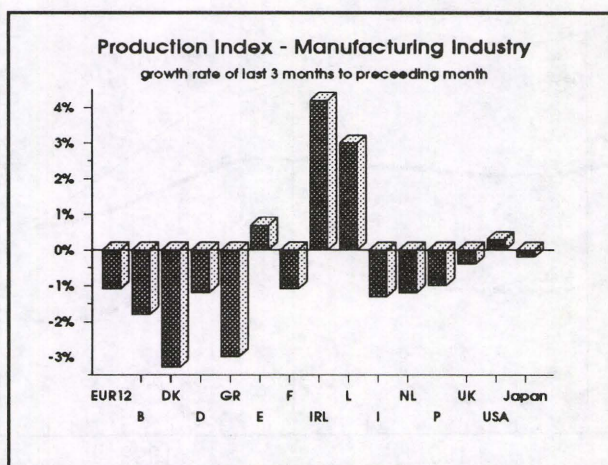
Industrial production trends in the European Community (EUR12) up to **November 1992** show that the recession is by no means over. The slump is continuing. **Production has continued to fall in all sectors of manufacturing industry.** In November the **index of industrial production** (NACE 1-4), adjusted for the number of working days, stood at 119.3 (1985=100) for the Community as a whole, 3.6 % down on the previous November's figure. For the capital goods industries, the index fell 6.5 %, giving a seasonally-adjusted **production index** for November of 111.8, whereas in October it had stood at 114.4 and in January 1992 at 117.4. The seasonally-adjusted EC production index fell by 0.7 % in the past three months (September, October and November)

compared with the previous three months (June, July and August).

The seasonally-adjusted figures for industrial output in the **EC Member States** are as follows (rate of change for the past three months compared with the previous three months, with the capital goods industries in brackets): Denmark -2.8 % (-5.3 %); Greece -1.9 % (-8.7 %), Italy -1.7 % (-3 %), Belgium -1.4 % (estimated) (+3.0 %), Germany (West) -1.1 % (-1.4 %), France -0.6 % (-1.6 %), Netherlands -0.5 % (-2.1 %), United Kingdom +1.1 % (+0.1 %), Ireland +3.1 % (estimated) (+4.2 %). Production is therefore falling **in very many Member States.**

In the **USA**, industrial production stagnated at +0.1 % (rate of change for the past three months compared with the previous three months); in **Japan** it fell slightly (an estimated +0.2 %).

Eurostat has EC figures for the **construction industry** for the first time. The **production index** for the construction industry gives a slightly more cheerful picture. The seasonally-adjusted figures (rates of change for the past three months compared with the previous three months) varied fairly widely however: EUR12 +0.4 %, Denmark -5.8 %, Italy -1.0 %, Belgium -0.6 %, France +0.1 %, United Kingdom +1.2 %, Germany (West) +2.9 %, Luxembourg +4.5 %.



Manuscript completed on = 15.02.1993

For further information please contact: FELDMANN  
Eurostat, L-2920 Luxembourg, tel. 4301-34401 Fax: 4301-34771

Price (excl. VAT) in Luxembourg: Subscription ECU 206

Catalogue number: CA-NL-93-004-EN-C

3261.3000



# INDUSTRIELLE PRODUKTION

# INDUSTRIAL PRODUCTION

# PRODUCTION INDUSTRIELLE

LANGFRISTIGER TREND

LONG TERM TREND

TENDANCE A LONG TERME

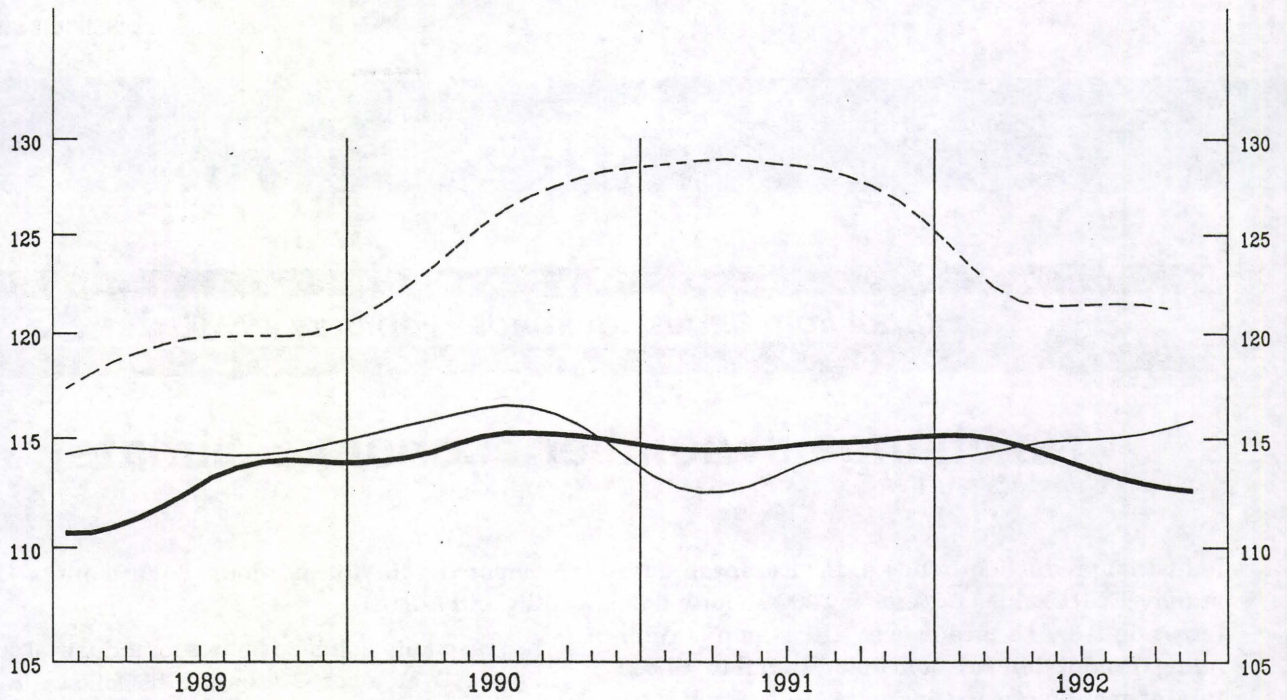
NACE 1-4

1985 = 100

— USA

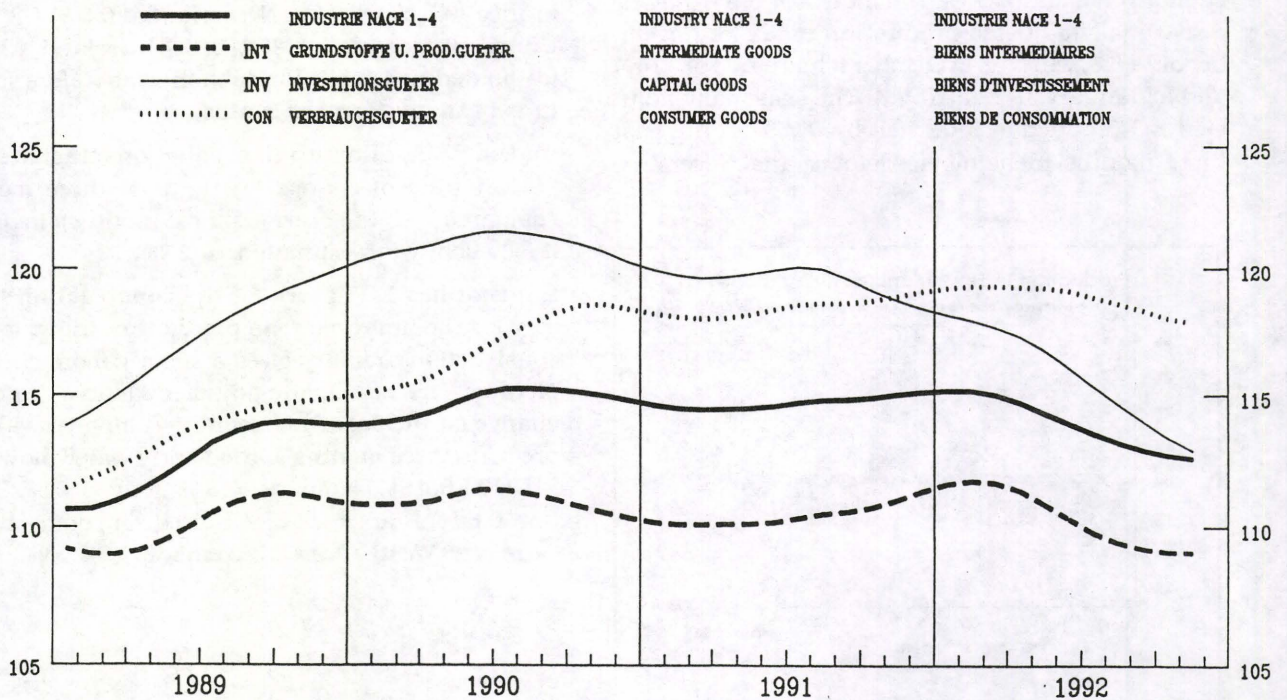
— EUR 12

- - - JAPAN



EUR 12

1985 = 100



# BASISINDIKATOREN BASIC INDICATORS INDICATEURS DE BASE

1985 = 100

	Letzte Zahl / Latest figure / Dernier chiffre			Veränderung / Change / Variation	
	Zeitraum Période	Pro Arbeitstag Par working day Par jour ouvrable	Saisonbereinigt Seasonally adjusted Désaisonnalisés	Pro Arbeitstag Par working day Par jour ouvrable ZB (1)	Saisonbereinigt Seasonally adjusted Désaisonnalisés ZA (2)

**PRODUKTIONSINDIZES**

**INDICES OF PRODUCTION**

**INDICES DE PRODUCTION**

**NACE 1-4**

GESAMTE INDUSTRIE OHNE BAUINDUSTRIE EUR12	11	92	TOTAL INDUSTRY EXCLUDING CONSTRUCTION 119.3	111.1	ENSEMBLE DE L'INDUSTRIE SANS BATIMENT -2.2	-0.8
B	10	92	117.0	114.0	0.2	-1.8
DK	11	92	110.9	105.2	0.6	-2.8
D	11	92	120.2	116.6	-3.6	-1.1
GR	11	92	105.4	100.5	-3.1	-1.9
E	09	92	119.1	113.7	-1.4	0.9
F	11	92	117.3	109.8	-1.4	-0.6
IRL	09	92	171.1	170.0	11.2	4.4
I	11	92	121.8	111.9	-3.7	-1.7
L	09	92	118.9	119.1	-3.1	-1.3
NL	11	92	121.0	111.1	-0.3	-0.5
P	10	92	132.3	127.7	-6.7	-5.2
UK	11	92	114.7	106.3	0.3	1.1
USA	11	92	115.6	116.2	0.8	0.1
J	10	92	123.1	120.6	-5.5	-0.7

**GRUNDSTOFFE U. PROD. GÜTER**

**INTERMEDIATE GOODS**

**BIENS INTERMÉDIAIRES**

EUR12	11	92	115.6	107.9	-1.7	-0.7
B	10	92	116.0	113.7	1	-1.8
DK	11	92	116.2	109.9	2.5	-3.5
D	11	92	114.2	112.8	-2.6	-1.5
GR	11	92	102.7	97.3	-3.7	-2.0
E	09	92	108.9	108.7	-0.9	0.9
F	11	92	115.7	107.6	-1.5	-0.9
IRL	09	92	167.6	164.3	8.4	3.4
I	11	92	121.1	111.2	-3.3	-2.3
L	09	92	117.6	116.6	-4.6	-0.9
NL	11	92	120.0	108.0	0.6	1.1
P	10	92	118.9	115.0	-2.1	-2.6
UK	11	92	110.7	103.1	-0.4	2.4
USA	11	92	118.4	118.7	0.3	-0.2
J	10	92	125.4	120.8	-4.7	-0.9

**INVESTITIONSGÜTER**

**CAPITAL GOODS INDUSTRIES**

**BIENS D'INVESTISSEMENT**

EUR12	11	92	119.3	111.7	-4.3	-0.7
B	10	92	112.8	107.5	-8.3	-0.9
DK	11	92	105.0	98.4	-2.3	-5.3
D	11	92	122.3	117.7	-6.6	-1.4
GR	11	92	129.2	119.0	-8.6	-8.7
E	09	92	135.1	121.4	-1.0	3.2
F	11	92	103.1	99.2	-5.0	-1.6
IRL	09	92	236.7	235.0	16.2	1.9
I	11	92	118.0	105.4	-7.8	-3.0
L	09	92	113.9	108.1	-10.0	-3.5
NL	11	92	111.7	105.8	-0.9	-2.1
P	10	92	113.6	107.0	-8.8	-0.8
UK	11	92	117.5	111.1	-0.3	0.1
USA	11	92	119.5	119.6	1.0	0.7
J	10	92	125.2	127.2	-9.2	1.0

**VERBRAUCHSGÜTER**

**CONSUMER GOODS**

**BIENS DE CONSOMMATION**

EUR12	11	92	126.0	116.6	-0.9	-0.5
B	10	92	119.8	116.0	-0.3	-2.5
DK	11	92	111.9	107.3	2.0	-0.2
D	11	92	127.0	121.0	-1.6	-0.5
GR	11	92	103.7	101.5	-0.7	1.1
E	09	92	128.8	118.9	-2.1	0.3
F	11	92	129.0	120.2	0.5	0.4
IRL	09	92	149.7	148.2	10.5	6.4
I	11	92	125.8	116.4	-2.3	-0.3
L	09	92	129.7	141.9	11.1	-0.8
NL	11	92	132.0	122.3	-0.5	-1.4
P	10	92	132.1	124.5	-10.4	-7.6
UK	11	92	121.7	110.0	2.0	-0.5
USA	11	92	116.9	118.8	1.2	0.5
J	10	92	117.0	112.5	-4.4	-1.0

**UMSATZ**

**TURNOVER**

**CHIFFRE D'AFFAIRES**

**NACE 1-4**

GESAMTE INDUSTRIE OHNE BAUINDUSTRIE EUR12	09	92	TOTAL INDUSTRY EXCLUDING CONSTRUCTION 140.9	135.6	ENSEMBLE DE L'INDUSTRIE SANS BATIMENT 2.7	2.2
--	----	----	--	-------	--	-----

**ABHAENIG BESCHAEFTE**

**NUMBER OF EMPLOYEES**

**NOMBRE DE SALARIÉS**

**NACE 1-4**

GESAMTE INDUSTRIE OHNE BAUINDUSTRIE EUR12	III	92	TOTAL INDUSTRY EXCLUDING CONSTRUCTION 94.3	93.7	ENSEMBLE DE L'INDUSTRIE SANS BATIMENT -3.7	-1.4
--	-----	----	---	------	---	------

Z B(1) - Letzte 3 Monate gegenüber dem entsprechenden Vorjahreszeitraum  
- Last 3 months compared with corresponding months of previous year  
- Les 3 derniers mois par rapport aux mois correspondants de l'année précédente

Z A(2) - Letzte 3 Monate gegenüber den vorhergehenden 3 Monaten  
- Last 3 months compared with previous 3 months  
- Les 3 derniers mois par rapport aux 3 mois précédents



**PRODUKTIONSINDIZES - SAISONBEREINIGT**  
**INDICES OF PRODUCTION - SEASONALLY ADJUSTED**  
**INDICES DE PRODUCTION - DÉSAISONNALISÉS**

1985 = 100

	1989	1990	1991	1992							
				05	06	07	08	09	10		11
<b>NACE 1-4</b>				<b>TOTAL INDUSTRY EXCLUDING CONSTRUCTION</b>				<b>ENSEMBLE DE L'INDUSTRIE SANS BATIMENT</b>			
<b>GESAMTE INDUSTRIE OHNE BAUINDUSTRIE</b>											
EUR12	113.0	115.1	115.1	114.3	113.4	114.1	112.2	113.0	113.0	111.1	EUR12
B	112.7	117.7	115.3	119.1	116.7	113.8	116.4	112.9	114.0	:	B
DK	107.2	107.8	110.2	107.0	114.8	118.4	110.6	117.7	111.3	105.2	DK
D	112.1	117.9	121.2	120.5	119.4	118.5	119.1	119.6	116.7	116.6	D
GR	105.3	103.3	101.7	96.5	100.8	103.3	102.1	101.0	98.7	100.5	GR
E	116.1	116.2	115.0	110.6	113.1	114.7	111.2	113.7	:	:	E
F	112.0	114.1	114.3	112.6	112.6	112.7	112.8	112.6	113.7	109.8	F
IRL	137.4	143.8	148.7	159.1	152.6	163.2	164.7	170.0	:	:	IRL
I	118.6	117.8	115.4	118.2	114.4	114.7	112.2	110.4	113.1	111.9	I
L	118.6	118.0	118.6	122.5	113.2	113.4	113.9	119.1	:	:	L
NL	107.8	110.1	113.2	113.8	114.2	115.4	111.0	112.0	115.8	111.1	NL
P	124.1	135.3	135.1	135.1	134.2	133.9	124.7	129.8	127.7	:	P
UK	109.9	109.3	106.1	104.5	104.5	105.6	105.5	105.9	107.0	106.3	UK
USA	114.5	115.7	113.4	115.4	114.9	115.9	115.5	115.1	115.5	116.2	USA
J	119.7	125.3	128.2	119.4	122.0	122.9	118.2	122.9	120.6	:	J
<b>GRUNDSTOFFE U. PROD. GUETER</b>				<b>INTERMEDIATE GOODS</b>				<b>BIENS INTERMEDIAIRES</b>			
EUR12	110.8	111.3	111.1	110.7	109.4	110.5	109.3	109.3	109.8	107.9	EUR12
<b>INVESTITIONSGUETER</b>				<b>CAPITAL GOODS INDUSTRIES</b>				<b>BIENS D'INVESTISSEMENT</b>			
EUR12	117.8	121.6	119.9	117.0	116.8	115.0	112.6	116.4	113.8	111.7	EUR12
<b>VERBRAUCHSGUETER</b>				<b>CONSUMER GOODS</b>				<b>BIENS DE CONSOMMATION</b>			
EUR12	113.1	116.5	117.9	119.1	119.1	120.4	115.3	118.5	118.1	116.6	EUR12

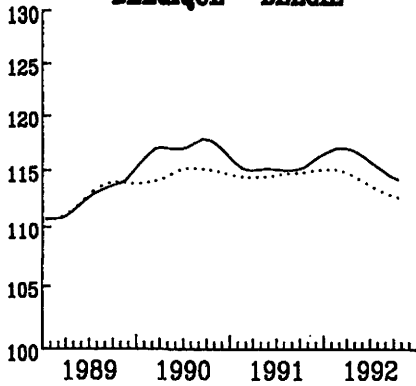
**INDUSTRIELLE PRODUKTION**  
LANGFRISTIGER TREND

**INDUSTRIAL PRODUCTION**  
LONG TERM TREND

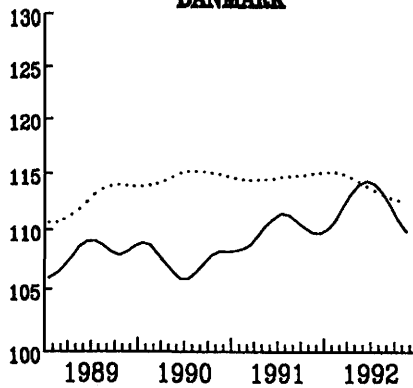
**PRODUCTION INDUSTRIELLE**  
TENDANCE A LONG TERME

NACE 1-4 1985=100

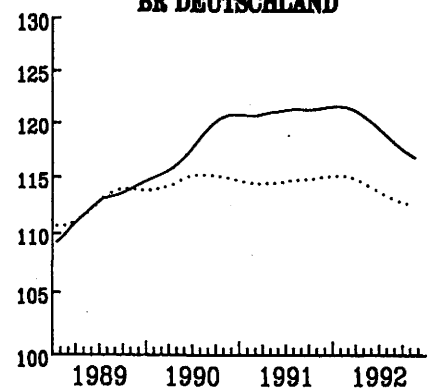
**BELGIQUE - BELGIE**



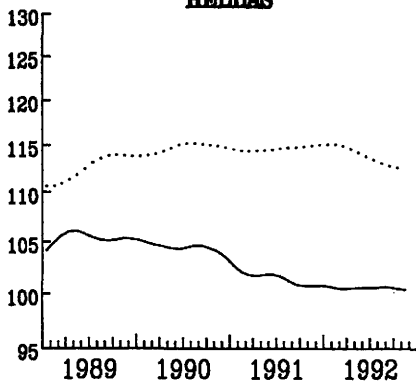
**DANMARK**



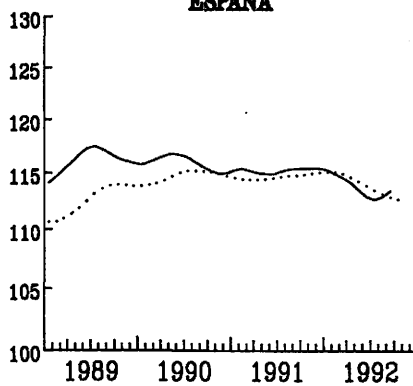
**BR DEUTSCHLAND**



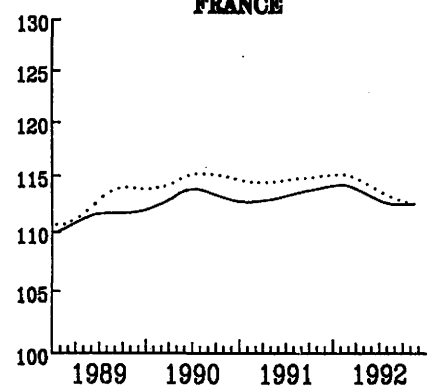
**HELLAS**



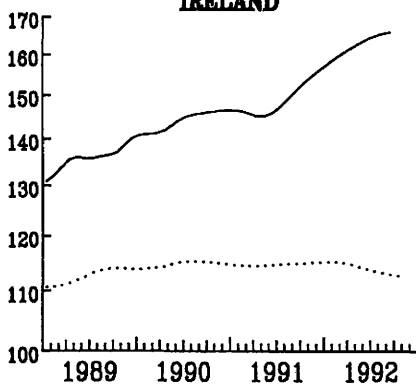
**ESPAÑA**



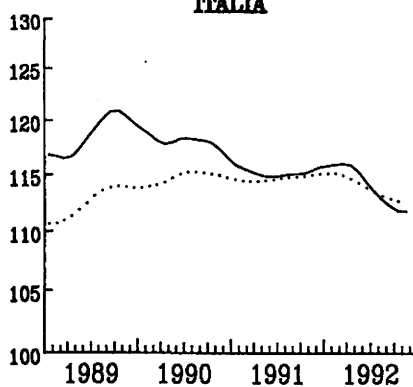
**FRANCE**



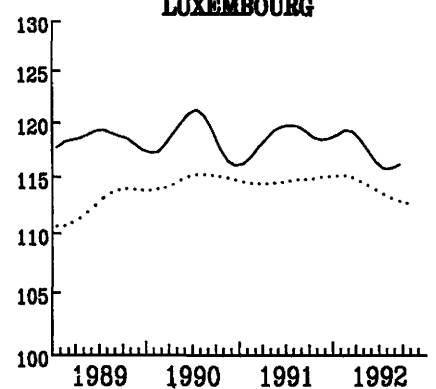
**IRELAND**



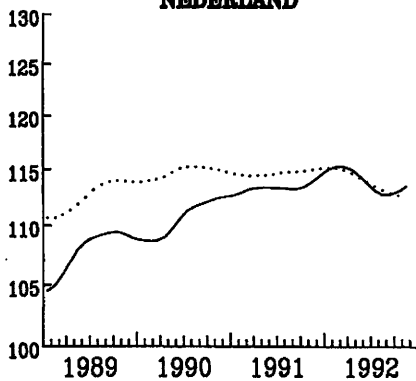
**ITALIA**



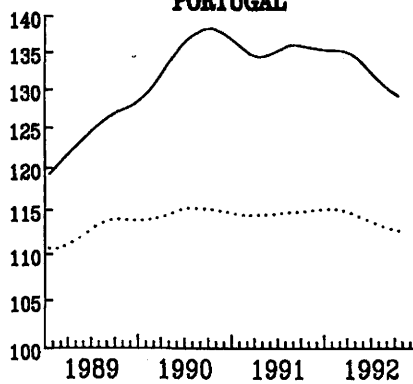
**LUXEMBOURG**



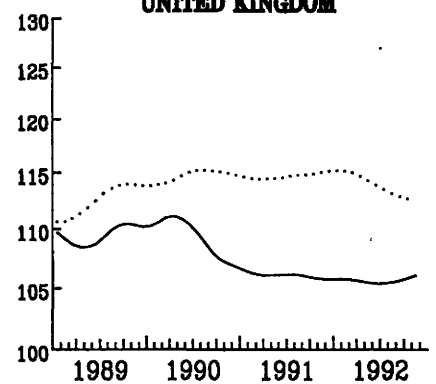
**NEDERLAND**



**PORTUGAL**



**UNITED KINGDOM**



..... EUR 12

EINFACH-LOGARITHMISCHE SKALA

SEMI-LOGARITHMIC SCALE

ECHELLE SEMI-LOGARITHMIQUE



**PRODUKTIONSINDIZES - PRO ARBEITSTAG**  
**INDICES OF PRODUCTION - PER WORKING DAY**  
**INDICES DE PRODUCTION - PAR JOUR OUVRABLE**

1985 = 100

	1989	1990	1991	1991			1992			
				09	10	11	09	10	11	

NACE 1-4

GESAMTE INDUSTRIE OHNE BAUINDUSTRIE

TOTAL INDUSTRY EXCLUDING CONSTRUCTION

ENSEMBLE DE L'INDUSTRIE SANS BATIMENT

EUR12	113.0	115.1	115.1	118.1	121.9	123.8	116.4	120.1	119.3	EUR12
B	112.7	117.7	115.3	121.1	117.5	126.3	118.5	117.0	:	B
DK	107.2	107.8	110.2	118.9	120.9	113.9	125.9	118.9	110.9	DK
D	112.1	117.9	121.2	124.9	132.4	127.8	123.6	127.4	120.2	D
GR	105.3	103.3	101.7	118.0	107.8	103.8	108.8	105.0	105.4	GR
E	116.1	116.2	115.0	119.7	130.3	124.0	119.1	:	:	E
F	112.0	114.1	114.3	112.5	117.2	122.0	112.2	117.2	117.3	F
IRL	137.4	143.8	148.7	154.5	156.1	166.6	171.1	:	:	IRL
I	118.6	117.8	115.4	124.1	120.7	128.8	118.0	119.8	121.8	I
L	118.6	118.0	118.6	120.1	117.3	125.8	118.9	:	:	L
NL	107.8	110.1	113.2	108.0	117.0	125.0	108.0	120.0	121.0	NL
P	124.1	135.3	135.1	139.6	139.7	140.8	132.8	132.3	:	P
UK	109.9	109.3	106.1	107.5	110.4	114.1	106.7	111.5	114.7	UK
USA	114.5	115.7	113.4	118.0	116.3	113.9	118.2	117.2	115.6	USA
J	119.7	125.3	128.2	130.7	130.3	129.6	125.2	123.1	:	J

GRUNDSTOFFE U. PROD. GUETER

INTERMEDIATE GOODS

BIENS INTERMEDIAIRES

EUR12	110.8	111.3	111.1	111.7	117.0	119.0	110.4	115.7	115.6	EUR12
-------	-------	-------	-------	-------	-------	-------	-------	-------	-------	-------

INVESTITIONSGUETER

CAPITAL GOODS INDUSTRIES

BIENS D'INVESTISSEMENT

EUR12	117.8	121.6	119.9	123.5	124.6	127.6	121.0	119.2	119.3	EUR12
-------	-------	-------	-------	-------	-------	-------	-------	-------	-------	-------

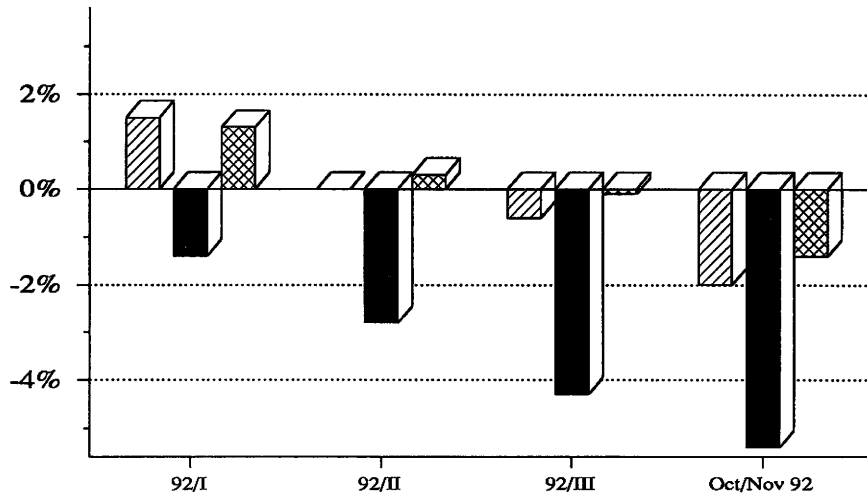
VERBRAUCHSGUETER

CONSUMER GOODS

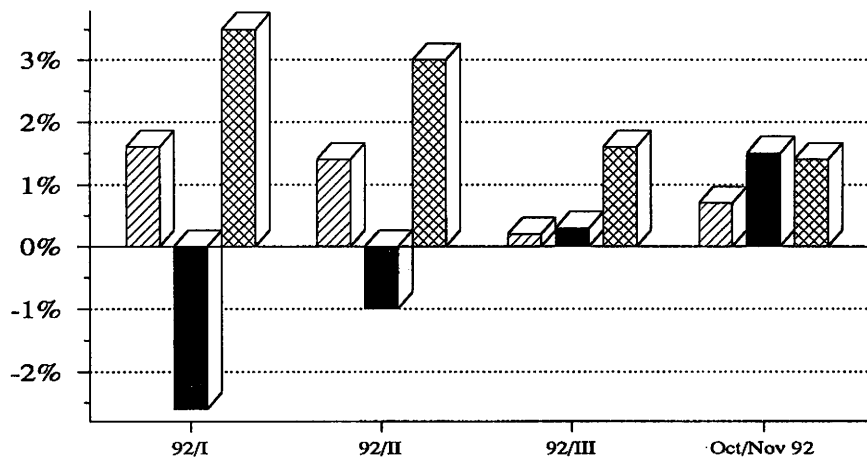
BIENS DE CONSOMMATION

EUR12	113.1	116.5	117.9	126.0	129.4	129.1	126.1	128.9	126.0	EUR12
-------	-------	-------	-------	-------	-------	-------	-------	-------	-------	-------

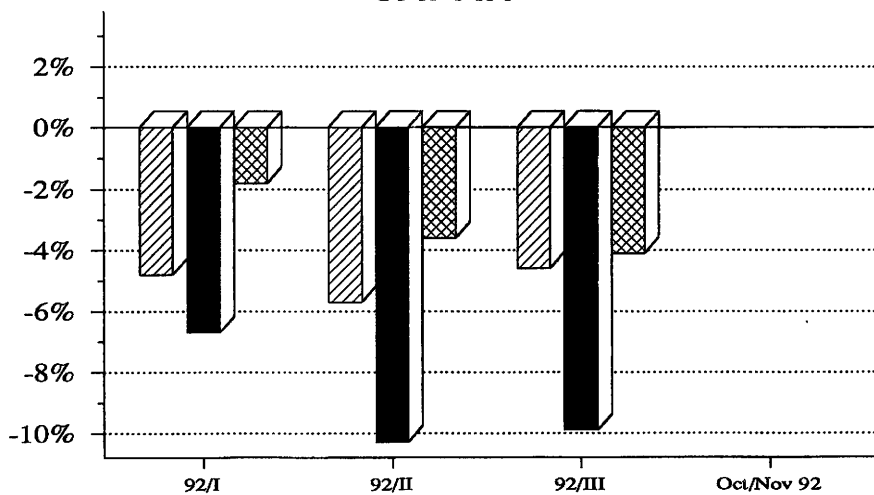
**EUR 12**






**USA**



**JAPAN**



	Grundstoffe und Produktionsgüter	Intermediate goods	Biens intermédiaires
	Investitionsgüter	Capital goods	Biens d'investissement
	Verbrauchsgüter	Consumption goods	Biens de consommation



# ERZEUGERPREISINDEX

# PRODUCER PRICE INDEX

# INDICE DES PRIX A LA PRODUCTION

EUR 12 - 1985 = 100

IN LANDESWAEHRUNGEN

- Industrie NACE 1-4
- Rohstoffe und Halbwaren
- - - Investitionsgueter
- ..... Verbrauchsgueter

IN ECU

- - - Industrie NACE 1-4

BASED ON NATIONAL CURRENCIES

- Industry NACE 1-4
- Intermediate Goods
- Capital Goods
- Consumer Goods

IN ECU

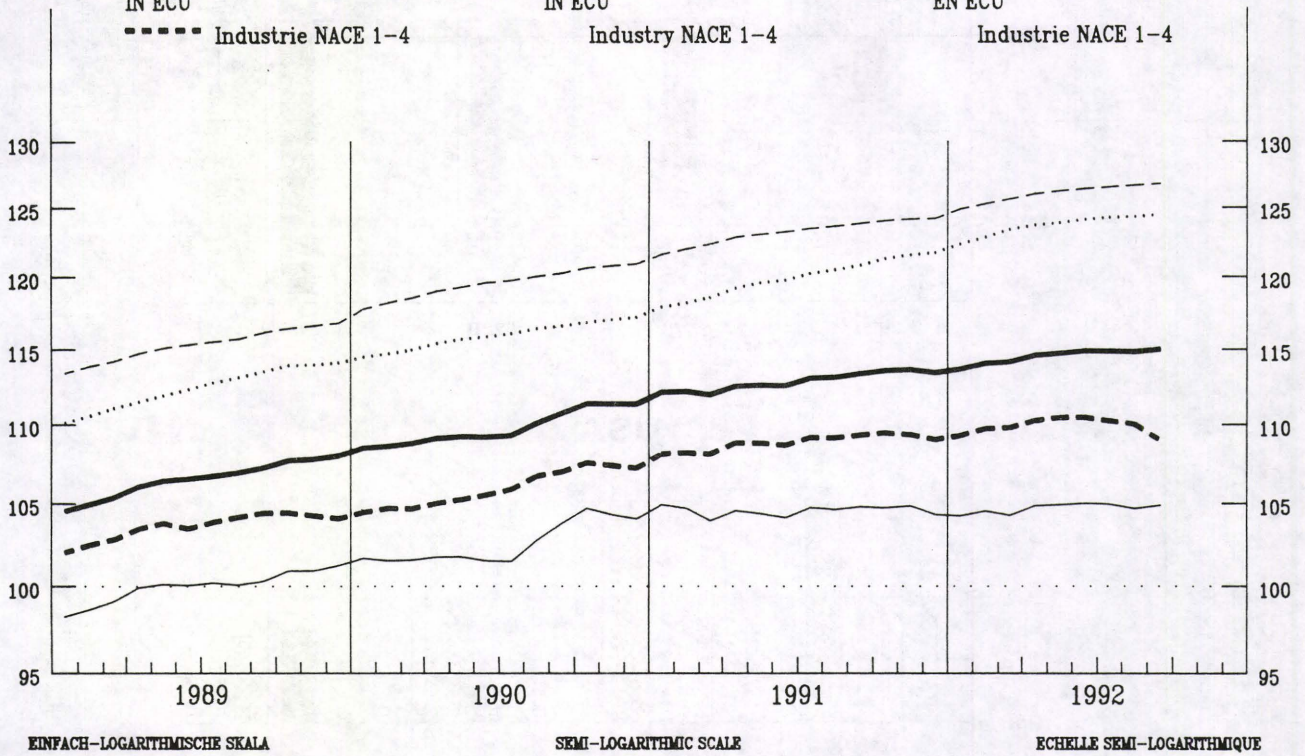
- - - Industry NACE 1-4

BASE SUR MONNAIES NATIONALES

- Industrie NACE 1-4
- Biens Intermediaires
- Biens d'Investissement
- Biens de Consommation

EN ECU

- - - Industrie NACE 1-4



## VERAENDERUNG % T/T-12

## VARIATION % T/T-12

## VARIATION % T/T-12

— IN LANDESWAEHRUNGEN

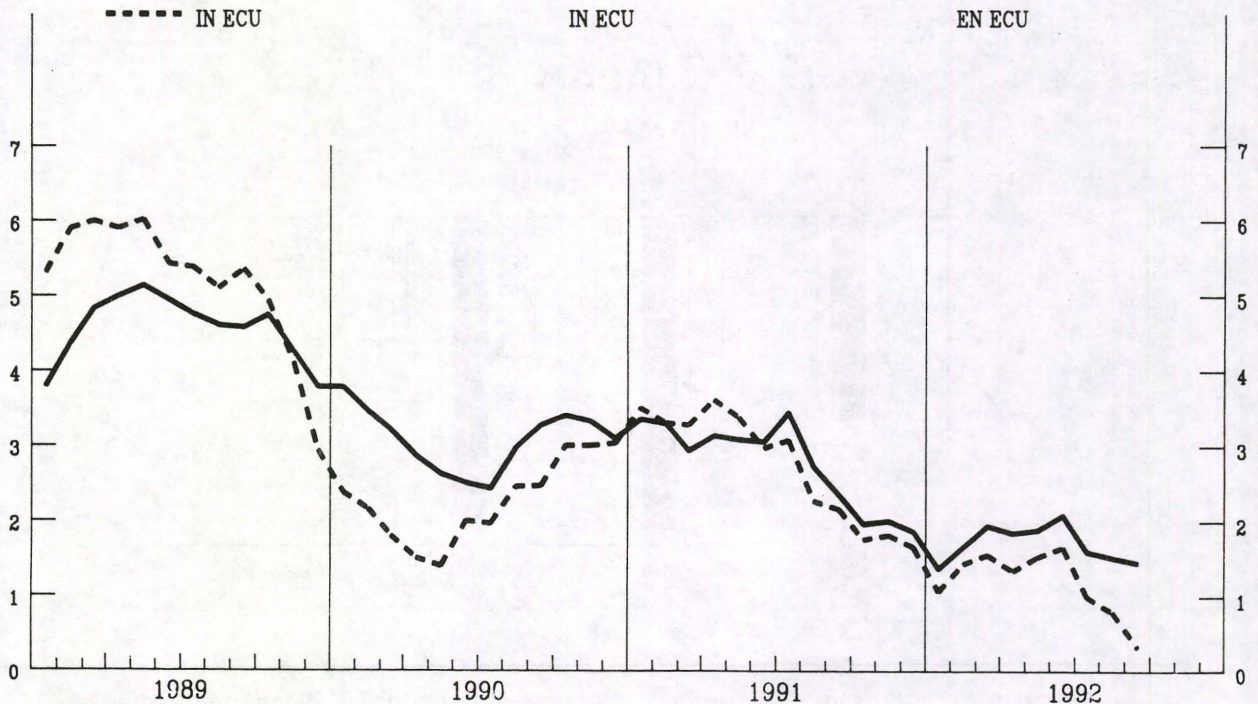
BASED ON NATIONAL CURRENCIES

BASE SUR MONNAIES NATIONALES

- - - IN ECU

IN ECU

EN ECU





**GESAMTE INDUSTRIE OHNE BAUINDUSTRIE**  
**TOTAL INDUSTRY EXCLUDING CONSTRUCTION**  
**ENSEMBLE DE L'INDUSTRIE SANS BATIMENT**  
**NACE 1-4**  
**PREISINDIZES - PRICE INDICES - INDICES DE PRIX**

1985 = 100

	1990	1991	1992							Letzte Zahl Latest figure Dernier chiffre	
			05	06	07	08	09	10	11	%	%
										T/T-12	T/T-1

IN LANDESWAHRUNG

IN NATIONAL CURRENCY

EXPRIMÉS EN MONNAIE NATIONALE

	1990	1991	05	06	07	08	09	10	11	%	%	
EUR12	109.8	112.9	114.7	114.9	114.9	114.8	115.0	:	:	1.5	0.2	EUR12
B	93.6	92.6	93.5	93.7	93.3	92.3	92.8	92.8	92.7	-0.5	-0.1	B
DK	108.8	110.0	110.0	110.0	108.0	108.0	108.0	108.0	108.0	-2.7	0.0	DK
D	101.0	103.4	105.1	105.2	105.1	105.1	105.1	104.9	104.8	0.5	-0.2	D
GR	189.0	221.5	242.0	243.1	244.0	252.0	257.3	261.3	263.0	13.5	0.7	GR
E	111.5	113.2	114.7	115.0	114.9	114.8	114.7	:	:	1.2	-0.0	E
F (1)	107.5	108.5	109.3	109.4	109.4	109.3	109.2	:	:	0.6	-0.1	F (1)
IRL	113.0	114.3	116.6	116.6	117.1	116.9	116.9	117.2	117.2	2.1	0.3	IRL
I	117.8	121.7	123.7	123.9	123.9	123.9	124.2	124.6	125.1	2.2	0.4	I
L	98.8	96.2	94.5	94.9	93.9	93.9	93.4	92.7	91.9	-3.8	-0.9	L
NL	87.3	89.7	90.1	90.2	90.4	90.3	90.1	90.0	90.0	0.0	0.0	NL
P	:	:	:	:	:	:	:	:	:	:	:	P
UK	117.6	122.9	125.9	126.1	126.3	126.0	126.6	126.9	127.7	3.4	0.0	UK

IN ECU

IN ECU

EXPRIMÉS EN ECU

	1990	1991	05	06	07	08	09	10	11	%	%	
EUR12	106.0	108.8	110.5	110.5	110.2	110.0	109.0	:	:	-0.3	-1.0	EUR12
B	99.1	98.4	99.3	99.7	99.6	98.9	100.9	103.0	103.0	3.5	-0.1	B
DK	111.1	111.5	111.1	111.7	110.1	110.3	111.5	114.3	114.4	1.9	0.1	DK
D	109.6	112.3	113.9	114.2	114.6	115.0	116.7	118.9	118.7	4.5	0.2	D
GR	98.2	103.0	104.2	102.4	102.0	105.0	106.9	107.4	107.8	2.6	0.4	GR
E	111.2	113.7	115.1	114.9	114.0	113.3	109.7	:	:	-3.5	-3.2	E
F (1)	105.7	105.7	107.5	107.7	107.8	107.6	108.8	:	:	2.9	1.1	F (1)
IRL	105.3	106.4	108.4	108.6	109.3	109.0	110.0	112.2	112.5	5.2	0.7	IRL
I	112.0	114.8	115.6	115.6	115.8	116.0	111.1	104.1	107.1	-7.0	2.8	I
L	104.6	102.4	100.3	100.9	100.3	100.7	101.5	103.0	102.0	0.0	-0.9	L
NL	94.9	97.4	97.8	98.0	98.6	98.9	100.2	102.3	102.2	4.0	-0.1	NL
P	:	:	:	:	:	:	:	:	:	:	:	P
UK	97.1	103.2	105.9	105.6	104.2	102.6	99.7	93.4	92.7	-7.6	1.6	UK

(1) Schätzung - Estimation Eurostat



GESAMTE INDUSTRIE OHNE BAUINDUSTRIE  
TOTAL INDUSTRY EXCLUDING CONSTRUCTION  
ENSEMBLE DE L'INDUSTRIE SANS BATIMENT

NACE 1-4

1985 = 100

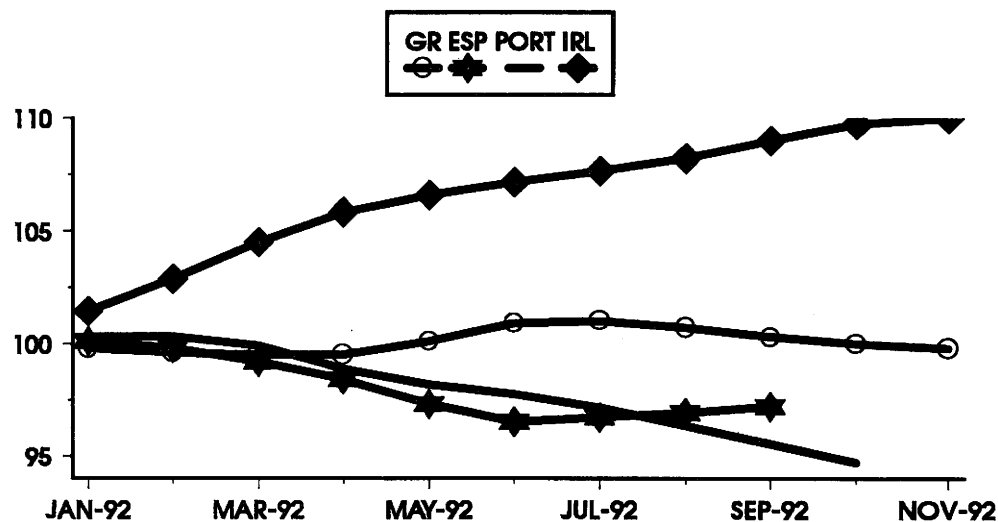
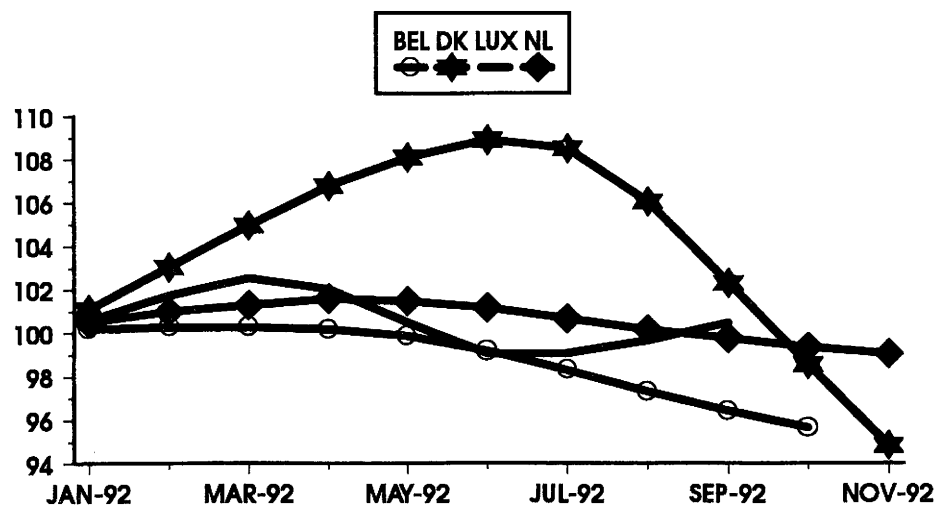
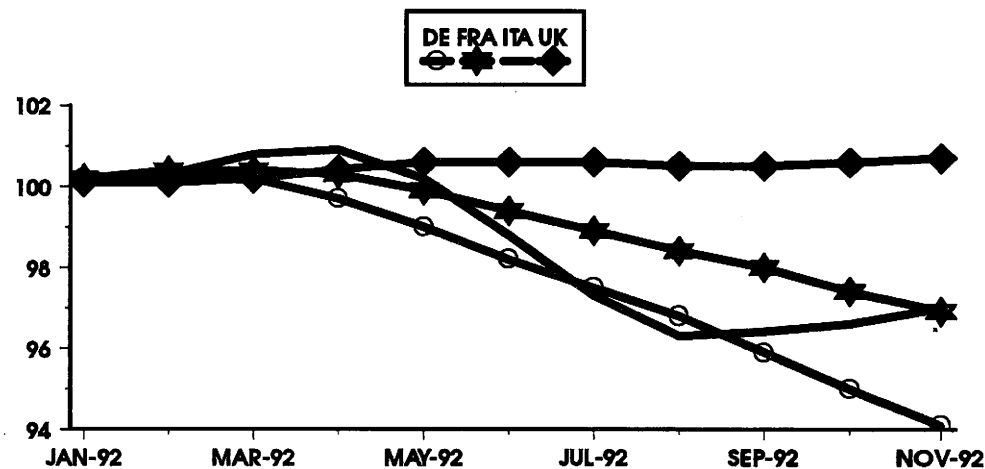
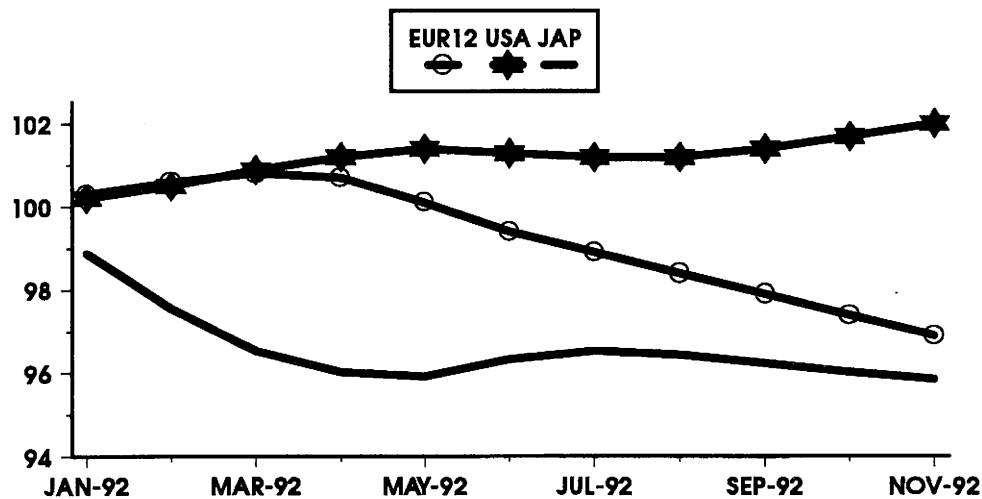
	EUR12	B	DK	D(WEST)	GR	E	F	IRL	I	L	NL	P	UK
<b>PRODUKTIONSINDIZES</b>													
<b>INDICES OF PRODUCTION</b>													
<b>INDICES DE PRODUCTION</b>													
1986	102.4	100.8	106.5	102.4	99.8	103.1	100.9	102.2	104.1	102.1	100.2	107.3	102.4
1987	104.4	103.0	102.8	102.7	98.1	107.9	102.8	111.2	106.8	101.2	101.1	112.0	105.7
1988	109.0	108.9	104.8	106.5	103.7	111.1	107.6	123.1	114.2	110.0	103.6	116.2	109.5
1989	113.0	112.7	107.2	112.1	105.3	116.1	112.0	137.4	118.6	118.6	107.8	124.1	109.9
1990	115.1	117.7	107.8	117.9	103.3	116.2	114.1	143.8	117.8	118.0	110.1	135.3	109.3
1991	115.1	115.3	110.2	121.2	101.7	115.0	114.3	148.5	115.4	118.6	113.2	135.1	106.1
<b>UMSATZ</b>													
<b>TURNOVER</b>													
<b>CHIFFRE D'AFFAIRES</b>													
<b>Saisonbereinigt</b>													
<b>Seasonally adjusted</b>													
<b>Desaisonnalisés</b>													
1991 10	131.8	128.7	131.4	130.0		130.0	144.7	148.2	114.3	101.5			128.7
11	129.5	121.1	119.1	131.2		126.2	147.1	142.3	108.5	101.7			129.5
12	128.8	120.5	124.8	130.8		127.8	144.1	144.6	107.7	102.0			129.3
1992 01	129.3	122.8	121.6	129.6		128.3	150.4	140.9	112.8	102.5			126.1
02	131.0	122.6	124.2	131.1		128.2	153.4	143.9	113.0	102.9			129.8
03	131.5	124.1	124.6	133.3		127.1	151.8	144.2	113.6	103.3			132.4
04	131.3	130.4	122.3	131.6		128.2	154.6	149.5	113.7	100.3			128.1
05	127.7		121.1	130.8		124.4	157.9	137.0	112.7	100.5			128.9
06	130.5		128.2	132.2		126.0	153.1	144.6	110.0	100.7			131.3
07	136.1		126.4	129.4		129.0	151.6	149.3	111.0				132.5
08	126.4		121.9	130.1		124.1	151.6	135.3	107.9				130.6
09	135.6		129.4	132.4		129.4	154.2	146.7	115.2				130.7
10			117.4	127.7				143.1					132.1
11			117.2	128.2									132.8
<b>AUSFUHR</b>													
<b>EXPORTS</b>													
<b>EXPORTATIONS</b>													
<b>Mengen, Saisonbereinigt</b>													
<b>Volumes, seasonally adjusted</b>													
<b>En volume, dsaisonnalisés</b>													
1991 10	105.8		133.2	114.8	134.6	155.6	148.1	158.9	106.9		130.6	194.7	122.9
11	102.5		131.3	117.7	136.9	139.1	136.3	161.5	100.6		126.2	174.3	115.7
12	101.2		128.4	114.1	113.7	138.6	132.2	148.0	108.7		122.9	174.8	123.6
1992 01	98.4		146.9	110.8	148.9	125.4	135.1	164.8	109.3		132.3	200.4	114.9
02	98.4		148.2	113.1	191.0	147.8	134.7	172.9	106.5		130.4	193.3	116.4
03	98.6		153.0	115.1	159.1	137.8	137.7	153.3	107.8		122.5	169.3	115.4
04	101.1		140.9	118.8	143.1	133.7	139.0	158.4	105.1		131.1	192.7	116.2
05	92.4		140.9	102.9	158.6	134.8	129.2	173.8	101.5		114.0	173.4	116.0
06	93.1		153.8	100.0	117.2	139.9	134.3	163.2	100.7		119.5	123.0	115.7
07	99.8		146.6	112.5	197.3	136.9	133.9	177.4	104.3		126.4	196.1	120.6
08	90.5		143.3	103.2	132.3	124.8	124.3	172.2	100.6		107.1	169.6	108.9
09	100.5		157.5	111.9	127.5	142.3	140.1	140.0	104.0		125.0	181.1	116.6
<b>EINFUHR</b>													
<b>IMPORTS</b>													
<b>IMPORTATIONS</b>													
<b>Mengen, Saisonbereinigt</b>													
<b>Volumes, seasonally adjusted</b>													
<b>En volume, dsaisonnalisés</b>													
1991 10	162.0		121.4	169.7	129.0	267.4	157.0	146.6	136.3		136.6	297.9	119.8
11	160.1		114.8	168.1	199.7	260.5	149.9	145.0	128.7		129.2	256.9	117.8
12	157.3		114.1	161.6	143.6	246.9	155.7	138.6	128.7		133.6	283.1	121.4
1992 01	159.3		129.2	170.4	135.7	250.2	148.1	133.4	132.5		139.1	260.3	115.3
02	159.4		128.8	168.7	145.1	256.8	152.4	134.4	136.8		135.0	285.2	123.4
03	161.3		139.3	169.8	115.4	264.6	155.7	129.2	135.6		131.4	310.2	120.7
04	159.2		135.0	174.0	159.8	249.4	151.1	131.4	132.1		133.6	310.2	124.8
05	147.9		121.0	155.8	140.8	256.1	139.6	120.7	129.3		120.6	284.0	119.8
06	150.7		128.2	149.6	142.5	252.6	155.1	132.8	133.2		128.3	227.1	120.4
07	156.6		126.7	170.4	162.1	265.6	149.4	134.4	129.9		133.9	280.7	124.2
08	141.6		116.3	146.5	123.7	235.9	143.1	132.4	116.0		118.4	316.4	117.8
09	158.7		134.2	163.3	136.2	255.6	161.9	125.1	131.4		130.4	301.9	124.2
<b>ERZEUGERPREISINDIZES</b>													
<b>PRODUCER PRICE INDICES</b>													
<b>INDICE DE PRIX A LA PRODUCTION</b>													
1991 10	113.6	93.4	111.0	104.4	232.2	113.6	108.7	114.8	122.2	95.9	90.0		123.7
11	113.6	93.2	111.0	104.3	231.8	113.8	108.7	114.9	122.4	95.5	90.0		123.7
12	113.4	92.1	111.0	104.1	230.8	113.6	108.8	115.1	122.2	94.7	89.8		123.5
1992 01	113.7	92.1	109.0	104.0	234.4	114.0	108.9	115.1	122.9	94.0	89.9		124.0
02	114.1	92.4	109.0	104.3	235.2	114.3	108.9	115.7	123.3	94.2	90.0		124.9
03	114.2	92.6	109.0	104.6	239.0	114.2	109.0	116.4	123.3	94.2	90.1		124.7
04	114.6	93.1	109.0	104.9	240.7	114.6	109.1	116.5	123.7	94.9	90.1		126.0
05	114.7	93.5	110.0	105.1	242.0	114.7	109.3	116.6	123.7	94.5	90.1		125.9
06	114.9	93.7	110.0	105.2	243.1	115.0	109.4	116.6	123.9	94.9	90.2		126.1
07	114.9	93.3	108.0	105.1	244.0	114.9	109.4	117.1	123.9	93.9	90.4		126.3
08	114.8	92.3	108.0	105.1	252.0	114.8	109.3	116.9	123.9	93.9	90.3		126.0
09	115.0	92.8	108.0	105.1	257.3	114.7	109.2	116.9	124.2	93.4	90.1		126.6
10		92.8	108.0	104.9	261.3			117.2	124.6	92.7	90.0		126.9
11		92.7	108.0	104.8	263.0			117.2	125.1	91.9	90.0		127.7
12			104.6	104.6				117.5					127.7
<b>ABHAENIG BESCHAEFFTIGTE</b>													
<b>NUMBER OF EMPLOYEES</b>													
<b>NOMBRE DE SALARIES</b>													
<b>Saisonbereinigt</b>													
<b>Seasonally adjusted</b>													
<b>Dsaisonnalisés</b>													
1990 I	100.3	96.9	99.3	105.7	103.5	115.4	95.4	99.3	87.4	96.2	104.8	96.2	101.1
II	100.3	96.5	99.5	106.3	102.4	115.0	95.5	99.8	87.0	95.9	105.2	95.4	100.9
III	100.1	96.5	99.5	107.0	99.1	115.1	95.6	100.3	86.7	95.2	105.7	94.8	99.5
IV	99.9	96.7	99.1	107.8	96.6	114.4	95.3	100.8	86.1	94.8	106.2	95.3	98.6
1991 I	99.3	96.5	98.0	108.4	99.3	112.5	94.7	100.6	85.5	94.6	106.3	93.5	96.5
II	98.4	95.8	97.4	108.4	94.7	111.3	94.0	100.4	84.7	94.1	106.1	91.7	94.6
III	97.4	95.4	96.8	108.2	92.3	111.1	93.6	100.2	84.0	94.6	105.7	90.6	91.7
IV	96.7	95.1	96.0	107.8	89.7	110.8	92.8	100.8	83.2	95.3	105.4	89.6	90.4
1992 I	95.8	93.5	95.5	107.1	88.6	110.4	92.2	100.6	81.8	95.4	106.0	86.4	89.5
II	95.1		95.4	106.2	90.1	109.8	91.7		80.5	95.4	105.7	84.3	89.0
III	93.7		95.4	105.0		107.9	91.4		79.0	95.3			86.5



# Trends im Verarbeitenden Gewerbe 1992

## Trends in Manufacturing 1992

### Tendance dans l'industrie manufacturière





**PRODUKTIONSINDIZES - BE- UND VERARBEITENDES GEWERBE**  
**PRODUCTION INDICES - MANUFACTURING INDUSTRIES**  
**INDICES DE PRODUCTION - INDUSTRIES MANUFACTURIERES**

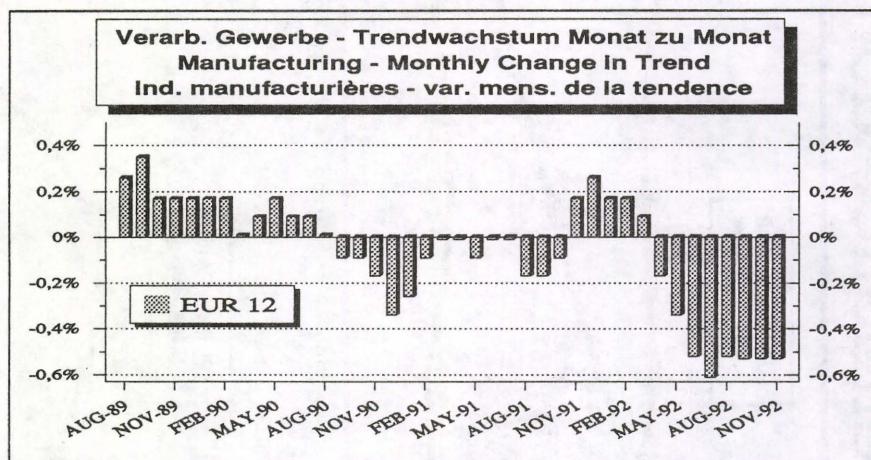
**Veränderungsraten von Monat zu Monat (in Prozent)**  
**Month to month change (in percent)**  
**Variation (en pourcent) de mois en mois**

**Saisonbereinigte Werte - seasonally adjusted values - valeurs corrigées de var. saisonnières**

	02/92	03/92	04/92	05/92	06/92	07/92	08/92	09/92	10/92	11/92	
EUR12	1.6	-0.4	-1.1	0.5	-1.2	0	-1.6	0.8	-0.6	-1	EUR12
B	2	-2	0.2	2.5	-2.4	-3	1	-1.3	0.1		B
DK	2.1	3.4	-1.6	-7.9	12.1	1.9	-7.4	7.6	-9.5	-4.9	DK
D	1.5	-1.4	-1.1	0.6	-2	0.2	-1.2	2.5	-3.6	-1.6	D
GR	-2.8	-0.5	0.9	-1.6	2.1	1.1	1.2	-5.5	0.5	3.2	GR
E	4.4	0.1	-5	-1.1	1.7	1.1	-3.8	3.5			E
F	0.5	-0.2	0	-0.4	-0.2	-1.6	0	0.4	-0.6	-1.4	F
IRL	0.9	0	3.7	-1.5	-7.4	10.4	-1.3	2.6			IRL
I	0.5	0	-2.3	3.9	-4.3	0.5	-6.5	3.4	2.1	-0.2	I
L	6.6	0.8	-5.1	10.1	-10.8	1	-0.9	5.2			L
NL	2.1	-2.4	2.2	-1.3	0	1.2	-3.3	0.5	0.9	-1.2	NL
P	0.9	-4	-0.2	0	-0.5	1.5	-7	3.7	-0.6		P
UK	1.9	-0.6	-0.5	0.9	0.6	-0.5	-0.6	-0.5	1.2	-0.4	UK
USA	0.6	1	-0.4	0.5	-0.5	0.2	0	-0.3	0.4	1	USA
JAP	-1.1	-1.7	0.1	-1.2	1.6	-0.2	-3.1	3.7	-1.6		JAP

**Langfristiger Trend - long term trend - tendance à long terme**

	02/92	03/92	04/92	05/92	06/92	07/92	08/92	09/92	10/92	11/92	
EUR12	0.1	0.1	-0.1	-0.4	-0.5	-0.5	-0.5	-0.5	-0.5	-0.5	EUR12
B	0.2	0	-0.2	-0.5	-0.5	-0.8	-0.8	-0.8	-0.8		B
DK	1.4	1.8	1.5	1	0.2	-1	-2.5	-2.6	-2.8	-2.8	DK
D	0	-0.2	-0.5	-0.5	-0.6	-0.6	-0.8	-0.8	-0.8	-0.9	D
GR	-0.2	-0.1	0.1	0.2	0.1	-0.1	-0.2	-0.2	-0.2	-0.2	GR
E	-0.5	-0.5	-0.5	-0.6	-0.4	-0.2	-0.2	-0.2			E
F	0.2	0	-0.2	-0.2	-0.4	-0.5	-0.5	-0.5	-0.5	-0.5	F
IRL	1.2	1	0.8	0.6	0.5	0.5	0.5	0.5			IRL
I	0.2	0.1	-0.1	-0.6	-1.1	-0.9	-0.5	-0.4	-0.2	-0.2	I
L	0.5	0	-0.5	-0.5	-0.5	-0.4	-0.2	-0.1			L
NL	0.4	0.4	0.2	-0.1	-0.2	-0.4	-0.4	-0.4	-0.4	-0.4	NL
P	-0.1	-0.2	-0.5	-0.8	-0.6	-0.6	-0.6	-0.6	-0.6		P
UK	0.1	0.2	0.2	0.1	0	0	0	0	0	0	UK
USA	0.2	0.2	0.2	0.2	0	0	0.1	0.1	0.1	0.2	USA
JAP	-1.1	-0.9	-0.5	-0.2	0.1	0.1	0	0	0		JAP



Saisonbereinigte Reihen enthalten irreguläre Effekte und Ausreißer, die die langfristige Konjunkturentwicklung überdecken. Der langfristige Trend dagegen zeigt allein die Richtung der konjunkturellen Entwicklung. Er wird durch mehrmalige Anwendung gleitender Durchschnitt berechnet, wodurch die irregulären Effekte eliminiert werden. Am aktuellen Rand können allerdings Fehlinterpretationen nicht ausgeschlossen werden, da hier die gleitenden Durchschnitte geschätzt werden müssen.

Seasonally adjusted series still contain irregularities and outliers which mask longer-term trends. Only the long-term trend, however, is an adequate indicator of economic evolution. It is calculated with the aid of repeatedly computing moving averages, thus eliminating the irregularities. As regards the latest figures, however, false interpretations cannot be ruled out, since here the moving averages have to be estimated.

Des séries corrigées des variations saisonnières contiennent toujours des effets irréguliers et des valeurs aberrantes qui masquent l'évolution conjoncturelle à long terme. En revanche, la tendance à long terme ne montre que l'orientation de l'évolution conjoncturelle. La tendance est déterminée à l'aide de calculs répétés de moyennes mobiles, qui permettent d'éliminer les effets irréguliers. Néanmoins, il n'est pas exclu que les toutes dernières valeurs donnent lieu à des erreurs d'interprétation car ici les moyennes mobiles doivent être estimées.