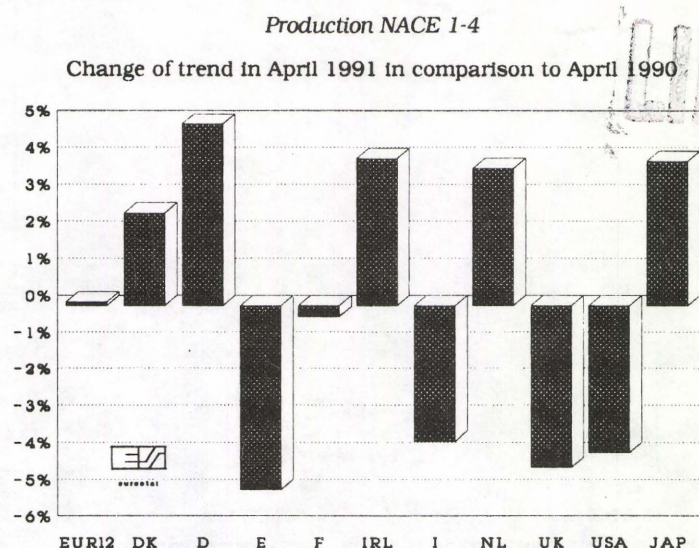


### Industrial Trends - July 1991



### Stagnation of European industrial production

In April 1991 there was still **no sign of an upturn** in industrial production in the European Community (EUR12). On the contrary, all indicators point to **continuing stagnation**. The EUR12 production index adjusted for the number of working days is currently estimated at 116.3 (1985=100) for April 1991, which is 0.4 % down on April 1990. After seasonal adjustment the estimated April index is 113.7 for the European Community, compared with 112.9 in March of this year, i.e. up +0.7 % in one month. If the seasonally adjusted production index for the last three months February, March, April is compared with the three months before, it appears that **the production level has hardly moved** (-0.7%).

In the **USA** the downward trend in industrial production is much more marked, with a year-on-year decrease of 3.5 % in April 1991, while in **Japan** growth continues, with a year-on-year increase in the production index of 3.7 % in the same month.

Compared with the autumn months, there was still some growth in sectors such as energy and water (+3.1 %) and the food industry (+0.5 %). There was zero growth in the electrical industry (+0.4 %), the metal products industry (-0.3 %) and the chemical industry (-0.7 %), while the trend in production was downward in engineering (-2.2 %), the automobile industry (-1.5 %), the textile industry (-1.8 %) and in the clothing industry (-2.2 %).

There were **noticeable differences** in industrial growth between the **Member States** of the EC: compared with autumn 1990, there is no growth in any EC Member State for the seasonally adjusted production index for industry as a whole (NACE 1-4). There was stagnation in Germany (+0.4 %) [only former Federal Republic territory], in Ireland (0.4 %) [estimated], in Denmark (0.0 %), in the Netherlands (-0.2 %) [estimated], in France (-0.6 %). The figures for the United Kingdom (-1.1 %), Italy (-1.2 %) and Spain (-5 %) reflect recession.

Manuscript completed on = 10.07.1991

For further information please contact: M. B. FELDMANN  
Eurostat, L-2920 Luxembourg, tel. 4301-4401 Fax: 4301 4771

Price (excl. VAT) in Luxembourg: Subscription ECU 160

Catalogue number: CA-NL-91-013-EN-C

**INDUSTRIELLE PRODUKTION**

**INDUSTRIAL PRODUCTION**

**PRODUCTION INDUSTRIELLE**

GLEITENDE 3-MONATSDURCHSCHNITTE

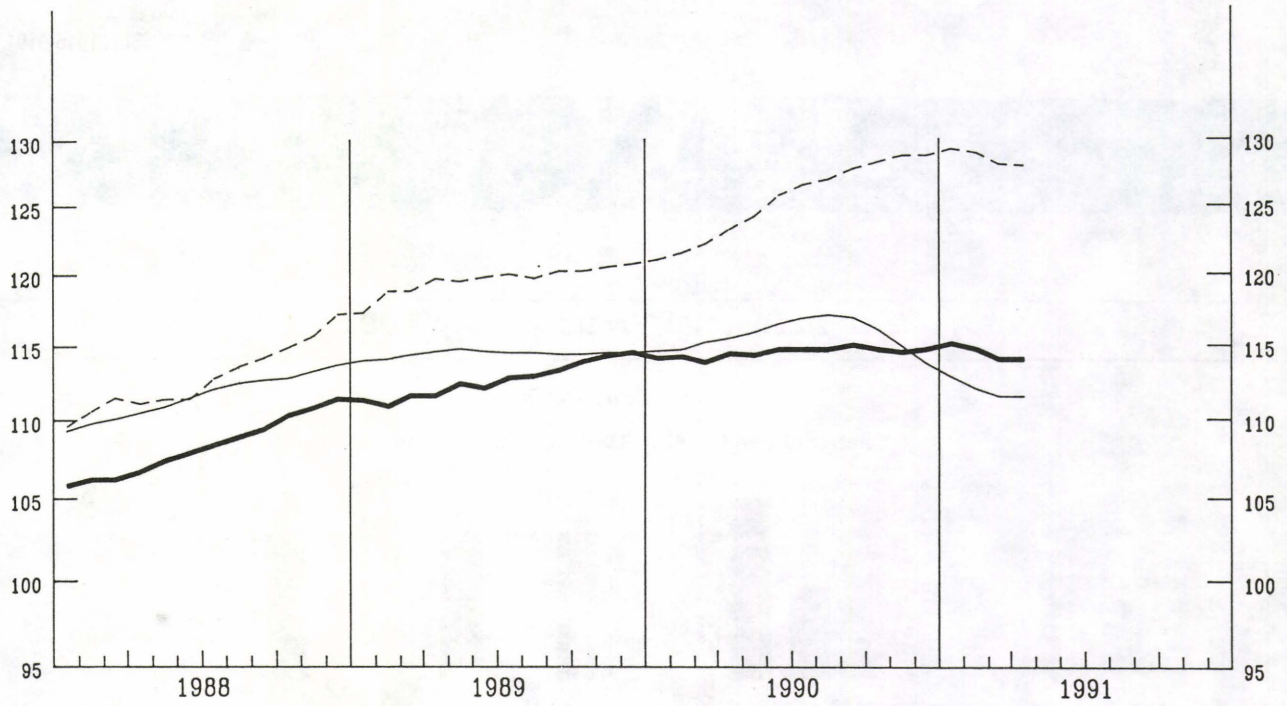
3 MONTH MOVING AVERAGE

MOYENNE MOBILE SUR 3 MOIS

**NACE 1-4**

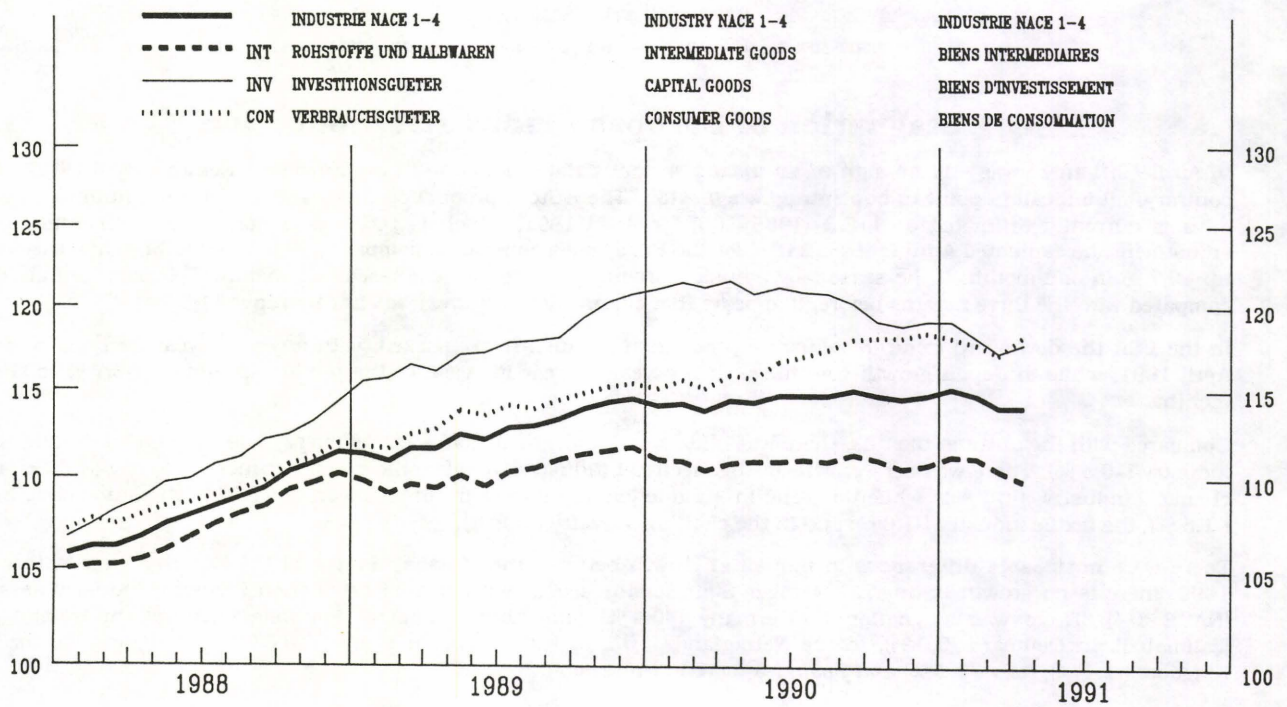
1985 = 100

— USA      — EUR 12      - - - JAPAN



**EUR 12**

1985 = 100



EINFACH-LOGARITHMISCHE SKALA

SEMI-LOGARITHMIC SCALE

ECHELLE SEMI-LOGARITHMIQUE

# BASISINDIKATOREN

## BASIC INDICATORS

### INDICATEURS DE BASE

1985 = 100

	Letzte Zahl / Latest figure / Dernier chiffre			Veränderung / Change / Variation	
	Zeitraum Period Période	Pro Arbeitstag Per working day Par jour ouvrable	Saisonbereinigt Seasonally adjusted Désaisonnalisés	Pro Arbeitstag Per working day Par jour ouvrable %B (1)	Saisonbereinigt Seasonally adjusted Désaisonnalisés %A (2)
<b>PRODUKTIONSINDEZES</b>					
<b>INDICES OF PRODUCTION</b>					
<b>INDICES DE PRODUCTION</b>					
<b>NACE 1-4</b>					
<b>GESAMTE INDUSTRIE OHNE BAUINDUSTRIE</b>		<b>TOTAL INDUSTRY EXCLUDING CONSTRUCTION</b>		<b>ENSEMBLE DE L'INDUSTRIE SANS BATIMENT</b>	
	EUR12 04 91	116.3	113.7	0.1	-0.7
B	01 91	116.8	115.3	1.0	-0.3
DK	04 91	109.9	112.0	-0.3	-0.0
D	04 91	122.6	122.4	5.2	0.4
GR	02 91	100.2	101.1	-2.7	1.8
E	03 91	112.8	106.5	-4.0	-1.5
F	04 91	116.7	111.9	0.1	-0.6
IRL	03 91	154.1	145.3	4.8	1.5
I	04 91	120.1	112.6	-3.3	-1.2
L	01 91	112.2	113.3	-1.6	-2.7
NL	03 91	113.0	107.8	7.2	1.4
P	12 90	138.8	138.4	8.2	1.0
UK	04 91	104.0	104.1	-4.0	-1.1
USA	04 91	110.0	111.3	-3.3	-2.1
J	04 91	127.6	127.2	4.8	-0.2
<b>INT</b>					
<b>GRUNDSTOFFE U. PROD. GUETER</b>		<b>INTERMEDIATE GOODS</b>		<b>BIENS INTERMEDIAIRES</b>	
	EUR12 04 91	113.1	109.6	-0.0	-0.3
B	01 91	118.3	116.6	1.7	0.3
DK	04 91	115.2	114.7	-1.8	-0.9
D	04 91	117.2	115.6	2.4	0.1
GR	02 91	104.2	99.6	-5.6	-2.1
E	03 91	108.6	103.4	-2.6	-0.1
F	04 91	114.8	109.9	1.7	-0.5
IRL	03 91	148.6	140.3	7.0	7.4
I	04 91	119.7	112.4	-3.0	0.1
L	01 91	112.3	111.9	-2.2	-2.1
NL	03 91	109.0	98.3	10.1	2.4
P	12 90	126.1	124.7	4.9	2.7
UK	04 91	98.9	97.3	-3.0	-0.2
USA	04 91	112.3	114.0	-6.4	-3.4
J	04 91	129.8	129.1	6.1	0.6
<b>INV</b>					
<b>INVESTITIONSGUETER</b>		<b>CAPITAL GOODS INDUSTRIES</b>		<b>BIENS D'INVESTISSEMENT</b>	
	EUR12 04 91	119.4	117.3	-3.1	-1.6
B	01 91	117.1	113.5	-1.3	-3.8
DK	04 91	108.0	108.9	-3.9	-1.9
D	04 91	125.8	126.2	4.5	0.4
GR	02 91	114.0	114.3	-0.4	3.8
E	03 91	118.5	116.0	-12.7	-7.1
F	04 91	108.8	105.9	-6.1	-1.7
IRL	03 91	215.6	192.8	-0.4	-2.9
I	04 91	127.1	117.3	-7.6	-2.8
L	01 91	92.4	108.3	-3.1	-7.9
NL	03 91	116.7	116.5	2.1	1.4
P	12 90	122.3	116.7	2.3	0.5
UK	04 91	112.2	116.1	-5.8	-1.8
USA	04 91	116.9	118.5	-1.8	-2.1
J	04 91	135.7	138.0	4.9	-0.4
<b>CON</b>					
<b>VERBRAUCHSGUETER</b>		<b>CONSUMER GOODS</b>		<b>BIENS DE CONSOMMATION</b>	
	EUR12 04 91	119.6	117.8	1.3	-1.1
B	01 91	116.8	116.2	2.0	0.9
DK	04 91	107.9	112.0	2.9	1.5
D	04 91	127.9	128.3	10.4	0.8
GR	02 91	90.8	100.7	2.0	7.9
E	03 91	117.1	109.0	-3.2	-0.9
F	04 91	125.1	119.4	0.3	-0.4
IRL	03 91	130.0	131.7	7.4	1.4
I	04 91	116.6	110.4	-1.1	-2.7
L	01 91	127.6	127.6	3.0	-0.5
NL	03 91	119.0	121.7	4.5	-0.7
P	12 90	126.5	133.0	3.5	-2.0
UK	04 91	109.2	110.1	-4.8	-2.2
USA	04 91	109.5	112.5	-2.1	-1.2
J	04 91	120.9	118.8	0.6	-3.6
<b>UMSATZ</b>					
<b>TURNOVER</b>					
<b>CHIFFRE D'AFFAIRES</b>					
<b>NACE 1-4</b>					
<b>GESAMTE INDUSTRIE OHNE BAUINDUSTRIE</b>		<b>TOTAL INDUSTRY EXCLUDING CONSTRUCTION</b>		<b>ENSEMBLE DE L'INDUSTRIE SANS BATIMENT</b>	
	EUR12 01 91	127.3	132.3	5.4	1.4
<b>ABHAENIGKE BESHCAEFTIGTE</b>					
<b>NUMBER OF EMPLOYEES</b>					
<b>NOMBRE DE SALARIÉS</b>					
<b>NACE 1-4</b>					
<b>GESAMTE INDUSTRIE OHNE BAUINDUSTRIE</b>		<b>TOTAL INDUSTRY EXCLUDING CONSTRUCTION</b>		<b>ENSEMBLE DE L'INDUSTRIE SANS BATIMENT</b>	
	EUR12 III 90	97.9	97.5	0.5	0.0

% B(1) - Letzte 3 Monate gegenüber dem entsprechenden Vorjahreszeitraum  
 - Last 3 months compared with corresponding months of previous year  
 - Les 3 derniers mois par rapport aux mois correspondants de l'année précédente

% A(2) - Letzte 3 Monate gegenüber den vorhergehenden 3 Monaten  
 - Last 3 months compared with previous 3 months  
 - Les 3 derniers mois par rapport aux 3 mois précédents

**PRODUKTIONSINDIZES - SAISONBEREINIGT**  
**INDICES OF PRODUCTION - SEASONALLY ADJUSTED**  
**INDICES DE PRODUCTION - DÉSAISONNALISÉS**

1985 = 100

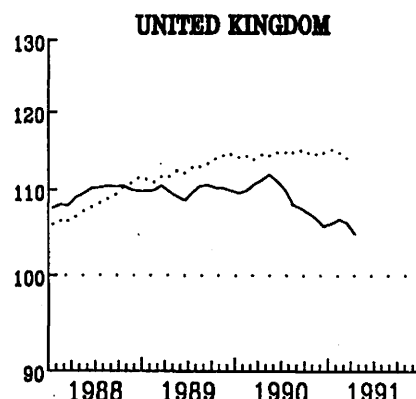
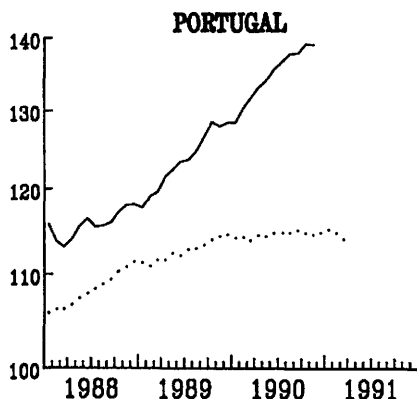
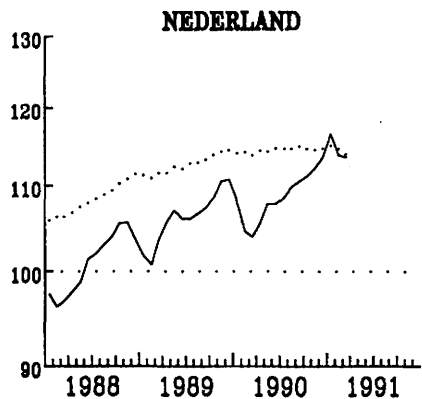
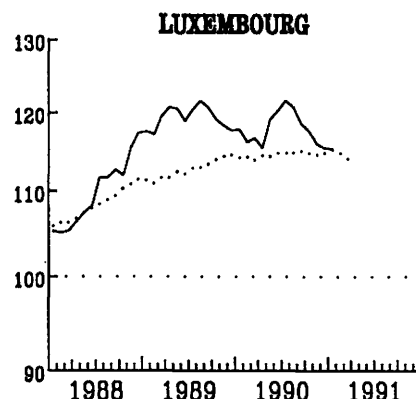
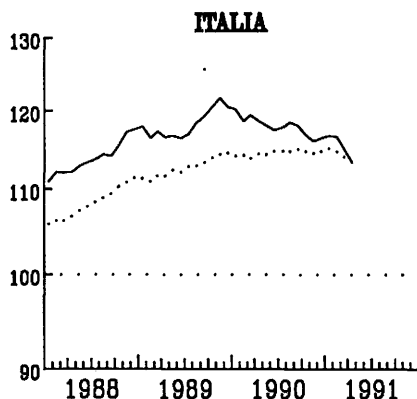
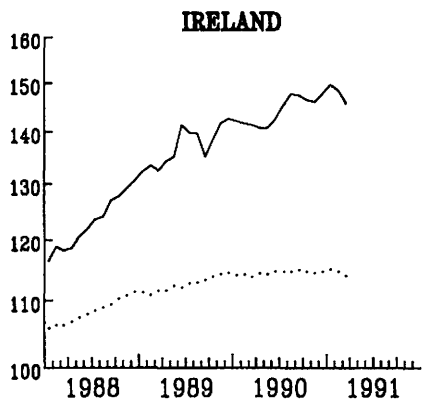
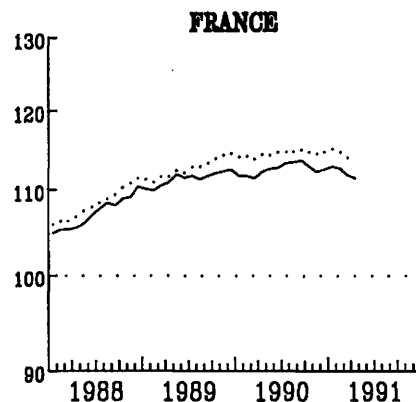
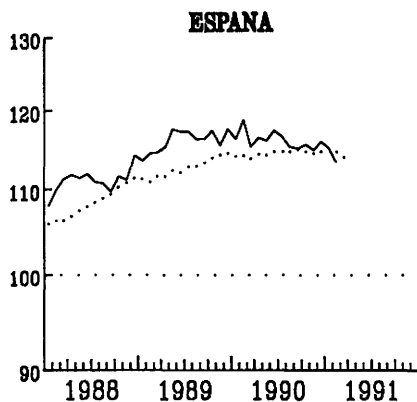
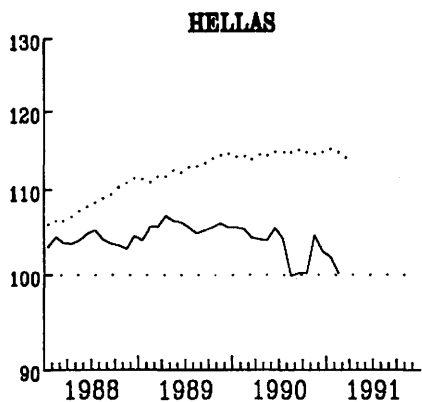
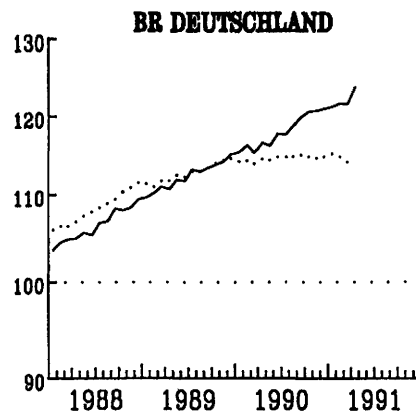
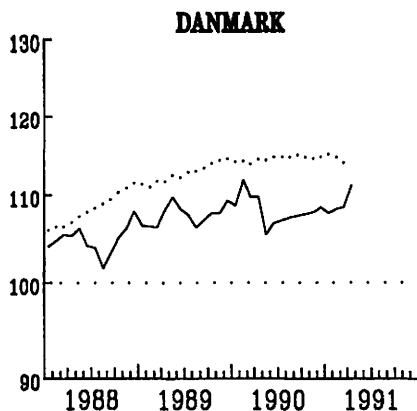
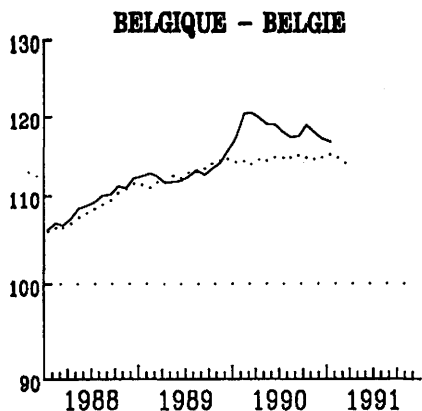
	1988	1989	1990	1990			1991				
				10	11	12	01	02	03	04	
NACE 1-4											
GESAMTE INDUSTRIE OHNE BAUINDUSTRIE				TOTAL INDUSTRY EXCLUDING CONSTRUCTION				ENSEMBLE DE L'INDUSTRIE SANS BATIMENT			
EUR12	108.9	113.0	114.9	115.0	114.3	114.1	115.8	115.3	112.9	113.7	EUR12
B	108.9	112.7	118.4	117.5	119.2	116.9	115.3	:	:	:	B
DK	104.8	107.2	107.8	109.5	110.9	103.3	111.5	108.6	104.9	112.0	DK
D	106.5	112.1	117.9	121.8	120.6	119.8	122.7	121.1	121.1	122.4	D
GR	103.7	105.3	103.3	107.3	102.7	103.5	101.5	101.1	:	:	GR
E	111.1	116.1	116.1	114.7	117.6	112.3	118.2	114.7	106.5	:	E
F	107.5	111.9	113.4	113.6	112.1	111.0	114.3	113.5	110.0	111.9	F
IRL	123.1	137.4	143.8	143.6	145.4	149.2	149.0	151.0	145.3	:	IRL
I	114.2	118.6	117.7	115.9	114.9	117.0	117.2	115.9	116.5	112.6	I
L	110.0	118.6	118.0	114.8	115.8	116.8	113.3	:	:	:	L
NL	101.3	106.4	109.2	109.4	110.7	116.4	113.7	119.9	107.8	:	NL
P	116.2	124.1	135.2	138.9	140.1	138.4	:	:	:	:	P
UK	109.6	110.0	109.2	107.8	106.0	105.7	105.2	106.9	107.0	104.1	UK
USA	111.7	114.5	115.7	116.4	114.7	113.6	112.9	112.0	111.2	111.3	USA
J	112.8	119.7	125.3	129.7	128.4	127.9	129.9	129.8	127.1	127.2	J
INT											
GRUNDSTOFFE U. PROD. GÜTER				INTERMEDIATE GOODS				BIENS INTERMÉDIAIRES			
EUR12	108.1	111.0	111.6	111.1	110.6	109.8	111.6	112.3	109.3	109.6	EUR12
INV											
INVESTITIONSGÜTER				CAPITAL GOODS INDUSTRIES				BIENS D'INVESTISSEMENT			
EUR12	111.6	118.9	121.8	119.2	117.8	119.3	120.1	117.8	116.4	117.3	EUR12
CON											
VERBRAUCHSGÜTER				CONSUMER GOODS				BIENS DE CONSOMMATION			
EUR12	109.1	113.0	116.1	118.9	118.2	117.4	119.8	117.3	116.2	117.8	EUR12

**INDUSTRIELLE PRODUKTION**  
GLEITENDE 3-MONATSDURCHSCHNITTE

**INDUSTRIAL PRODUCTION**  
3 MONTH MOVING AVERAGE

**PRODUCTION INDUSTRIELLE**  
MOYENNE MOBILE SUR 3 MOIS

NACE 1-4 1985=100



..... EUR 12

EINFACH-LOGARITHMISCHE SKALA

SEMI-LOGARITHMIC SCALE

ECHELLE SEMI-LOGARITHMIQUE

**PRODUKTIONSINDIZES - PRO ARBEITSTAG**  
**INDICES OF PRODUCTION - PER WORKING DAY**  
**INDICES DE PRODUCTION - PAR JOUR OUVRABLE**

1985 = 100

	1988	1989	1990	1989			1990			
				12	01	02	12	01	02	

NACE 1-4

GESAMTE INDUSTRIE OHNE BAUINDUSTRIE

TOTAL INDUSTRY EXCLUDING CONSTRUCTION

ENSEMBLE DE L'INDUSTRIE SANS BATIMENT

EUR12	108.9	113.0	114.7	113.5	114.0	117.2	112.7	115.2	118.7	EUR12
B	108.9	112.7	117.3	107.6	119.4	122.7	:	:	:	B
DK	104.8	107.2	107.8	104.9	103.9	103.9	101.9	106.9	102.9	DK
D	106.5	112.1	117.9	113.9	111.1	111.9	118.9	118.0	117.9	D
GR	103.7	105.3	102.9	103.4	98.2	105.4	:	:	:	GR
E	111.1	116.1	116.0	108.0	122.4	115.2	107.1	121.8	:	E
F	107.5	111.9	113.4	112.0	118.3	116.6	111.2	119.7	119.4	F
IRL	123.1	137.4	143.8	144.5	133.2	139.8	148.4	142.5	:	IRL
I	114.2	118.6	117.7	119.9	115.3	128.0	113.8	116.5	124.5	I
L	110.0	118.6	118.0	114.4	115.2	120.5	114.5	:	:	L
NL	101.3	106.4	109.2	125.0	121.0	114.0	130.0	125.0	133.0	NL
P	114.9	120.9	126.3	124.4	126.5	128.9	:	:	:	P
UK	109.6	110.0	109.2	108.7	107.0	116.6	104.0	102.7	113.4	UK
USA	111.7	114.5	115.7	113.1	112.3	115.5	111.5	111.1	112.4	USA
J	112.8	119.7	125.4	125.0	111.0	117.4	132.3	119.0	126.0	J

INT  
GRUNDSTOFFE U. PROD. GUETER

INTERMEDIATE GOODS

BIENS INTERMEDIAIRES

EUR12	108.1	111.0	111.5	109.0	115.8	115.9	107.2	115.8	118.1	EUR12
-------	-------	-------	-------	-------	-------	-------	-------	-------	-------	-------

INV  
INVESTITIONSGUETER

CAPITAL GOODS INDUSTRIES

BIENS D'INVESTISSEMENT

EUR12	111.6	118.9	121.7	128.8	111.3	121.5	126.3	110.4	117.5	EUR12
-------	-------	-------	-------	-------	-------	-------	-------	-------	-------	-------

CON  
VERBRAUCHSGUETER

CONSUMER GOODS

BIENS DE CONSOMMATION

EUR12	109.1	113.0	116.0	109.4	112.2	116.4	110.5	116.3	118.0	EUR12
-------	-------	-------	-------	-------	-------	-------	-------	-------	-------	-------

# INDUSTRIELLE PRODUKTION

Veränderung gegenüber dem  
Vorjahresquartal

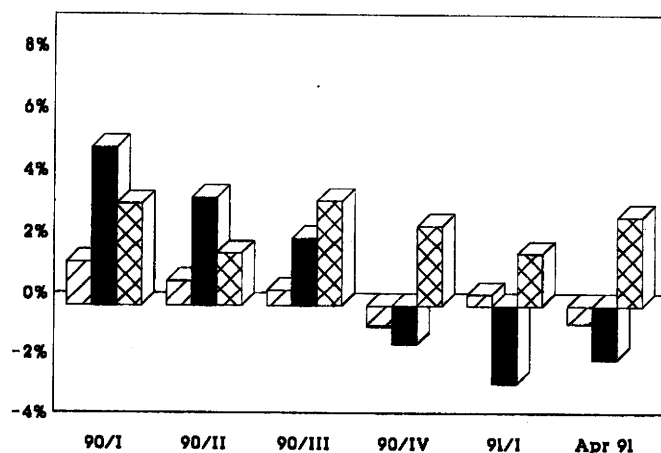
# INDUSTRIAL PRODUCTION

Change from the corresponding quarter  
of the previous year

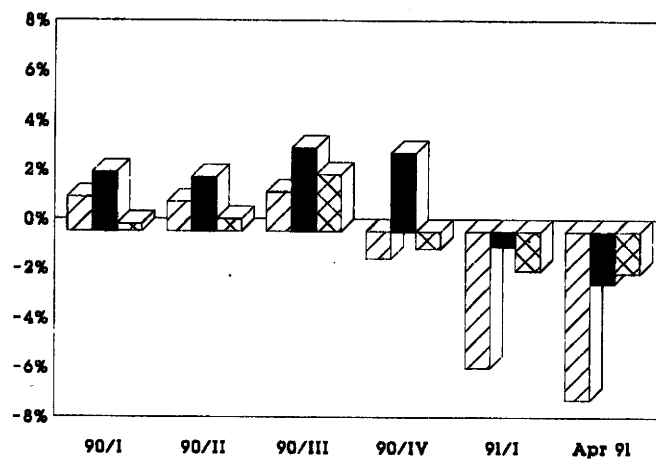
# PRODUCTION INDUSTRIELLE

Variation par rapport au trimestre  
de l'année précédente

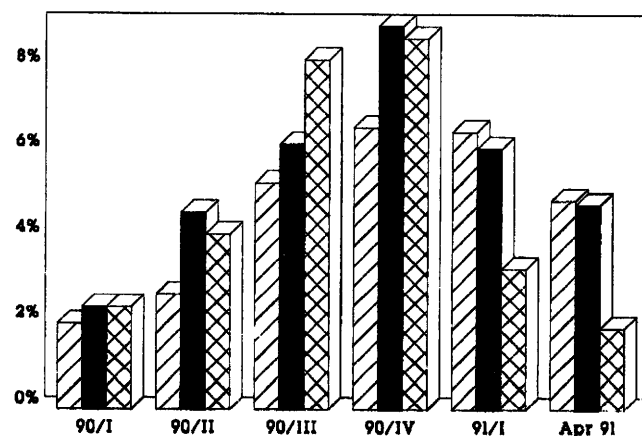
## EUR 12



## USA



## JAPAN



Grundstoffe und Produktionsgüter

Investitionsgüter

Verbrauchsgüter

Intermediate goods

Capital goods

Consumption goods

Biens intermédiaires

Biens d'investissement

Biens de consommation

# ERZEUGERPREISINDEX

# PRODUCER PRICE INDEX

# INDICE DES PRIX A LA PRODUCTION

EUR 12 - 1985 = 100

IN LANDESWAEHRUNG

- Industrie NACE 1-4
- Rohstoffe und Halbwaren
- - - Investitionsgueter
- ..... Verbrauchsgueter

IN ECU

- - - Industrie NACE 1-4

IN NATIONAL CURRENCY

- Industry NACE 1-4
- Intermediate Goods
- Capital Goods
- Consumer Goods

IN ECU

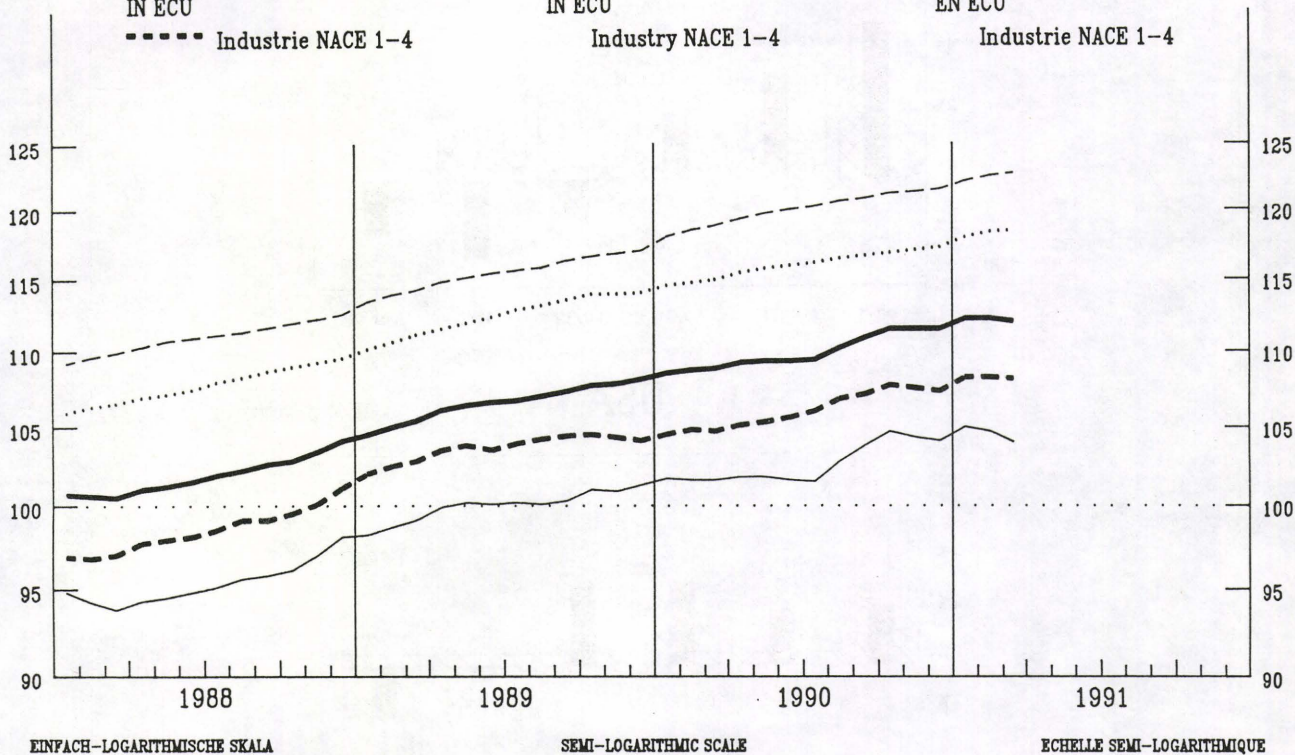
- - - Industry NACE 1-4

EN MONNAIE NATIONALE

- Industrie NACE 1-4
- Biens Intermediaires
- Biens d'Investissement
- Biens de Consommation

EN ECU

- - - Industrie NACE 1-4



## VERAENDERUNG % T/T-12

## VARIATION % T/T-12

## VARIATION % T/T-12

— IN LANDESWAEHRUNG

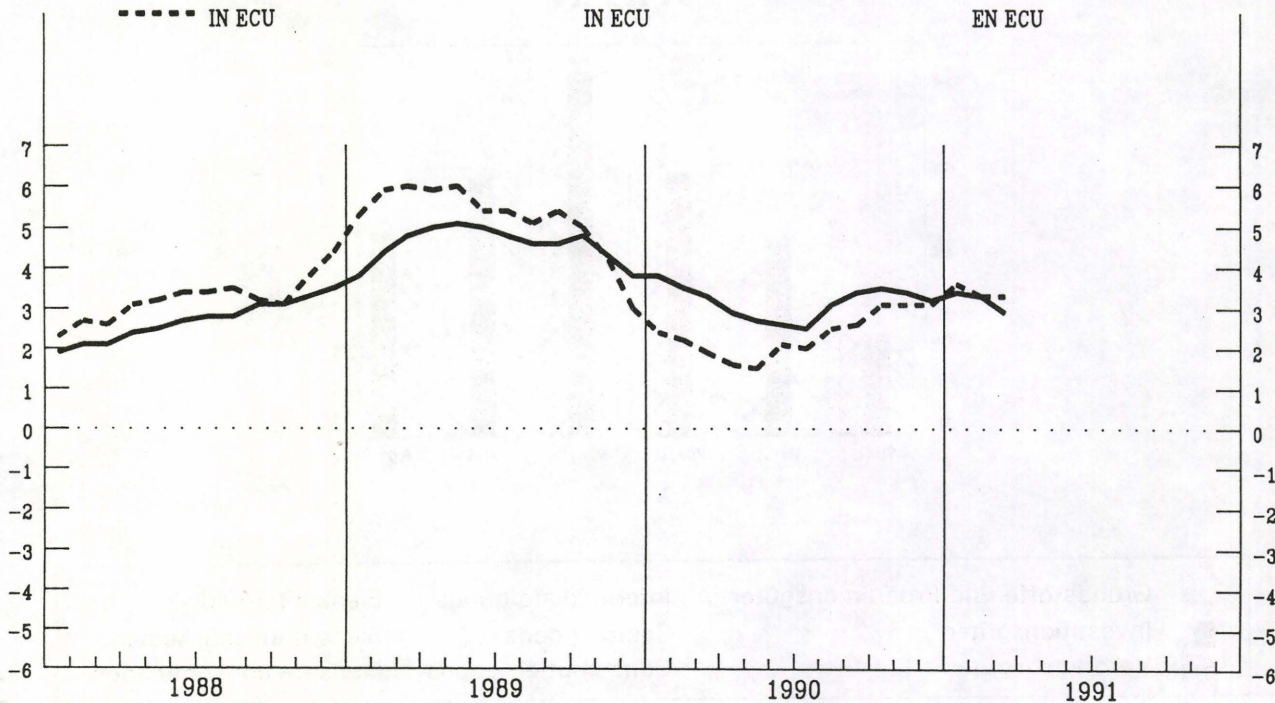
IN NATIONAL CURRENCY

EN MONNAIE NATIONALE

- - - IN ECU

IN ECU

EN ECU





**GESAMTE INDUSTRIE OHNE BAUINDUSTRIE**  
**TOTAL INDUSTRY EXCLUDING CONSTRUCTION**  
**ENSEMBLE DE L'INDUSTRIE SANS BATIMENT**  
**NACE 1-4**  
**PREISINDIZES - PRICE INDICES - INDICES DE PRIX**

1985 = 100

	1989	1990	1990							1991		Letzte Zahl Latest figure Dernier chiffre	
			10	11	12	01	02	03	04	%	%		
												T/T-12	T/T-1

IN LANDESWAHRUNG

IN NATIONAL CURRENCY

EXPRIMES EN MONNAIE NATIONALE

EUR12	106.5	109.9	111.5	111.5	111.5	112.2	112.2	112.0	:	2.9	-0.2	EUR12
B	93.0	93.6	95.3	94.2	93.4	92.9	91.9	91.4	92.2	-1.1	0.8	B
DK	107.0	108.8	109.0	109.0	109.0	109.0	109.0	109.0	109.0	0.9	:	DK
D	99.3	101.0	102.1	101.8	101.5	102.4	102.3	102.0	102.9	2.2	0.9	D
GR	163.3	189.0	201.0	203.8	204.6	208.5	208.7	210.5	215.9	20.2	2.6	GR
E	109.2	111.5	112.9	112.7	112.8	113.5	113.2	112.7	:	1.6	-0.5	E
F (1)	105.8	108.0	108.9	109.2	109.4	109.1	108.8	108.5	:	1.2	-0.3	F (1)
IRL	112.7	113.0	113.1	113.2	113.2	113.1	113.5	113.9	:	0.9	0.4	IRL
I	113.1	117.8	119.6	119.7	119.9	121.3	121.5	121.6	121.5	4.0	-0.1	I
L	100.8	98.8	97.4	96.6	96.4	96.6	96.2	96.2	:	-4.1	-0.0	L
NL	86.0	87.4	88.2	87.8	87.2	89.3	89.2	89.2	89.2	2.3	:	NL
P	:	:	:	:	:	:	:	:	:	:	:	P
UK	111.6	117.6	120.3	120.6	120.6	121.4	122.0	121.6	122.9	5.4	1.1	UK

IN ECU

IN ECU

EXPRIMES EN ECU

EUR12	103.6	106.0	107.7	107.5	107.3	108.2	108.2	108.1	:	3.3	-0.1	EUR12
B	96.3	99.1	100.8	99.9	99.2	98.9	97.9	97.1	97.6	-1.4	0.5	B
DK	106.6	111.1	111.1	111.1	111.0	110.8	110.9	110.9	110.7	-0.3	-0.2	DK
D	106.8	109.6	110.3	110.4	110.6	111.3	111.2	110.7	111.1	1.3	0.4	D
GR	95.6	98.2	101.8	101.5	100.8	100.7	99.6	99.6	101.2	6.8	1.6	GR
E	108.0	111.2	112.6	111.9	111.5	113.3	114.0	113.9	:	4.3	-0.1	E
F (1)	102.4	106.1	107.2	107.3	107.2	106.5	106.1	105.6	:	-0.2	-0.5	F (1)
IRL	103.8	105.3	105.2	105.6	105.6	105.3	105.4	105.8	:	0.4	0.4	IRL
I	108.3	112.0	112.0	112.2	112.6	113.9	114.2	114.9	114.9	2.2	0.1	I
L	104.4	104.6	103.1	102.5	102.5	102.8	102.5	102.2	:	-3.9	-0.3	L
NL	92.5	94.9	95.3	95.2	95.0	97.1	97.0	96.8	96.4	1.3	-0.5	NL
P	:	:	:	:	:	:	:	:	:	:	:	P
UK	97.7	97.1	101.9	101.0	100.2	101.8	102.0	102.3	104.6	12.7	2.2	UK

(1) Schaetzung - Estimation Eurostat



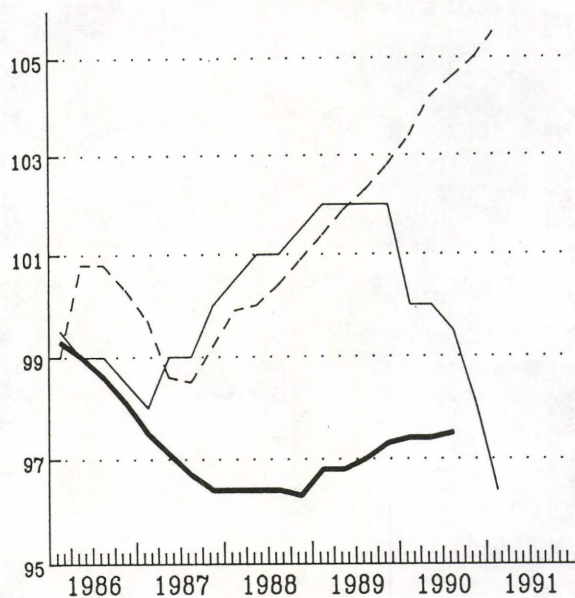


INDEX DER BESCHAEFTIGUNG  
NACE 1-4

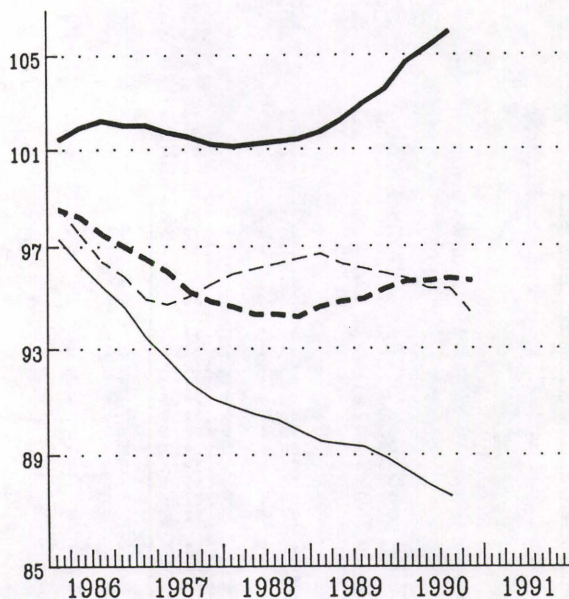
INDEX OF EMPLOYMENT  
NACE 1-4

INDICE DE L'EMPLOI  
NACE 1-4

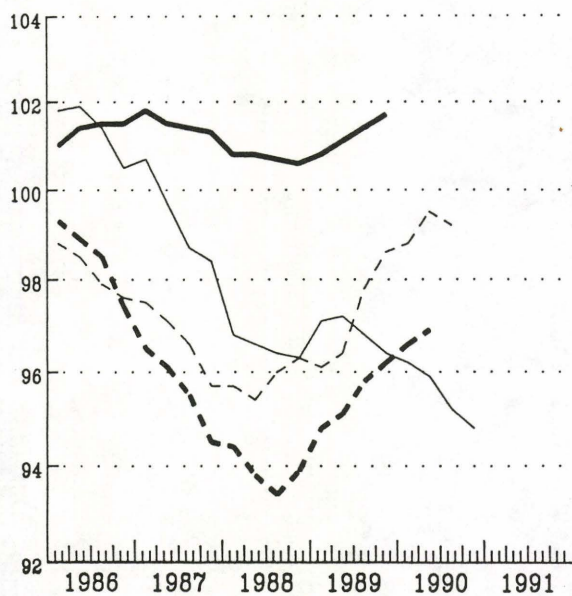
1985=100



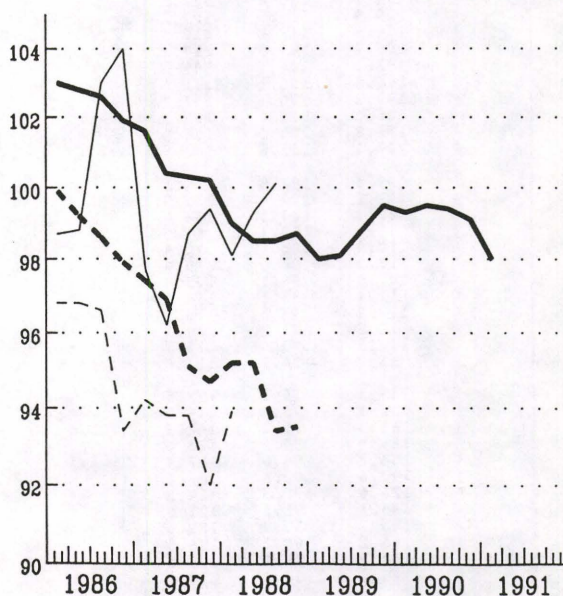
— EUR 12    — USA    - - - Japan



— Deutschland    - - - France  
— Italia    - - - United Kingdom



— Nederland    - - - Belgique  
— Luxembourg    - - - Ireland



— Danmark    - - - Espana  
— Greece    - - - Portugal