

# Harmonized Indices of Consumer Prices

## November 2007

# Statistics in focus

## ECONOMY AND FINANCE

133/2007

### Prices

Author

Christine WIRTZ

## Contents

Price Indices.....	2
Rates of Change.....	4
EEA Index Numbers and Rates of Change.....	6
COICOP/HICP Main categories.....	7

**Euro area** annual inflation, as measured by the Monetary Union Index of Consumer Prices (MUICP)<sup>1</sup>, was 3.1% in November 2007, up from 2.6% in October. A year earlier the rate was 1.9%.

**EU** annual inflation, as measured by the European Index of Consumer Prices (EICP)<sup>2</sup>, was 3.1% in November 2007<sup>3</sup>, up from 2.7% in October. A year earlier the rate was 2.1%.

**EEA** annual inflation, as measured by the European Economic Area Index of Consumer Prices (EEAICP), was 3.1% in November 2007<sup>3</sup>.

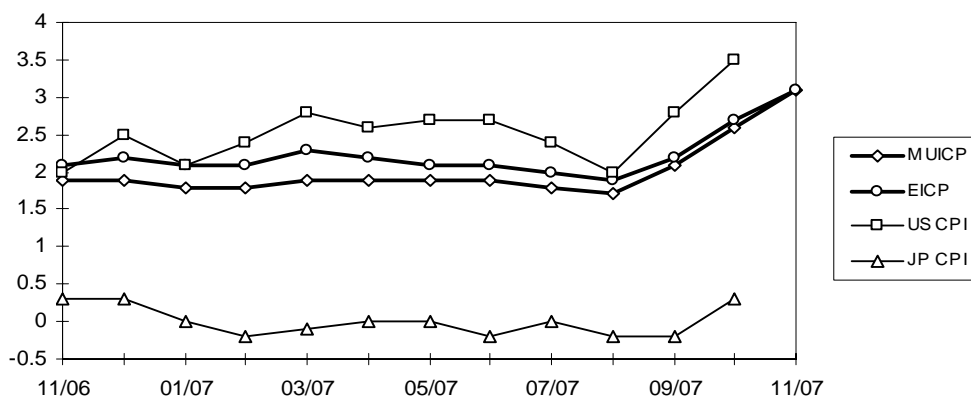
In November 2007, the highest annual inflation rates in the EU Member States were recorded in **Latvia** (13.7%), **Bulgaria** (11.4%) and **Estonia** (9.3%), and the lowest rates were observed in the **Netherlands** (1.8%), **Finland** (2.1%) and **Slovakia** (2.3%).

For the **USA**<sup>4</sup> and **Japan**<sup>4</sup> no November data was available in time for publication.

The annual inflation rates for the **euro area**, the **EU** and the latest available rates for the **USA** and **Japan** are shown in the graph below.

Methodological notes can be accessed via the Eurostat internet site under Special topics/HICP/Methodology – [Short guide for users](#) (issue date: 17/05/2004).

Annual Rate of Change (%)



1 The MUICP is the official euro area aggregate. Its country coverage changes in line with the addition of new Member States and integrates them using a chain index formula. Since January 2007 the euro area includes: Belgium, Germany, Ireland, Greece, Spain, France, Italy, Luxembourg, the Netherlands, Austria, Portugal, Slovenia and Finland.

2 The EICP is the official EU aggregate. Its country coverage changes in line with the addition of new EU Member States and integrates them using a chain index formula.

3 Data for the United Kingdom for November 2007 were not available in time for publication. Due to this fact, EU and EEA totals were calculated using Eurostat estimates.

4 For the USA and Japan the national CPIs are given, which are not strictly comparable with the HICPs.



TABLE I  
HARMONIZED INDICES OF CONSUMER PRICES  
INDEX NUMBERS 2005 = 100

	Euro area	EICP	BE	BG	CZ	DK	DE	EE	IE	EL	ES	FR	IT	CY
<b>Annual Average Index</b>														
2004	97.86	97.88	97.53	94.30	98.4	98.3	98.1	96.05	97.9	96.63	96.73	98.14	97.8	98.00
2005	100.00	100.00	100.00	100.00	100.0	100.0	100.0	100.00	100.0	100.00	100.00	100.00	100.0	100.00
2006	102.18	102.20	102.33	107.42	102.1	101.8	101.8	104.45	102.7	103.31	103.56	101.91	102.2	102.25
<b>Monthly Index - 2005</b>														
Jan	98.31	98.42	96.92	96.93	99.2	98.2	98.6	97.54	97.9	98.70	97.40	98.35	98.1	98.23
Feb	98.65	98.73	99.06	97.77	99.2	98.8	99.0	98.14	98.8	97.03	97.64	99.04	98.0	97.84
Mar	99.32	99.32	99.65	98.25	99.1	99.6	99.3	98.73	99.0	99.50	98.49	99.73	99.2	98.70
Apr	99.75	99.73	99.82	99.40	99.4	100.1	99.3	99.19	99.6	100.30	99.90	99.91	100.0	99.80
May	100.00	100.00	99.99	99.24	99.5	100.0	99.7	99.39	99.8	100.67	100.05	99.91	100.3	100.04
Jun	100.08	100.08	100.33	98.81	100.1	100.2	99.9	100.05	100.1	100.45	100.36	100.08	100.3	100.12
Jul	100.00	100.02	99.31	99.58	100.4	100.0	100.3	100.45	100.0	99.14	99.74	99.91	100.1	98.62
Aug	100.25	100.26	101.10	100.24	100.4	100.1	100.5	100.71	100.5	98.56	100.21	100.34	99.9	99.33
Sep	100.76	100.71	101.10	101.43	100.3	100.9	100.8	101.57	101.2	100.88	100.83	100.77	100.5	100.98
Oct	101.02	100.95	100.93	102.23	101.2	100.9	100.8	101.50	101.2	101.54	101.61	100.77	101.2	102.09
Nov	100.76	100.75	100.85	102.69	100.8	100.5	100.3	101.43	101.0	101.32	101.77	100.51	101.2	102.32
Dec	101.10	101.03	100.93	103.43	100.5	100.6	101.3	101.30	100.8	101.90	102.00	100.69	101.2	101.93
<b>Monthly Index - 2006</b>														
Jan	100.66	100.64	99.60	104.29	101.6	100.2	100.7	102.08	100.3	101.67	101.53	100.60	100.3	100.22
Feb	100.95	100.93	101.88	106.96	101.6	100.9	101.1	102.60	101.5	100.07	101.60	100.99	100.2	100.13
Mar	101.53	101.41	101.81	107.20	101.5	101.4	101.2	102.71	101.8	102.82	102.32	101.44	101.4	101.31
Apr	102.20	102.07	102.38	107.87	101.7	101.9	101.6	103.44	102.3	103.84	103.80	101.89	102.3	102.34
May	102.48	102.42	102.74	108.13	102.3	102.1	101.8	104.00	102.8	103.96	104.17	102.32	102.6	102.54
Jun	102.56	102.53	102.82	107.07	102.4	102.3	101.9	104.48	103.0	103.90	104.33	102.32	102.7	102.75
Jul	102.43	102.43	101.72	107.32	102.8	102.0	102.4	104.94	102.9	103.02	103.76	102.13	102.4	101.42
Aug	102.52	102.60	103.47	107.28	103.0	102.0	102.3	105.70	103.7	101.96	103.99	102.46	102.2	102.04
Sep	102.52	102.65	102.98	106.86	102.5	102.4	101.8	105.45	103.4	104.05	103.79	102.26	102.9	103.25
Oct	102.60	102.74	102.68	107.58	102.0	102.3	101.9	105.34	103.4	104.73	104.22	102.02	103.1	103.81
Nov	102.64	102.82	102.90	108.73	101.8	102.3	101.8	106.15	103.4	104.57	104.47	102.14	103.2	103.70
Dec	103.04	103.21	103.03	109.72	102.0	102.3	102.7	106.45	103.8	105.16	104.77	102.39	103.3	103.43
<b>Monthly Index - 2007</b>														
Jan	102.51	102.75	101.29	111.33	103.0	102.0	102.5	107.18	103.2	104.76	104.01	102.00	102.2	101.66
Feb	102.81	103.09	103.69	111.91	103.3	102.8	103.0	107.34	104.1	103.11	104.09	102.21	102.3	101.36
Mar	103.50	103.71	103.68	111.94	103.6	103.3	103.2	108.49	104.8	105.66	104.89	102.69	103.5	102.72
Apr	104.15	104.30	104.20	112.61	104.4	103.6	103.6	109.26	105.3	106.50	106.38	103.24	104.1	104.01
May	104.40	104.58	104.08	112.98	104.8	103.8	103.8	110.14	105.6	106.69	106.68	103.51	104.5	104.53
Jun	104.50	104.71	104.16	112.74	105.1	103.6	103.9	110.75	105.9	106.64	106.89	103.66	104.7	104.50
Jul	104.25	104.44	103.05	114.66	105.4	103.1	104.4	111.81	105.7	105.83	106.14	103.33	104.1	103.79
Aug	104.31	104.57	104.66	117.22	105.7	102.9	104.3	112.19	106.1	104.75	106.31	103.77	103.9	104.33
Sep	104.71	104.95	104.46	118.63	105.4	103.6	104.5	113.37	106.4	107.11	106.63	103.91	104.7	105.67
Oct	105.22	105.49	104.95	119.02	106.1	104.1	104.7	114.54	106.5	107.86	108.02	104.20	105.5	106.61
Nov	105.78p	106.04p	105.85	121.14	107.0	104.9	105.2	115.98	107.0	108.67	108.79	104.83	105.9	107.02
Dec														

p provisional

TABLE I  
**HARMONIZED INDICES OF CONSUMER PRICES**  
**2005 = 100** INDEX NUMBERS

LV	LT	LU	HU	MT	NL	AT	PL	PT	RO	SI	SK	FI	SE	UK	
<b>Annual Average Index</b>															
93.55	97.41	96.37	96.63	97.53	98.52	97.94	97.9	97.92	91.68	97.60	97.28	99.24	99.18	98.0	<b>2004</b>
100.00	100.00	100.00	100.00	100.00	100.00	100.00	100.0	100.00	100.00	100.00	100.00	100.00	100.00	100.0	<b>2005</b>
106.57	103.79	102.96	104.03	102.58	101.65	101.69	101.3	103.04	106.60	102.54	104.26	101.28	101.50	102.3	<b>2006</b>
<b>Monthly Index - 2005</b>															
96.39	98.49	96.70	98.14	96.05	98.53	99.15	99.4	98.35	96.33	97.79	99.20	98.84	98.88	98.6	<b>Jan</b>
97.29	98.65	98.32	98.69	96.67	99.34	99.50	99.4	98.27	96.92	98.47	99.31	99.45	99.32	98.8	<b>Feb</b>
97.85	99.21	98.65	99.15	97.14	100.14	99.93	99.5	98.67	97.21	99.48	99.31	99.88	99.58	99.3	<b>Mar</b>
98.89	99.53	99.38	99.88	100.65	100.30	99.76	99.9	99.37	98.97	99.54	99.53	100.15	99.76	99.7	<b>Apr</b>
99.65	99.77	99.86	100.48	101.27	100.22	99.76	100.1	99.92	99.26	99.88	99.63	99.80	99.85	100.0	<b>May</b>
100.27	99.93	99.78	100.76	101.27	99.90	100.02	100.0	99.99	99.56	99.93	100.01	100.06	99.93	100.0	<b>Jun</b>
100.27	99.77	99.70	100.67	101.35	99.58	99.76	100.0	100.38	100.53	100.72	99.69	99.71	99.67	100.1	<b>Jul</b>
100.13	99.85	101.08	100.21	101.66	99.90	99.93	100.0	100.54	100.64	100.22	99.63	100.06	99.93	100.4	<b>Aug</b>
101.66	100.65	101.65	100.39	101.66	100.78	100.55	100.4	100.70	101.23	101.18	99.90	100.67	100.72	100.6	<b>Sep</b>
102.35	101.30	102.46	100.44	102.60	100.78	100.55	100.7	101.09	102.10	101.35	101.24	100.67	100.98	100.7	<b>Oct</b>
102.70	101.38	101.41	100.62	99.79	100.46	100.37	100.5	101.32	103.33	100.78	101.24	100.32	100.63	100.7	<b>Nov</b>
102.56	101.46	101.00	100.58	99.87	100.06	100.72	100.2	101.40	103.90	100.67	101.30	100.41	100.72	101.0	<b>Dec</b>
<b>Monthly Index - 2006</b>															
103.67	101.98	100.63	100.55	98.33	100.28	100.66	100.3	101.01	104.96	100.32	103.23	100.00	100.01	100.5	<b>Jan</b>
104.09	102.03	102.13	100.92	98.93	100.78	100.99	100.3	101.21	105.21	100.70	103.56	100.77	100.37	100.9	<b>Feb</b>
104.29	102.24	102.31	101.51	100.00	101.58	101.26	100.4	102.42	105.43	101.43	103.57	101.08	101.03	101.1	<b>Mar</b>
104.96	102.94	102.81	102.27	104.16	102.06	101.84	101.1	103.01	105.88	102.34	103.90	101.61	101.58	101.7	<b>Apr</b>
106.69	103.39	103.43	103.37	104.83	102.02	101.86	101.6	103.57	106.52	103.27	104.41	101.52	101.78	102.2	<b>May</b>
106.58	103.66	103.70	103.66	104.57	101.68	101.88	101.5	103.52	106.69	102.96	104.55	101.54	101.78	102.5	<b>Jun</b>
107.22	104.18	103.08	103.85	104.96	101.32	101.72	101.4	103.38	106.81	102.66	104.68	101.07	101.44	102.5	<b>Jul</b>
106.96	104.12	104.23	104.91	104.66	101.81	102.03	101.7	103.29	106.74	103.35	104.57	101.37	101.48	102.9	<b>Aug</b>
107.67	103.98	103.65	106.33	104.86	102.30	101.89	101.8	103.71	106.80	103.68	104.36	101.47	101.97	103.0	<b>Sep</b>
108.09	105.02	103.08	106.81	104.30	102.12	101.82	101.8	103.73	107.02	102.91	104.38	101.62	102.17	103.2	<b>Oct</b>
109.15	105.84	103.19	107.04	100.71	102.10	101.95	101.8	103.74	108.19	103.23	104.94	101.62	102.18	103.4	<b>Nov</b>
109.49	106.07	103.28	107.17	100.62	101.75	102.33	101.6	103.93	108.99	103.67	105.01	101.65	102.16	104.0	<b>Dec</b>
<b>Monthly Index - 2007</b>															
111.02	106.09	102.93	109.03	99.49	101.50	102.41	101.9	103.62	109.23	103.12	105.53	101.31	101.64	103.2	<b>Jan</b>
111.63	106.49	104.01	109.99	99.72	102.16	102.72	102.2	103.58	109.28	103.00	105.63	101.95	102.11	103.7	<b>Feb</b>
113.14	107.10	104.72	110.64	100.49	103.47	103.21	102.8	104.88	109.37	104.10	105.70	102.70	102.69	104.2	<b>Mar</b>
114.21	108.02	105.33	111.15	103.04	104.05	103.65	103.3	105.85	109.94	105.27	105.99	103.17	103.17	104.5	<b>Apr</b>
115.06	108.55	105.79	112.05	103.76	104.09	103.83	103.9	106.04	110.64	106.47	106.01	102.85	103.03	104.8	<b>May</b>
116.04	108.83	106.04	112.47	103.96	103.55	103.82	104.1	106.00	110.82	106.84	106.08	103.00	103.15	105.0	<b>Jun</b>
117.42	109.51	105.19	112.47	104.72	102.77	103.76	103.9	105.74	111.15	106.74	105.96	102.72	102.83	104.4	<b>Jul</b>
117.88	109.90	106.17	112.41	105.28	102.89	103.80	103.8	105.30	112.11	106.90	105.87	102.73	102.71	104.7	<b>Aug</b>
120.05	111.40	106.24	113.18	105.81	103.60	104.05	104.5	105.75	113.33	107.38	106.17	103.19	103.57	104.8	<b>Sep</b>
122.41	113.04	106.81	114.13	105.92	103.76	104.73r	105.0	106.30	114.43	108.17	106.91	103.49	104.09	105.3	<b>Oct</b>
124.10	114.24	107.33	114.73	103.62	103.92p	105.22p	105.6	106.65	115.50	109.16	107.33	103.76	104.66	:	<b>Nov</b>
															<b>Dec</b>

p provisional r revised : not available

TABLE II  
**HARMONIZED INDICES OF CONSUMER PRICES**  
 RATES OF CHANGE (%)

	Euro area	EICP	BE	BG	CZ	DK	DE	EE	IE	EL	ES	FR	IT	CY
<b>Annual Average Rate of Change</b>														
2004/12	2.1	2.0	1.9	6.1	2.6	0.9	1.8	3.0	2.3	3.0	3.1	2.3	2.3	1.9
2005/12	2.2	2.2	2.5	6.0	1.6	1.7	1.9	4.1	2.2	3.5	3.4	1.9	2.2	2.0
2006/12	2.2	2.2	2.3	7.4	2.1	1.9	1.8	4.4	2.7	3.3	3.6	1.9	2.2	2.2
2007/11	2.0p	2.3p	1.7	7.1	2.6	1.6	2.1	6.4	2.9	2.9	2.7	1.5	2.0	2.0
<b>Annual Rate of Change - 2005</b>														
Jan	1.9	2.0	2.0	3.2	1.5	0.8	1.6	4.2	2.1	4.2	3.1	1.6	2.0	2.8
Feb	2.1	2.1	2.3	3.8	1.4	1.0	1.9	4.6	2.1	3.2	3.3	1.9	2.0	2.4
Mar	2.1	2.1	2.8	4.4	1.1	1.3	1.6	4.8	1.9	2.9	3.4	2.1	2.2	2.4
Apr	2.1	2.1	2.4	5.3	1.4	1.7	1.4	4.7	2.2	3.3	3.5	2.0	2.1	2.7
May	2.0	2.0	2.3	5.1	0.9	1.2	1.6	2.9	2.1	3.2	3.0	1.7	2.3	2.1
Jun	2.1	2.0	2.7	6.5	1.3	1.7	1.8	3.2	1.9	3.2	3.2	1.8	2.1	1.5
Jul	2.2	2.1	2.7	6.0	1.4	1.8	1.8	3.9	2.2	3.9	3.3	1.8	2.1	1.3
Aug	2.2	2.2	2.9	7.2	1.4	2.4	1.9	4.2	2.1	3.6	3.3	2.0	2.1	1.5
Sep	2.6	2.5	3.0	7.5	2.0	2.3	2.5	4.9	2.7	3.8	3.8	2.4	2.2	2.1
Oct	2.5	2.4	2.2	8.2	2.4	1.9	2.3	4.5	2.6	3.7	3.5	2.0	2.6	2.2
Nov	2.3	2.3	2.3	8.0	2.2	1.8	2.2	4.0	2.2	3.4	3.4	1.8	2.4	2.0
Dec	2.2	2.1	2.8	7.4	1.9	2.2	2.1	3.6	1.9	3.5	3.7	1.8	2.1	1.4
<b>Annual Rate of Change - 2006</b>														
Jan	2.4	2.3	2.8	7.6	2.4	2.0	2.1	4.7	2.5	3.0	4.2	2.3	2.2	2.0
Feb	2.3	2.2	2.8	9.4	2.4	2.1	2.1	4.5	2.7	3.1	4.1	2.0	2.2	2.3
Mar	2.2	2.1	2.2	9.1	2.4	1.8	1.9	4.0	2.8	3.3	3.9	1.7	2.2	2.6
Apr	2.5	2.3	2.6	8.5	2.3	1.8	2.3	4.3	2.7	3.5	3.9	2.0	2.3	2.5
May	2.5	2.4	2.8	9.0	2.8	2.1	2.1	4.6	3.0	3.3	4.1	2.4	2.3	2.5
Jun	2.5	2.4	2.5	8.4	2.3	2.1	2.0	4.4	2.9	3.4	4.0	2.2	2.4	2.6
Jul	2.4	2.4	2.4	7.8	2.4	2.0	2.1	4.5	2.9	3.9	4.0	2.2	2.3	2.8
Aug	2.3	2.3	2.3	7.0	2.6	1.9	1.8	5.0	3.2	3.4	3.8	2.1	2.3	2.7
Sep	1.7	1.9	1.9	5.4	2.2	1.5	1.0	3.8	2.2	3.1	2.9	1.5	2.4	2.2
Oct	1.6	1.8	1.7	5.2	0.8	1.4	1.1	3.8	2.2	3.1	2.6	1.2	1.9	1.7
Nov	1.9	2.1	2.0	5.9	1.0	1.8	1.5	4.7	2.4	3.2	2.7	1.6	2.0	1.3
Dec	1.9	2.2	2.1	6.1	1.5	1.7	1.4	5.1	3.0	3.2	2.7	1.7	2.1	1.5
<b>Annual Rate of Change - 2007</b>														
Jan	1.8	2.1	1.7	6.8	1.4	1.8	1.8	5.0	2.9	3.0	2.4	1.4	1.9	1.4
Feb	1.8	2.1	1.8	4.6	1.7	1.9	1.9	4.6	2.6	3.0	2.5	1.2	2.1	1.2
Mar	1.9	2.3	1.8	4.4	2.1	1.9	2.0	5.6	2.9	2.8	2.5	1.2	2.1	1.4
Apr	1.9	2.2	1.8	4.4	2.7	1.7	2.0	5.6	2.9	2.6	2.5	1.3	1.8	1.6
May	1.9	2.1	1.3	4.5	2.4	1.7	2.0	5.9	2.7	2.6	2.4	1.2	1.9	1.9
Jun	1.9	2.1	1.3	5.3	2.6	1.3	2.0	6.0	2.8	2.6	2.5	1.3	1.9	1.7
Jul	1.8	2.0	1.3	6.8	2.5	1.1	2.0	6.5	2.7	2.7	2.3	1.2	1.7	2.3
Aug	1.7	1.9	1.2	9.3	2.6	0.9	2.0	6.1	2.3	2.7	2.2	1.3	1.7	2.2
Sep	2.1	2.2	1.4	11.0	2.8	1.2	2.7	7.5	2.9	2.9	2.7	1.6	1.7	2.3
Oct	2.6	2.7	2.2	10.6	4.0	1.8	2.7	8.7	3.0	3.0	3.6	2.1	2.3	2.7
Nov	3.1p	3.1p	2.9	11.4	5.1	2.5	3.3	9.3	3.5	3.9	4.1	2.6	2.6	3.2
Dec														

p provisional

TABLE II  
HARMONIZED INDICES OF CONSUMER PRICES  
RATES OF CHANGE (%)

LV	LT	LU	HU	MT	NL	AT	PL	PT	RO	SI	SK	FI	SE	UK	
<b>Annual Average Rate of Change</b>															
6.2	1.2	3.2	6.8	2.7	1.4	2.0	3.6	2.5	11.9	3.7	7.5	0.1	1.0	1.3	2004/12
6.9	2.7	3.8	3.5	2.5	1.5	2.1	2.2	2.1	9.1	2.5	2.8	0.8	0.8	2.1	2005/12
6.6	3.8	3.0	4.0	2.6	1.7	1.7	1.3	3.0	6.6	2.5	4.3	1.3	1.5	2.3	2006/12
9.5	5.5	2.5	7.9	0.5	1.6p	2.0p	2.4	2.4	4.8	3.5	2.0	1.5	1.6	:	2007/11
<b>Annual Rate of Change - 2005</b>															
6.7	2.8	2.9	4.0	1.9	1.2	2.4	3.8	2.0	8.9	2.3	3.2	-0.2	0.5	1.6	Jan
7.0	3.2	3.2	3.4	2.5	1.5	2.3	3.6	2.1	8.9	2.8	2.7	0.0	1.2	1.7	Feb
6.6	3.2	3.5	3.3	2.6	1.5	2.4	3.4	2.3	8.7	3.3	2.4	0.9	0.5	1.9	Mar
7.1	3.2	3.7	3.8	2.0	1.3	2.3	3.1	2.0	10.0	2.7	2.7	1.2	0.4	1.9	Apr
6.5	1.9	3.7	3.5	2.4	1.0	2.0	2.1	1.8	10.0	2.1	2.4	0.6	0.2	1.9	May
6.6	2.0	3.2	3.7	2.1	1.5	2.0	1.4	0.6	9.7	1.7	2.6	1.0	0.8	2.0	Jun
6.3	1.9	4.0	3.6	1.7	1.5	2.1	1.5	1.9	9.4	2.0	2.1	0.9	0.7	2.3	Jul
6.3	2.3	4.3	3.5	2.5	1.6	1.9	1.8	2.5	8.9	1.8	2.1	1.0	1.1	2.4	Aug
7.4	2.5	4.7	3.6	2.0	1.7	2.6	1.9	2.7	8.5	3.2	2.3	1.1	1.1	2.5	Sep
7.7	3.0	5.0	3.1	3.0	1.5	2.0	1.6	2.6	8.2	3.2	3.5	0.8	0.9	2.3	Oct
7.6	2.9	3.6	3.3	4.3	1.6	1.7	1.1	2.5	8.7	2.1	3.6	1.0	1.2	2.1	Nov
7.1	3.0	3.4	3.3	3.4	2.0	1.6	0.8	2.5	8.7	2.4	3.9	1.1	1.3	1.9	Dec
<b>Annual Rate of Change - 2006</b>															
7.6	3.5	4.1	2.5	2.4	1.8	1.5	0.9	2.7	9.0	2.6	4.1	1.2	1.1	1.9	Jan
7.0	3.4	3.9	2.3	2.3	1.4	1.5	0.9	3.0	8.6	2.3	4.3	1.3	1.1	2.0	Feb
6.6	3.1	3.7	2.4	2.9	1.4	1.3	0.9	3.8	8.5	2.0	4.3	1.2	1.5	1.8	Mar
6.1	3.4	3.5	2.4	3.5	1.8	2.1	1.2	3.7	7.0	2.8	4.4	1.5	1.8	2.0	Apr
7.1	3.6	3.6	2.9	3.5	1.8	2.1	1.5	3.7	7.3	3.4	4.8	1.7	1.9	2.2	May
6.3	3.7	3.9	2.9	3.3	1.8	1.9	1.5	3.5	7.2	3.0	4.5	1.5	1.9	2.5	Jun
6.9	4.4	3.4	3.2	3.6	1.7	2.0	1.4	3.0	6.2	1.9	5.0	1.4	1.8	2.4	Jul
6.8	4.3	3.1	4.7	3.0	1.9	2.1	1.7	2.7	6.1	3.1	5.0	1.3	1.6	2.5	Aug
5.9	3.3	2.0	5.9	3.1	1.5	1.3	1.4	3.0	5.5	2.5	4.5	0.8	1.2	2.4	Sep
5.6	3.7	0.6	6.3	1.7	1.3	1.3	1.1	2.6	4.8	1.5	3.1	0.9	1.2	2.4	Oct
6.3	4.4	1.8	6.4	0.9	1.6	1.6	1.3	2.4	4.7	2.4	3.7	1.3	1.5	2.7	Nov
6.8	4.5	2.3	6.6	0.8	1.7	1.6	1.4	2.5	4.9	3.0	3.7	1.2	1.4	3.0	Dec
<b>Annual Rate of Change - 2007</b>															
7.1	4.0	2.3	8.4	1.2	1.2	1.7	1.6	2.6	4.1	2.8	2.2	1.3	1.6	2.7	Jan
7.2	4.4	1.8	9.0	0.8	1.4	1.7	1.9	2.3	3.9	2.3	2.0	1.2	1.7	2.8	Feb
8.5	4.8	2.4	9.0	0.5	1.9	1.9	2.4	2.4	3.7	2.6	2.1	1.6	1.6	3.1	Mar
8.8	4.9	2.5	8.7	-1.1	1.9	1.8	2.2	2.8	3.8	2.9	2.0	1.5	1.6	2.8	Apr
7.8	5.0	2.3	8.4	-1.0	2.0	1.9	2.3	2.4	3.9	3.1	1.5	1.3	1.2	2.5	May
8.9	5.0	2.3	8.5	-0.6	1.8	1.9	2.6	2.4	3.9	3.8	1.5	1.4	1.3	2.4	Jun
9.5	5.1	2.0	8.3	-0.2	1.4	2.0	2.5	2.3	4.1	4.0	1.2	1.6	1.4	1.9	Jul
10.2	5.6	1.9	7.1	0.6	1.1	1.7	2.1	1.9	5.0	3.4	1.2	1.3	1.2	1.8	Aug
11.5	7.1	2.5	6.4	0.9	1.3	2.1	2.7	2.0	6.1	3.6	1.7	1.7	1.6	1.8	Sep
13.2	7.6	3.6	6.9	1.6	1.6	2.9	3.1	2.5	6.9	5.1	2.4	1.8	1.9	2.1	Oct
13.7	7.9	4.0	7.2	2.9	1.8p	3.2p	3.7	2.8	6.8	5.7	2.3	2.1	2.4	:	Nov
															Dec

p provisional : not available

TABLE III  
HARMONIZED INDICES OF CONSUMER  
PRICES  
INDEX NUMBERS 2005 = 100

	EEA	IS	NO	CH**
<b>Annual Average Index</b>				
2004	97.89	98.64	98.5	98.8
2005	100.00	100.00	100.0	100.0
2006	102.21	104.65	102.5	101.0
<b>Monthly Index - 2005</b>				
Jan	98.42	99.71	98.7	99.1
Feb	98.73	99.56	98.7	99.3
Mar	99.32	99.94	99.2	99.6
Apr	99.73	99.48	99.7	100.4
May	100.00	99.17	100.1	100.3
Jun	100.08	99.56	100.3	100.0
Jul	100.02	99.40	99.9	99.5
Aug	100.26	99.17	100.1	99.6
Sep	100.71	100.79	100.8	100.1
Oct	100.95	101.25	100.8	100.9
Nov	100.75	100.87	100.8	100.7
Dec	101.03	101.10	100.8	100.6
<b>Monthly Index - 2006</b>				
Jan	100.64	101.01	100.5	100.4
Feb	100.93	100.78	101.4	100.7
Mar	101.42	101.93	101.6	100.6
Apr	102.08	102.72	102.5	101.4
May	102.43	103.92	102.6	101.6
Jun	102.53	105.27	102.4	101.6
Jul	102.43	105.71	102.2	100.9
Aug	102.60	106.17	102.2	101.1
Sep	102.66	106.95	103.8	100.9
Oct	102.75	107.14	103.8	101.2
Nov	102.83	107.06	103.6	101.2
Dec	103.21	107.08	103.0	101.2
<b>Monthly Index - 2007</b>				
Jan	102.75	107.38	101.7	100.5
Feb	103.08	107.49	102.2	100.7
Mar	103.71	106.77	102.9	100.7
Apr	104.29	107.06	103.0	101.9
May	104.57	108.09	103.2	102.1
Jun	104.70	108.47	103.1	102.2
Jul	104.42	108.43	102.9	101.6
Aug	104.55	108.07	102.8	101.5
Sep	104.94	109.24	103.5	101.6
Oct	105.47	109.63	103.5	102.5
Nov	106.03p	110.03	104.6	103.0
Dec				

TABLE IV  
HARMONIZED INDICES OF CONSUMER  
PRICES  
RATES OF CHANGE (%)

EEA	IS	NO	CH**	
<b>Annual Average Rate of Change</b>				
2.0	2.3	0.6	0.8	2004/12
2.2	1.4	1.5	1.2	2005/12
2.2	4.6	2.5	1.1	2006/12
2.2p	3.8	0.7	0.6	2007/11
<b>Annual Rate of Change - 2005</b>				
2.0	2.6	1.0	1.2	Jan
2.1	2.9	0.8	1.4	Feb
2.1	2.4	0.8	1.5	Mar
2.1	1.6	1.1	1.4	Apr
2.0	0.5	1.4	1.1	May
2.0	0.4	1.6	0.6	Jun
2.1	0.5	1.3	1.2	Jul
2.2	0.4	1.8	0.9	Aug
2.5	1.6	2.1	1.4	Sep
2.4	1.5	1.8	1.3	Oct
2.2	1.1	1.8	1.0	Nov
2.1	1.0	2.0	1.0	Dec
<b>Annual Rate of Change - 2006</b>				
2.3	1.3	1.8	1.3	Jan
2.2	1.2	2.7	1.4	Feb
2.1	2.0	2.4	1.0	Mar
2.4	3.3	2.8	1.1	Apr
2.4	4.8	2.5	1.4	May
2.4	5.7	2.1	1.6	Jun
2.4	6.3	2.3	1.4	Jul
2.3	7.1	2.1	1.5	Aug
1.9	6.1	3.0	0.8	Sep
1.8	5.8	3.0	0.3	Oct
2.1	6.1	2.8	0.5	Nov
2.2	5.9	2.2	0.6	Dec
<b>Annual Rate of Change - 2007</b>				
2.1	6.3	1.2	0.1	Jan
2.1	6.7	0.8	0.0	Feb
2.3	4.7	1.3	0.2	Mar
2.2	4.2	0.5	0.5	Apr
2.1	4.0	0.6	0.5	May
2.1	3.0	0.7	0.6	Jun
1.9	2.6	0.7	0.7	Jul
1.9	1.8	0.6	0.4	Aug
2.2	2.1	-0.3	0.7	Sep
2.6	2.3	-0.3	1.3	Oct
3.1p	2.8	1.0	1.8	Nov
				Dec

p provisional \*\* national CPI

TABLE V

## MAIN CATEGORIES OF HARMONIZED INDICES OF CONSUMER PRICES

November 2007 / November 2006

ANNUAL RATES OF CHANGE (%)

	00.	01.	02.	03.	04.	05.	06.	07.	08.	09.	10.	11.	12.
<b>Euro area</b>	3.1p	4.3p	2.6p	1.2p	3.6p	2.0p	1.4p	5.8p	-1.8p	0.3p	9.4p	3.2p	2.3p
<b>EICP</b>	3.1p	5.1p	3.6p	0.1p	3.4p	1.8p	2.0p	6.0p	-2.0p	-0.1p	9.9p	3.5p	2.1p
<b>BE</b>	2.9	4.3	5.1	0.6	3.8	2.6	-0.6	5.7	-4.8	1.0	2.0	1.4	3.3
<b>BG</b>	11.4	21.9	-2.3	10.0	7.0	4.2	4.2	12.7	0.0	4.0	10.1	17.6	9.2
<b>CZ</b>	5.1	10.5	15.7	0.3	6.1	0.0	2.4	3.8	-2.9	0.3	2.0	3.2	2.2
<b>DK</b>	2.5	6.8	2.1	-2.2	2.8	1.3	-1.3	4.3	-0.6	1.8	4.7	2.8	-0.1
<b>DE</b>	3.3	5.4	0.8	0.9	3.0	1.4	1.4	7.4	0.8	0.9	29.1	2.7	2.1
<b>EE</b>	9.3	15.2	4.2	5.4	14.0	3.6	9.7	9.1	-0.4	4.7	6.2	11.0	8.1
<b>IE</b>	3.5	5.6	5.4	-3.4	6.4	-1.8	3.0	5.5	1.2	1.2	6.0	3.7	2.2
<b>EL</b>	3.9	4.3	0.7	3.0	10.0	2.4	3.2	5.4	-3.3	1.3	4.6	4.6	2.5
<b>ES</b>	4.1	6.3	6.6	1.2	4.7	2.4	-2.1	6.8	0.7	-0.7	4.1	4.8	3.2
<b>FR</b>	2.6	2.3	4.0	0.6	4.3	1.5	1.4	5.7	-0.5	-1.1	3.0	2.7	1.9
<b>IT</b>	2.6	3.9	2.4	1.6	3.0	3.0	2.4	4.0	-8.0	1.1	2.4	2.6	2.6
<b>CY</b>	3.2	2.4	1.8	-0.9	6.7	0.1	5.1	7.4	1.5	1.3	4.7	3.0	2.0
<b>LV</b>	13.7	18.9	19.8	3.8	20.1	4.0	8.8	15.0	-6.3	4.8	18.8	18.5	13.0
<b>LT</b>	7.9	15.3	6.5	-5.5	11.3	3.0	8.0	10.6	-7.1	0.2	9.4	10.8	5.7
<b>LU</b>	4.0	5.0	4.5	0.8	5.2	2.4	0.4	6.4	-1.7	0.8	1.7	3.7	3.5
<b>HU</b>	7.2	12.5	5.2	0.4	10.6	0.5	21.4	6.9	-1.9	3.1	5.5	6.2	3.8
<b>MT</b>	2.9	7.1	1.2	8.9	0.7	0.9	2.9	1.9	0.0	-0.5	6.0	2.8	1.1
<b>NL</b>	1.8p	3.0p	2.0p	-1.3p	1.8p	1.8p	1.1p	5.5p	-3.5p	-0.9p	0.8p	3.3p	1.8p
<b>AT</b>	3.2p	6.4p	2.4p	4.7p	4.0p	2.0p	2.3p	4.3p	-2.9p	0.8p	2.5p	2.6p	2.5p
<b>PL</b>	3.7	7.3	5.1	-7.0	4.8	1.7	2.3	8.0	-1.6	-2.0	2.4	4.3	1.8
<b>PT</b>	2.8	2.2	6.3	3.0	3.7	1.2	5.5	3.7	-1.9	1.1	4.5	2.5	1.9
<b>RO</b>	6.8	9.6	10.2	3.3	8.4	1.9	-3.6	6.2	-1.7	1.7	3.1	4.4	4.5
<b>SI</b>	5.7	10.9	7.2	3.3	9.0	4.0	1.2	2.5	0.1	3.9	3.3	9.5	4.1
<b>SK</b>	2.3	6.7	1.6	0.9	0.7	-0.4	-0.3	1.2	2.9	0.6	3.5	3.6	3.0
<b>FI</b>	2.1	2.7	1.9	0.0	3.2	1.0	-0.1	2.8	6.6	0.0	4.0	2.6	1.7
<b>SE</b>	2.4	3.7	7.6	2.8	-0.4	0.7	3.3	5.5	-1.6	-0.2	2.8	3.4	3.7
<b>UK</b>	:	:	:	:	:	:	:	:	:	:	:	:	:
<b>EEA</b>	3.1p	5.1p	3.5p	0.0p	3.4p	1.8p	2.0p	6.0p	-2.0p	-0.1p	9.8p	3.5p	2.1p
<b>IS</b>	2.8	-4.3	1.3	0.0	6.9	1.6	3.9	7.6	2.8	0.6	2.9	1.1	7.8
<b>NO</b>	1.0	2.8	1.3	-3.2	-2.8	2.4	2.4	3.4	-2.7	0.7	1.3	4.4	2.5

p provisional : not available

**COICOP/HICP Code**

- |            |   |            |                                  |
|------------|---|------------|----------------------------------|
| <b>00.</b> | HICP (all-items index)  | <b>06.</b> | Health                           |
| <b>01.</b> | Food and non-alcoholic beverages                                      | <b>07.</b> | Transports                       |
| <b>02.</b> | Alcoholic beverages and tobacco                                       | <b>08.</b> | Communications                   |
| <b>03.</b> | Clothing and footwear   | <b>09.</b> | Recreation and culture           |
| <b>04.</b> | Housing, water, electricity, gas and other fuels                      | <b>10.</b> | Education                        |
| <b>05.</b> | Furnishings, household equipment and routine maintenance of the house | <b>11.</b> | Restaurants and hotels           |
|            |   | <b>12.</b> | Miscellaneous goods and services |

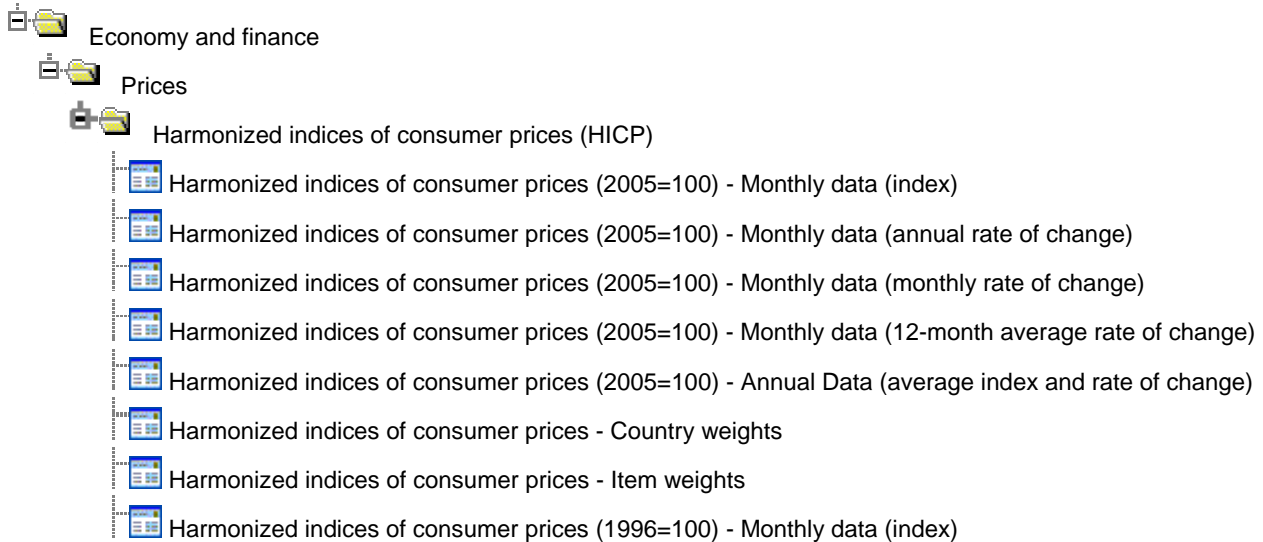
## Further information:

Dedicated HICP section on the Eurostat website:

[http://epp.eurostat.ec.europa.eu/pls/portal/url/page/PGP\\_DS\\_HICP](http://epp.eurostat.ec.europa.eu/pls/portal/url/page/PGP_DS_HICP)

Data:

[Eurostat website / Economy and finance / Data](#)



---

### Journalists can contact the media support service:

Bech Building Office A4/125  
L - 2920 Luxembourg

Tel. (352) 4301 33408  
Fax (352) 4301 35349

E-mail: [eurostat-mediasupport@ec.europa.eu](mailto:eurostat-mediasupport@ec.europa.eu)

### European Statistical Data Support:

Eurostat set up with the members of the 'European statistical system' a network of support centres, which will exist in nearly all Member States as well as in some EFTA countries.

Their mission is to provide help and guidance to Internet users of European statistical data.

Contact details for this support network can be found on our Internet site: <http://ec.europa.eu/eurostat/>

---

A list of worldwide sales outlets is available at the:

### Office for Official Publications of the European Communities.

2, rue Mercier  
L - 2985 Luxembourg

URL: <http://publications.europa.eu>  
E-mail: [info@publications.europa.eu](mailto:info@publications.europa.eu)

---