

Harmonized Indices of Consumer Prices February 2000

The rate of inflation for the euro-zone*, as measured by the Monetary Union Index of Consumer Prices (MUICP=EUR-11), was 2.0% comparing February 2000 with February 1999. The MUICP is the average of the HICPs for the euro-zone Member States.

The annual rate of change for the euro-zone rose from 1.9% in January to 2.0% in February 2000. A year ago, in February 1999, the corresponding rate was 0.8%.

The rate of inflation in the EU, as measured by the European Index of Consumer Prices (EICP=EU-15), was 1.9% comparing February 2000 with February 1999. The EICP is the average of the HICPs of all EU Member States. A year ago, in February 1999, the corresponding rate was 1.0%.

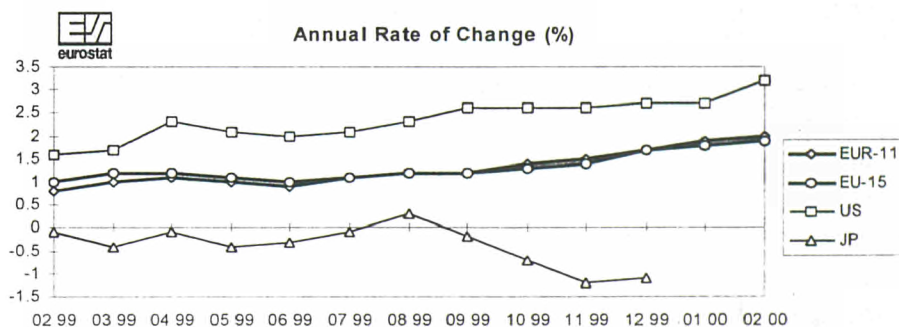
EU Member States with the lowest inflation rates in February 2000 were Sweden (1.4%), France and the Netherlands (both 1.5%). Highest inflation rates were reported for Ireland (4.6%), Spain (3.0%) and Denmark (2.8%).

The annual rate of inflation for the European Economic Area (EEA) as a whole was 1.9% in February 2000. A year ago, in February 1999, the corresponding rate was 1.0%. The February annual rate of change remained stable at 1.6% in Switzerland** and rose to 3.2% for the USA**. (No February data available for Japan** when going to press).

The inflation rates for the EU-15, EUR-11 and the USA** from February 1999 to February 2000 and for Japan** from February 1999 to December 1999 are shown in the graph below:

* The euro-zone comprises: Belgium, Germany, Spain, France, Ireland, Italy, Luxembourg, the Netherlands, Austria, Portugal and Finland.

** For the USA, Japan and Switzerland the national CPIs are given, which are not strictly comparable with the HICPs.



Statistics in focus

ECONOMY AND FINANCE

THEME 2 – 10/2000

PRICES AND PURCHASING POWER PARITIES

Contents

Price Indices	2
Rates of Change	4
COICOP/HICP Main categories	6
Methodological Notes	7



TABLE I HARMONIZED INDICES OF CONSUMER PRICES INDEX NUMBERS												
	EUR-11 (MUICP)	EU-15 (EICP)	B	DK	D	EL	E	F	IRL	I	L	NL
	Annual Average Index											1996 = 100
1996	100.0	100.0	100.0	100.0	100.0	100.0	100.0	100.0	100.0	100.0	100.0	100.0
1997	101.6	101.7	101.5	101.9	101.5	105.4	101.9	101.3	101.2	101.9	101.4	101.9
1998	102.7	103.0	102.4	103.3	102.1	110.2	103.7	102.0	103.4	103.9	102.4	103.7
1999	103.8	104.3	103.6	105.4	102.8	112.6#	106.0	102.5	106.0	105.7	103.4	105.8
1998	Monthly Index											
January	102.0	102.2	101.8	102.4	101.7	107.1	103.2	101.3	101.5	103.1	102.2	102.0
February	102.3	102.5	102.0	102.8	102.0	106.5	102.9	101.7	102.0	103.4	102.1	102.7
March	102.4	102.7	101.8	103.0	101.8	109.2	103.0	101.9	102.5	103.6	102.2	103.8
April	102.6	103.0	102.4	103.2	101.9	111.0	103.2	102.1	103.1	103.8	102.0	104.2
May	102.8	103.2	102.9	103.7	102.3	111.4	103.4	102.2	103.5	103.9	102.3	104.0
June	102.9	103.3	102.8	103.7	102.4	111.7	103.4	102.3	104.0	104.0	102.3	103.5
July	102.9	103.2	103.0	103.3	102.7	109.3	103.9	101.9	103.7	104.0	102.5	103.2
August	102.9	103.2	102.6	103.2	102.6	109.4	104.2	102.0	103.9	104.1	102.5	103.2
September	102.9	103.3	102.5	103.6	102.2	111.6	104.2	102.1	104.2	104.1	102.5	104.2
October	102.8	103.3	102.5	103.5	102.0	111.6	104.2	102.0	104.1	104.3	102.5	104.5
November	102.8	103.3	102.5	103.6	102.0	111.5	104.1	101.9	104.1	104.4	102.6	104.5
December	102.9	103.4	102.4	103.4	102.0	112.1	104.4	102.0	104.4	104.5	102.5	104.1
1999	Monthly Index											
January	102.8	103.2	102.8	103.6	101.9	110.6#	104.7	101.6	103.6	104.6	100.8	104.1
February	103.1	103.4	103.0	104.1	102.1	109.8#	104.8	102.0	104.3	104.8	102.7	104.8
March	103.4	103.8	103.1	104.7	102.3	112.5#	105.2	102.3	104.6	105.0	102.8	105.9
April	103.7	104.2	103.5	105.0	102.7	113.9	105.6	102.6	105.2	105.2	103.3	106.2
May	103.8	104.3	103.7	105.4	102.7	113.4#	105.6	102.6	105.9	105.5	103.6	106.2
June	103.8	104.3	103.5	105.7	102.8	113.4#	105.6	102.6	106.2	105.5	103.5	105.7
July	104.0	104.3	103.7	105.4	103.3	111.0#	106.1	102.3	105.7	105.8	102.2	105.1
August	104.1	104.4	103.5	105.7	103.3	110.9#	106.6	102.5	106.4	105.8	103.9	105.8
September	104.1	104.6	103.8	106.1	103.0	113.1#	106.8	102.7	106.9	106.1	104.1	106.3
October	104.2	104.6	103.9	106.2	102.9	113.5#	106.7	102.8	107.0	106.3	104.4	106.4
November	104.3	104.8	104.1	106.4	103.0	113.7#	106.9	102.9	107.2	106.5	104.5	106.6
December	104.7	105.1	104.5	106.6	103.4	114.7#	107.3	103.4	108.5	106.7	104.9	106.1
2000	Monthly Index											
January	104.8#	105.0#	104.7	106.5	103.8	113.2#	107.7	103.3	108.2	106.9	104.3	105.8
February	105.2\$	105.4\$	105.2	107.0	104.2	112.7	107.9	103.5\$	109.1	107.3	105.4	106.4\$
March												
April												
May												
June												
July												
August												
September												
October												
November												
December												
	* estimated \$ provisional # revised ! definition differs : not available											

TABLE II
NATIONAL CPIs
INDEX NUMBERS

A	P	FIN	S	UK	EEAICP	IS	N	CH	US	JP	
								1996 = 100			
100.0	100.0	100.0	100.0	100.0	100.0	100.0	100.0	100.0	100.0	100.0	1996
101.2	101.9	101.2	101.9	101.8	101.7	101.8	102.6	100.6	102.3	101.7	1997
102.0	104.2	102.6	102.9	103.4	103.1	103.2	104.6	100.5	103.9	102.4	1998
102.5	106.4	103.9	103.4	104.8	104.3	105.4	106.8	101.3	106.2	102.1	1999
											1998
101.8	102.7	101.9	102.5	102.1	102.2	103.0	103.6	100.6	103.0	102.0	January
102.1	102.5	101.9	102.4	102.4	102.5	102.8	103.8	100.7	103.2	101.9	February
102.2	102.8	102.1	102.7	102.7	102.7	103.1	104.4	100.6	103.4	102.3	March
102.3	103.6	102.6	103.1	103.3	103.0	103.3	104.5	100.7	103.6	102.5	April
102.1	104.3	102.8	103.4	103.8	103.3	103.6	104.4	100.5	103.8	102.8	May
101.9	104.5	103.0	103.2	103.7	103.3	103.8	104.6	100.5	103.9	102.4	June
101.9	104.7	102.5	102.9	103.1	103.2	103.3	104.7	100.4	104.0	101.8	July
101.9	104.6	102.7	102.3	103.5	103.2	102.7	104.2	100.7	104.1	101.7	August
101.7	104.4	103.1	102.9	104.0	103.3	102.7	105.0	100.6	104.3	102.5	September
101.9	104.7	103.0	103.2	103.9	103.3	103.1	105.0	100.6	104.5	103.2	October
102.0	105.3	102.7	103.0	104.0	103.3	103.4	105.2	100.4	104.5	103.1	November
102.2	105.7	102.6	102.9	104.3	103.4	103.1	105.3	100.4	104.4	102.7	December
											1999
102.1	105.3	102.4	102.5	103.7	103.2	103.4	105.7	100.6	104.8	102.2	January
102.3	105.3	102.8	102.6	103.9	103.5	103.3	105.9	100.9	104.9	101.8	February
102.4	105.7	103.0	103.2	104.4	103.9#	103.6	106.5	101.1	105.2	101.9	March
102.4	106.4	103.9	103.4	104.9	104.2	104.1	106.8	101.2	106.0	102.4	April
102.5	106.5	104.2	103.7	105.2	104.4#	104.6	106.7	101.0	106.0	102.4	May
102.1	106.7	104.2	103.6	105.1	104.3	105.2	106.8	101.1	106.0	102.1	June
102.2	106.7	103.9	103.1	104.4	104.3	105.4	106.5	101.1	106.2	101.7	July
102.4	106.5	104.0	103.1	104.8	104.5	105.9	106.0	101.6	106.5	102.0	August
102.3	106.4	104.5	104.0	105.2	104.6	106.6	106.9	101.8	107.1	102.3	September
102.7	106.6	104.6	104.2	105.1	104.7	107.4	107.5	101.8	107.3	102.5	October
103.0	107.3	104.6	103.8	105.3	104.8	107.3	107.9	101.8	107.3	101.9	November
103.9	107.5	104.9	104.1	105.5	105.2	107.6	108.1	102.1	107.3	101.6	December
											2000
103.5#	107.3	104.8	103.5	104.5	105.0#	108.2	108.5	102.2	107.6	:	January
104.2\$	107.0	105.6	104.0	104.9	105.4\$	107.8	109.0	102.5	108.2	:	February
											March
											April
											May
											June
											July
											August
											September
											October
											November
											December

* estimated \$ provisional # revised ! definition differs : not available

TABLE III
HARMONIZED INDICES OF CONSUMER PRICES
 RATES OF CHANGE (%)

	EUR-11 (MUICP)	EU-15 (EICP)	B	DK	D	EL	E	F	IRL	I	L	NL
	Annual Average Rate of Change 1996 = 100											
1997	1.6	1.7	1.5	1.9	1.5	5.4	1.9	1.3	1.2	1.9	1.4	1.9
1998	1.1	1.3	0.9	1.3	0.6	4.5	1.8	0.7	2.1	2.0	1.0	1.8
1999	1.1	1.2	1.1	2.1	0.6	2.1	2.2	0.6	2.5	1.7	1.0	2.0
2000 (Feb)	1.3\$	1.3\$	1.3	2.3	0.9	2.0	2.4	0.8\$	2.9	1.8	1.6	2.0\$
	Annual Rate of Change (t/t-12)											
1998												
January	1.1	1.3	0.5	1.7	0.7	4.3	1.9	0.6	1.2	1.9	1.5	1.6
February	1.1	1.3	0.8	1.7	0.6	4.1	1.7	0.7	1.1	2.1	1.1	2.1
March	1.1	1.3	1.0	1.6	0.5	4.3	1.7	0.8	1.5	2.1	1.3	2.2
April	1.4	1.6	1.3	1.6	0.9	5.1	1.9	1.0	2.0	2.2	1.1	2.5
May	1.3	1.6	1.3	1.4	0.9	5.0	2.0	1.0	2.4	2.0	1.3	2.1
June	1.4#	1.5	1.2	1.2	0.8	4.9	2.0	1.1	2.6	2.1	1.2	2.2
July	1.3	1.4	1.2	1.4	0.8	4.8	2.3	0.8	2.5	2.1	1.2	1.8
August	1.1	1.3	1.0	1.1	0.6	4.7	2.1	0.6	3.0	2.2	1.0	1.4
September	1.0	1.2	0.8	1.1	0.5	5.0	1.6	0.5	2.8	2.1	0.7	1.3
October	0.9	1.1	0.7	1.1	0.4	4.5	1.6	0.5	2.6	1.9	0.5	1.5
November	0.8	1.0	0.6	1.1	0.4	3.9	1.4	0.2	2.2	1.7	0.5	1.5
December	0.8	1.0	0.7	1.1	0.2	3.7	1.4	0.3	2.2	1.7	0.4	1.5
	Annual Rate of Change (t/t-12)											
1999												
January	0.8	0.9#	1.0	1.2	0.2	3.3#	1.5	0.3	2.1	1.5	-1.4	2.1
February	0.8#	1.0	1.0	1.3	0.1	3.1#	1.8	0.3	2.3	1.4	0.6	2.0
March	1.0#	1.2#	1.3	1.7	0.5	3.0#	2.1	0.4	2.0	1.4	0.6	2.0
April	1.1	1.2	1.1	1.7	0.8	2.6	2.3	0.5	2.0	1.3	1.3	1.9
May	1.0#	1.1	0.8	1.6	0.4	2.0#	2.1	0.4	2.3	1.5	1.3	2.1
June	0.9	1.0	0.7	1.9	0.4	1.5#	2.1	0.3	2.1	1.4	1.2	2.1
July	1.1#	1.1	0.7	2.0	0.6	1.6#	2.1	0.4	1.9	1.7	-0.3	1.8
August	1.2#	1.2	0.9	2.4	0.7	1.4#	2.3	0.5	2.4	1.6	1.4	2.5
September	1.2	1.2#	1.3	2.4	0.8	1.3#	2.5	0.6	2.6	1.9	1.6	2.0
October	1.4#	1.3	1.4	2.6	0.9	1.7#	2.4	0.8	2.8	1.9	1.9	1.8
November	1.5	1.4	1.6	2.7	1.0	2.0#	2.7	1.0	3.0	2.0	1.9	2.0
December	1.7	1.7	2.1	3.1	1.4	2.3#	2.8	1.4	3.9	2.1	2.3	1.9
	Annual Rate of Change (t/t-12)											
2000												
January	1.9#	1.8	1.8	2.8	1.9	2.4#	2.9	1.7	4.4	2.2	3.5	1.6
February	2.0\$	1.9\$	2.1	2.8	2.1	2.6	3.0	1.5\$	4.6	2.4	2.6	1.5\$
March												
April												
May												
June												
July												
August												
September												
October												
November												
December												
	* estimated \$ provisional # revised ! definition differs : not available											

TABLE IV
NATIONAL CPIs
RATES OF CHANGE (%)

A	P	FIN	S	UK	EEAICP	IS	N	CH	US	JP	
								1996 = 100			
1.2	1.9	1.2	1.8	1.8	1.7	1.8	2.6	0.5	2.3	1.7	1997
0.8	2.2	1.4	1.0	1.6	1.3	1.3	2.0	0.0	1.6	0.6	1998
0.5	2.2	1.3	0.6	1.3	1.2	2.1	2.1	0.8	2.2	-0.3	1999
0.7\$	2.0	1.6	0.7	1.2	1.3\$	2.8	2.2	1.0	2.4	:	2000 (Feb)
											1998
1.2	1.6	1.8	2.1	1.5	1.3	2.2	1.6	0.0	1.6	1.8	January
1.0	1.3	1.7	2.0	1.6	1.3	1.9	1.5	0.0	1.4	1.9	February
1.0	1.5	1.6	1.7	1.6	1.3	2.2	1.8	0.0	1.4	2.2	March
1.2	2.2	1.7	1.4	1.9	1.6	1.5	2.2	0.0	1.4	0.4	April
1.0	2.2	1.6	1.6	2.1	1.6	2.1	1.8	0.1	1.7	0.5	May
0.8	2.7	1.6	1.4	1.7	1.5	2.2	1.8	0.1	1.7	0.1	June
0.8	2.8	1.1	1.3	1.5	1.4	1.6	2.3	0.1	1.7	-0.1	July
0.7	2.2	1.1	0.6	1.3	1.3	0.7	2.0	0.1	1.6	-0.3	August
0.6	2.2	1.4	-0.1	1.5	1.2	0.3	2.3	0.1	1.5	-0.2	September
0.7	2.5	1.1	0.1	1.4	1.1	0.2	2.0	0.0	1.5	0.2	October
0.5	2.6	0.9	0.1	1.4	1.0	0.7	2.1	-0.1	1.5	0.8	November
0.5	2.8	0.8	0.0	1.6	1.0	0.5	2.1	-0.2	1.6	0.6	December
											1999
0.3	2.5	0.5	0.0	1.6	1.0	0.4	2.0	0.1	1.7	0.2	January
0.2	2.7	0.9	0.2	1.5	1.0	0.5	2.0	0.3	1.6	-0.1	February
0.2	2.8	0.9	0.5	1.7	1.2#	0.5	2.0	0.5	1.7	-0.4	March
0.1	2.7	1.3	0.3	1.5	1.2	0.8	2.2	0.6	2.3	-0.1	April
0.4	2.1	1.4	0.3	1.3	1.1	1.0	2.2	0.6	2.1	-0.4	May
0.2	2.1	1.2	0.4	1.4	1.0	1.3	2.1	0.6	2.0	-0.3	June
0.3	1.9	1.4	0.2	1.3	1.1	2.0	1.7	0.7	2.1	-0.1	July
0.5	1.8	1.3	0.8	1.3	1.2	3.1	1.7	0.9	2.3	0.3	August
0.6	1.9	1.4	1.1	1.2	1.2#	3.8	1.8	1.2	2.6	-0.2	September
0.8	1.8	1.6	1.0	1.2	1.3	4.2	2.4	1.2	2.6	-0.7	October
1.0	1.9	1.9	0.8	1.3	1.4#	3.8	2.6	1.3	2.6	-1.2	November
1.7	1.7	2.2	1.2	1.2	1.7	4.4	2.7	1.7	2.7	-1.1	December
											2000
1.4#	1.9	2.3	1.0	0.8	1.8	4.6	2.6	1.6	2.7	:	January
1.9\$	1.6	2.7	1.4	1.0	1.9\$	4.4	2.9	1.6	3.2	:	February
											March
											April
											May
											June
											July
											August
											September
											October
											November
											December

* estimated \$ provisional # revised ! definition differs : not available

TABLE V
MAIN CATEGORIES OF HARMONIZED INDICES OF CONSUMER PRICES
 ANNUAL RATES OF CHANGE (%)

COICOP /HICP Group	COICOP/HICP Divisions	EUR-11 (MUICP)	EU-15 (EICP)	B	DK	D	EL	E	F	IRL	I	L	NL	A	P	FIN	S	UK	EEAICP	IS	N
		Annual Rate of Change																			
																			February 2000 / February 1999		
00.	HICP (all-items index)	2.0\$	1.9\$	2.1	2.8	2.1	2.6	3.0	1.5\$	4.6	2.4	2.6	1.5\$	1.9\$	1.6	2.7	1.4	1.0	1.9\$	4.4	2.9
01.	FOOD AND NON-ALCOHOLIC BEVERAGES	0.1\$	-0.1\$	-1.3	1.4	-1.3	2.3	1.6	1.1\$	1.9	0.6	1.1	-1.6\$	0.7\$	0.7	0.4	0.1	-2.1	-0.1\$	5.2	2.0
02.	ALCOHOLIC BEVERAGES AND TOBACCO	2.5\$	2.9\$	1.9	1.9	1.8	2.7	3.4	3.3\$	13.0	1.9	2.2	2.3\$	1.9\$	1.1	2.8	1.5	4.7	3.0\$	1.7	6.2
03.	CLOTHING AND FOOTWEAR	0.5\$	-0.5\$	0.7	-8.2	0.1	1.0	2.1	-2.0\$	-4.5	2.2	1.0	-1.1\$	1.0\$	-1.6	0.5	0.9	-6.0	-0.5\$	-3.6	-1.2
04.	HOUSING, WATER, ELECTRICITY, GAS AND OTHER FUELS	3.7\$	3.6\$	6.4	7.0	3.8	6.9	4.4	1.3\$	7.7	4.8	6.4	4.7\$	2.3\$	3.1	3.9	0.4	2.7	3.6\$	4.4	6.2
05.	FURNISHINGS, HOUSEHOLD EQUIPMENT AND ROUTINE MAINTENANCE OF THE HOUSE	0.7\$	0.4\$	0.7	1.8	0.1	1.2	2.2	-0.2\$	3.8	1.7	2.9	1.2\$	0.9\$	1.7	0.9	0.5	-1.8	0.4\$	1.5	1.2
06.	HEALTH	1.7\$	1.8\$	1.7	1.5	0.7	0.9	3.0	1.2\$	6.3	2.1	11.2	3.2\$	2.0\$	2.4	2.1	3.7	2.4	1.9\$	1.7	3.9
07.	TRANSPORT	5.7\$	5.4\$	7.3	5.3	6.9	4.4	6.8	4.8\$	7.8	4.1	5.1	6.7\$	5.6\$	3.0	6.8	5.5	3.8	5.4\$	9.3	4.8
08.	COMMUNICATIONS	-3.0\$	-3.5\$	-0.7	-2.1	-3.6	-15.6	-6.9	-0.4\$	-3.0	-3.0	-8.1	-6.5\$	-4.4\$	-6.1	-0.7	-6.3	-3.6	-3.6\$	-2.6	-8.5
09.	RECREATION AND CULTURE	0.1\$	0.3\$	-0.5	2.1	0.5	0.8	1.1	-0.5\$	3.1	0.4	-0.4	-3.0\$	1.1\$	-0.4	0.9	1.4	0.8	0.3\$	2.5	2.3
10.	EDUCATION	2.5\$	3.7\$:	1.4	2.4	3.6	4.2	1.5\$	13.9	1.8	1.7	3.1\$	2.6\$	2.5	0.5	7.0	5.6	3.7\$	3.9	3.6
11.	HOTELS, CAFES AND RESTAURANTS	2.4\$	2.5\$	1.6	3.0	1.4	5.5	4.0	1.9\$	5.0	3.0	1.8	2.5\$	1.6\$	2.8	3.3	1.1	2.6	2.5\$	4.1	2.2
12.	MISCELLANEOUS GOODS AND SERVICES	2.2\$	2.2\$	1.9	2.5	2.1	1.9	2.7	1.1\$	4.4	3.6	0.4	2.7\$	1.0\$	3.8	3.7	2.9	1.7	2.2\$	6.9	0.9

* estimated \$ provisional # revised ! definition differs : not available

➤ METHODOLOGICAL NOTES

Harmonized Indices of Consumer Prices (HICPs) are produced and published monthly. They are central indicators for ESCBs/ECBs single monetary policy for the euro-zone as they form the basis of the Monetary Union Index of Consumer Prices (MUICP).

HICPs provide the best statistical basis for international comparisons of consumer price inflation in the European perspective.

HICPs cover all areas of private consumption expenditure. Considerable progress has been made since 1993 in harmonizing methodologies.

The relative distribution of consumers' expenditure on individual products varies from country to country. Hence, there is no *uniform basket* applying to all Member States. Owner occupiers' shelter costs, expressed as imputed rents or mortgage interest payments, are not regarded as part of the inflationary process and hence excluded.

The weights used in the compilation of HICPs may relate to a reference period up to seven years prior to the current year. However, adjustments must be made each year for especially large changes in the expenditure pattern. This minimises any disparity arising from different up-date frequencies.

In order to keep HICPs broadly in step with each other and up-to-date in terms of market developments, new products are to be included when they achieve a significant relative importance. HICPs must be shown to be based on appropriate sampling procedures, taking into account the national diversity of products and prices. The samples must be kept well up-to-date, in particular by banning the practice whereby *missing* prices are simply assumed to be equal to the last observed prices. In order to measure *pure* price changes, the prices included in HICPs need to be adjusted for changes in the quality. Certain inappropriate practices, such as *automatic linking*, have been ruled out in this context. Furthermore, HICPs have to be compiled using specified formulae.

The analysis of sources of inflationary pressure requires a sub-division of HICPs into component parts relating to different product groups. The about 100 sub-indices and weights published by Eurostat are based COICOP/HICP, i.e. a version of the international *Classification Of Individual Consumption by Purpose* adapted for HICPs.

The MUICP is calculated as a weighted average of the HICPs of the 11 countries of the euro-zone. The index is computed as an annual chain index allowing for country weights to change each year. The weight of a Member State is its share of household final monetary consumption expenditure in the EMU total. The country weights used in 2000 are national accounts data for 1998 updated to December 1999 prices. Weights in national currencies are converted into Euros using the irrevocably locked exchange rates.

The European Index of Consumer Prices (EICP) is calculated as an annual chain index for the 15 EU Member States up until 1998. Starting in 1999, the EICP is calculated as an annual chain index for the euro-zone, Denmark, Greece, Sweden, and United Kingdom. The European Economic Area Index of Consumer Prices (EEAICP) further includes Iceland and Norway. Country weights for the EICP and EEAICP are derived from the value of household final monetary consumption expenditure in national currencies converted into purchasing power standards (PPS). The euro-zone country weight reflects its share in the EU and EEA totals.

Technical notes on the HICP and MUICP were given in Eurostat news release 21/97 of 5.3.1997, memo 8/98 of 4.5.1998, and memo 2/00 of 18.2.2000 (which includes a full list of HICP Regulations). Further details can be obtained from the *Commission report to the Council on the harmonization of consumer price indices*, COM(1998)104, Catalogue number CB-CO-98-133 EN-C.

Further information:

➤ Databases

Theme 2 - Economy and Finance
Prices and purchasing power parities

To obtain information or to order publications, databases and special sets of data, please contact the **Data Shop** network:

BELGIQUE/BELGIË	DANMARK	DEUTSCHLAND	ESPAÑA	FRANCE	ITALIA - Roma
Eurostat Data Shop Bruxelles/Brussel Planistat Belgique 124 Rue du Commerce Handelsstraat 124 B-1000 BRUXELLES / BRUSSEL Tel. (32-2) 234 67 50 Fax (32-2) 234 67 51 E-Mail: datashop@planistat.be	DANMARKS STATISTIK Bibliotek og Information Eurostat Data Shop Sejrgade 11 DK-2100 KØBENHAVN Ø Tel. (45-39) 17 30 30 Fax (45-39) 17 30 03 E-Mail: bib@dst.dk	STATISTISCHES BUNDESAMT Eurostat Data Shop Berlin Otto-Braun-Straße 70-72 D-10178 BERLIN Tel. (49-30) 23 24 64 27/28 Fax (49-30) 23 24 64 30 E-Mail: datashop@statistik-bund.de	INE Eurostat Data Shop Paseo de la Castellana, 183 Oficina 009 Entrada por Estébanez Calderón E-28046 MADRID Tel. (34-91) 583 91 67 Fax (34-91) 579 71 20 E-Mail: datashop.eurostat@ine.es	INSEE Info Service Eurostat Data Shop 195, rue de Bercy Tour Gamma A F-75582 PARIS CEDEX 12 Tel. (33-1) 53 17 88 44 Fax (33-1) 53 17 88 22 E-Mail: datashop@insee.fr	ISTAT Centro di Informazione Statistica Sede di Roma, Eurostat Data Shop Via Cesare Balbo, 11a I-00184 ROMA Tel. (39-06) 46 73 31 02/06 Fax (39-06) 46 73 31 01/07 E-Mail: dipdiff@istat.it
ITALIA - Milano	LUXEMBOURG	NEDERLAND	NORGE	PORTUGAL	SCHWEIZ/SUISSE/SVIZZERA
ISTAT Ufficio Regionale per la Lombardia Eurostat Data Shop Via Fieno 3 I-20123 MILANO Tel. (39-02) 8061 32460 Fax (39-02) 8061 32304 E-mail: mileuro@tin.it	Eurostat Data Shop Luxembourg BP 453 L-2014 LUXEMBOURG 4, rue A. Weicker L-2721 LUXEMBOURG Tel. (352) 43 35 22 51 Fax (352) 43 35 22 21 E-Mail: dslux@eurostat.datashop.lu	STATISTICS NETHERLANDS Eurostat Data Shop-Voorburg po box 4000 2270 JM VOORBURG Nederland Tel. (31-70) 337 49 00 Fax (31-70) 337 59 84 E-Mail: datashop@cbs.nl	Statistics Norway Library and Information Centre Eurostat Data Shop Kongens gate 6 P. b. 8131, dep. N-0033 OSLO Tel. (47-22) 86 46 43 Fax (47-22) 86 45 04 E-Mail: datashop@ssb.no	Eurostat Data Shop Lisboa INE/Serviço de Difusão Av. António José de Almeida, 2 P-1000-043 LISBOA Tel. (351-21) 842 61 00 Fax (351-21) 842 63 64 E-Mail: data.shop@ine.pt	Statistisches Amt des Kantons Zürich, Eurostat Data Shop Bleichenweg 5 CH-8090 Zürich Tel. (41-1) 225 12 12 Fax (41-1) 225 12 99 E-Mail: datashop@zh.ch Internetadresse: http://www.zh.ch/statistik
SUOMI/FINLAND	SVERIGE	UNITED KINGDOM	UNITED KINGDOM	UNITED STATES OF AMERICA	
Eurostat Data Shop Helsinki Tilasto kirjasto Postiosoite: PL 2B Käyntiosoite: Työpajakatu 13 B, 2 krs FIN-00022 Tilastokeskus Tel. (358-9) 17 34 22 21 Fax (358-9) 17 34 22 79 S-posti datashop.tilastokeskus@tilastokeskus.fi Internetadresse: http://www.tilastokeskus.fi/tyk/xd/datashop.html	STATISTICS SWEDEN Information service Eurostat Data Shop Karlavägen 100 - Box 24 300 S-104 51 STOCKHOLM Tel. (46-8) 50 69 48 01 Fax (46-8) 50 69 48 99 E-Mail: infoservice@scb.se URL: http://www.scb.se/info/datashop/ eudatashop.asp	Eurostat Data Shop Enquiries & advice and publications Office for National Statistics Customers & Electronic Services Unit 1 Drummond Gate - B1/05 UK-LONDON SW1V 2QQ Tel. (44-171) 533 56 76 Fax (44-1633) 812 762 E-Mail: eurostat.datashop@ons.gov.uk	Eurostat Data Shop Electronic Data Extractions, Enquiries & advice - R.CADE Unit 1L Mountjoy Research Centre University of Durham UK - DURHAM DH1 3SW Tel: (44-191) 374 7350 Fax: (44-191) 384 4971 E-Mail: r.cade@dur.ac.uk URL: http://www.rcade.dur.ac.uk	HAVER ANALYTICS Eurostat Data Shop 60 East 42nd Street Suite 3310 USA-NEW YORK, NY 10165 Tel. (1-212) 986 93 00 Fax (1-212) 986 58 57 E-Mail: eurodata@haver.com	

Media Support Eurostat (for professional journalists only).
Bech Building Office A3/48 • L-2920 Luxembourg • Tel. (352) 4301 33408 • Fax (352) 4301 32649 • e-mail: media.support@cec.eu.int

For information on methodology

C. OLSSON, Eurostat/B3, L-2920 Luxembourg, Tel. (352) 4301 34208, Fax (352) 4301 33989, E-mail: carsten.olsson@cec.eu.int
ORIGINAL: English

Please visit our web site at www.europa.eu.int/comm/eurostat/ for further information!

A list of worldwide sales outlets is available at the **Office for Official Publications of the European Communities**.

2 rue Mercier - L-2985 Luxembourg
Tel. (352) 2929 42118 Fax (352) 2929 42709
Internet Address <http://eur-op.eu.int/ffr/general/s-ad.htm>
e-mail: info.info@cec.eu.int

BELGIQUE/BELGIË - DANMARK - DEUTSCHLAND - GREECE/ELLADA - ESPAÑA - FRANCE - IRELAND - ITALIA - LUXEMBOURG - NEDERLAND - ÖSTERREICH
PORTUGAL - SUOMI/FINLAND - SVERIGE - UNITED KINGDOM - ISLAND - NORGE - SCHWEIZ/SUISSE/SVIZZERA - BALGARIJA - CESHÁ REPUBLIKA - CYPRUS
EESTI - HRVATSKA - MAGYARORSZÁG - MALTA - POLSKA - ROMÂNIA - RUSSIA - SLOVAKIA - SLOVENIA - TÜRKIYE - AUSTRALIA - CANADA - EGYPT - INDIA
ISRAËL - JAPAN - MALAYSIA - PHILIPPINES - SOUTH KOREA - THAILAND - UNITED STATES OF AMERICA

Order form

I would like to subscribe to Statistics in focus (from 1.1.2000 to 31.12.2000):
(for the Data Shop and sales office addresses see above)

Formula 1: All 9 themes (approximately 140 issues)

- Paper: EUR 360
 PDF: EUR 264
 Paper + PDF: EUR 432
Language required: DE EN FR

Formula 2: One or more of the following seven themes:

- Theme 1 'General statistics'
 Paper: EUR 42 PDF: EUR 30 Combined: EUR 54
 Theme 2 'Economy and finance'
 Theme 3 'Population and social conditions'
 Theme 4 'Industry, trade and services'
 Theme 5 'Agriculture and fisheries'
 Theme 6 'External trade'
 Theme 8 'Environment and energy'
 Paper: EUR 84 PDF: EUR 60 Combined: EUR 114
Language required: DE EN FR

Please send me a free copy of 'Eurostat Mini-Guide' (catalogue containing a selection of Eurostat products and services)
Language required: DE EN FR

I would like a free subscription to 'Statistical References', the information letter on Eurostat products and services
Language required: DE EN FR

Mr Mrs Ms

(Please use block capitals)

Surname: _____ Forename: _____

Company: _____ Department: _____

Function: _____

Address: _____

Post code: _____ Town: _____

Country: _____

Tel.: _____ Fax: _____

E-mail: _____

Payment on receipt of invoice, preferably by:

- Bank transfer
 Visa Eurocard

Card No: _____ Expires on: ____/____/____

Please confirm your intra-Community VAT number:

If no number is entered, VAT will be automatically applied. Subsequent reimbursement will not be possible.